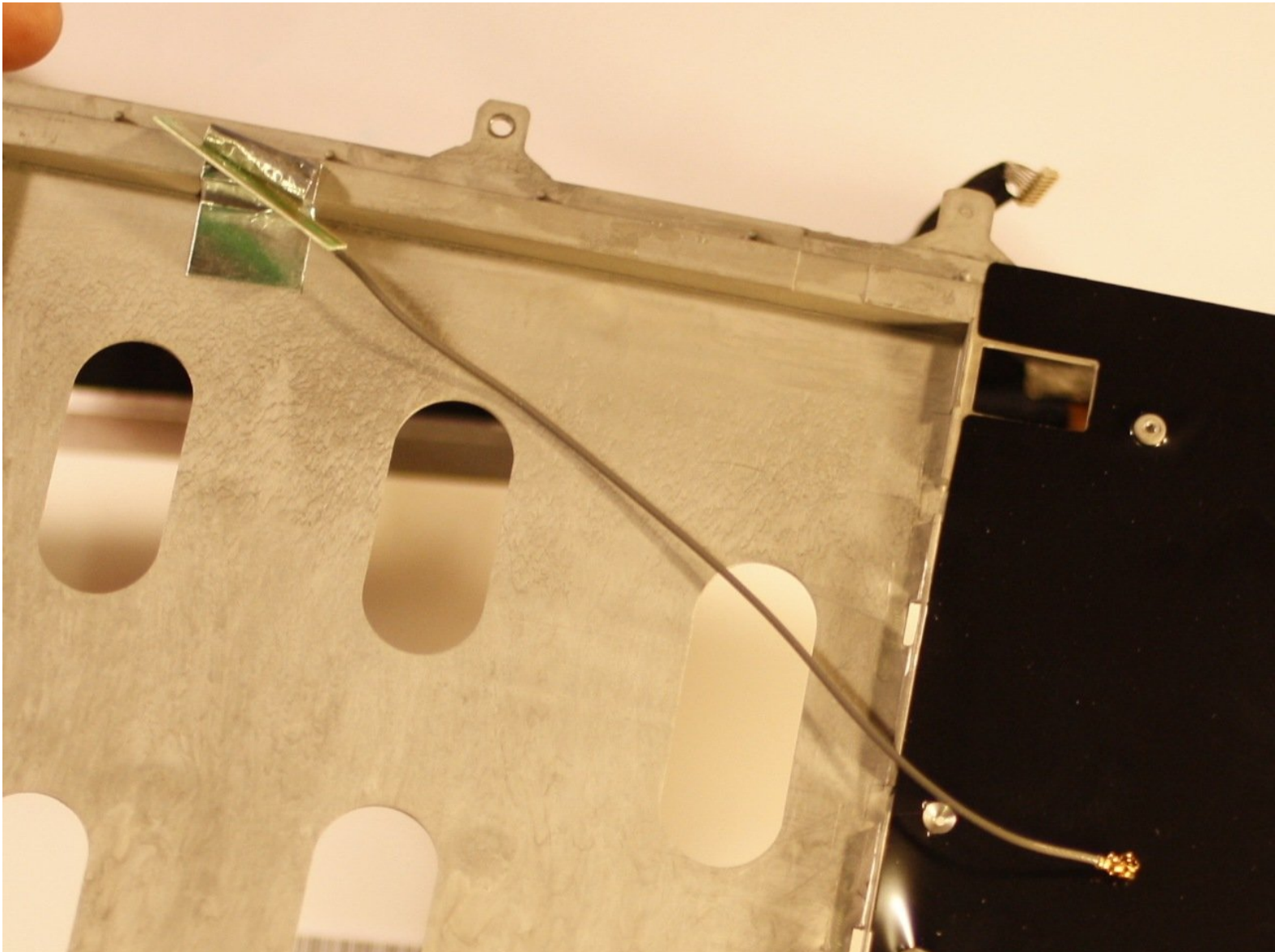




Viewsonic gTablet UPC300-2.2 Antenna Replacement

Replace stock antenna to solve wireless connection issues.

Written By: Cristian





TOOLS:

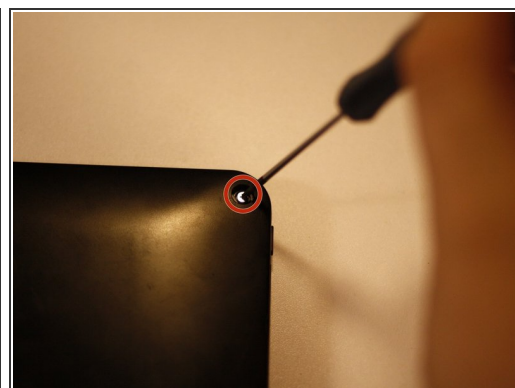
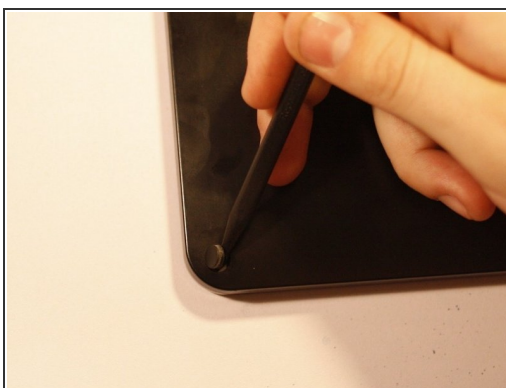
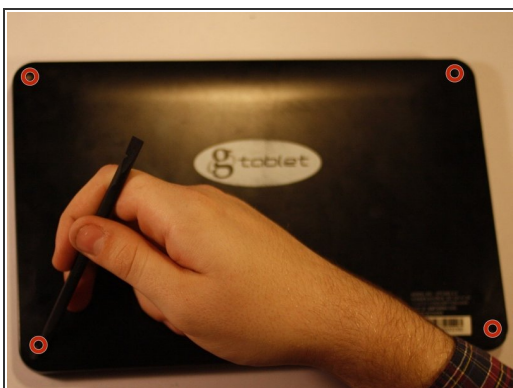
- [Spudger](#) (1)
- [iFixit Opening Tools](#) (1)
- [Phillips #00 Screwdriver](#) (1)



PARTS:

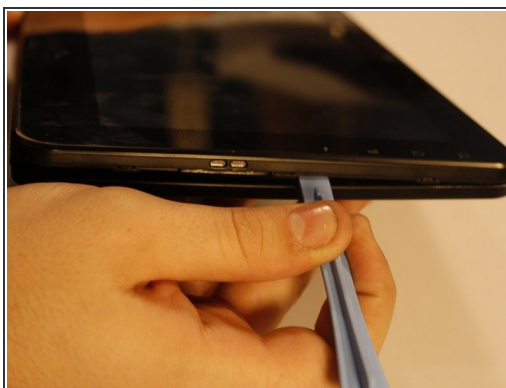
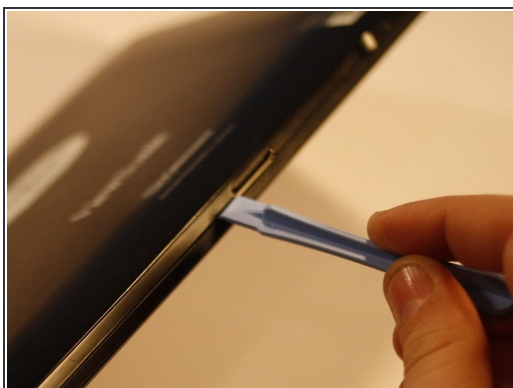
- [gTablet battery](#) (1)

Step 1 — Back Cover Screws



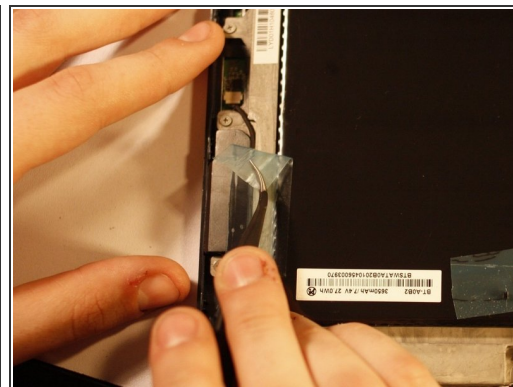
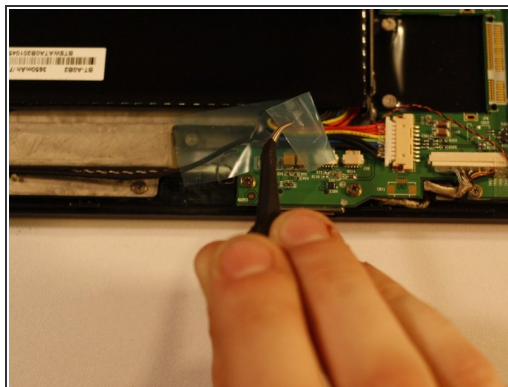
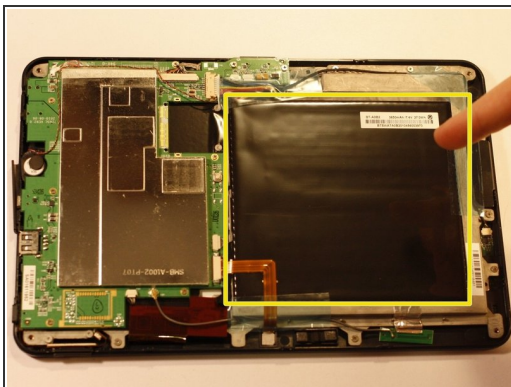
- Using your spudger or metal tweezers, work the rubber screw covers out of their sockets, found on each of the four corners of the back cover.
- ⓘ Have patience! These are held in with glue and can take time and a few attempts to remove.
- Using a PH00 screwdriver, remove the 5.8mm screws found beneath each rubber cover (4 total).

Step 2 — Pry Off Back Cover



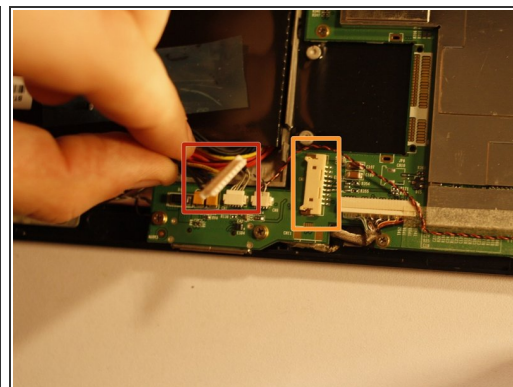
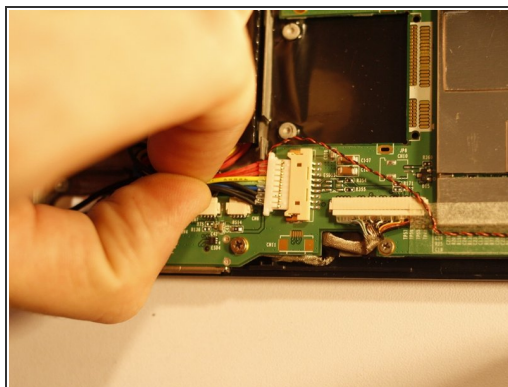
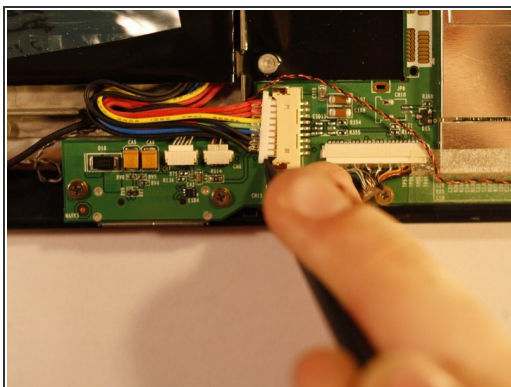
- Using the flat end of your prying tool, work the back cover away from the rest of the gTabelt.
- Starting near the charging port, work in one direction around the perimeter of the device.
- ⚠ Do not insert prying tool deeper than is necessary to separate back cover. You may damage other components!
- Lift off back cover to reveal the interior of the device.

Step 3 — Identify Battery & Prepare for Removal



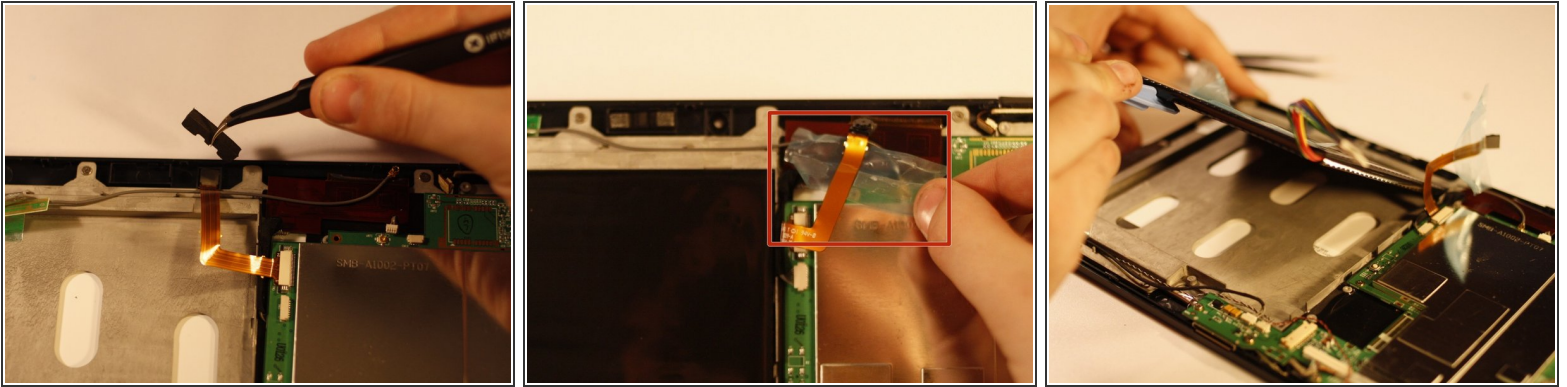
- The battery is the large black square that dominates much of the device interior.
- There is tape holding several wires in place. This must be removed before the battery can be removed. Peel it gently; you will want to use it later.

Step 4 — Disconnect Battery Power Cable



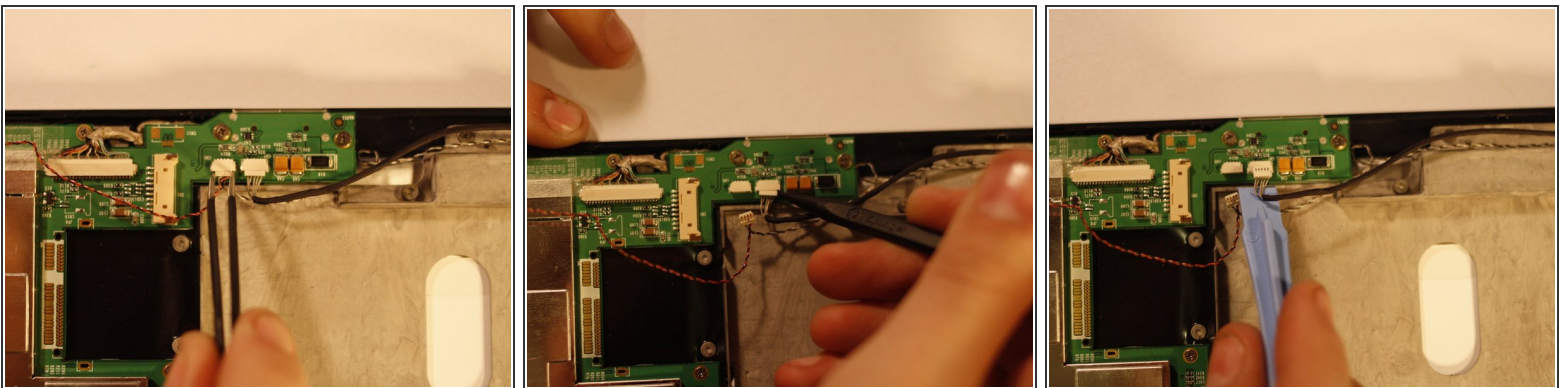
- Using a PLASTIC tool of your choice, push both ends of the power cable connector, one at a time, away from its housing. This will slowly wiggle the connector out of place.
- ① The white connector(red markup) comes off while the off white connector(orange markup) stays on the motherboard.

Step 5 — Move Front-Facing Camera & Remove Battery



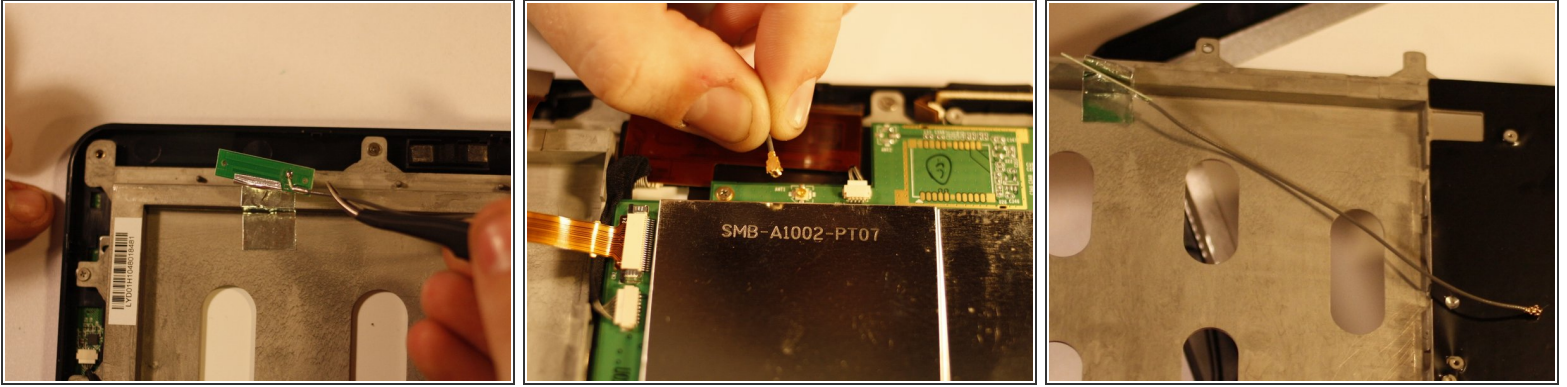
- Using tweezers, remove the protective foam backing arch from the front-facing camera.
- Pull the camera out of its housing and move it aside.
- ⓘ Be sure to move any wires out of the way before attempting to move the battery, as these are still connected and shouldn't be stressed!
- Gently lift the battery up and away from the rest of the device and set it aside.

Step 6 — Disconnect the Speaker Assembly



- Using tweezers or the spudger-wiggle technique, disconnect the two wires (shown here to the right of the battery power cable housing) from their housings.
- ⚠ It is very easy to damage the wires going to and from these connectors! Going slow and using as little force as possible will help to prevent this.

Step 7 — Disconnect the Antenna



- Find the antenna receiver affixed to the LCD Screen chassis with foil tape. Gently peel back the foil tape and remove the antenna.
- Now follow the wire attached to the antenna back to where it connects to the motherboard. Gently rotate and lift the connection until it lifts away.
- You may now install a replacement antenna by reversing these steps.

To reassemble your device, follow these instructions in reverse order.