



# KitchenAid Classic Mixer K45SSWH Worm Gear Replacement

Replace your worm gear to get your mixer spinning again.

Written By: Chris Grant



# INTRODUCTION

If your mixer won't spin or is noisy, follow our guide on how to replace the worm gear.



## TOOLS:

- [Phillips #2 Screwdriver](#) (1)
- [Hammer](#) (1)
- [Flathead Screwdriver](#) (1)
- [Pin Punch](#) (1)
- [1 mm](#)
- [Putty knife](#) (1)
- [Spudger](#) (1)



## PARTS:

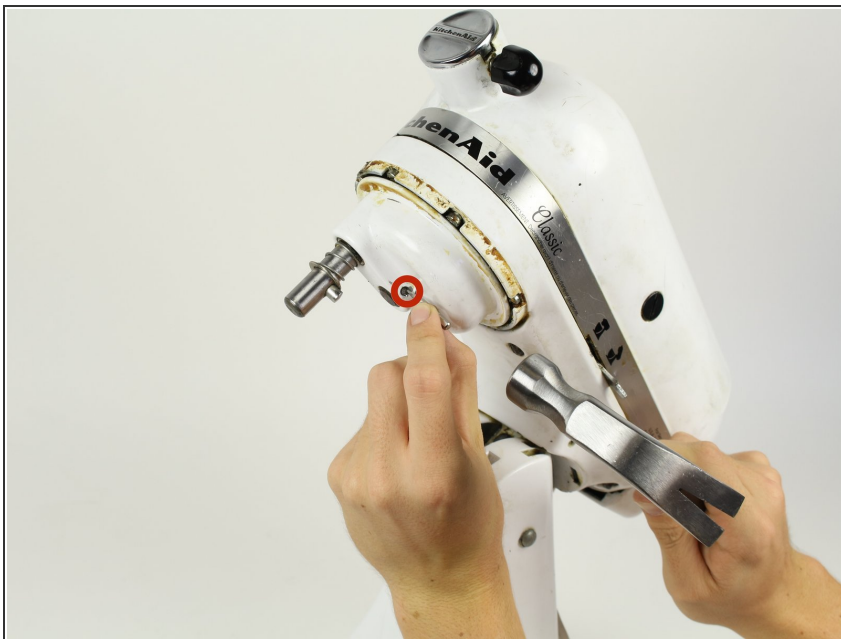
- [KitchenAid part # 481201230741](#) (1)

## Step 1 — Motor Housing Cover



- Using a spudger, gently pry off the aluminum drip ring.

## Step 2



- Using a 4 mm pin punch and hammer, hammer the pin until it is dislodged from the planetary gear cover.

### Step 3



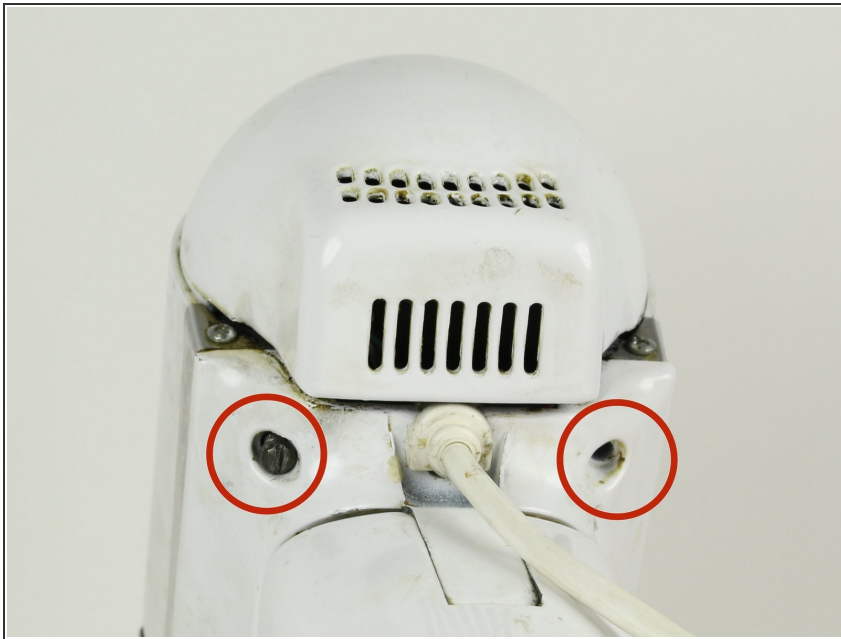
- Using a spudger, pry the planetary gear cover from the mixer shaft.

### Step 4



- Using a flathead screwdriver, remove the five 28 mm front motor housing screws.
- Using the same flathead screwdriver, remove the two 28 mm locking screws.
- ⚠ One of the locking screws contains a safety locking mechanism. Do not interchange these screws with the front motor housing screws.

## Step 5



- Turn your device around. Using the same flathead screwdriver, remove the two 28 mm rear locking screws.
- ⚠ One of the rear motor housing screws contains a safety locking mechanism. Do not interchange these screws with the front motor housing screws.

## Step 6

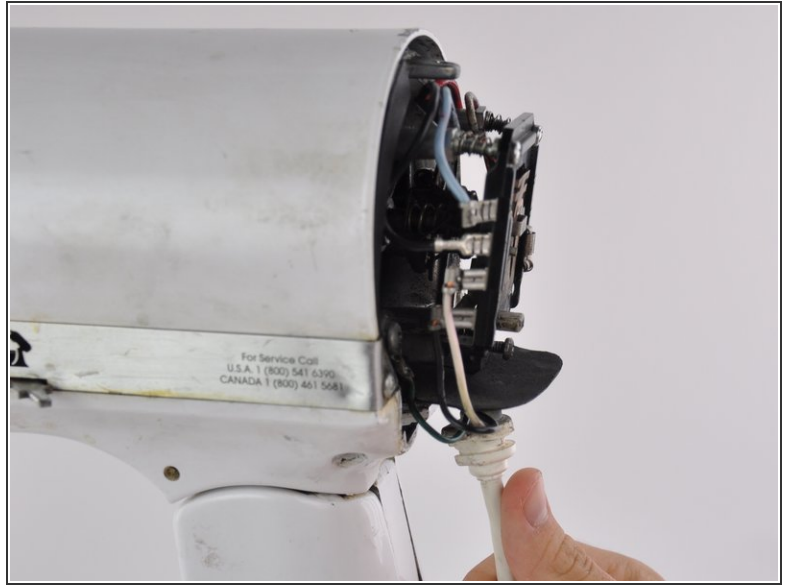
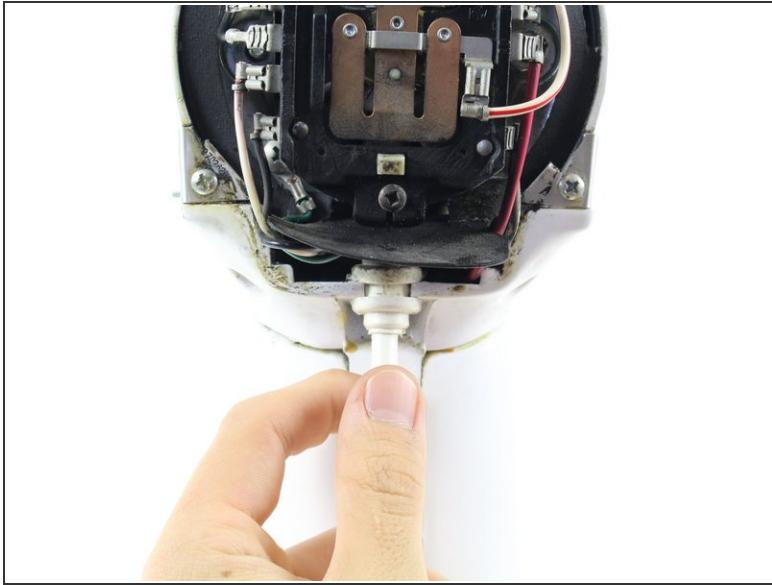


- Using a Phillips #2 screwdriver, remove the 10 mm screw from top of back cover.

**i** The rear cover is now completely free from the mixer.



## Step 7



- Carefully pull the power cord from the notch in back of the mixer.
- ⓘ The motor housing cover is now completely free from the base of the mixer.

## Step 8



- Lift the motor housing cover from the mixer base.
- ⚠ Be sure to place the cover upside-down to prevent grease from leaking out.

## Step 9 — Worm Gear



- Using a butter knife or putty knife, remove the grease from the gears.
- Place the grease in motor housing cover.

## Step 10



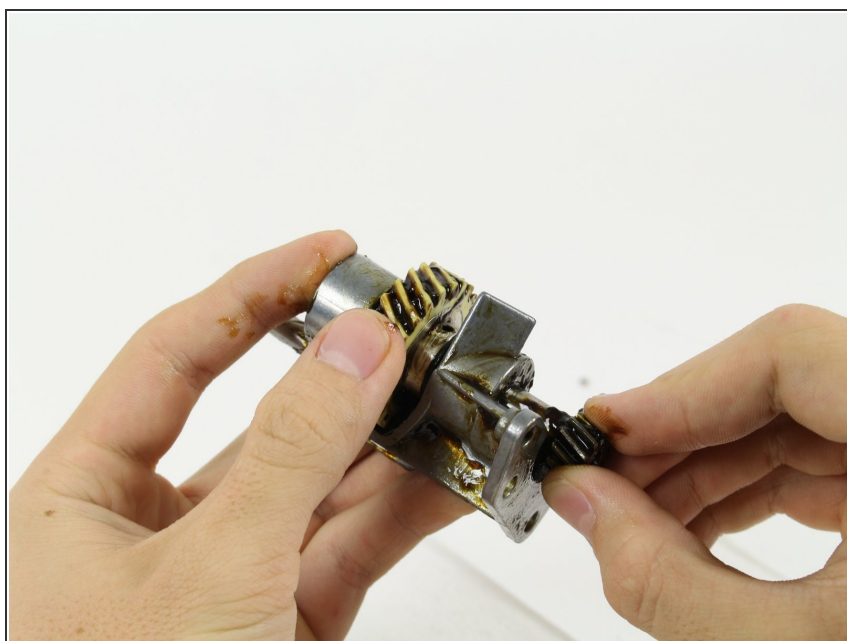
- Using a Phillips #2 screwdriver, remove the three 20 mm screws from the worm gear tower.
- ⓘ The worm gear tower assembly is now free from the mixer base.

## Step 11



- Using a pin punch and a hammer, remove the roll pin.

## Step 12



- Slide the tower gear out to access the worm gear.



## Step 13



- Remove the worm gear from the tower.

To reassemble your device, follow these instructions in reverse order.