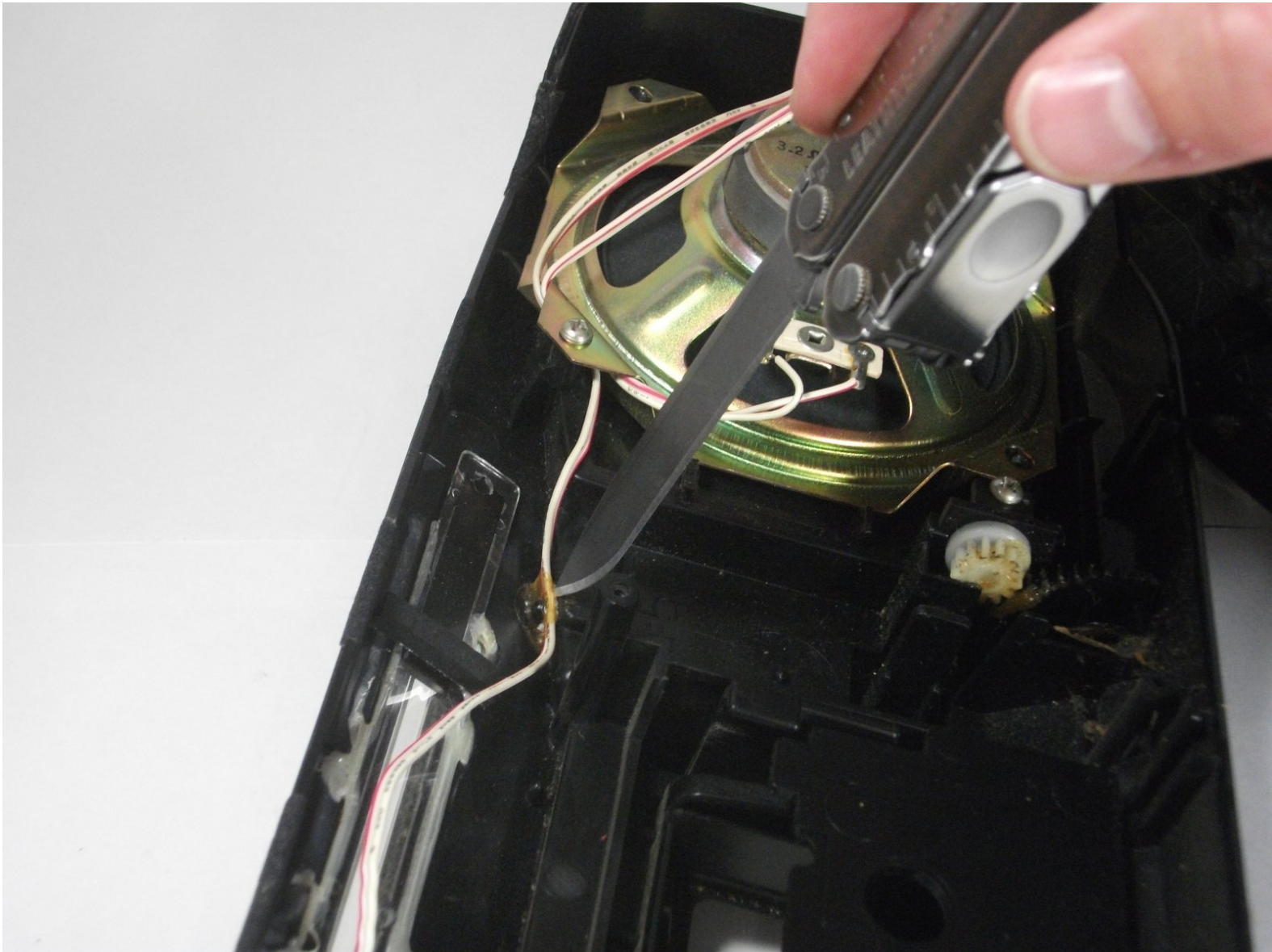




# Sony CFS-204 Radio Cassette-Corder Speaker Replacement

If the speaker is blown or damaged, replacing it will make your audio quality like-new!

Written By: Brittany Patterson



---

# INTRODUCTION

This guide will demonstrate how to open the radio and remove the speakers.



## TOOLS:

- [Phillips #2 Screwdriver](#) (1)
  - [Precision Utility Knife](#) (1)
-

## Step 1 — Batteries



- Press down on the two tabs at the top of the door.
- Rotate the door away from the radio, towards you.
- Lift the door out of the three smaller tabs on the bottom.

⚠ Ensure the radio is turned off to avoid the possibility of electric shock.

i The battery compartment door is not shown.

## Step 2 — Batteries

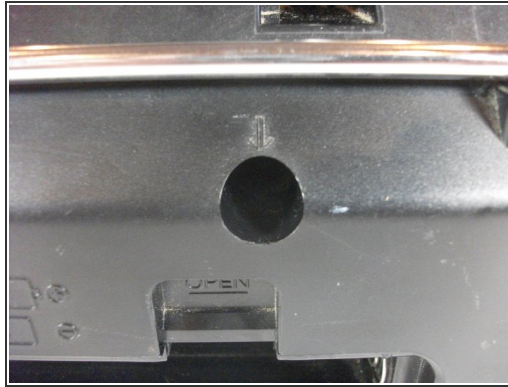


- Push the batteries against the spring and pull out using your finger to remove them.

➡ To insert the new batteries, push the negative end of the 1st battery against a spring and follow the diagram pictured to insert the batteries in the correct orientation.



## Step 3 — Screws



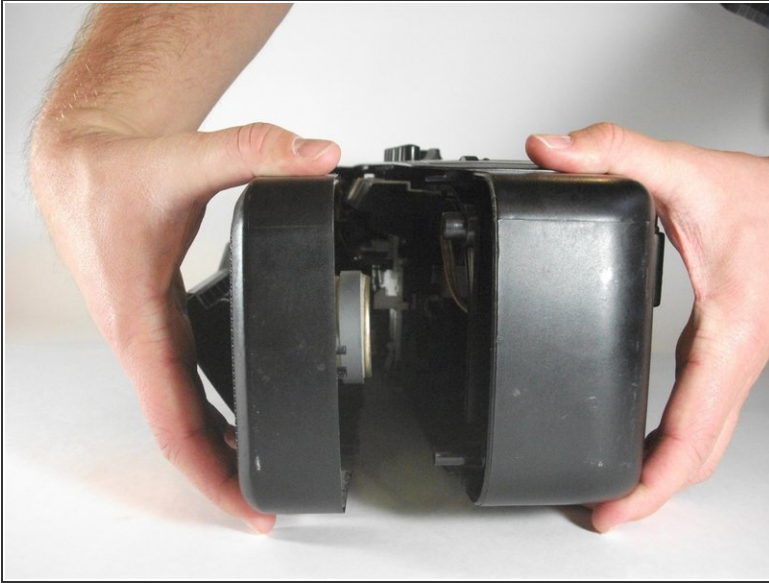
- Remove the 6 screws (30 mm in length) with the Phillips #2 Screwdriver from the large holes marked by arrows on the radio.

## Step 4 — Opening



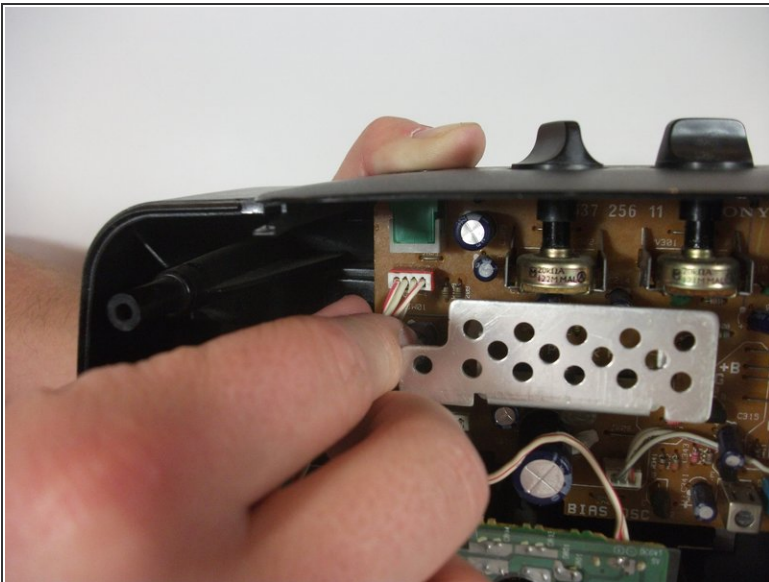
- Press the EJECT button to open the cassette deck.
- ⓘ Pressing this button is required to allow the front face to separate from the case.

## Step 5



- Grasp the radio from the front and back halves and gently pull apart to separate them.

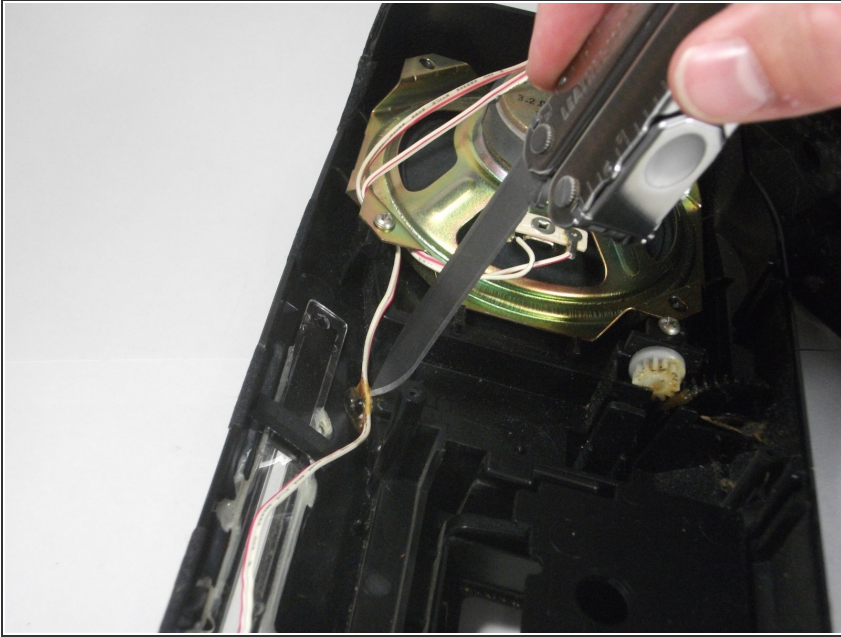
## Step 6



- Pull the white plug out from the red outlet in the Orange circuit board in the back face of the casing.
- i* Take care not to break the red outlet off the circuit board.
- i* The front and back portions of the casing are now separated from each other.



## Step 7 — Glue



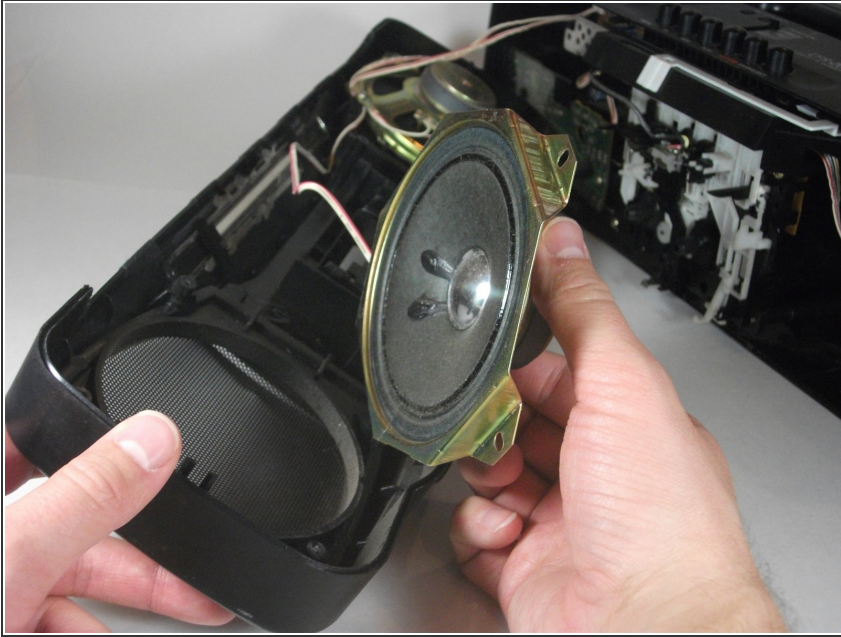
- Carefully slice the glue holding the speaker wire at the top right corner of the front face with a sharp tool or a knife to separate the wire from the case.
- ☑ The wire can be tucked into its original location without re-gluing it.

## Step 8 — Speaker



- Remove the 2 screws (10 mm in length) located on the corners of the speaker with the Phillips #2 screwdriver.
- ⓘ There are 4 screw positions; however, our radio only had screws in two of the positions on each speaker.
- Repeat the process for the second speaker if you need to replace both speakers.

## Step 9



- Lift the speakers out of the front face of the radio to complete the removal.

To reassemble your device, follow these instructions in reverse order.