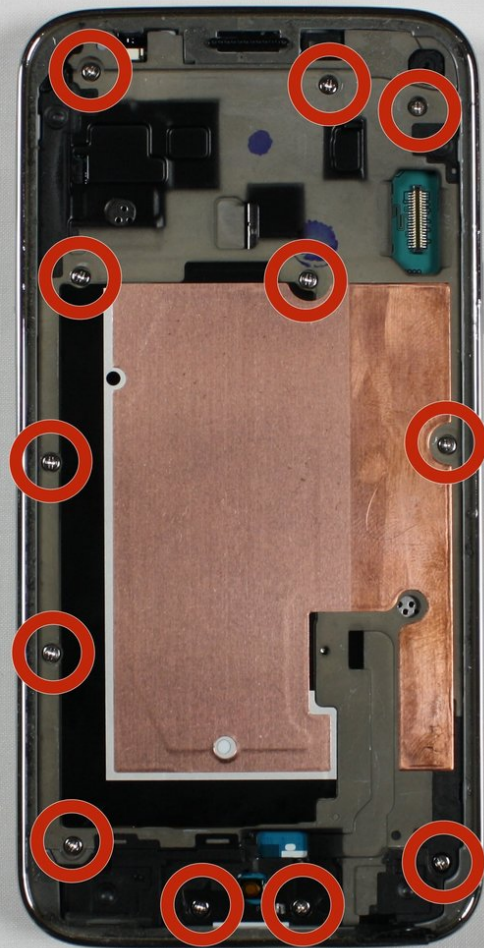




Samsung Galaxy S5 Mini Interior Midframe Assembly Replacement

Prerequisite only

Written By: Jon Kuzmich



INTRODUCTION

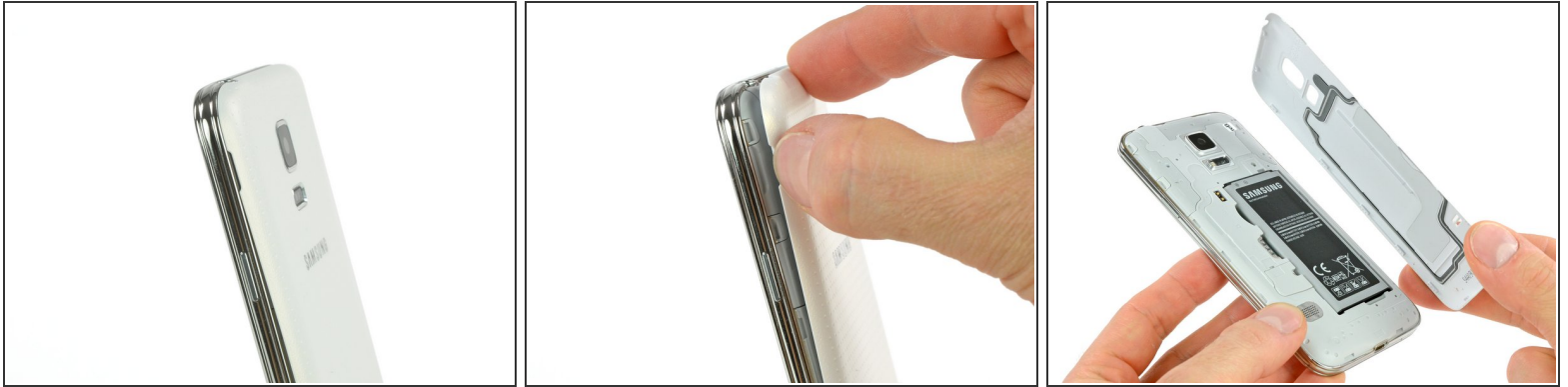
Prerequisite only




TOOLS:

- [iFixit Opening Tool](#) (1)
 - [Spudger](#) (1)
 - [iOpener](#) (1)
 - [Phillips #00 Screwdriver](#) (1)
 - [iFixit Opening Picks \(Set of 6\)](#) (1)
 - [Hair Dryer](#) (1)
-


Step 1 — Rear Panel



- Insert a fingernail or a plastic opening tool into the slot located above the power button.
 - Gently pull the panel off the back of the phone.
-  The plastic snaps will make a popping sound as they separate.

Step 2 — Battery



- Insert fingernail or plastic opening tool into the slot at the bottom of the battery.
 - Gently pry the battery away from the phone.
-  When replacing the battery, ensure the contacts are aligned and press lightly. The battery will appear to fit in multiple directions, so do not force it in.

Step 3 — Display Assembly



- Flip the phone and lay it on a flat surface so that the back is facing towards you.
- Use a spudger or plastic opening tool to pry up the home button cable connector and disconnect it.
- For reassembly, insert the home button cable connector through the open slot in the display assembly.
- Use an [iOpener](#) to loosen the adhesive beneath the display.

Step 4



- Flip the phone over so it is lying on its back.
- Insert a plastic opening tool or a plastic opening pick in the space between the screen and the frame and slide along the right side of the phone to loosen the adhesive.
- Gently lift the display assembly away from the frame until there is a small gap and leave the first opening pick in the bottom right corner next to your home button.
- Insert a second opening pick and slide it up to the top left corner of the phone by loosening the adhesive beneath the display.

⚠ Do not insert the opening pick more than 1/8 inch. There are some components that can be harmed.

Step 5



- Reheat the display of your phone with the iOpener. Especially the top and left side of the front.
- Insert a third opening pick and slide it carefully to the top left corner of the phone. Be aware of the front camera and the loudspeaker!

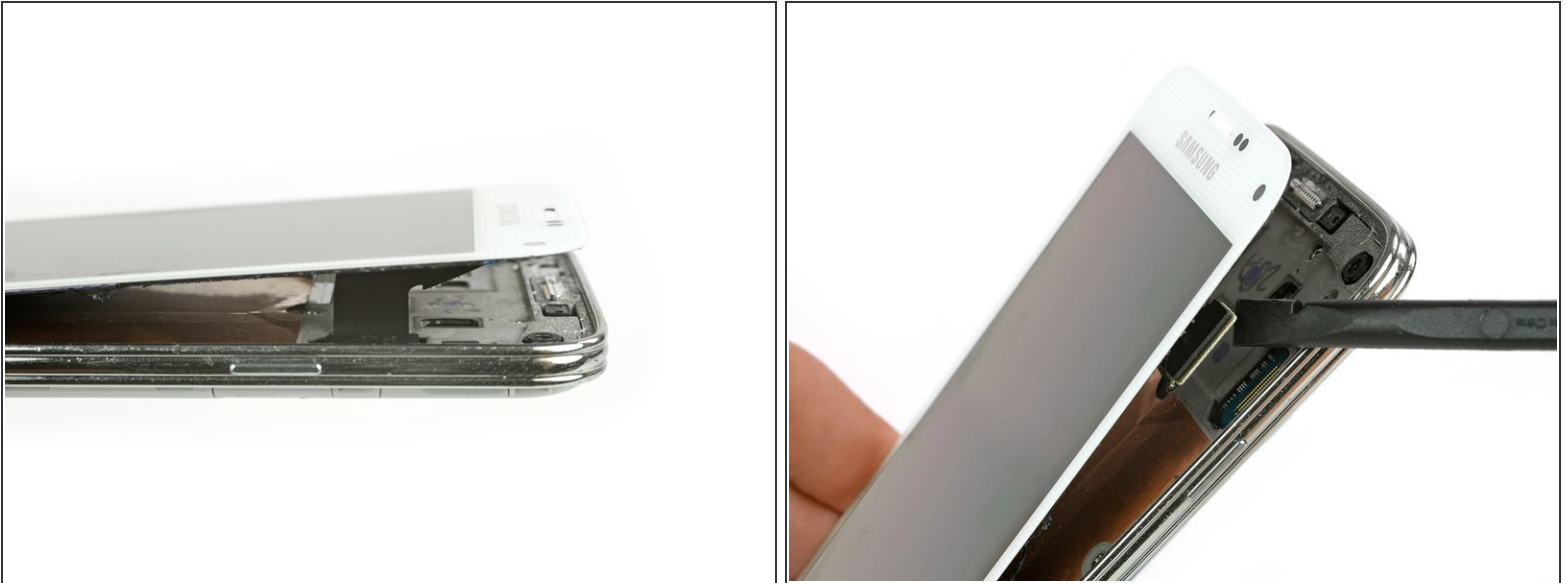
Step 6



- Insert a fourth opening pick and slide it to the lower left corner next to your home button.
- Flip the opening pick in the top right corner to lift the display. If it is still sticky, move the four opening picks around the frame as you did before to find remains of adhesive.

⚠ Do not remove the display assembly from the frame. It is still connected by a cable.

Step 7



⚠ Keep the top portion of the display assembly next to the frame.

- Unplug the display flex connector with a spudger.

Step 8



- Use a [suction handle](#) to lift the display off of your phone. The home button cable connector should go with the display through a small gap in the mid frame. If it doesn't, use a tweezer to help a little.
- Pull the display assembly away from the phone to remove it.

Step 9 — Interior Midframe Assembly



- Remove the 12 4 mm Phillips screws #00 from the midframe.

Step 10



- Flip the phone over and lay it on a flat surface so that the back is facing towards you.
- Unscrew the 4 mm Phillips #00 screw next to the battery slot.

Step 11



- Circle the midframe with a blow dryer or use the iOpener to loosen the adhesive on the midframe.
- ⓘ Circling the midframe for 10 to 30 seconds with a blowdryer should loosen the adhesive enough.

Step 12



⚠ Spread pressure out evenly to avoid damage or bending of the midframe.

- Apply pressure to the battery slot on back of the phone to separate the midframes.

To reassemble your device, follow these instructions in reverse order.