



# Sony Xperia TL Battery Replacement

This guide will teach you how to access and remove the battery.

Written By: Adam Giniger



## INTRODUCTION

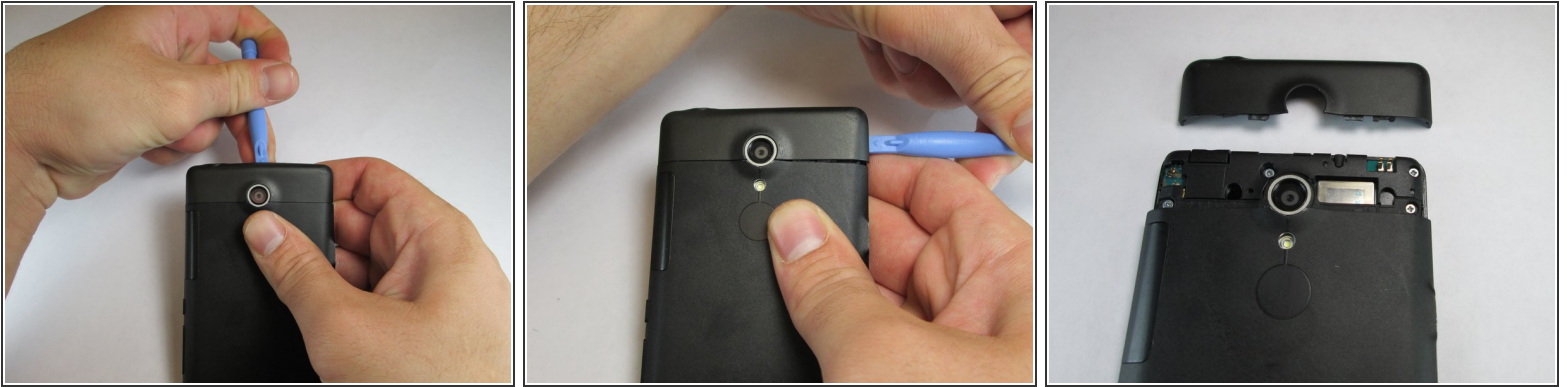
Removing this part is hard for the first time because the manufacturer used adhesive to keep it in place.



### TOOLS:

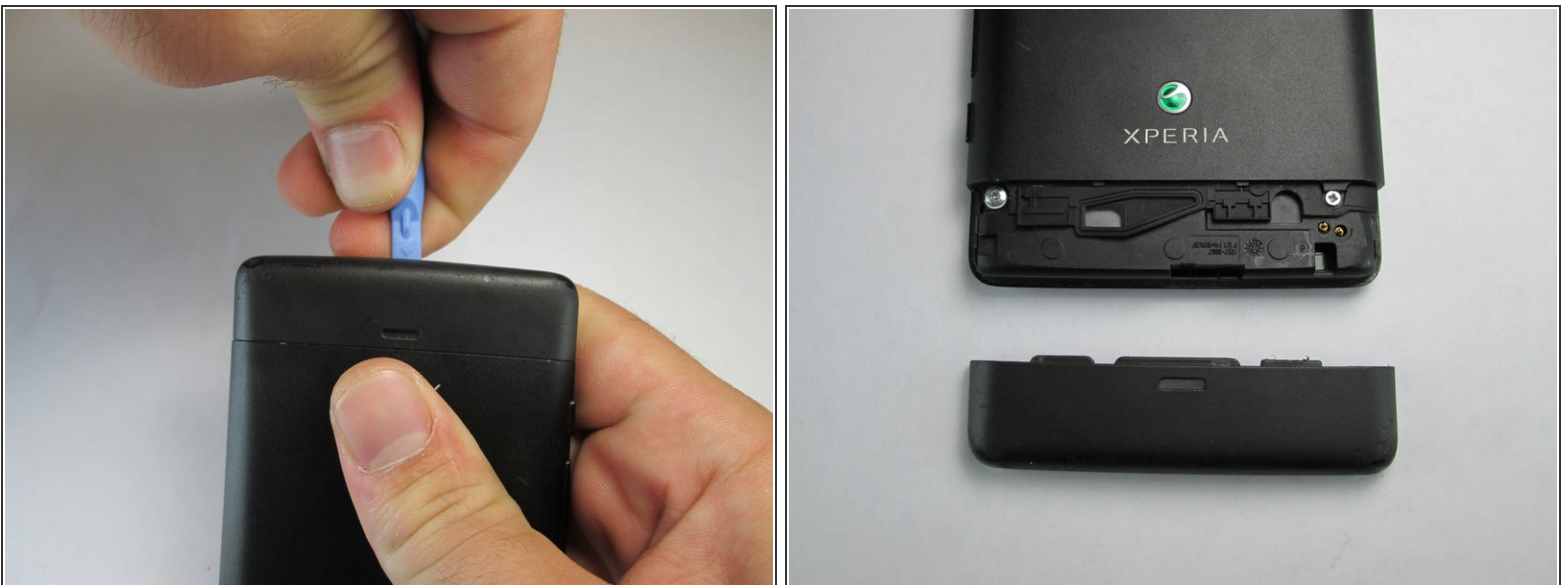
- [Phillips #00 Screwdriver](#) (1)
  - [iFixit Opening Tools](#) (1)
-

## Step 1 — Remove Top Plastic Section



- Use the plastic opening tool to pry the top plastic section off.

## Step 2 — Remove Bottom Plastic Section



- Use the plastic opening tool to pry the bottom plastic section off.

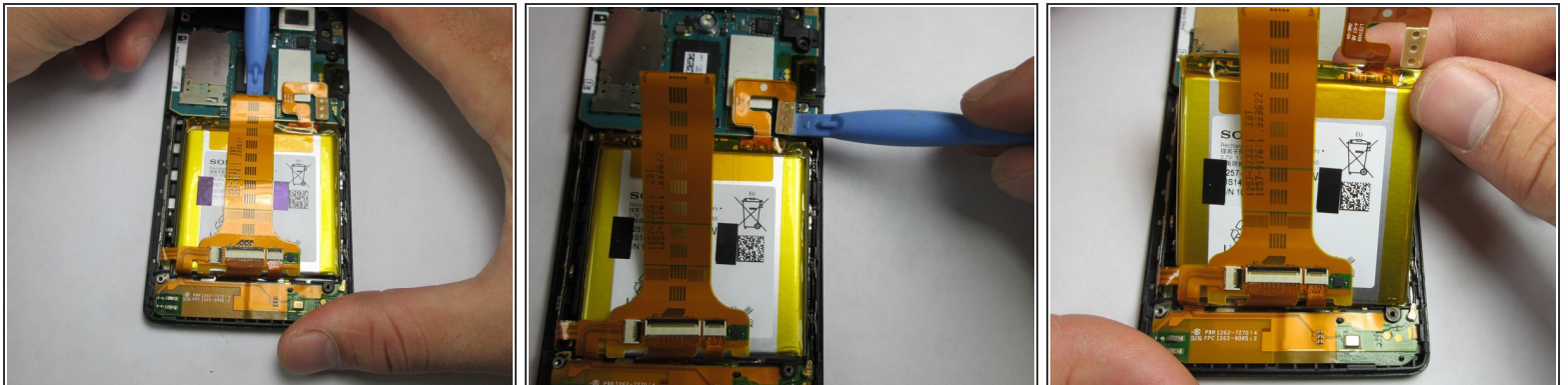


### Step 3 — Unscrewing the Back Off



- Remove the four 5mm screws.
- Use the plastic opening tool to pry off the back.

### Step 4 — Battery



- Use the plastic opening tool to detach the ribbon running across the battery.
- Use the plastic opening tool to detach the ribbon connecting the battery to the motherboard.

To reassemble your device, follow these instructions in reverse order.