



HTC Evo 4G Front Panel Replacement

Front panel replacement.

Written By: Walter Galan



INTRODUCTION

Remove the glass front panel to access your Evo's internals.



TOOLS:

- [Heat Gun](#) (1)
- [Phillips #00 Screwdriver](#) (1)
- [iFixit Opening Tools](#) (1)
- [Spudger](#) (1)
- [T5 Torx Screwdriver](#) (1)
- [Tweezers](#) (1)



PARTS:

- [HTC Evo 4G \(Sprint\) Front Panel](#) (1)

Step 1 — Rear Panel



- Gently insert an iPod opening tool between the rear panel and the inner rear frame near the headphone jack.
- Use your iPod opening tool to pry up the rear case around the perimeter of the Evo.

Step 2



- Lift the rear panel off of the inner rear frame.

Step 3 — Battery



- Using the tip of your finger, lift the battery from the end closest to the camera.
- Remove the battery from the rear inner frame.

Step 4 — MicroSD card



- Use the flat end of a spudger to pry up the red MicroSD retainer attached to the inner frame.
- ⚠ The retainer will move about 1 mm and stop. Do not attempt to completely remove the MicroSD card retainer.

Step 5



- Use a pair of tweezers to carefully pull the MicroSD card out of its slot in the inner rear frame.

Step 6 — Rear Inner Frame



- Remove six T5 Torx screws securing the rear inner frame to the inner case.

Step 7



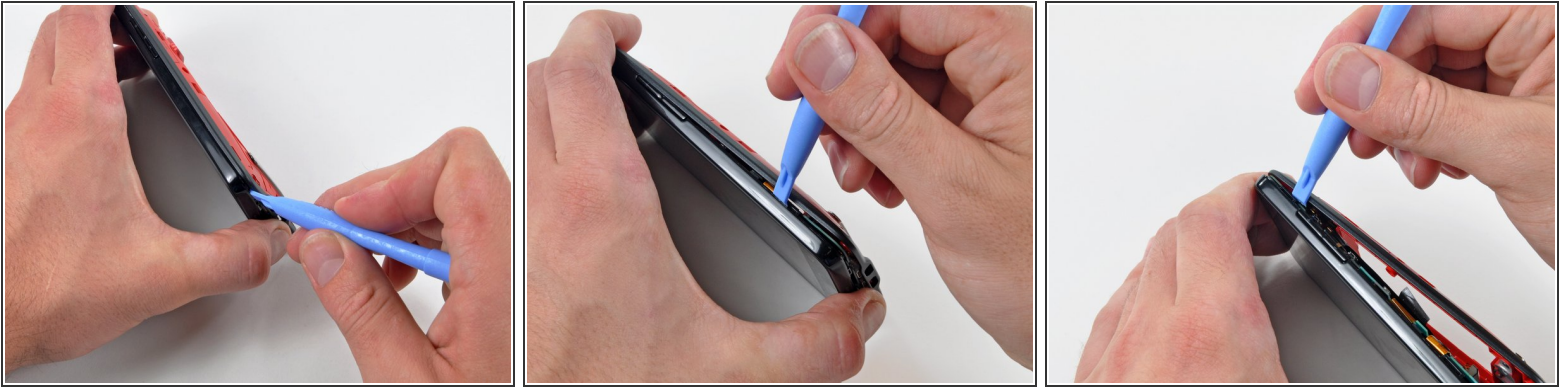
- Gently insert an iPod opening tool between the rear inner frame and its plastic surround near the Micro HDMI port.
- Carefully pry the top edge of the rear inner frame away from the front surround of the Evo.

Step 8



- Insert the iPod opening tool between the rear inner frame and its plastic surround and pry up at several points along the left edge of the Evo.

Step 9



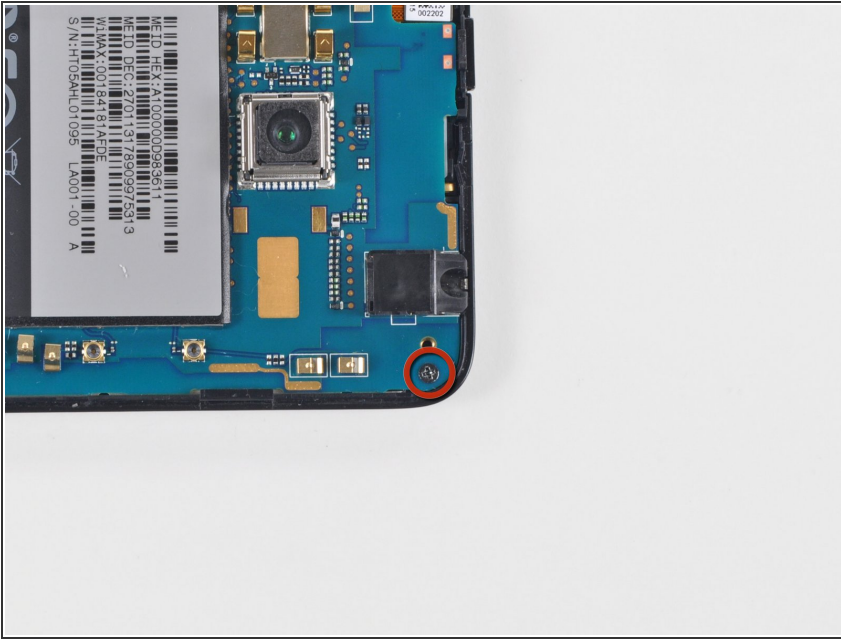
- Continue the prying procedure, now focusing on detaching the plastic surround from the bottom of the Evo.
- Pry up the rear inner frame along the right edge using the method described in previous steps.
- Eventually work around the entire perimeter of the rear inner frame until it is lifted slightly from the inner case.

Step 10



- Remove the rear inner frame from the rest of the Evo.

Step 11 — Motherboard



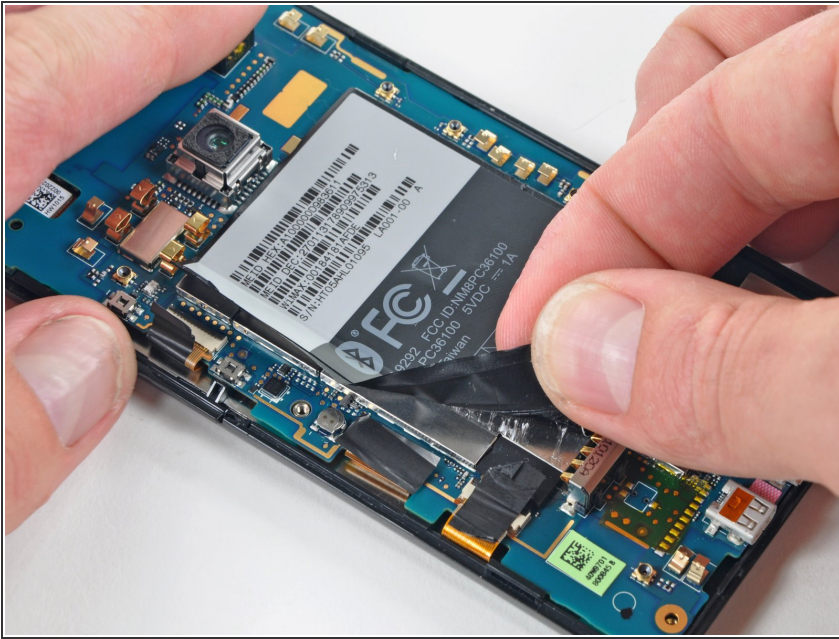
- Remove the single Phillips screw securing the motherboard to the inner case near the headphone jack.

Step 12



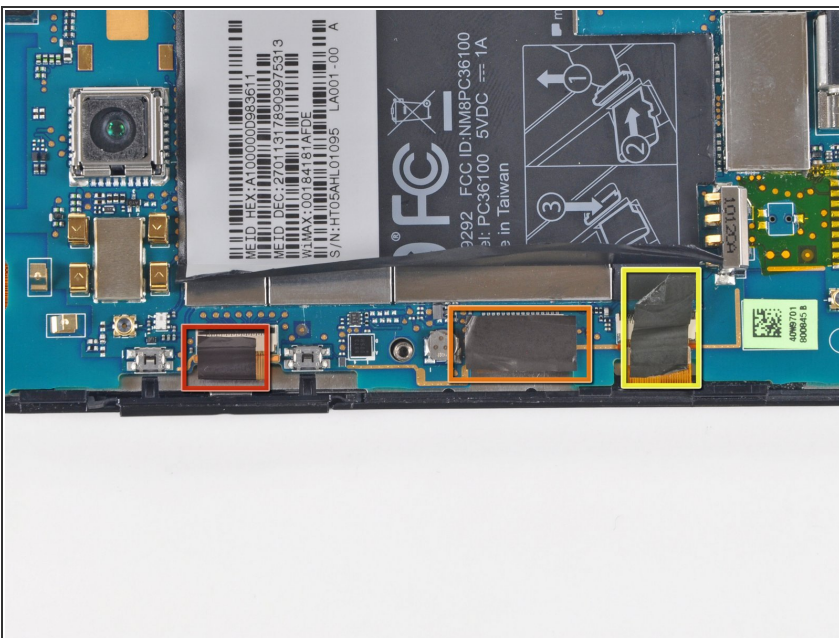
- Use the flat end of a spudger to pry the motherboard off the posts securing it to the metal display tray.
- ⚠ Do not try to completely remove the motherboard just yet. It is still attached by three ribbon cables.

Step 13



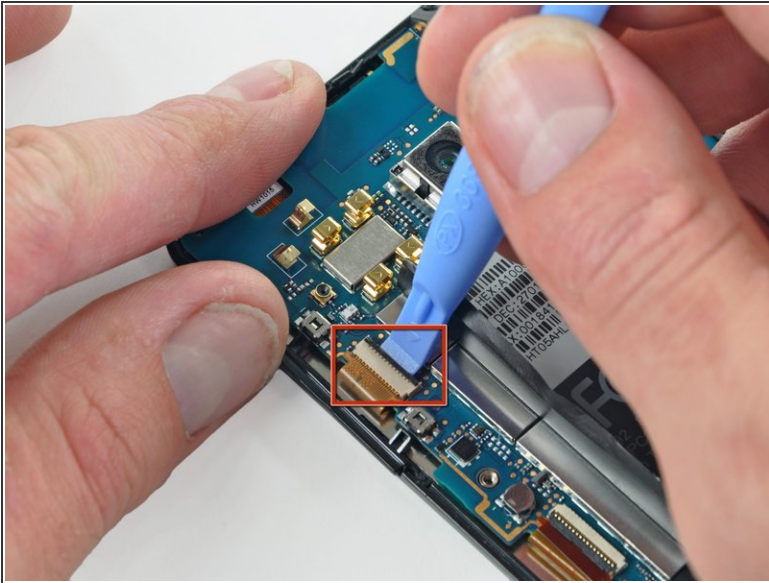
- Carefully peel the device information sticker off the left edge of the motherboard and EMI shield to reveal three connectors covered with tape.
- ⓘ It is not necessary to peel the entire device information sticker off the EMI shield.

Step 14



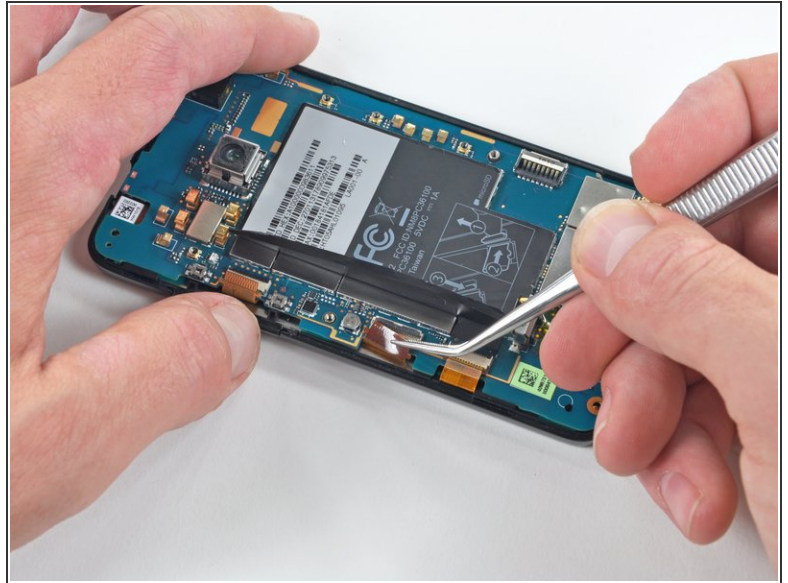
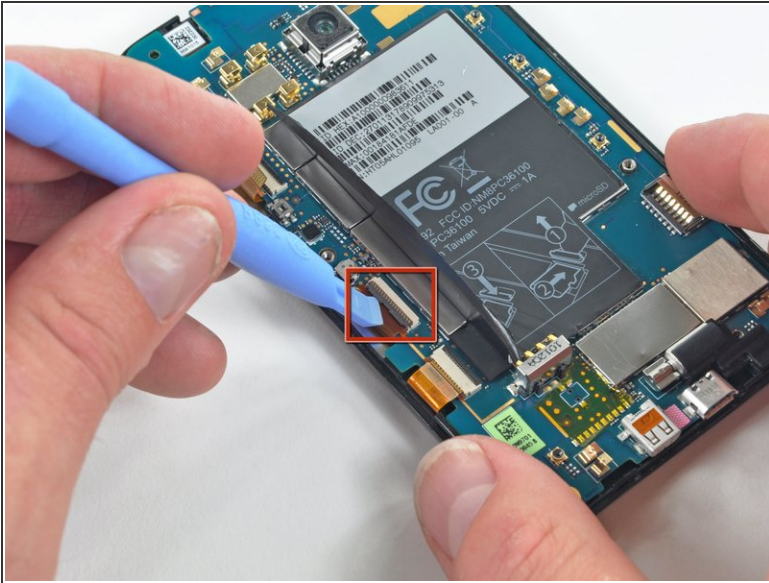
- ⓘ Fold the device information sticker up against the top of the motherboard to keep it out of the way while you work.
- Remove the pieces of tape covering the following ribbon cables:
 - Front-facing camera
 - Front panel ribbon cable
 - Display ribbon cable

Step 15



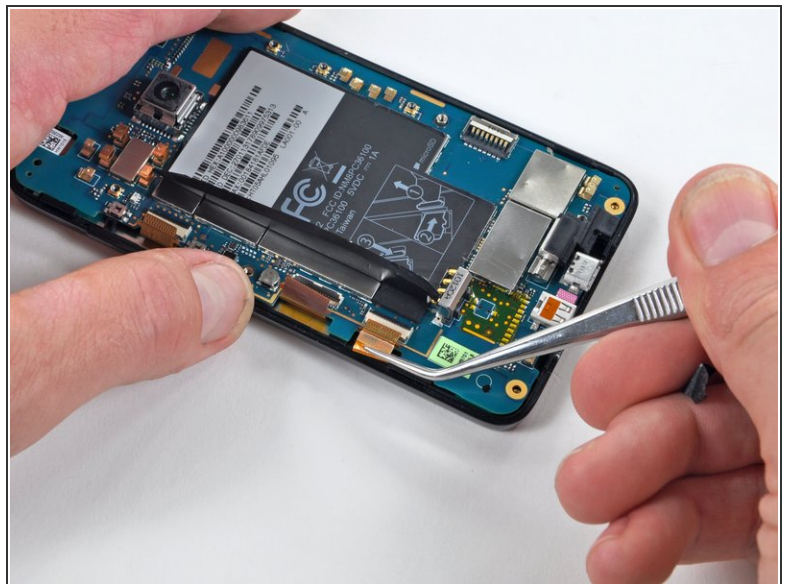
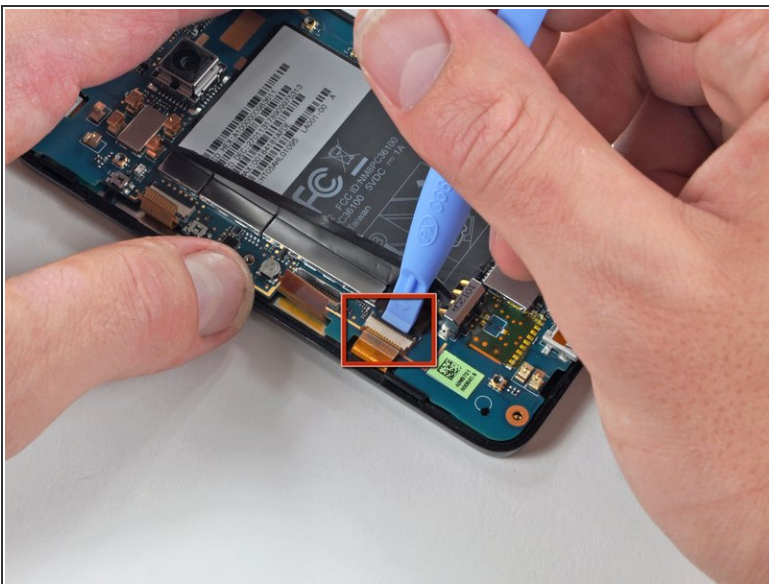
- Using the tip of an iPod opening tool, flip up the front-facing camera ribbon cable retaining flap.
- Be very careful and gentle with these flaps. They are very easy to break or dislodge and equally difficult to reinstall.
- Use a pair of tweezers to pull the front-facing camera ribbon cable straight out of its socket.

Step 16



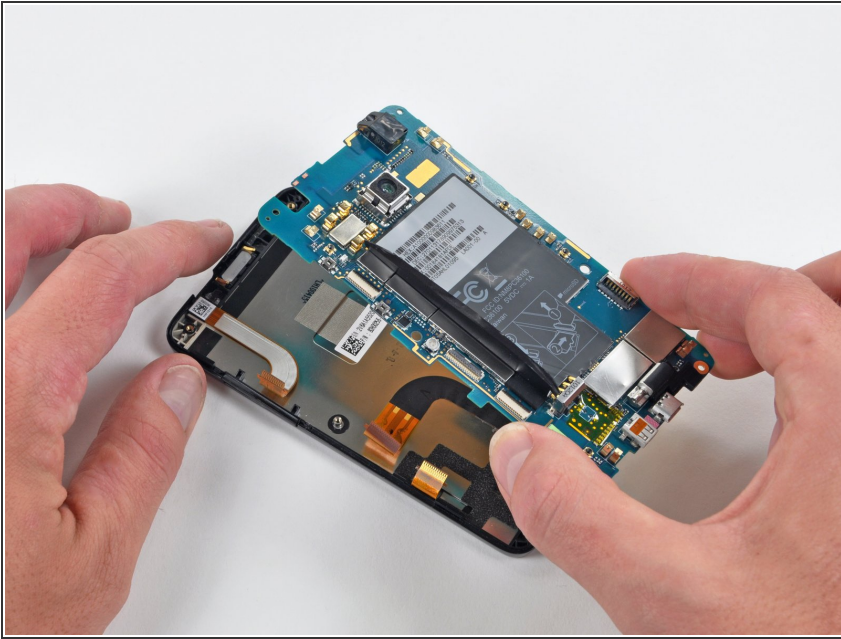
- Using the tip of an iPod opening tool, flip up the front panel ribbon cable retaining flap.
- Use a pair of tweezers to pull the front panel ribbon cable straight out of its socket.

Step 17



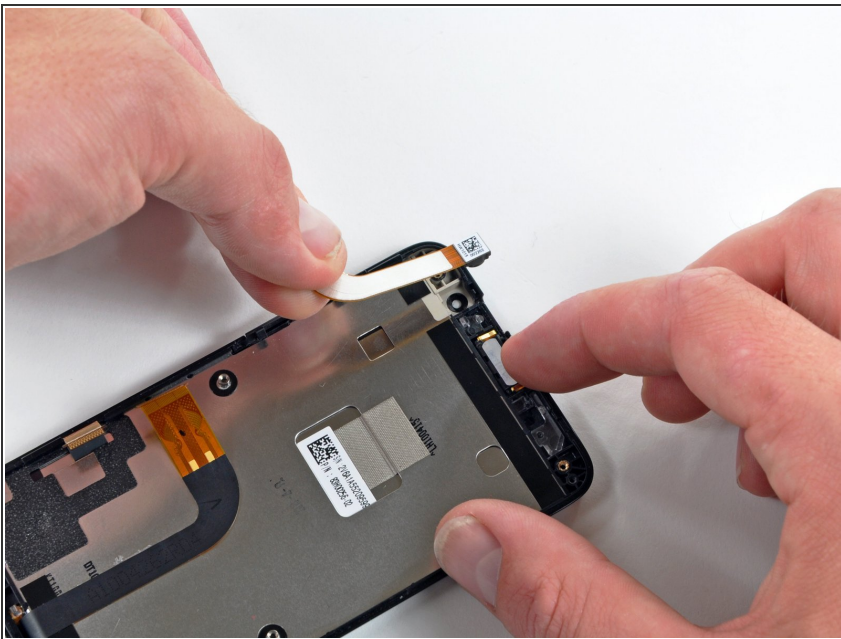
- Using the tip of an iPod opening tool, flip up the display ribbon cable retaining flap.
- Grasp the display ribbon cable with a pair of tweezers and pull it straight out of its socket.

Step 18



- Carefully lift the motherboard out of the inner case, minding any cables that may get caught.
- ⓘ Be mindful of the top power button and side rocker switch, which may fall out of the front case when the board is removed.

Step 19 — Front Facing Camera



- Gently lift the front-facing camera out of its recess in the inner case and remove it from the Evo.

Step 20 — Front Panel



- i** In the following steps, you will use a heat gun to soften the adhesive securing the outer black border around the underside of the front glass panel to the inner case.
- With the heat gun set to low, start by heating the outer black border near the upper left corner of the glass panel.
- Try not to excessively heat the outer plastic edge of the Evo.
- i** Due to the heat applied, it is normal for a layer of condensation to develop on the inside of the glass panel and/or the outside of the LCD. It can be removed with glass cleaner once the glass is separated from the display.

Step 21



- Gently insert an iPod opening tool between the glass front panel and its plastic surround near the upper top left corner of the Evo.
- Carefully pry up the glass, being careful not to bend it excessively.
- ☑ The key is to work slowly and gently to avoid breaking internal components.

Step 22



- Use a heat gun to soften the adhesive along the left side of the front glass panel.

Step 23



- Insert the iPod opening tool between the front panel and its plastic surround and pry up at several points along the left edge of the Evo.

Step 24



- Continue the heating and prying procedure, now focusing on detaching the bottom of the front panel from the plastic surround.
- Pry along the bottom edge of the Evo to further separate the front panel from the rest of the device.

Step 25



- Use a heat gun to soften the adhesive along the right side of the front glass panel.

Step 26

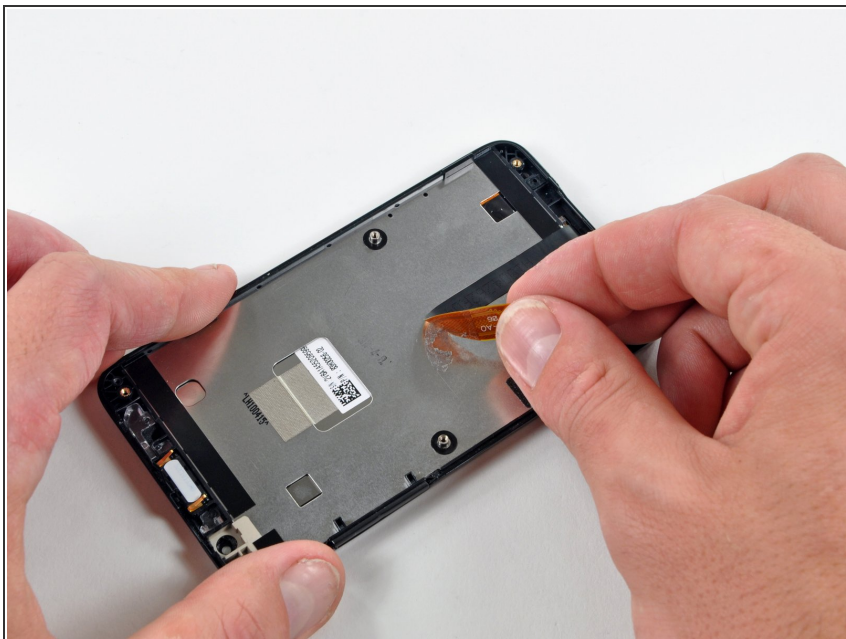


- Pry up the front panel along the right edge using the method described in previous steps.
- Eventually work around the entire perimeter of the front panel until it is lifted slightly from the inner case.



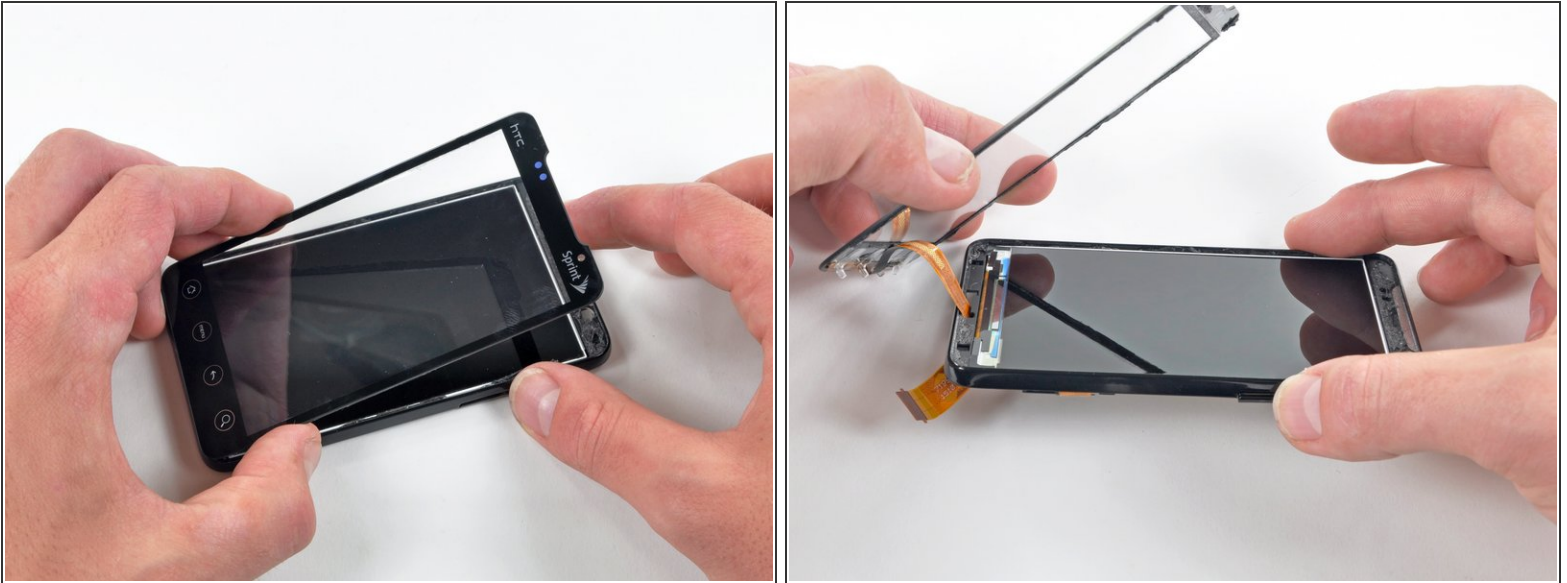
Don't try to completely remove the front panel just yet. Its ribbon cable is still attached to the inner case.

Step 27



- Peel the front panel ribbon cable off the adhesive securing it to the metal underside of the inner case.

Step 28



- Lift the front panel out of the inner case, minding the cable still routed through the bottom of the Evo.
- Carefully de-route the front panel ribbon cable through the slot in the inner case.
- Remove the front panel.
- Notice the four (4) clear plastic hooks that are adhered behind the menu buttons. Look closely. Each one is shaped differently and in a particular orientation.
- If the replacement front panel does not have these installed already, carefully remove and transfer them from the old panel to the replacement.

To reassemble your device, follow these instructions in reverse order.