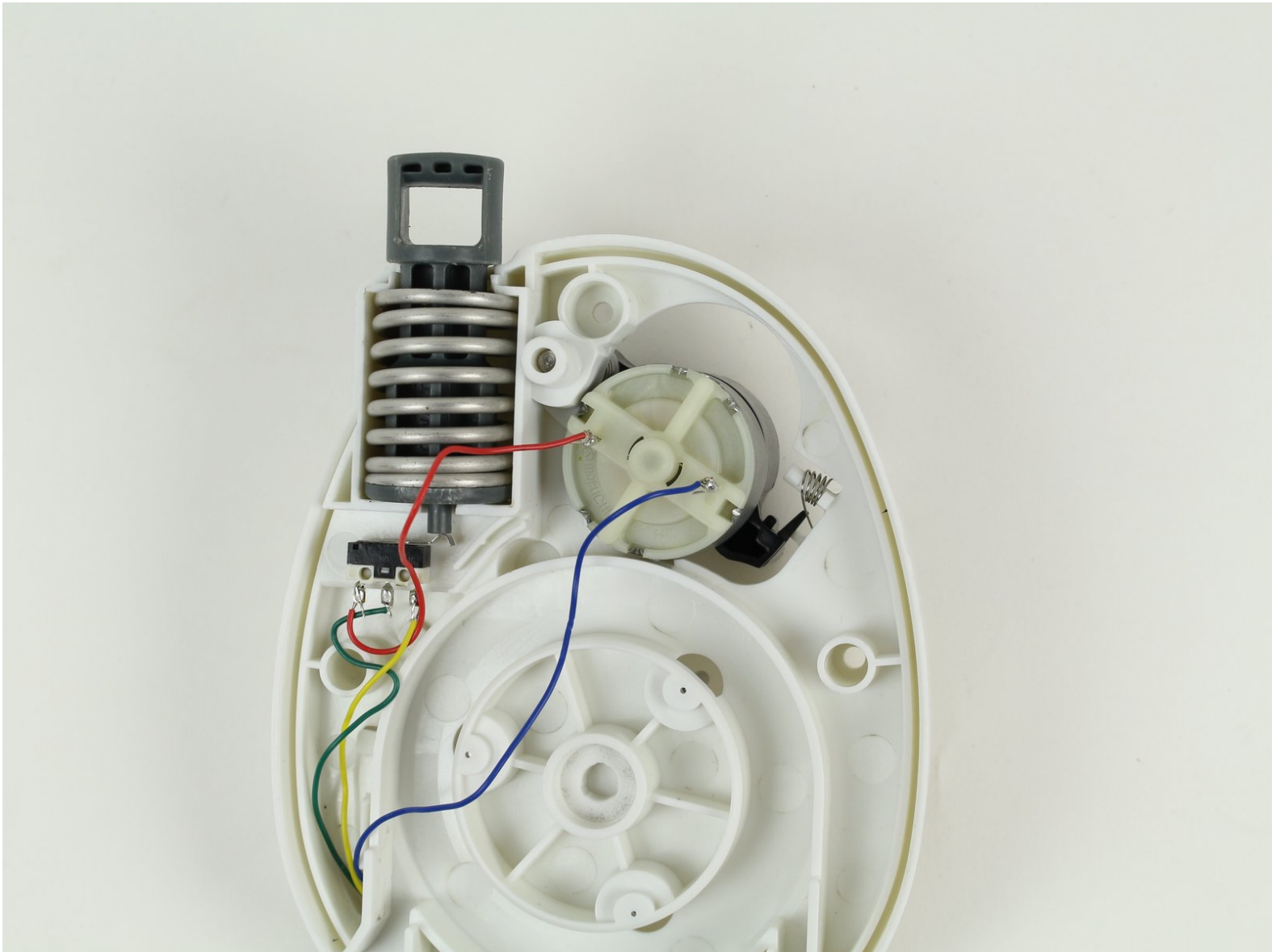




# GravityLight Mounting Post Replacement and Spring Replacement

This guide will show how to replace the mounting post and spring in the Gravitylight.

Written By: Jamie Forslin



## INTRODUCTION

To remove the mounting post, you must take out all internal parts in front of the mounting post. Push down on the spring that is holding the mounting post in place. When the spring is compressed, both the mounting post and the spring can be removed if you push them away from the outside casing.



### TOOLS:

- [Phillips #00 Screwdriver](#) (1)
-

## Step 1 — Removing the Front Panel



- Flip the GravityLight on its back and place it on a sturdy surface.
- Unscrew the three 2cm Phillips #00 screws on the back of the GravityLight's body.

## Step 2 — Opening the Device Housing



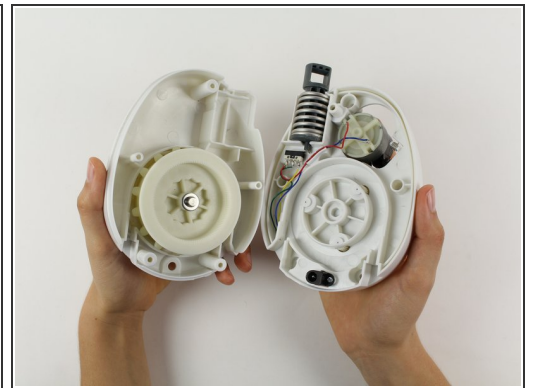
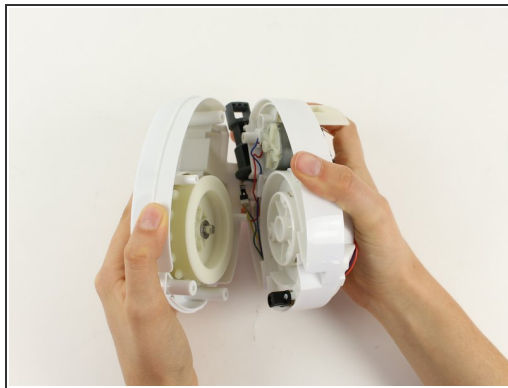
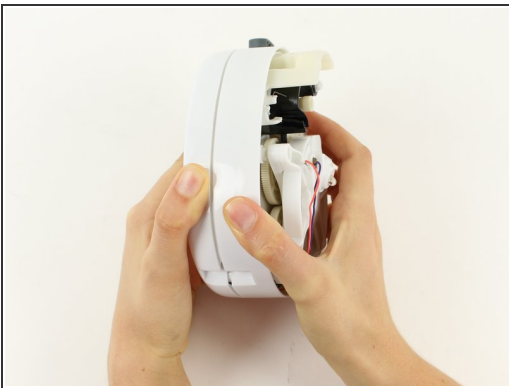
- ⚠ Some of the internal pieces may loosen or fall out during disassembly.
- Firmly grasp both parts of the GravityLight body and pull them apart.


### Step 3 — Removing the Back Panel Screws



- Place the back panel, the larger of the two pieces, on a sturdy surface with its back down.
- Unscrew the two 2cm Phillips 00 screws on the inside of the back panel.

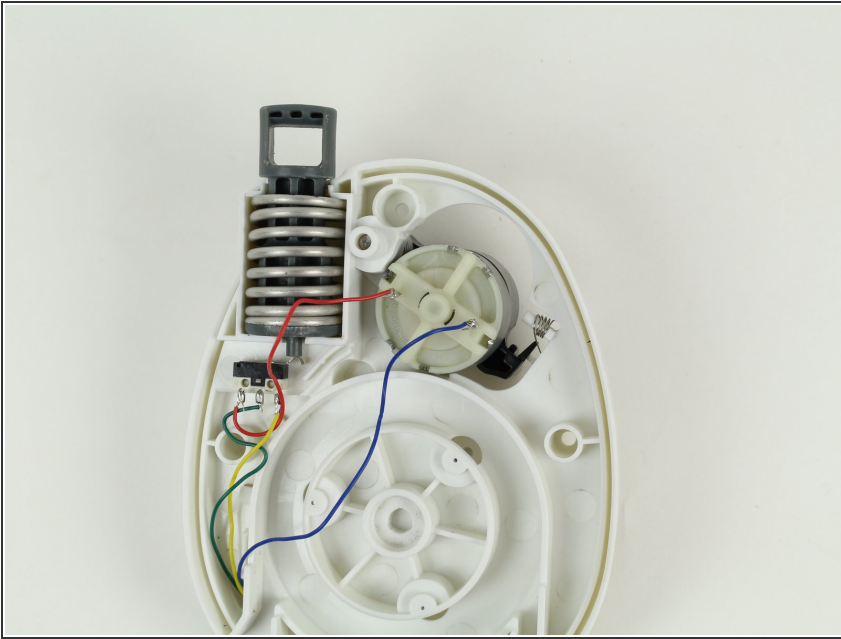
### Step 4 — Separating the Back Panel Housing



 Some of the internal pieces may loosen or fall out during disassembly.

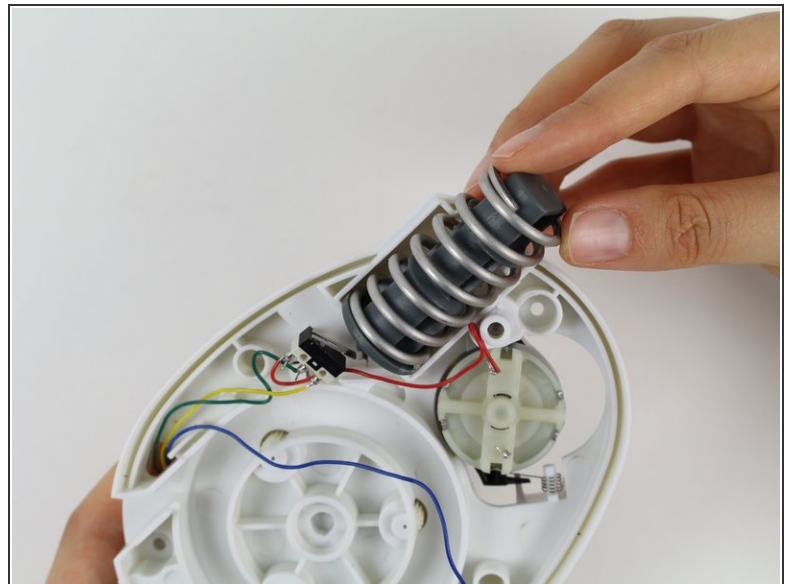
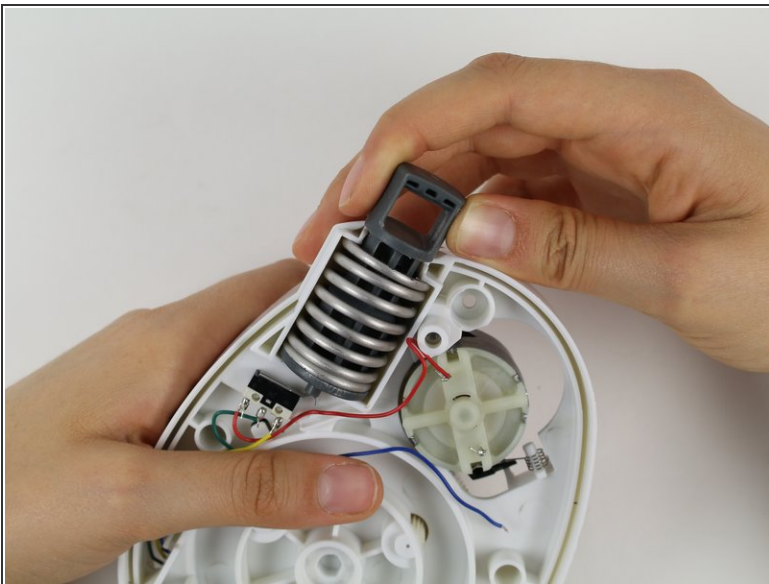
- Firmly grasp both parts of the back panel and pull them apart.

## Step 5 — Orienting the Middle Section



- Place the middle section on a sturdy surface.
- Move any wires in front of the mounting post.

## Step 6 — Removing the Mounting Post from the Middle Section.



- Push down on the spring.
- ⓘ The spring is very stiff. Compressing the spring requires a moderate amount of force.
- Push the spring and the mounting post away from the middle section and remove them from the pocket.



## Step 7 — Separate Mounting Post and Spring



- Pull the mounting post out of the inside of the spring

To reassemble your device, follow these instructions in reverse order.