



LG Optimus 3D Rear Camera Replacement

This guide will show you how to remove the dual camera assembly in your LG Optimus 3D.

Written By: Dale Pearson



INTRODUCTION

Make sure your phone is turned off before beginning any dissection of your device.



TOOLS:

- [Heat Gun](#) (1)
 - [Phillips #00 Screwdriver](#) (1)
 - [iFixit Opening Tools](#) (1)
 - [Spudger](#) (1)
-

Step 1 — Back Cover Removal



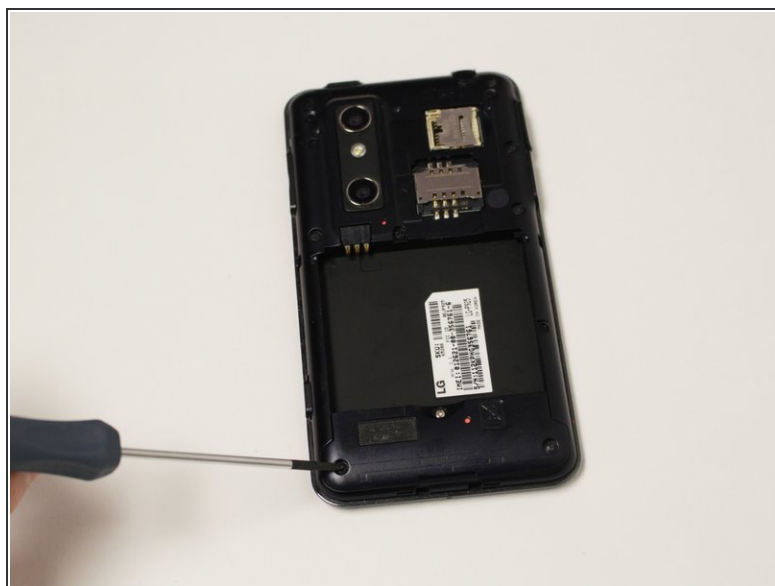
- Pry the back cover off of the phone with your fingernail. There is a notch located at the bottom of the phone for improved leverage.

Step 2 — Battery Removal



- The battery is the large black rectangle towards the bottom half of the phone.
- There is a semi-circular notch at the bottom edge of the battery. Press against and up on the battery to pop it out.

Step 3 — Screw Removal



- Remove 9 screws from the phone. The locations of these screws are circled in the picture.
- 5.5mm length PH00 screws
- 4mm length PH00 screws

Step 4 — Bottom Cover Removal



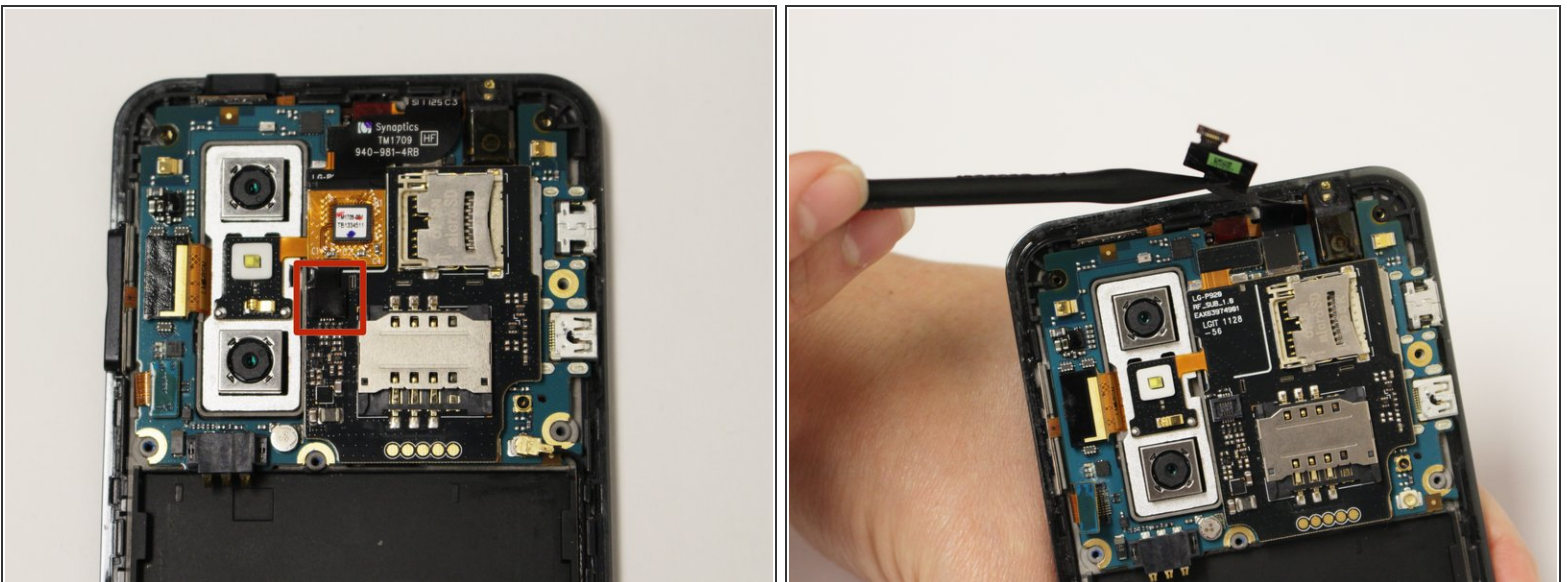
- Gently pull down on the bottom cover to remove it.

Step 5 — Mid-Cover Bezel Removal



- Using a plastic opening tool, gently pry around the perimeter of the device.
- ⚠ The ribbons behind the buttons and ports are very delicate. Make sure you do not run your plastic opening tool too deep into the bezel, as you could damage them.
- The button covers rest under the Mid-Cover Bezel. Remove them and set aside.

Step 6 — Ribbon Cable Disconnection



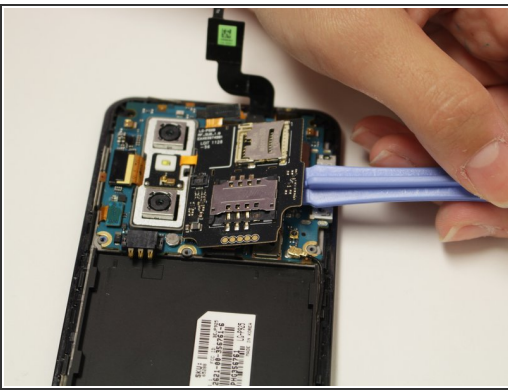
- Using a spudger or plastic opening tool, gently disconnect the ribbon cable attached to the black SIM card board.

Step 7 — Adhesive Loosening



- Use a hair-dryer on high, or a heat-gun on low to heat the device and loosen the adhesive which holds down the SD/SIM Card Board.
 - Evenly heat the device in short intervals for about one minute.
- ⚠ Do not heat the device for more than 30 seconds at a time to prevent over-heating.

Step 8 — SD/SIM Card Board Removal



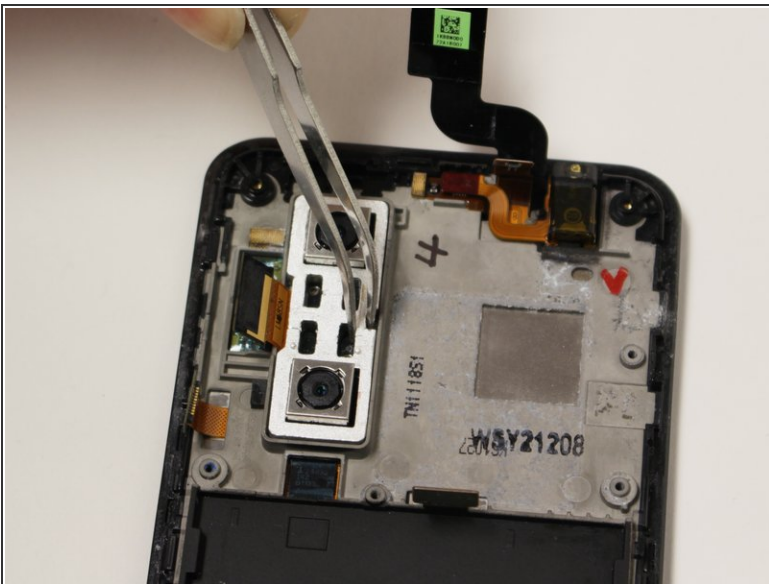
- Gently pry the board up to release it from the now soft adhesive. Make sure you pry up the little tab connected to the camera unit as well.
- If the board is too difficult to separate than more heating may be required.

Step 9 — Heat Adhesive



- Heat the camera assembly in 20-30 seconds intervals with a heat gun set on low, or a hair drying set on high.
- ⓘ Although the motherboard assembly has been removed in the picture, it is not necessary to remove it for camera removal.

Step 10 — Remove Camera Assembly



- Using tweezers or a pry tool, gently wiggle and lift the camera assembly away from the body of the phone.
- ⓘ Although the motherboard has been removed in the pictures, it is not necessary to remove it before removing the camera.

To reassemble your device, follow these instructions in reverse order.