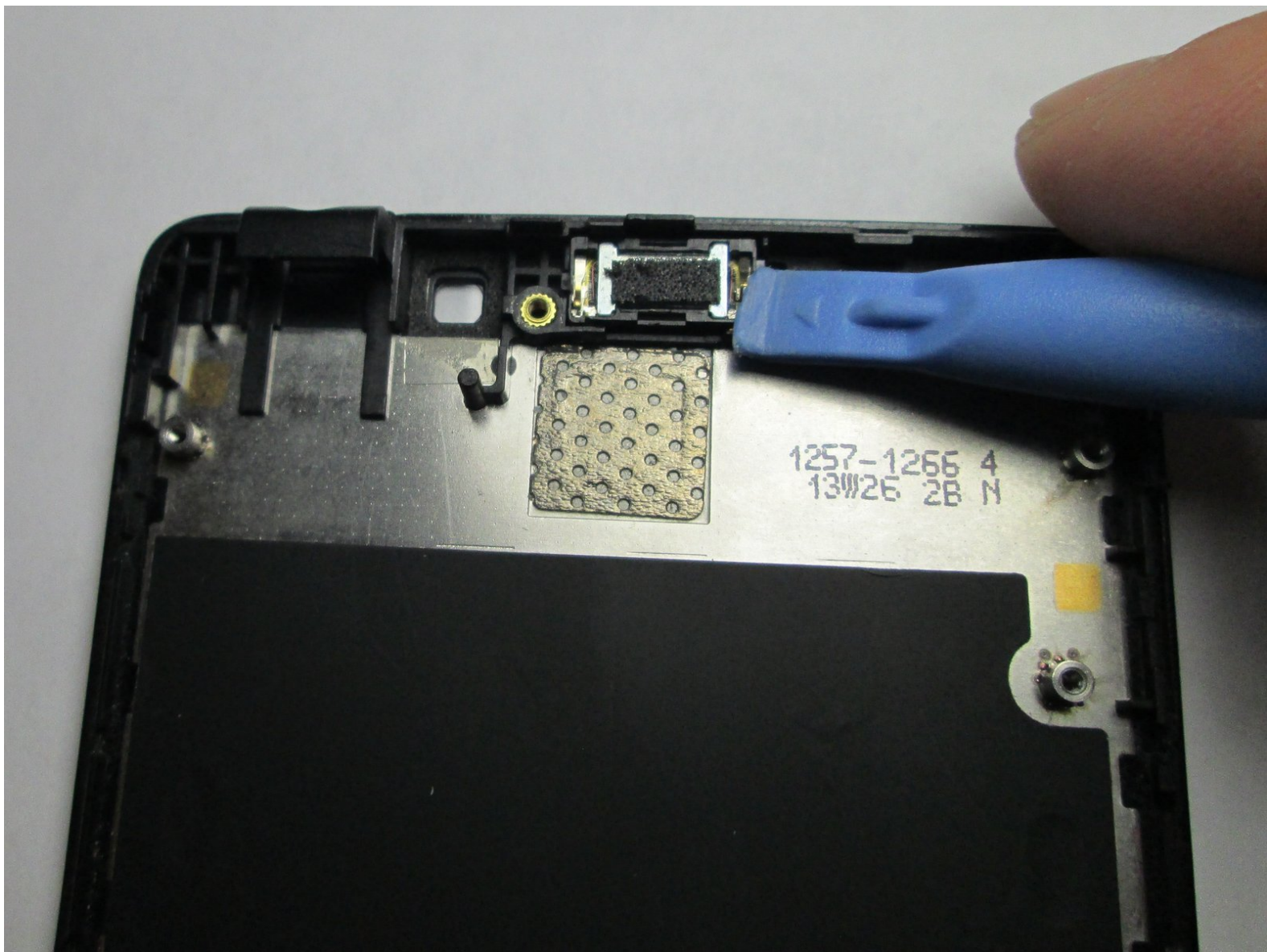




# Sony Xperia TL Ear Speaker Replacement

The ear speaker is the last piece you can access in the phone. It is underneath the motherboard and allows you to hear the other person speaking.

Written By: Adam Giniger



---

## INTRODUCTION

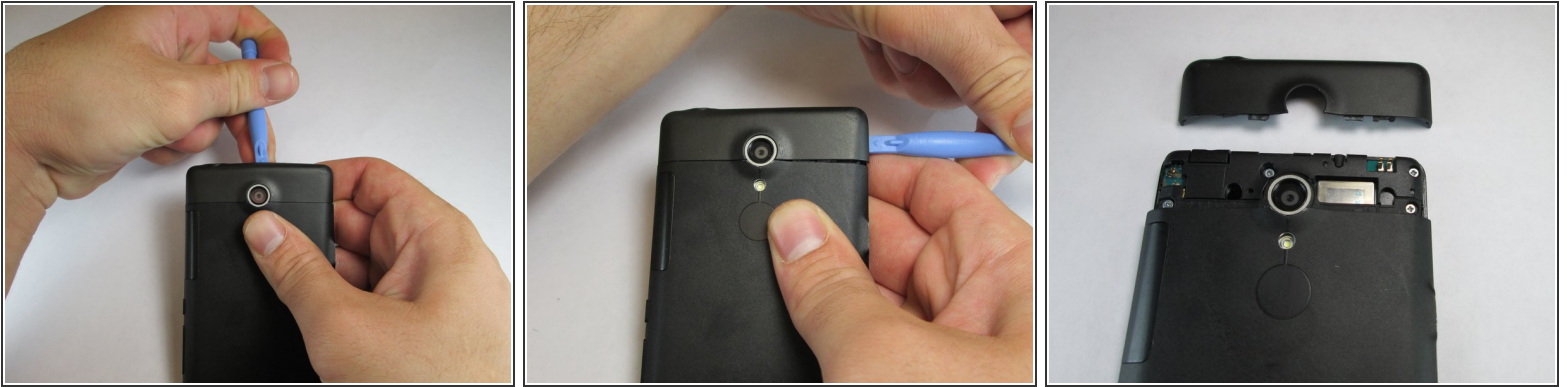
I will teach you how to access and replace the piece.



### TOOLS:

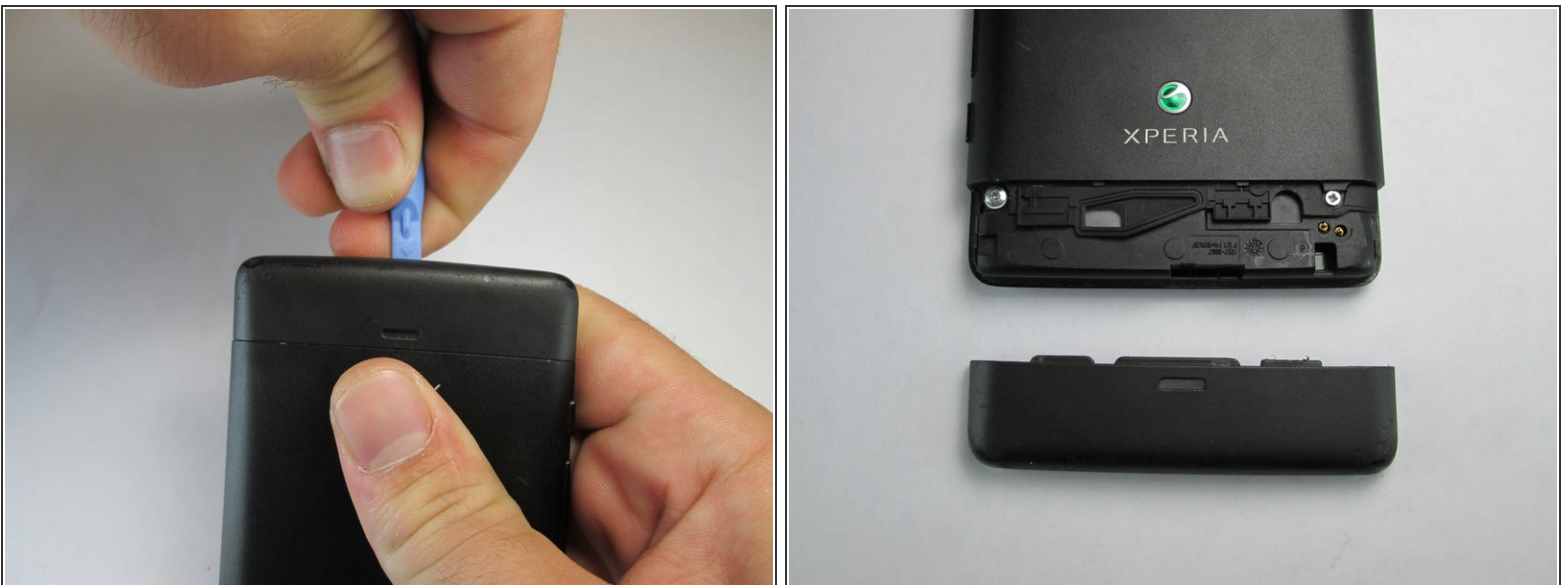
- [Phillips #00 Screwdriver](#) (1)
  - [iFixit Opening Tools](#) (1)
-

## Step 1 — Remove Top Plastic Section



- Use the plastic opening tool to pry the top plastic section off.

## Step 2 — Remove Bottom Plastic Section



- Use the plastic opening tool to pry the bottom plastic section off.

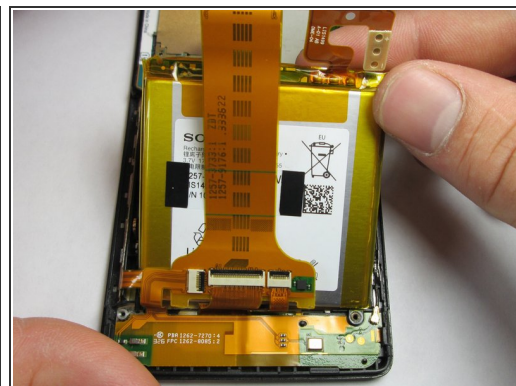
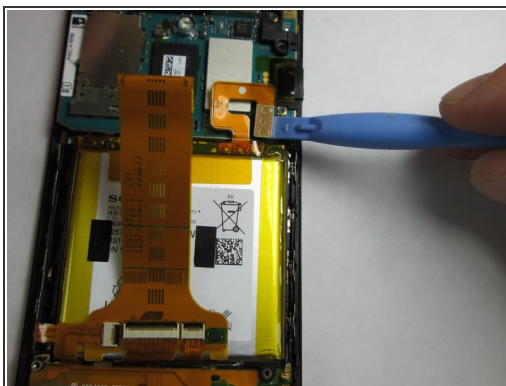
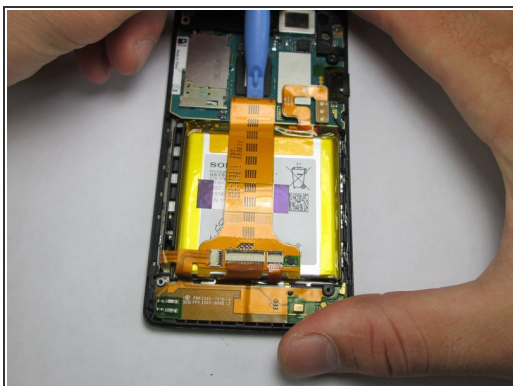


### Step 3 — Unscrewing the Back Off



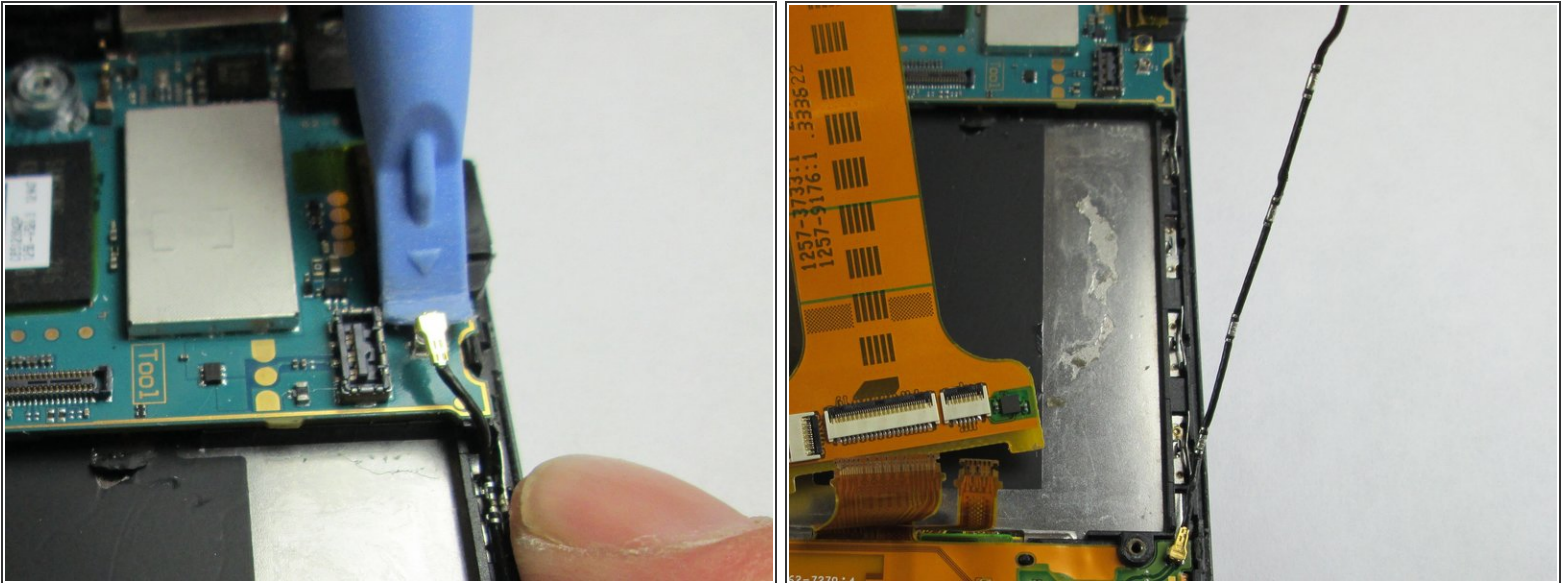
- Remove the four 5mm screws.
- Use the plastic opening tool to pry off the back.

### Step 4 — Battery



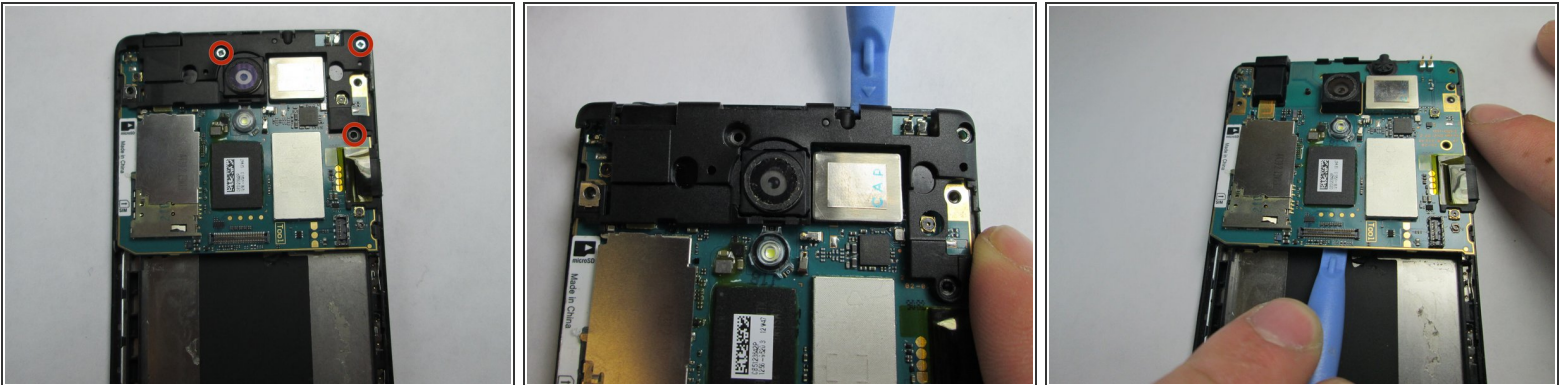
- Use the plastic opening tool to detach the ribbon running across the battery.
- Use the plastic opening tool to detach the ribbon connecting the battery to the motherboard.

## Step 5 — Sony Xperia TL Auxiliary Cord Replacement



- Use the plastic opening tool to unlatch the cord's ends off the motherboard and loud speaker module. The cord can be located on the right side of the phone.

## Step 6 — Motherboard



- Use the Phillips #00 to remove the 3 5mm screws.
- Lift the plastic cover off.
- Use the plastic opening tool to pry the motherboard out of the phone shell.

## Step 7 — Ear Speaker



- Use the plastic opening tool to detach the ear piece speaker.
- ⓘ Avoid majorly bending the tiny metal hooks holding the ear piece in.

To reassemble your device, follow these instructions in reverse order.