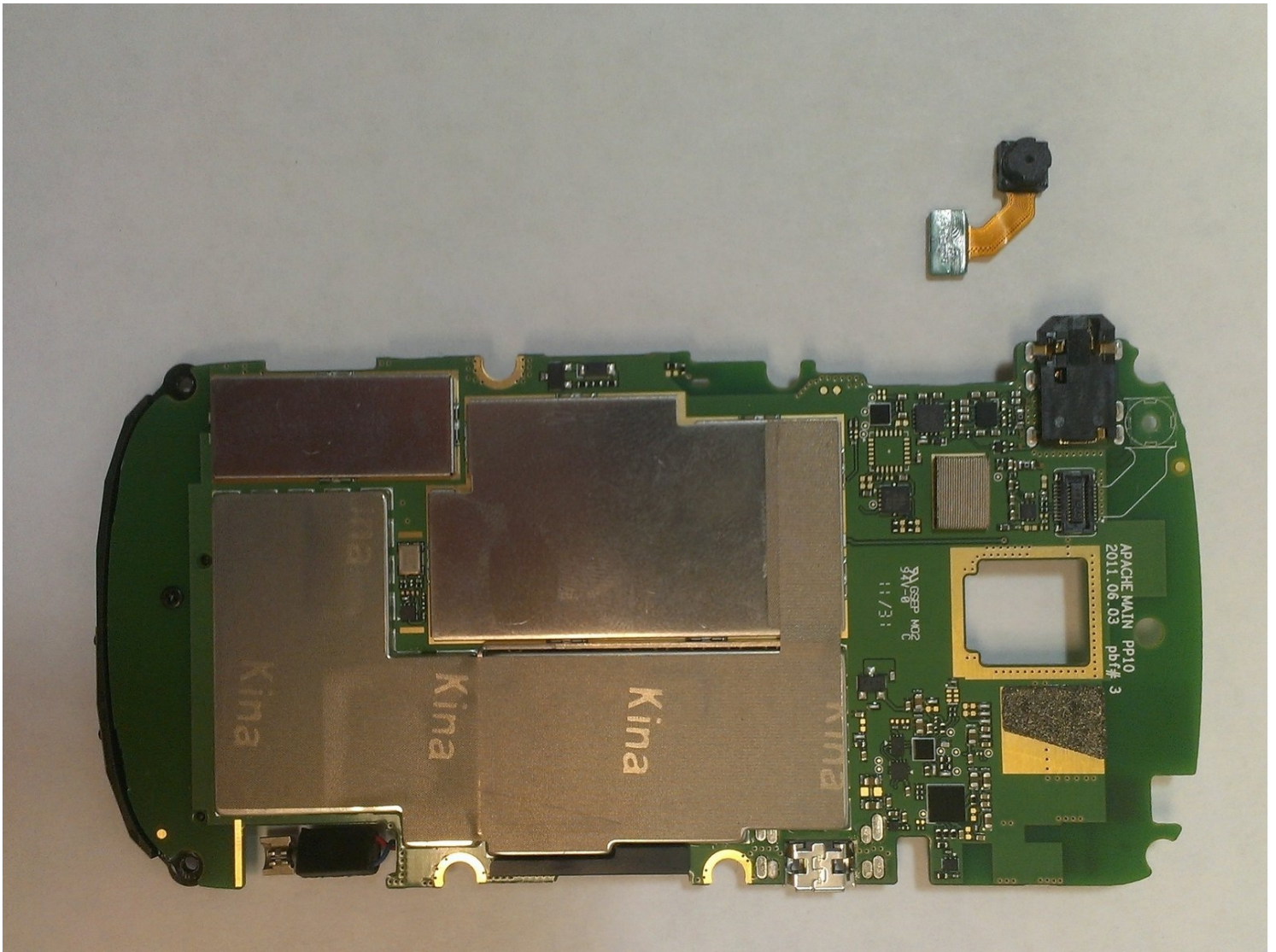




# Pantech Breakout Front Facing Camera Replacement

Written By: Ryan Murphy



---

## TOOLS:

Phillips #000 Screwdriver (1)

iFixit Opening Tool (1)

Tweezers (1)

---

### Step 1 — Removing Back Cover



 Before proceeding, completely power off phone and disconnect power cords to avoid electrical shock.

- Turn phone over so that the back side is facing up.
- Using a finger, apply moderate pressure to the top of the back cover while sliding the cover down and off.
- Lift and remove the back cover from the phone.

## Step 2 — Removing the Battery



- Locate the battery: It is a silver, rectangular object.
- Insert a fingernail into the indent just below the battery about 0.5 inches from the bottom of the phone.
- Then, apply pressure to the battery, pushing up and away from the phone. It will come out easily.

## Step 3 — Remove Screws



- With the phone face down on a hard surface, locate the six 3.5mm Phillips screws around the perimeter of the phone.
  - Three of these screws are black, while three are silver.
  - Use a Phillips #00 or #000 screwdriver to remove all six Phillips screws.
- ☑ Righty Tighty, Lefty Loosey!



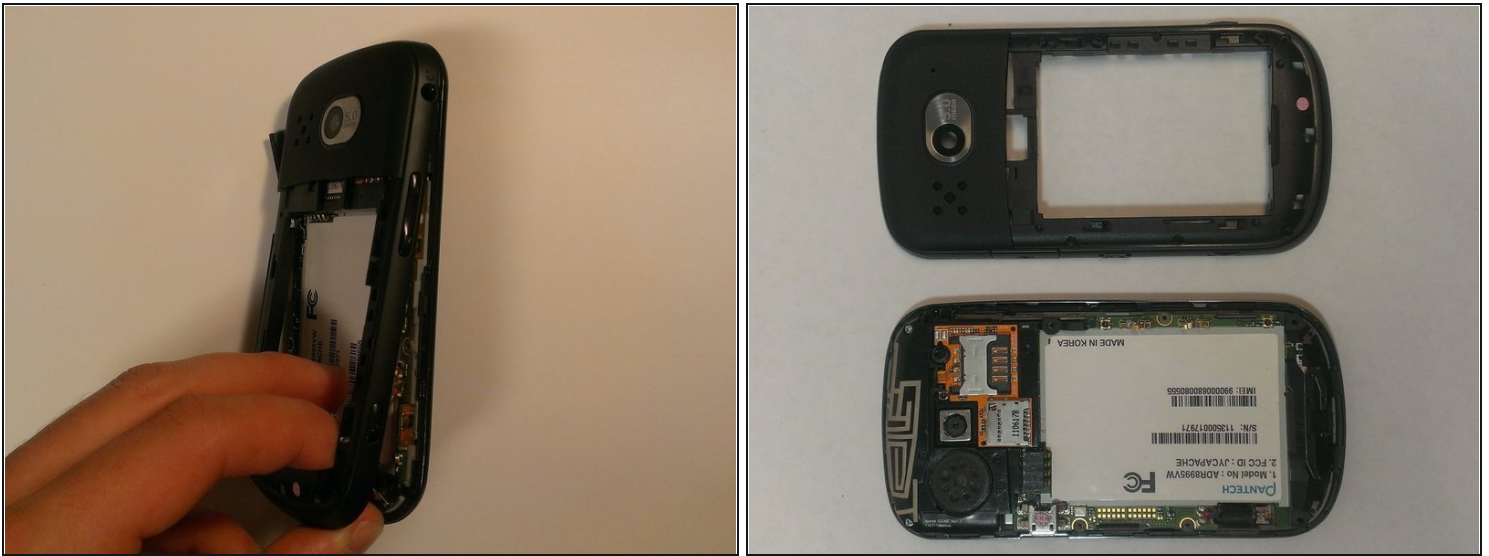
## Step 4 — Separating the Back Case



**⚠ Be careful when prying the plastic bezel and back case apart from each other; the parts are connected by both snaps and adhesive. Forcing the back case off could result in it breaking or cracking.**

- Slide a Plastic Opening Tool in between the front bezel and the back case, slowly working it around the tight edges.
- ① Be patient, it may take several tries to remove the bezel and back case successfully. You may need to slide repeatedly along the edges of the entire phone perimeter to loosen the adhesive between the two pieces.

## Step 5 — Removing Back Case



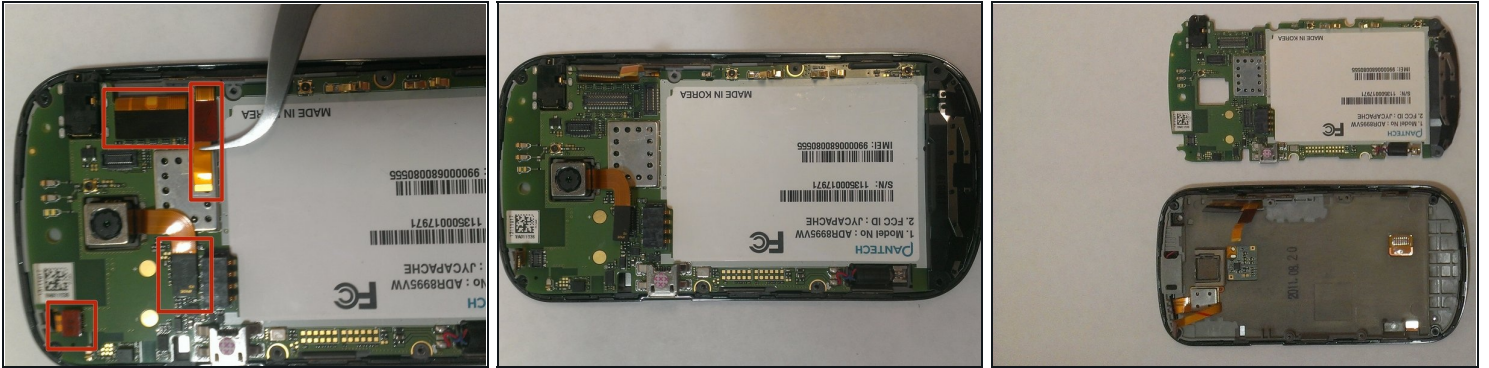
- Starting at the charging port cover open by prying away from front face to remove back case.
- ⓘ Make sure that no part of the back case is caught on any other part of the phone; the USB charging port can get in the way.
- After removing the bevel and back case of the phone, you will now see the motherboard and other internal components.

## Step 6 — Component Board Separation



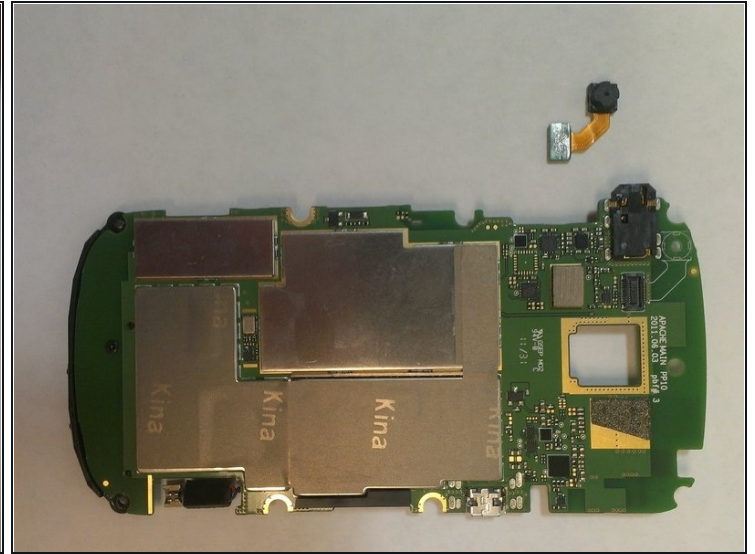
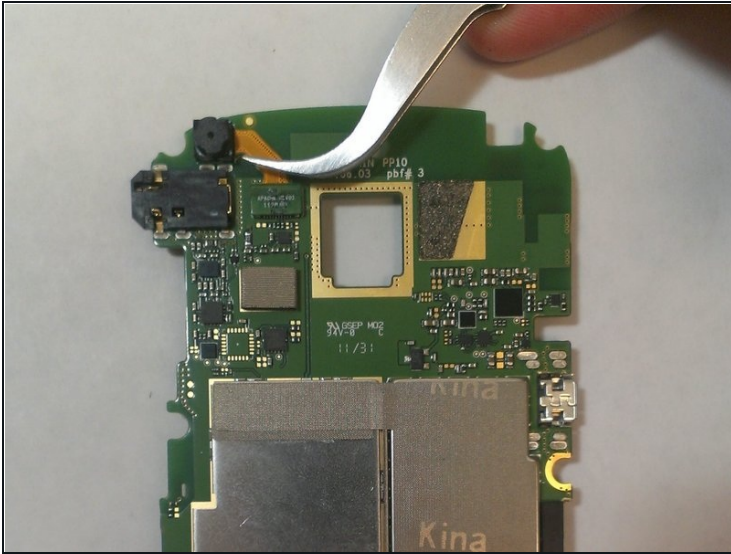
- After removal of front bezel and back cover, locate and remove two Phillips #000 screws from the top corners of the phone.
- After taking out the screws, lift off the black plastic piece containing the speaker, Micro SD card slot and SIM card slot.

## Step 7 — Disconnecting Ribbon Cables



- Locate the four ribbon connections near the top of the phone, above where the battery was.
  - Using a set of [Tweezers](#), carefully pull each ribbon up from its connection. After this is complete, the motherboard will freely separate from the back of the screen.
  - Separate motherboard from screen.
- ⓘ The vibrator motor will be dangling from the motherboard by a wire, it is not detachable.

## Step 8 — Remove Front Facing Camera



- ① The front facing camera is attached to the back of the motherboard by a single cable ribbon.
- Flip the motherboard over to the back, this is where the front facing camera is located.
- To remove, use a set of [Tweezers](#) to carefully pull the cable ribbon up from its connection.

When re-installing a front facing camera, carefully place the cable ribbon into its connection. Also, the cable ribbon of the front facing camera should come out the right side of the camera.