



Disassembling Black and Decker 3-Cup Rice Cooker Outside Panel and Wire Junctions

The Black and Decker 3-Cup Rice Cooker contains...

Written By: Steven Gerick



INTRODUCTION

The Black and Decker 3-Cup Rice Cooker contains a brass plate that prevents access to the inside of the device. The internal portion of the device contains wire junctions that prevent access to the internal parts. In this guide we will remove both.

TOOLS:

Phillips #1 Screwdriver (1)

Spanner 2.6 Screwdriver (1)


iFixit Opening Tool (1)

Masking Tape (1)

Colored Highlighters (1)

Step 1 — Remove the Lid and Bowl



 *Make sure the device is unplugged before beginning disassembly!*

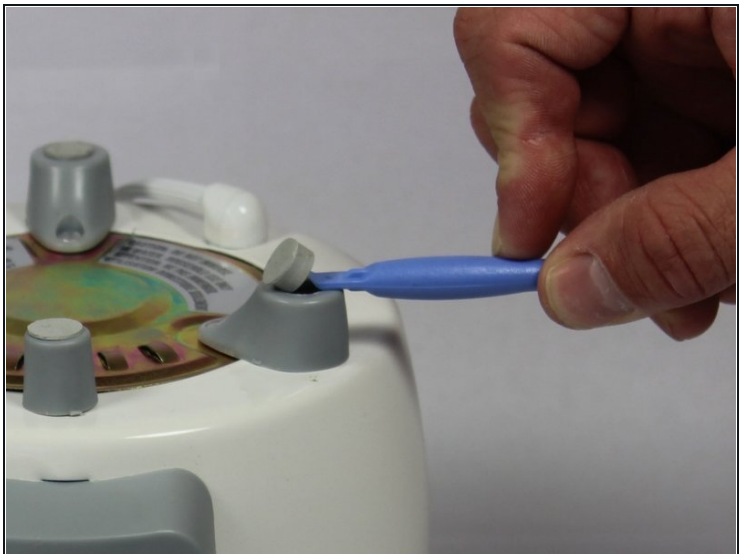
- Lift the lid and bowl from the top of the device.

Step 2 — Turn the Device Upside-Down



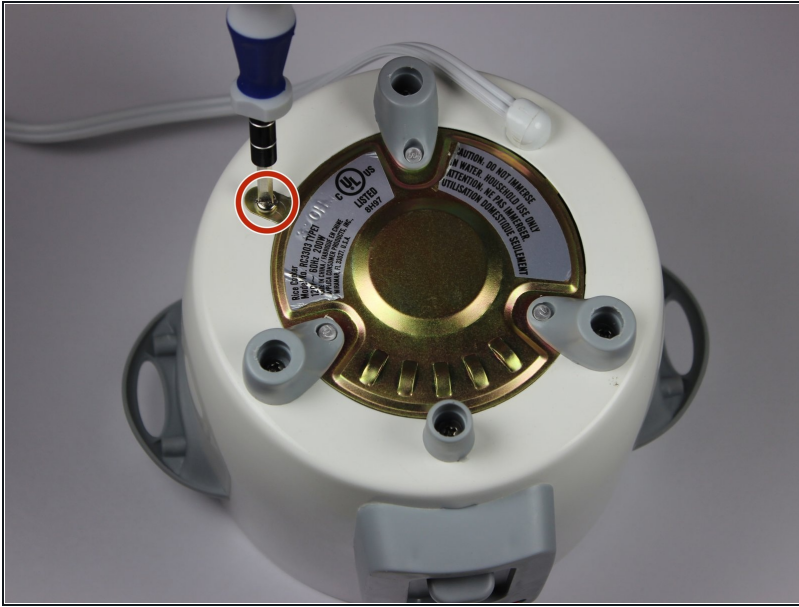
- Turn the device upside-down, so that the four legs of the device point upwards.

Step 3 — Remove the Rubber Cushions



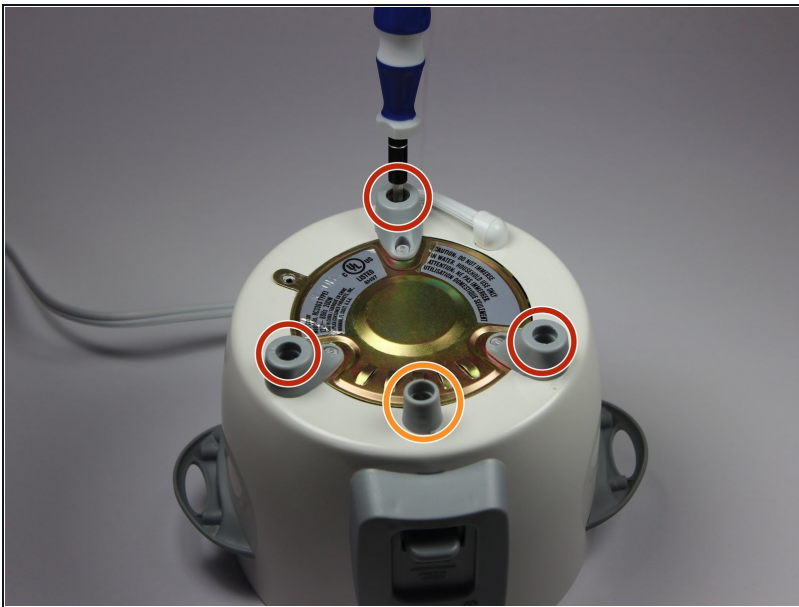
- Each of the four legs has a rubber cushion on its bottom. For each cushion, insert a plastic opening tool between the plastic leg and rubber cushion, and pry off the rubber cushion.

Step 4 — Remove the Spanning Screw



- Using a spanner screwdriver, remove the one 10mm long 7mm diameter spanner screw from the side of the brass panel.

Step 5 — Remove the Leg Screws



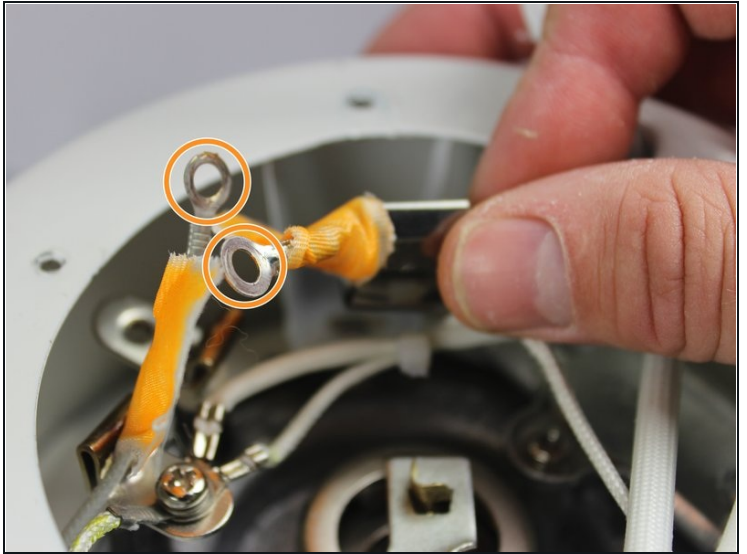
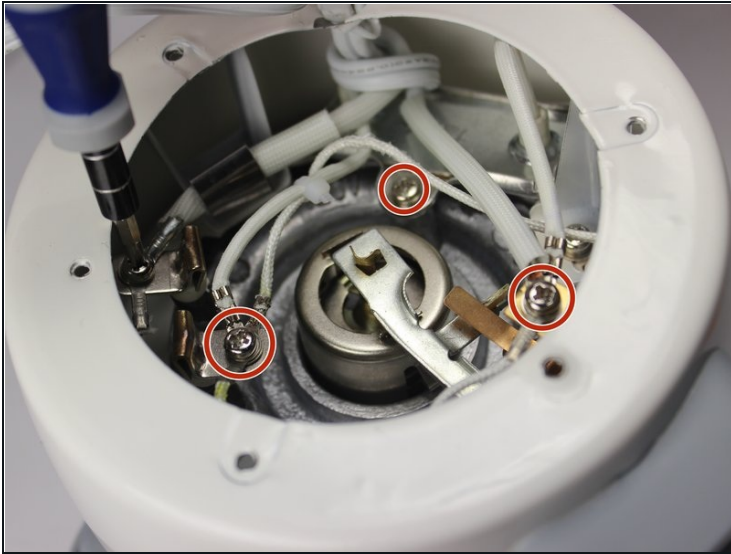
- Using a Phillips screwdriver, remove the 10mm long 7mm diameter Phillips-head screws from the inside of all four legs.
- The smaller leg at the bottom is now loose and not attached to the device. Set it aside.

Step 6 — Remove the Brass Plate



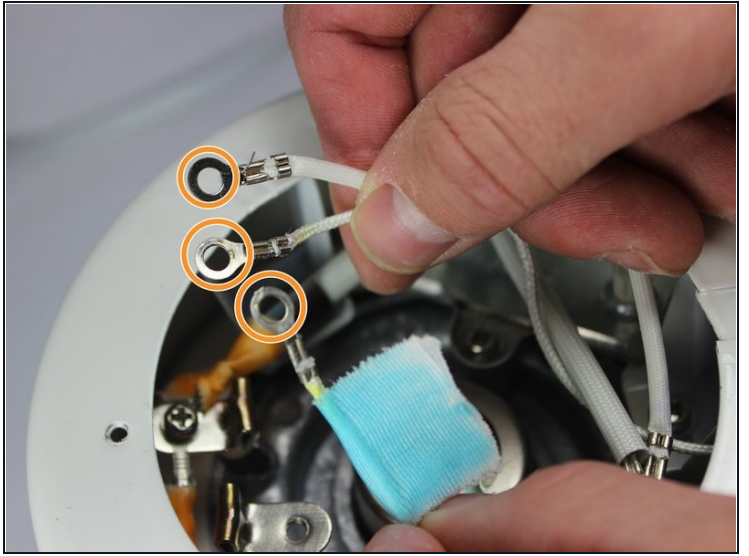
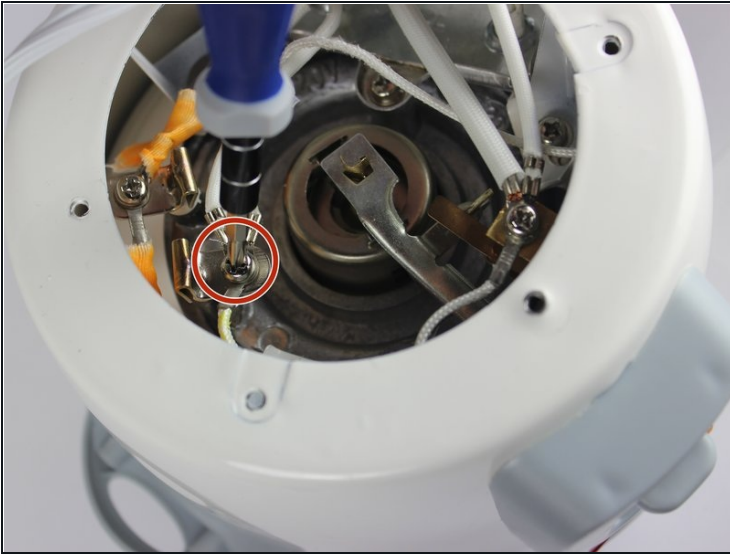
- Lift the brass plate off the device and set it aside.

Step 7 — Color the Wires



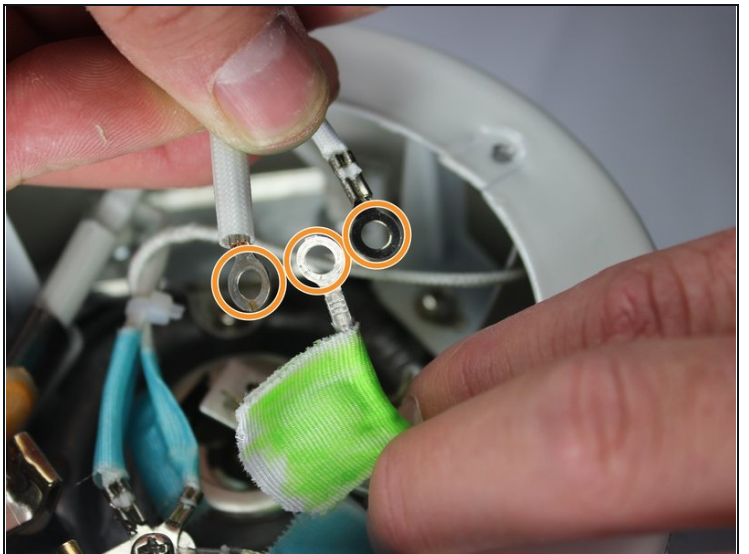
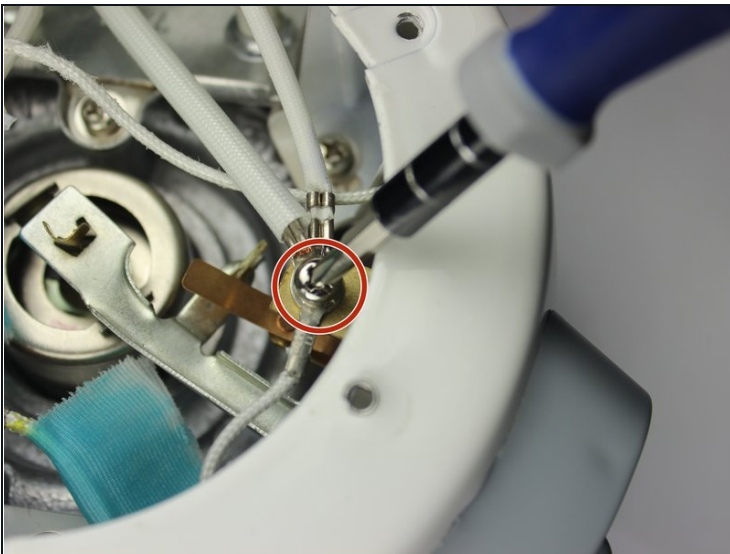
- ★ Color coordinating wire groups make it easier to identify the wire groups during reassembly.
- i Inside the device, there are three junctions with wires joined by Phillips-head screws. The first is connected to two wires, and the other two are connected to three wires each.
- Unscrew the screw at the junction near the opposite side of the device from the front panel.
- Label each of the two wires at this junction with a single color of tape.

Step 8 — Label the Second Wire Junction



- Unscrew the screw at the junction just clockwise from the button panel.
- Label the three wires of this junction with tape of a second color.

Step 9 — Label the Third Wire Junction



- Unscrew the screw from the wire junction just behind the front panel.
- Label the three wires at this junction with a third color of tape.

To reassemble your device, follow these instructions in reverse order.

