



# Samsung Galaxy S4 Active Speaker Replacement

This guide will show you how to replace the speaker on your Samsung Galaxy S4 Active

Written By: Miguel Labrador



## INTRODUCTION

If you need to replace the speaker on your Samsung Galaxy S4 Active because it no longer works, follow this guide.



### TOOLS:

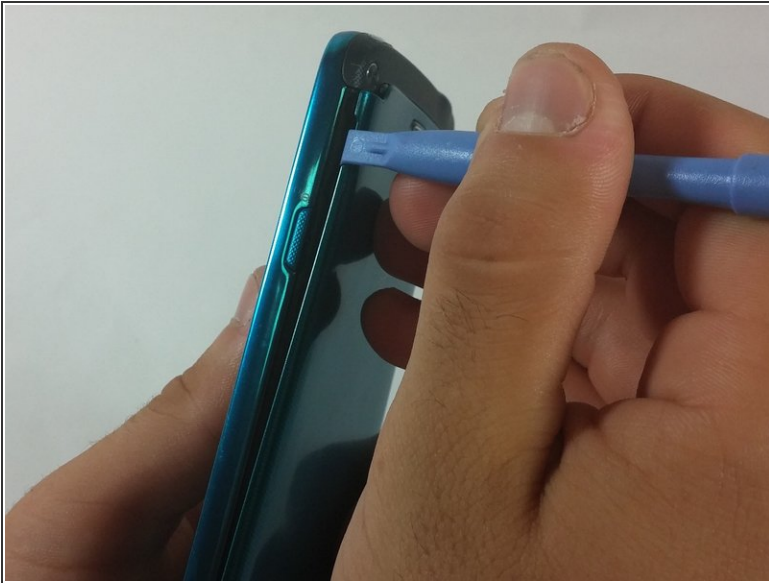
- [iFixit Opening Tools](#) (1)
- [iFixit Opening Picks set of 6](#) (1)
- [Spudger](#) (1)
- [Phillips #00 Screwdriver](#) (1)



### PARTS:

- [Samsung Mini S4 Loud Speaker](#) (1)

## Step 1 — Rear case removal



- Pry the rear case off with a plastic opening tool starting at the divot to the left of the rear-facing camera, near the power button.
- Lift the rear case with your hands by the corner nearest the divot and remove it from the phone.

## Step 2 — MicroSD Card removal



- Use the flat end of a spudger to press the microSD card deeper into its slot until you hear a click.
- The MicroSD card will pop out of the slot.
- Remove the card with your hand.



### Step 3 — SIM Card removal



- Use a plastic opening tool to press the SIM card deeper into its slot until you hear a click
- The card will pop out.
- Remove the card with your hands.

### Step 4 — Battery removal



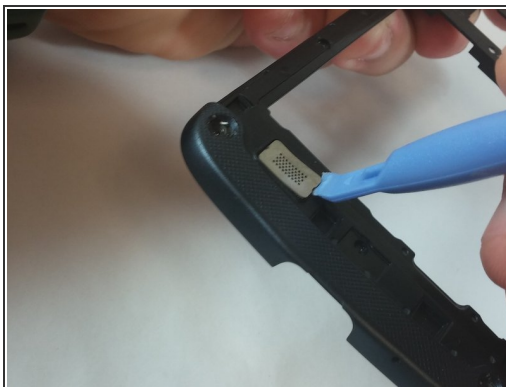
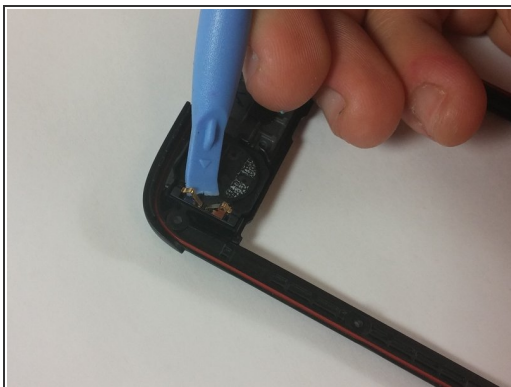
- Insert the plastic opening tool into the notch of the battery compartment near the bottom right corner and lift the battery up.
- Remove the battery with your hand.

## Step 5 — Midframe removal



- Using the provided screwdriver, remove the (8) 4.0 mm Phillips #00 screws that hold the midframe in place.
- Starting on the volume button side of the phone, insert your plastic opening tool into the seam between the display glass and the larger chrome border piece
- Slide the opening tool along the seam in either direction. Plastic clips will become separated.
- Once you have pried off all of the plastic clips around the perimeter of the phone, you may remove the midframe from the display.

## Step 6 — Speaker enclosure removal



- Hold the midframe in one hand and the speaker enclosure in your other hand.
- Use the prying tool to pry off the silver screen side of the speaker.
- Use a sharp tool to poke out the speaker enclosure.

## Step 7 — New speaker replacement



- Insert your new speaker, in its enclosure, back onto the midframe.

To reassemble your device, follow these instructions in reverse order.