



Toshiba Satellite A215-S7425 Screen Replacement

Written By: Marianne

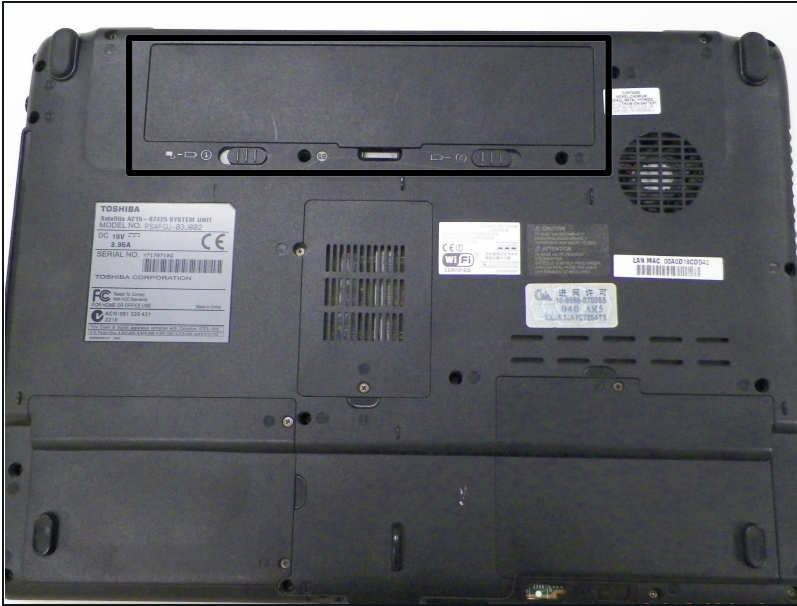


TOOLS:

Spudger (1)

Phillips #1 Screwdriver (1)

Step 1 — Battery

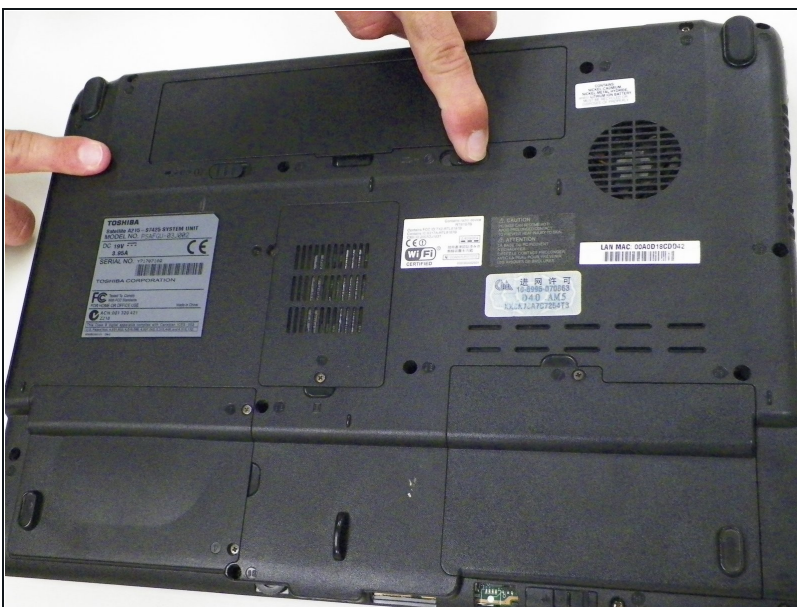



- Turn off the computer.
- Disconnect the charging cable from computer.

 **Failure to unplug the cable could result in electric shock.**

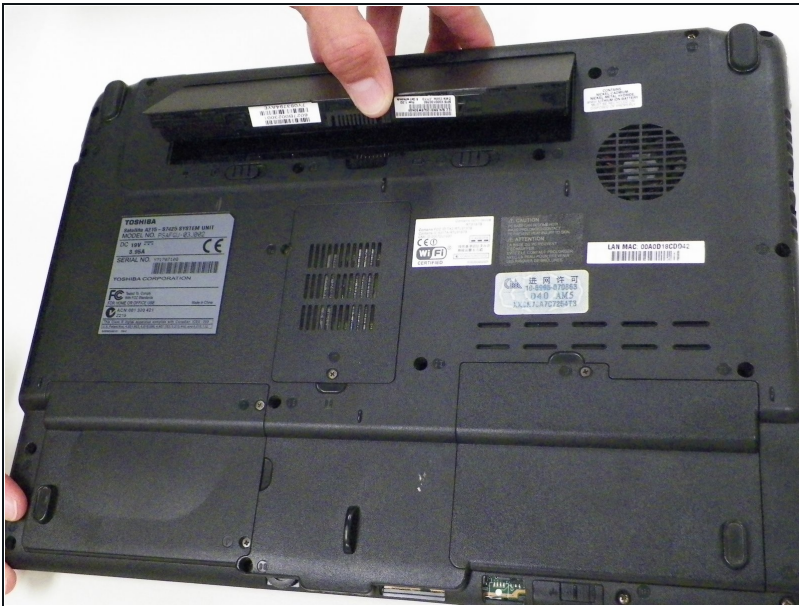
- Flip the computer upside down.

Step 2



- Slide latches labeled #1 and #2, located outside the battery cover, away from each other.
-  Latch #1 will click over and stay while latch #2 will have to be held for battery to release.

Step 3



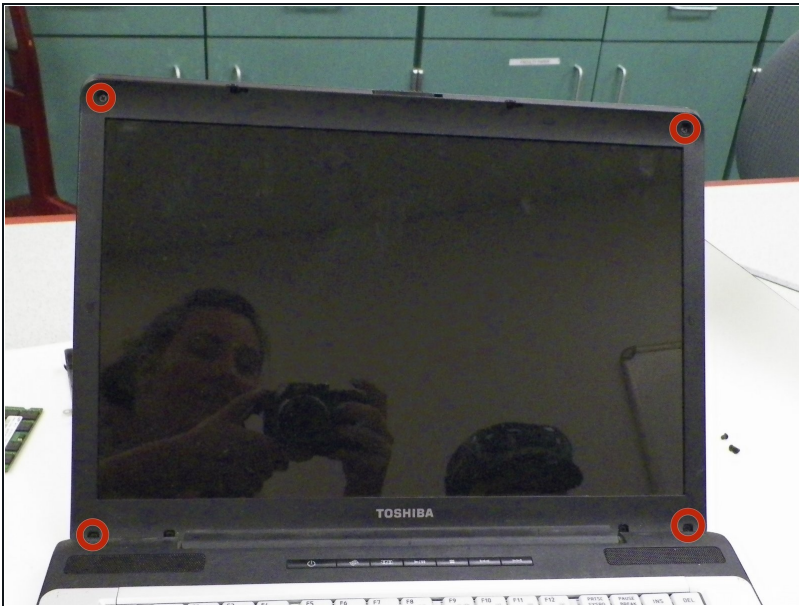
- Gently lift and pull the battery out of the device.

Step 4 — Screen



- Use [tweezers](#) to remove rubber screw covers on **4** corners of frame around screen.

Step 5



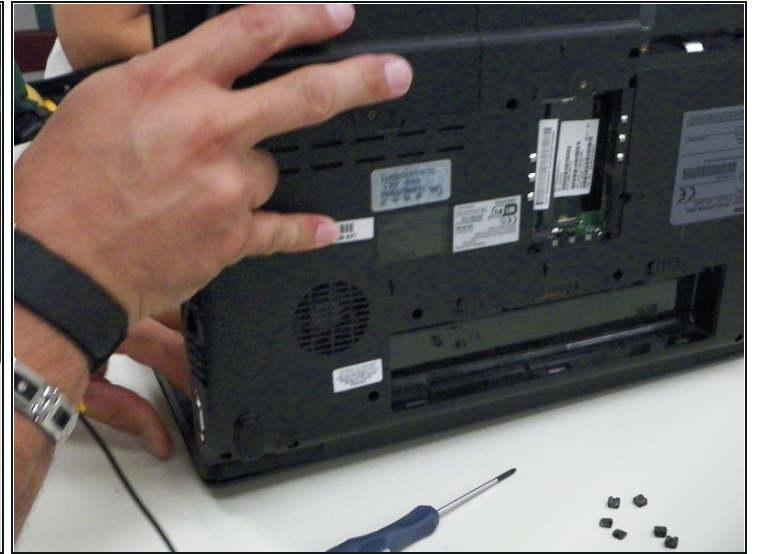
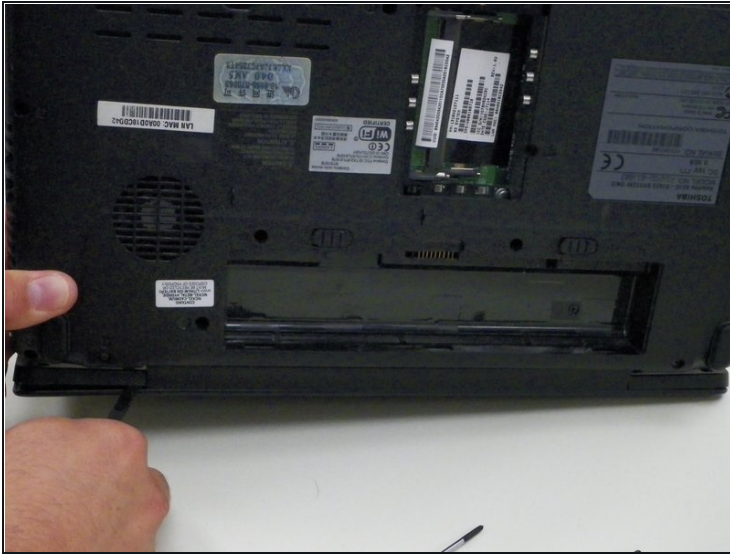
- Remove **4** Phillips 5.6 mm screws.

Step 6



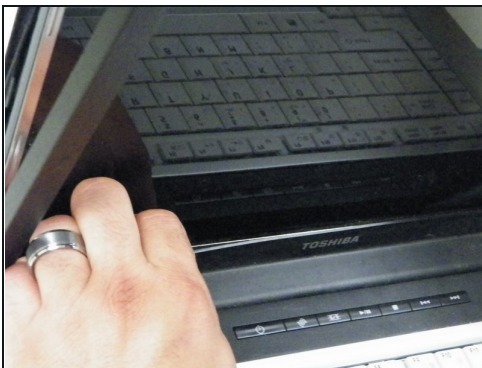
- Use flat side of spudger to pry the top and sides of the frame around screen.

Step 7



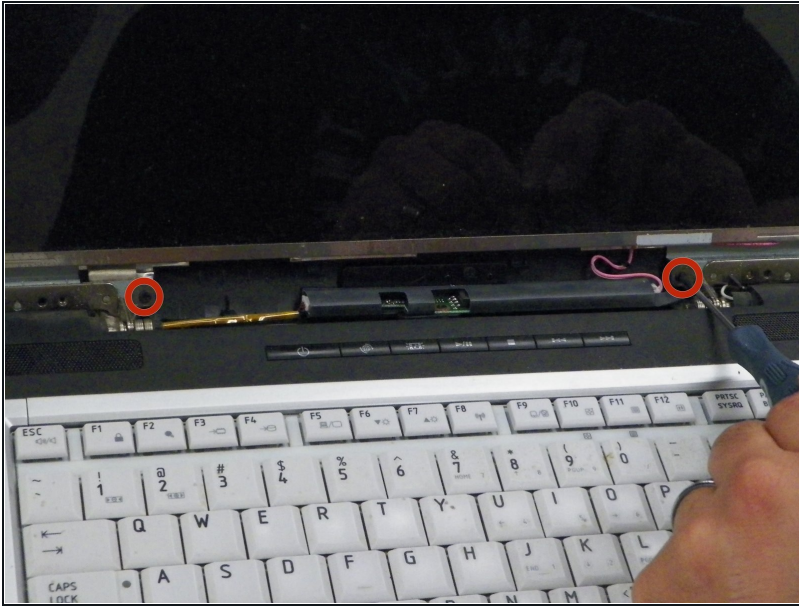
- Turn device onto its screen side to access the bottom of hinge portion of the screen and push bottom piece of frame along device hinge until it loosens.

Step 8



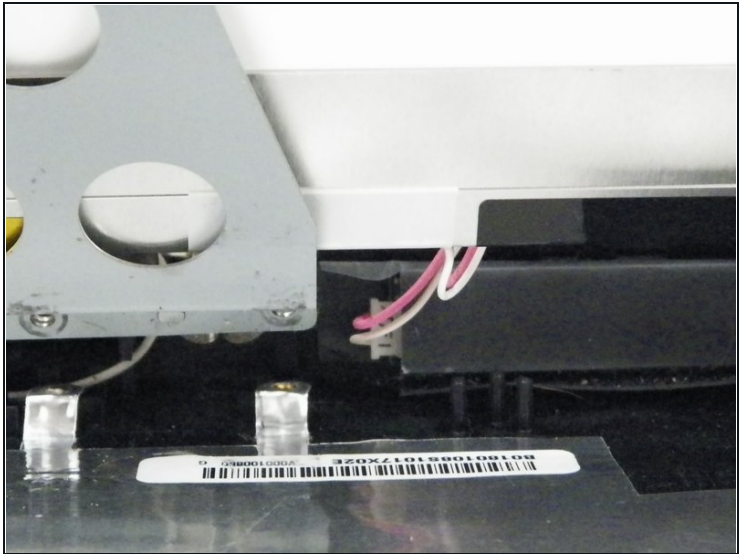
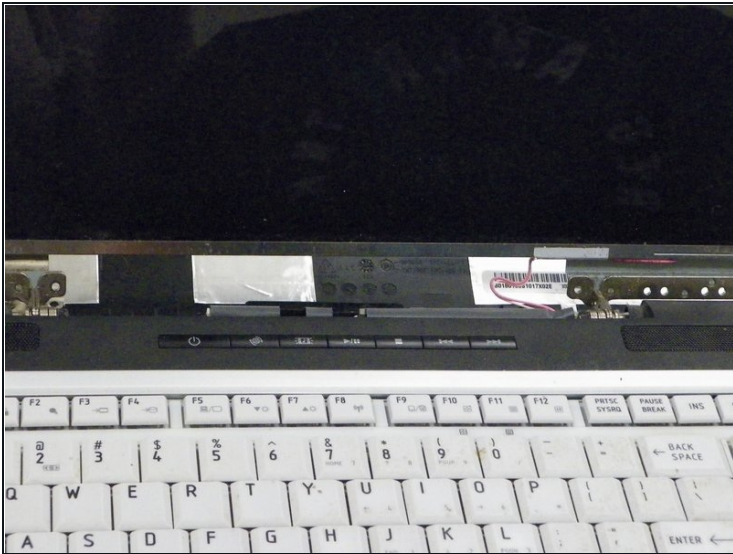
- Return device to upright position and gently pull frame away from screen.

Step 9



- Remove **2** Phillips 5.6 mm screws from below screen.

Step 10



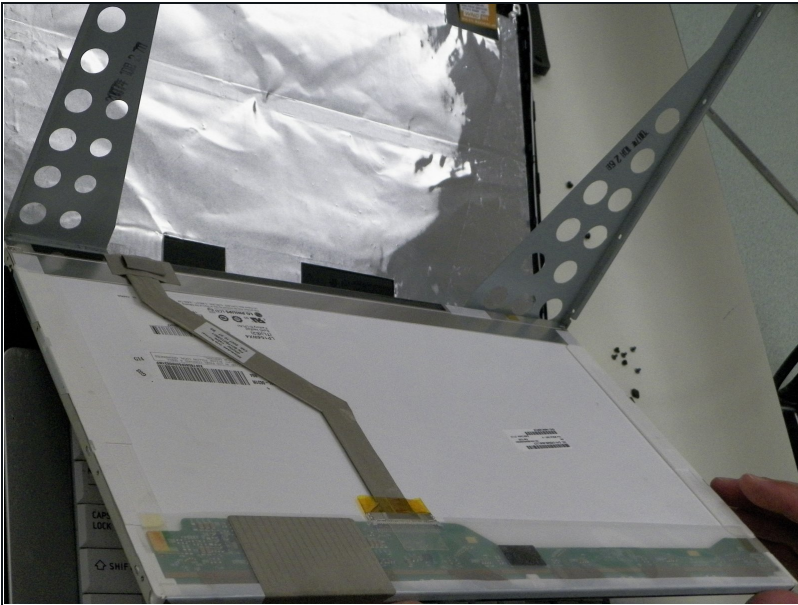
- Unplug pink and white monitor cable from bottom of screen.

Step 11



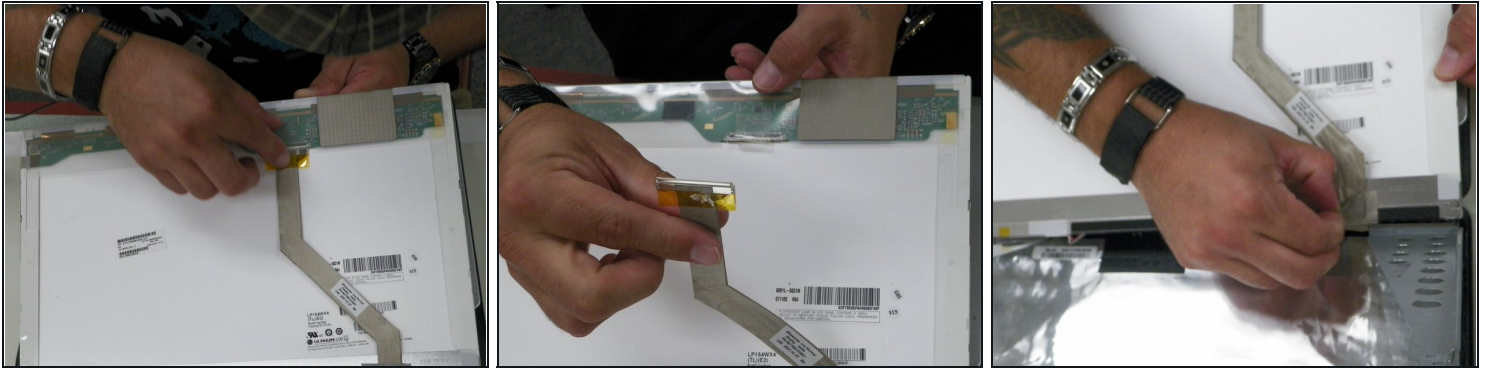
- Remove **3** Phillips 3.2 mm screws from each side of the metal case around screen.

Step 12



- Pull the screen forward from the top out of the metal frame enough to see the back of the screen.

Step 13



- Hold the screen with one hand and gently remove the display cable from the back side of the screen.
- ① The display cable is typically glued or taped to the back of the screen. Take care to carefully lift the tape and slowly pull cable.
- ⚠ To avoid damaging screen ribbon cable, use caution and be gentle. Do not yank or remove with force. Avoid bending the ribbon cable which can cause the wires inside it to snap and break.

To reassemble your device, follow these instructions in reverse order.