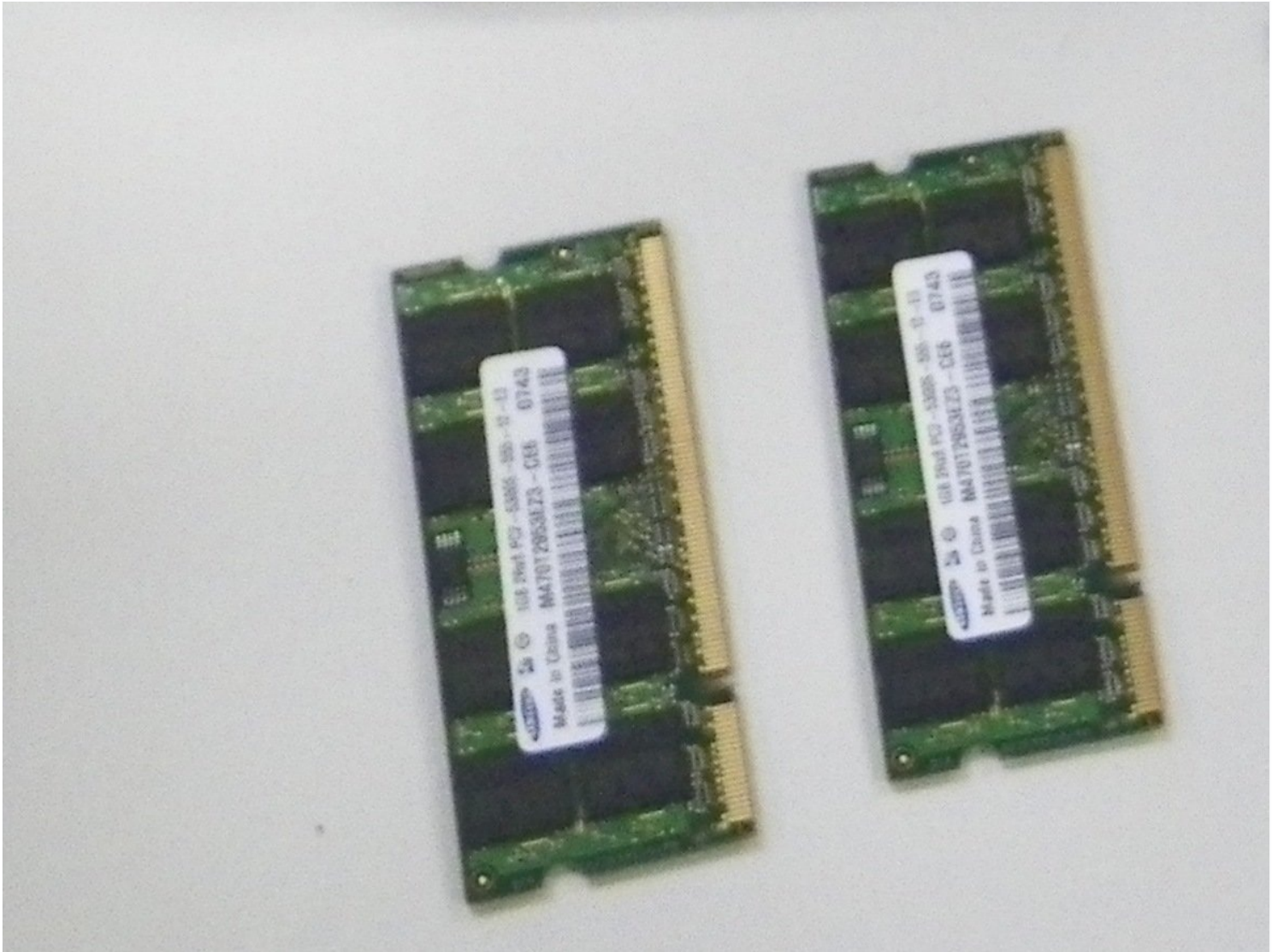




Toshiba Satellite A215-S7425 RAM Replacement

Written By: Marianne

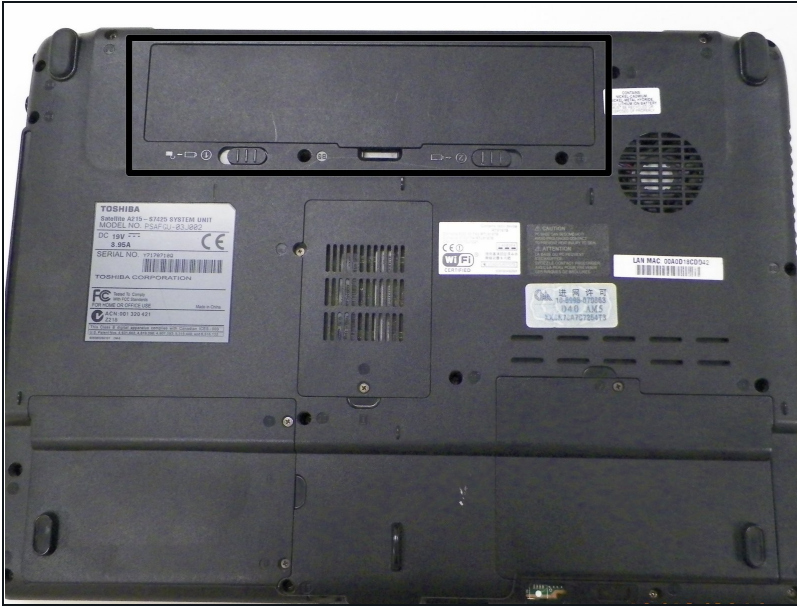


TOOLS:

Phillips #1 Screwdriver (1)

Anti-Static Wrist Strap (1)

Step 1 — Battery

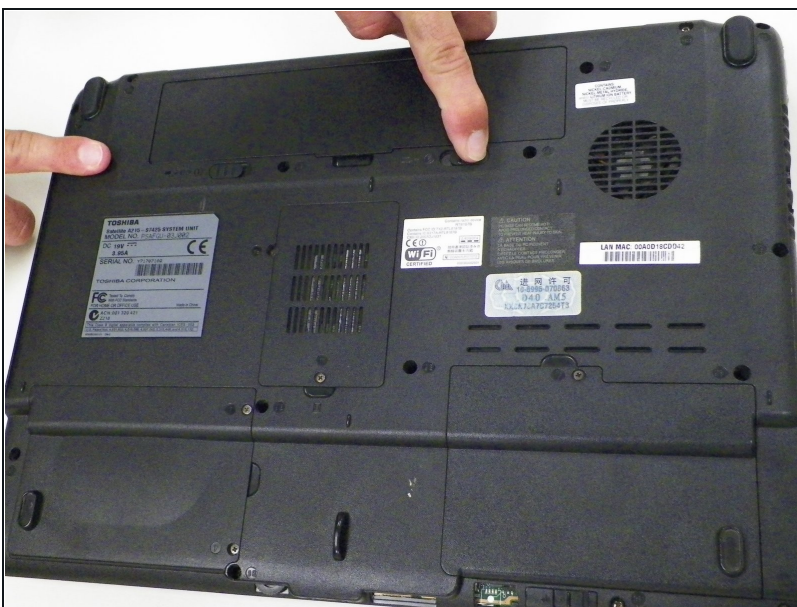



- Turn off the computer.
- Disconnect the charging cable from computer.

 **Failure to unplug the cable could result in electric shock.**

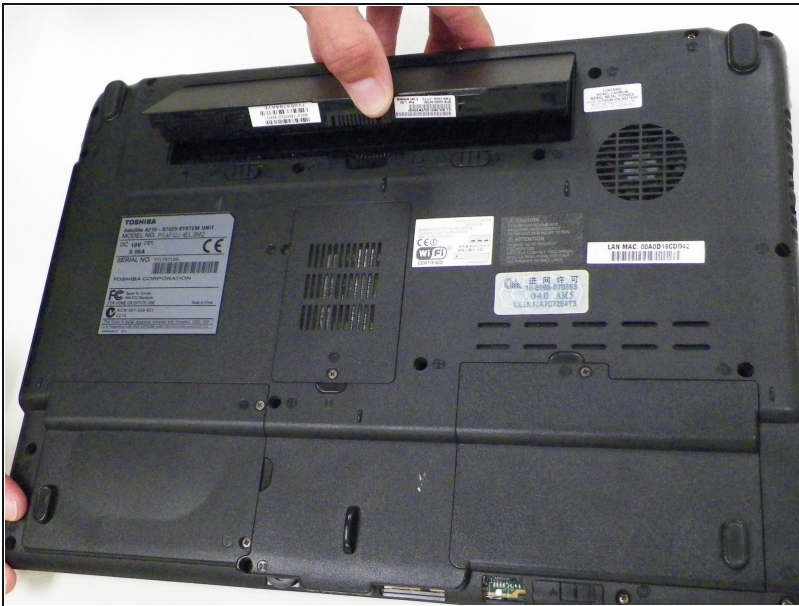
- Flip the computer upside down.

Step 2



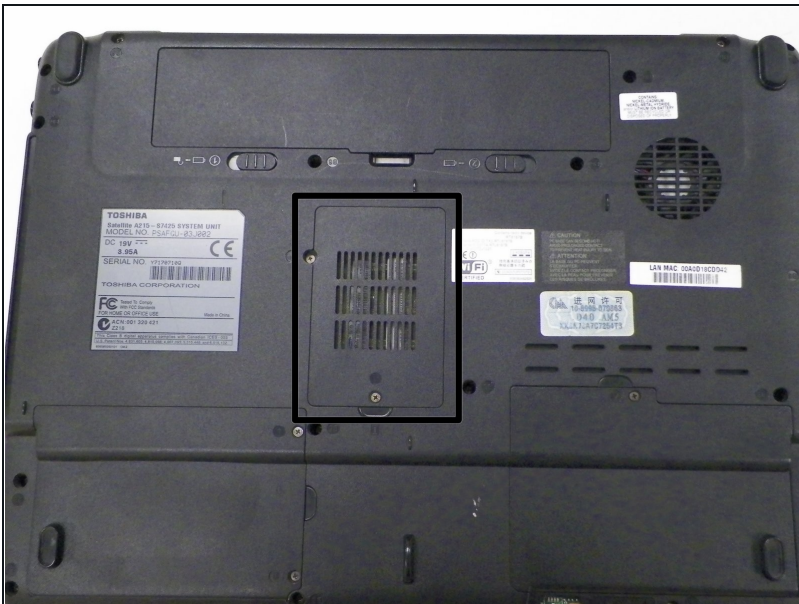
- Slide latches labeled #1 and #2, located outside the battery cover, away from each other.
-  Latch #1 will click over and stay while latch #2 will have to be held for battery to release.

Step 3



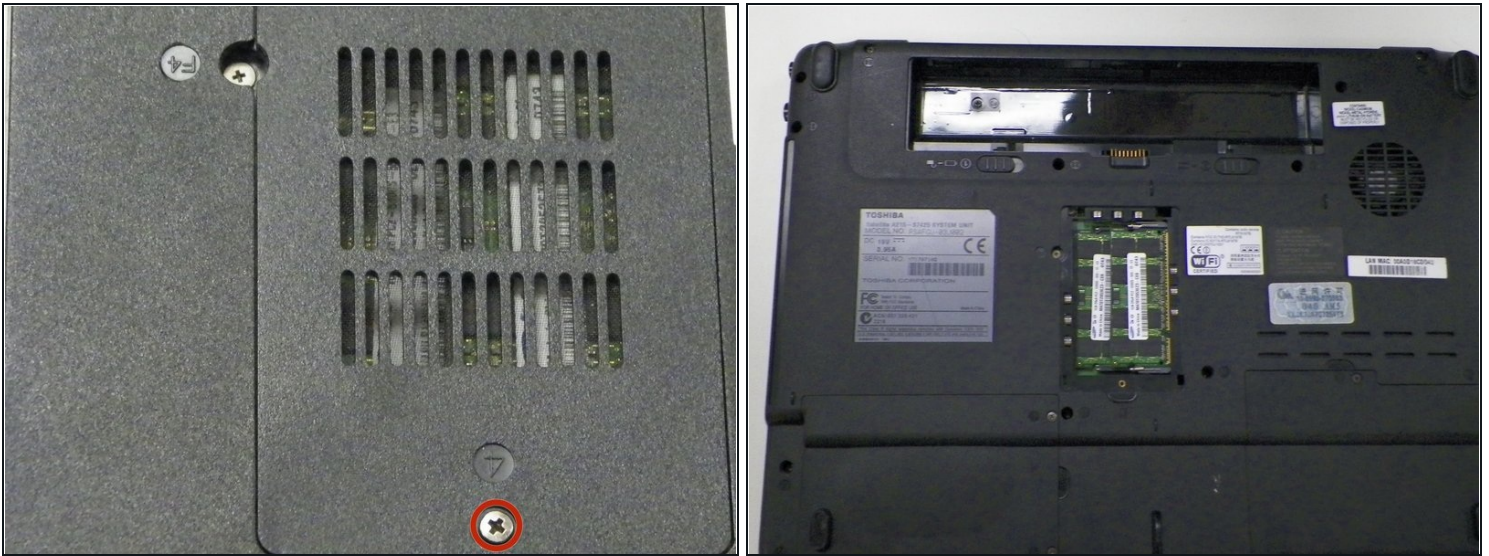
- Gently lift and pull the battery out of the device.

Step 4 — RAM



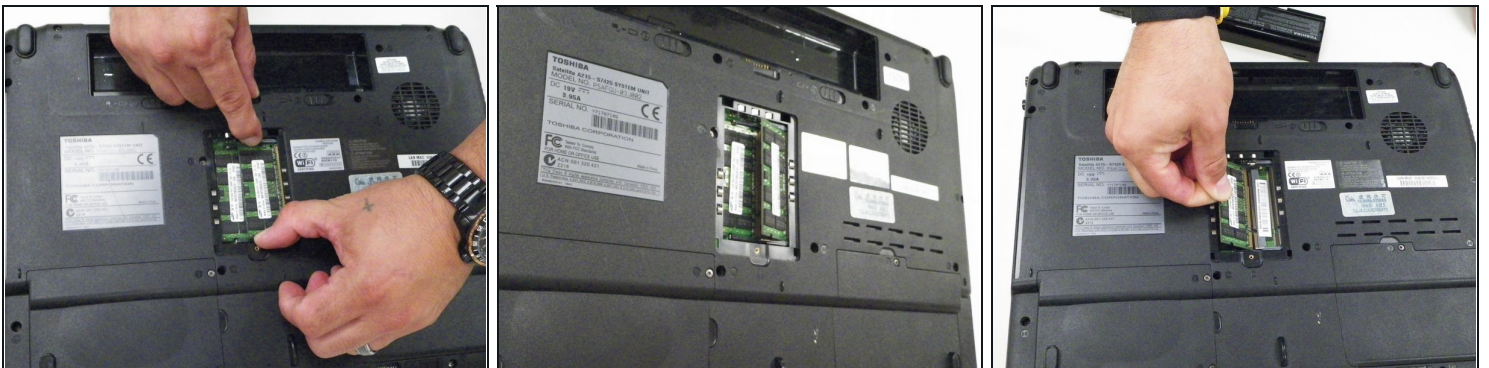
- Locate the RAM vented plastic cover in the center of the device.

Step 5



- Loosen 1 Phillips 4.2 mm size captive screw and lift cover off device to expose 2 RAM sticks.

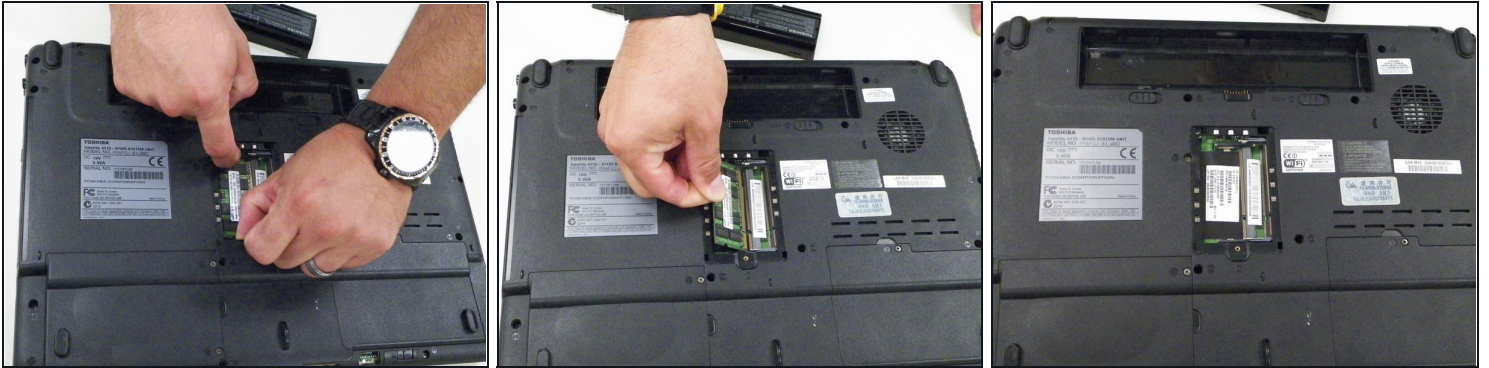
Step 6



- Locate 2 metal pinchers on either side of the 1st RAM stick.
- Use a finger from each hand to push the 2 pinchers simultaneously away from the stick of RAM and towards the exterior of the case.
- The RAM stick will automatically rise up. Gently pull out the RAM stick with one hand.

⚠ The use of a [anti-static wrist strap](#) while working with the RAM is advise to prevent electrostatic discharge(ESD) from damaging the RAM.

Step 7



- To remove the 2nd RAM stick, repeat previous steps.
 - ① You will be unable to remove 2nd RAM stick if the first one is not removed first.
-

To reassemble your device, follow these instructions in reverse order.