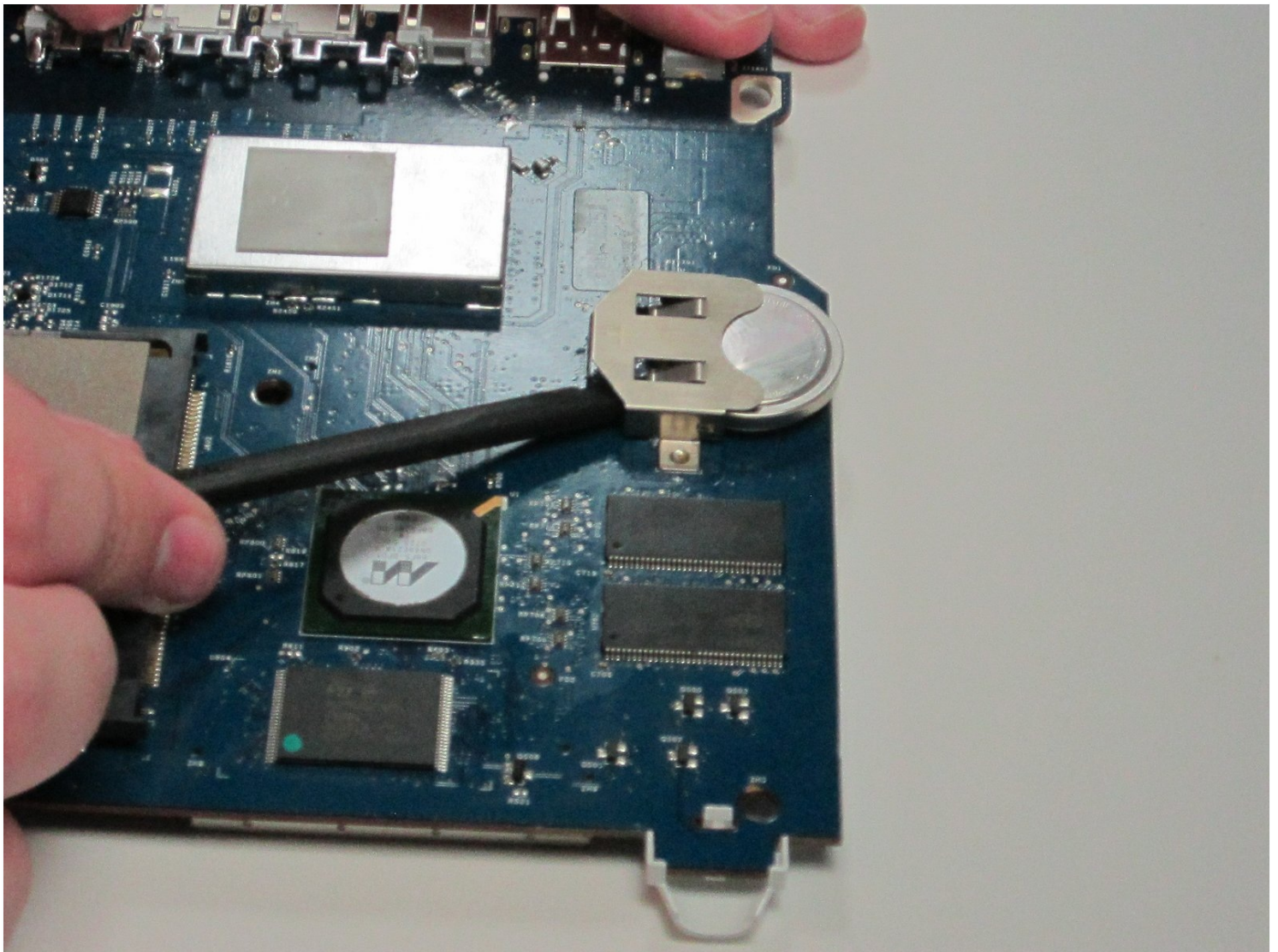




Apple AirPort Extreme Model A1143 Battery Replacement

At some point the internal battery may run out...

Written By: Zak



INTRODUCTION

At some point the internal battery may run out of energy and need to be replaced, this guide is here to help you do this. This process and is quite simple and straight forward with the right tools. A 3V CR2450HR battery will be needed before starting.

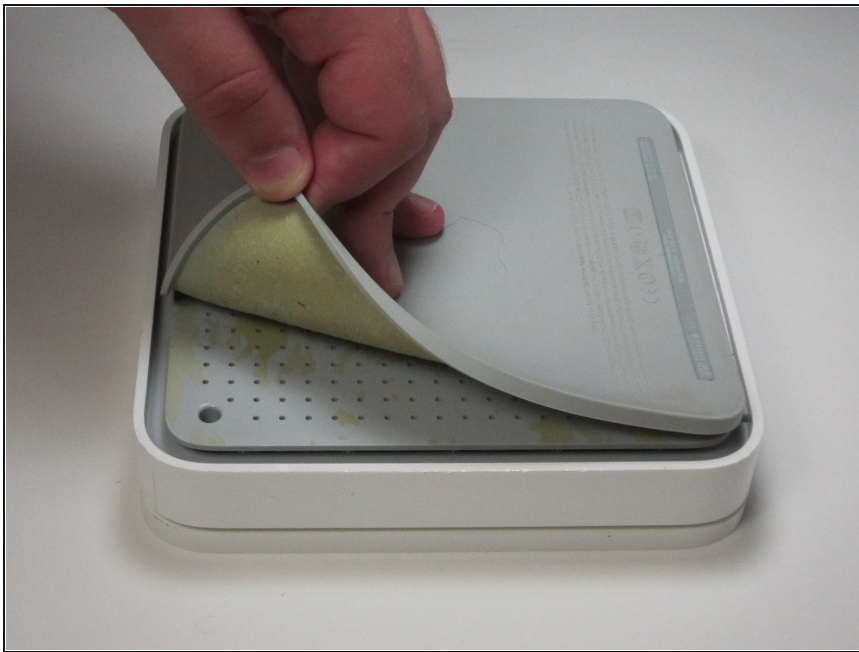
TOOLS:


Phillips #00 Screwdriver (1)
iFixit Opening Tool (1)

PARTS:

3V CR2450HR Battery (1)

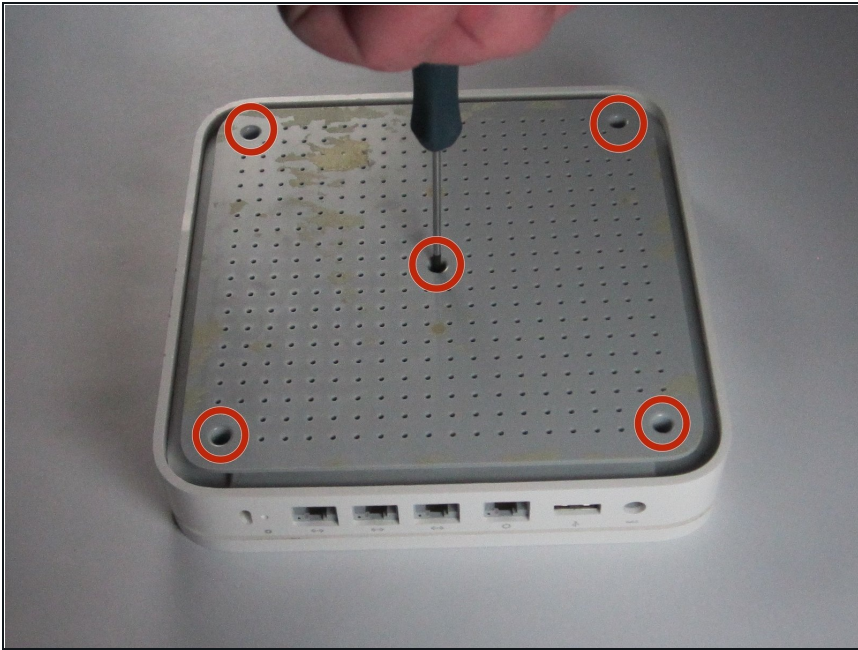
Step 1 — Back Pad



 The back pad is held in with glue so use caution when removing to prevent tearing. Low heat may be used to help remove the pad.

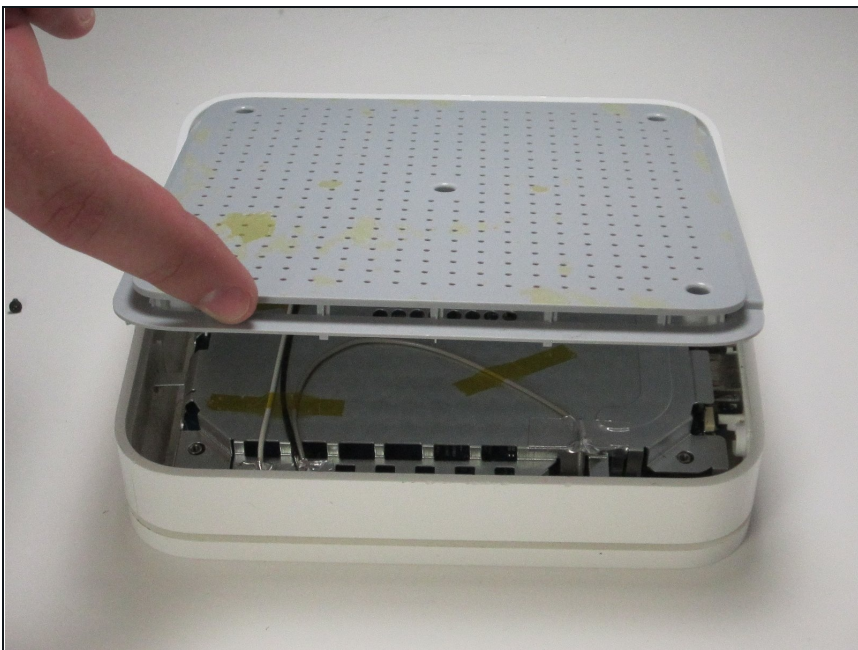
- Slowly peel off the rubber pad on the bottom of the device. Start from one corner and peel with your fingers. Use heat if necessary until pad is completely removed.

Step 2 — Back Cover



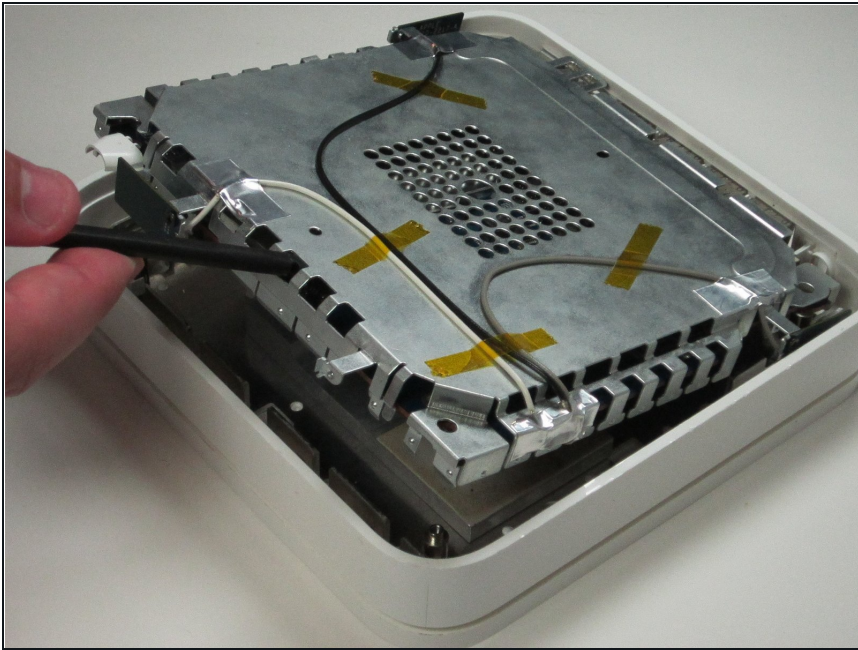
- After removing the rubber pad, unscrew the five 5mm phillips #00 screws in the holes of the back cover.

Step 3



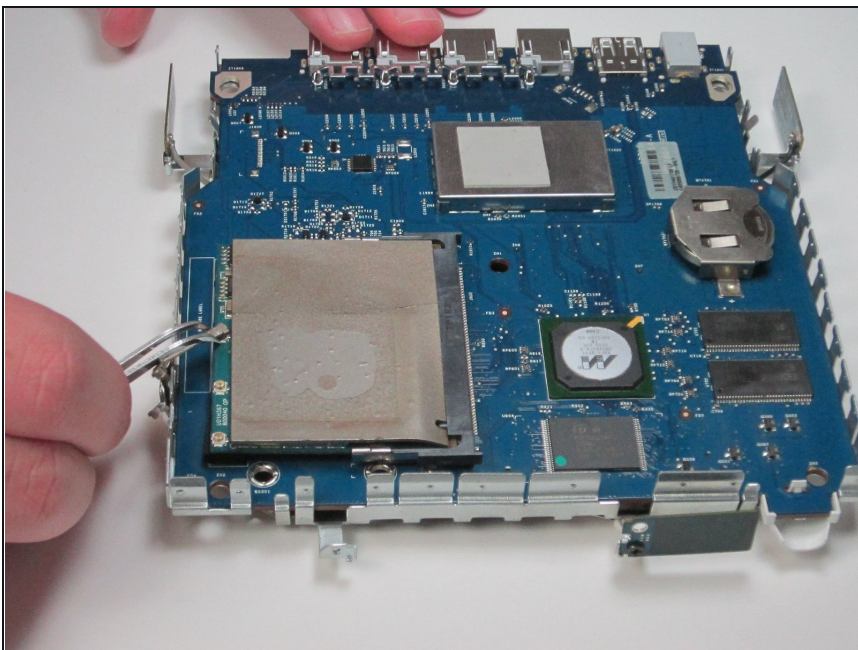
- Lift up the back case from the perforated edge to remove it.

Step 4 — Remove from Case



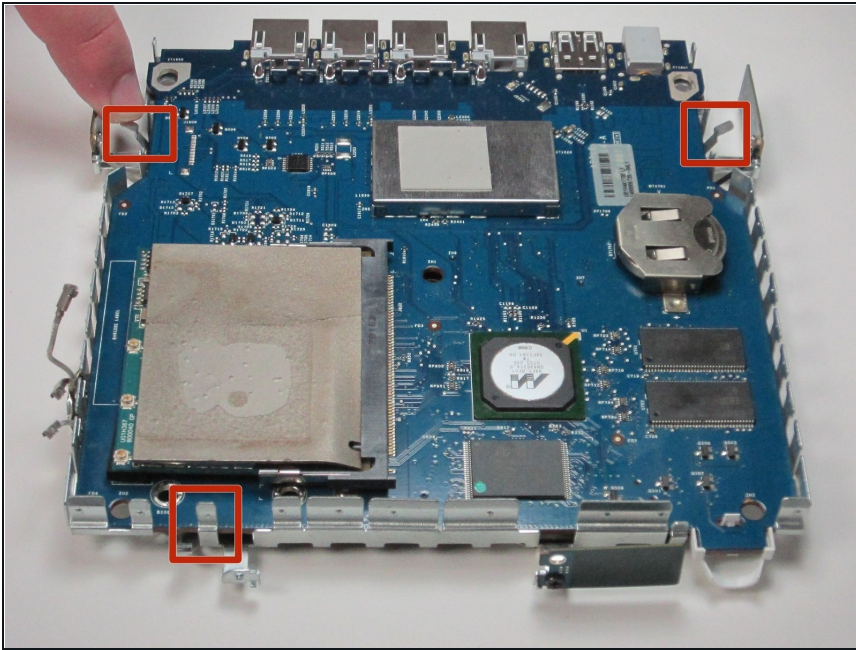
- Remove logic board and metal casing from outer case by prying from one side using a spudger.

Step 5 — Detach Logic Board From Case



- Unhook the wires connecting the logic board to the metal casing by grabbing and pulling up on each connection with [tweezers](#).

Step 6 — Pull Back Tabs



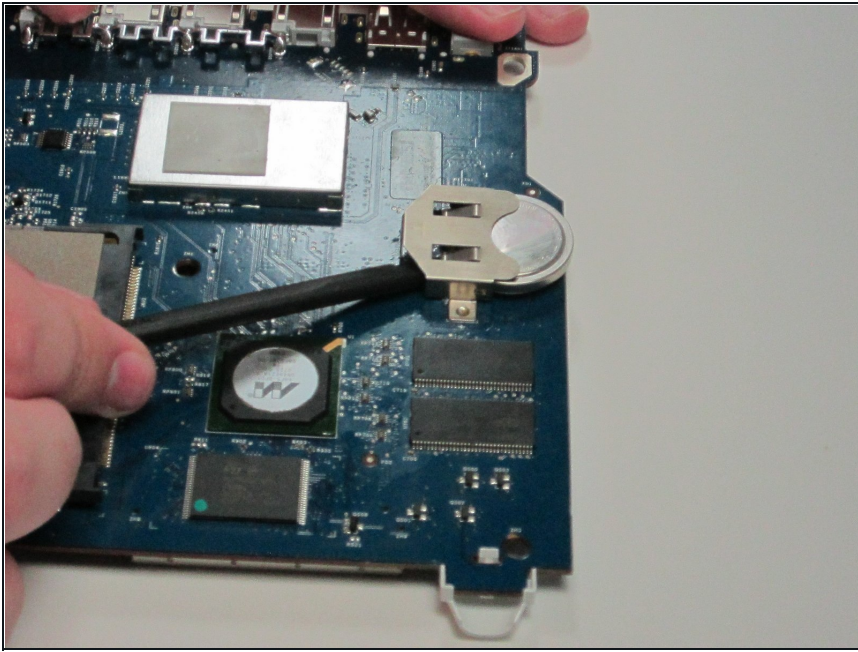
- Carefully push back the three metal tabs with your fingers on the sides of metal case.

Step 7 — Remove Metal case



- Carefully pull the metal case away from the logic board.

Step 8 — Battery



- Gently slide out the battery with a small narrow tool such as a spudger. Insert a new 3V CR2450HR.

To reassemble your device, follow these instructions in reverse order.