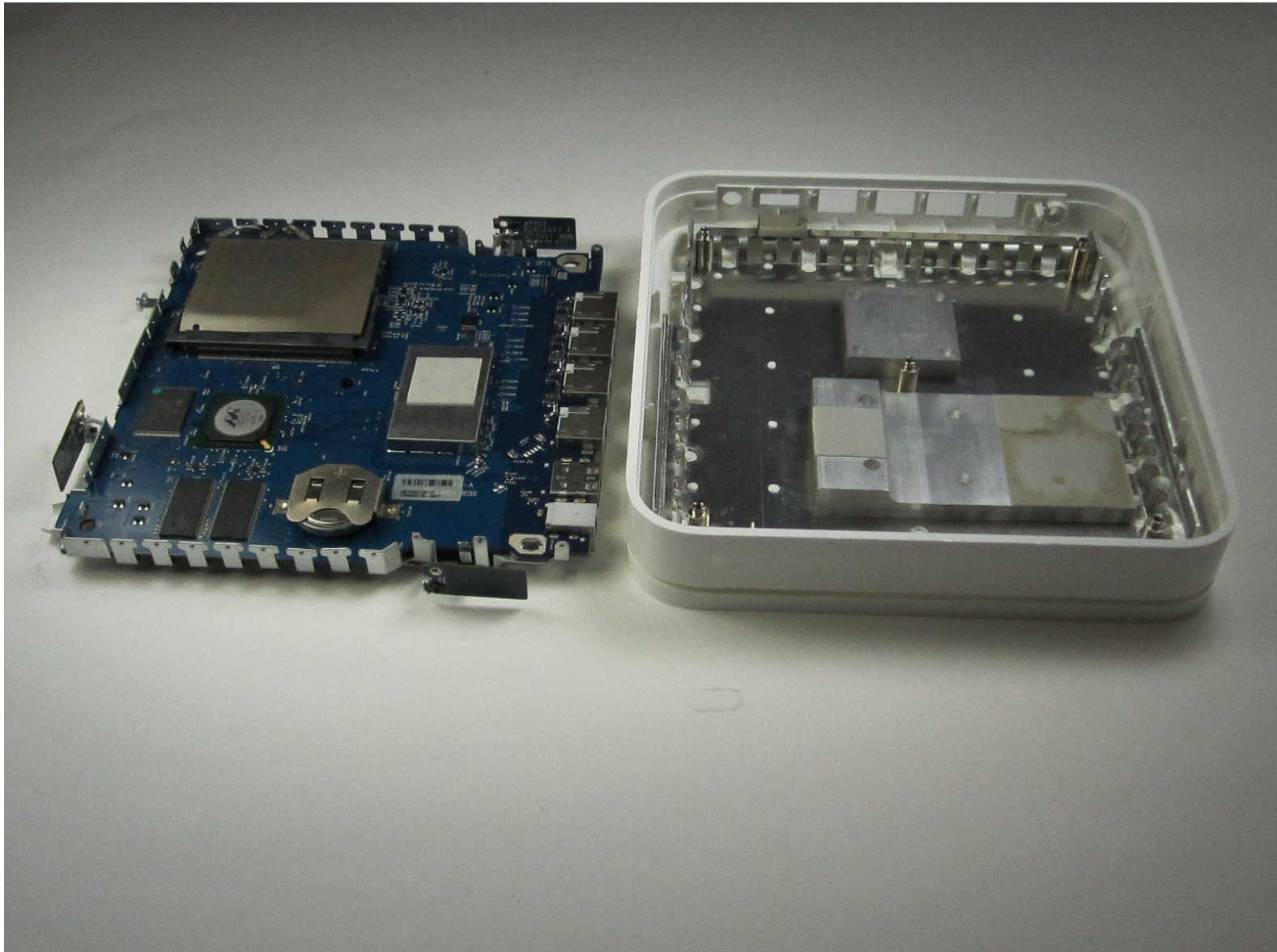




# Apple AirPort Extreme Model A1143 Wi-Fi Card Replacement

This guide will demonstrate how to replace the Wi-Fi card located on the logic board of the device.

Written By: Zak



## INTRODUCTION

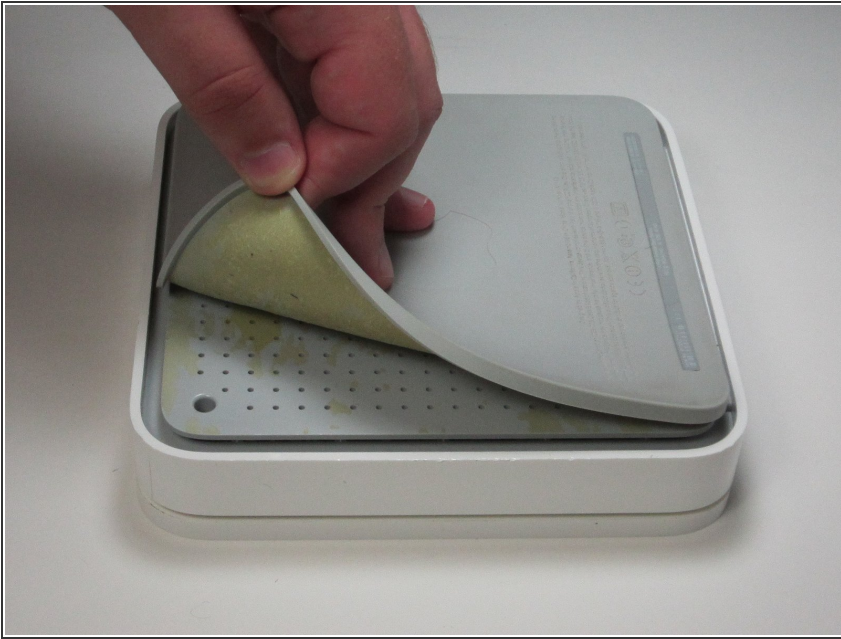
The Wi-Fi card failing in your device would cause the device to power on normally, but not transmit the internet connection to any other devices. Luckily Apple has made this component easily accessible and quick to change.




### TOOLS:

- [Phillips #00 Screwdriver](#) (1)
  - [iFixit Opening Tools](#) (1)
  - [Tweezers](#) (1)
-

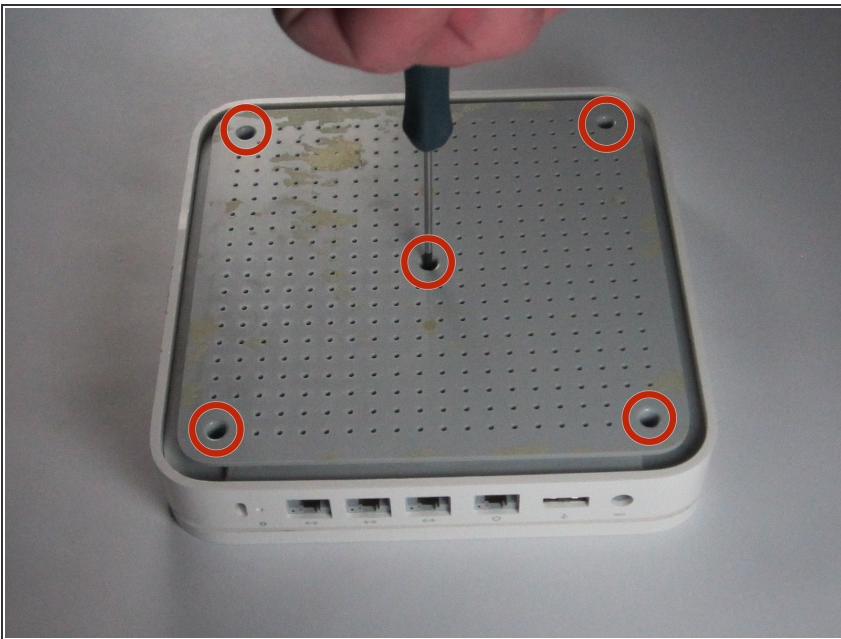
## Step 1 — Back Pad



 The back pad is held in with glue so use caution when removing to prevent tearing. Low heat may be used to help remove the pad.

- Slowly peel off the rubber pad on the bottom of the device. Start from one corner and peel with your fingers. Use heat if necessary until pad is completely removed.

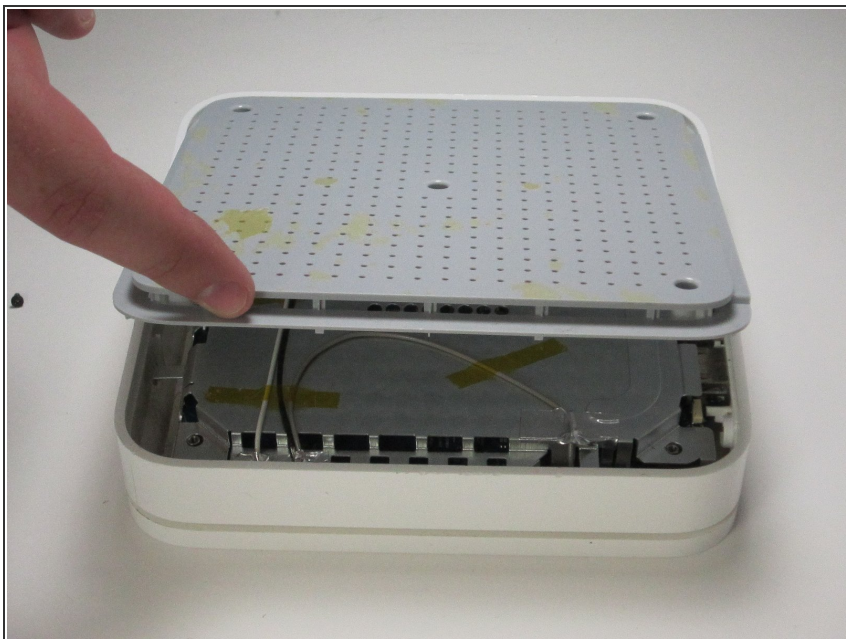
## Step 2 — Back Cover



- After removing the rubber pad, unscrew the five 5mm phillips #00 screws in the holes of the back cover.

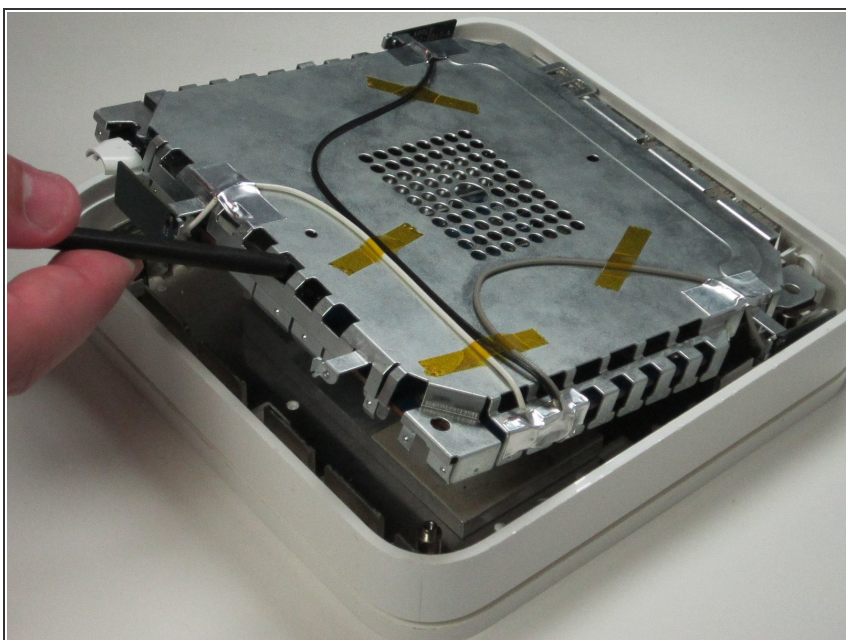


### Step 3



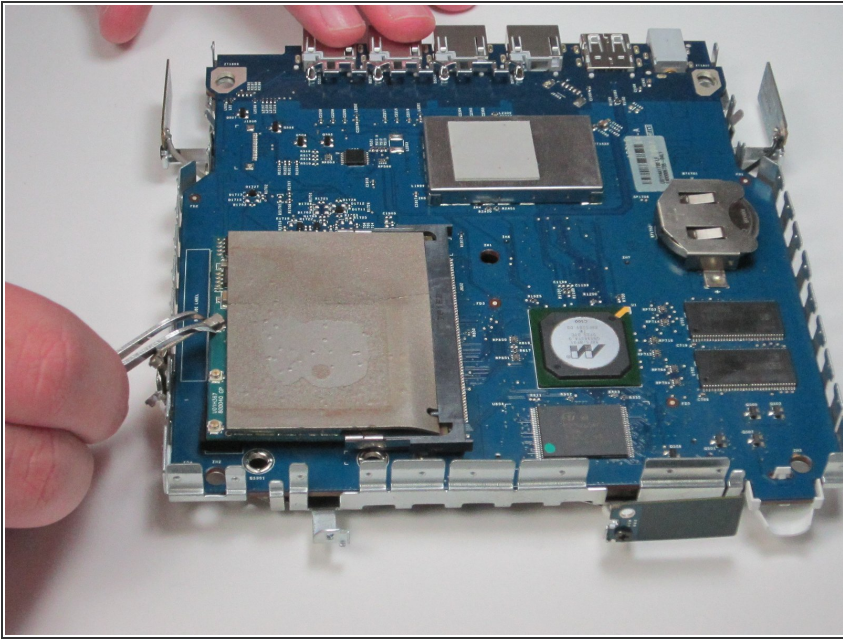
- Lift up the back case from the perforated edge to remove it.

### Step 4 — Remove from Case



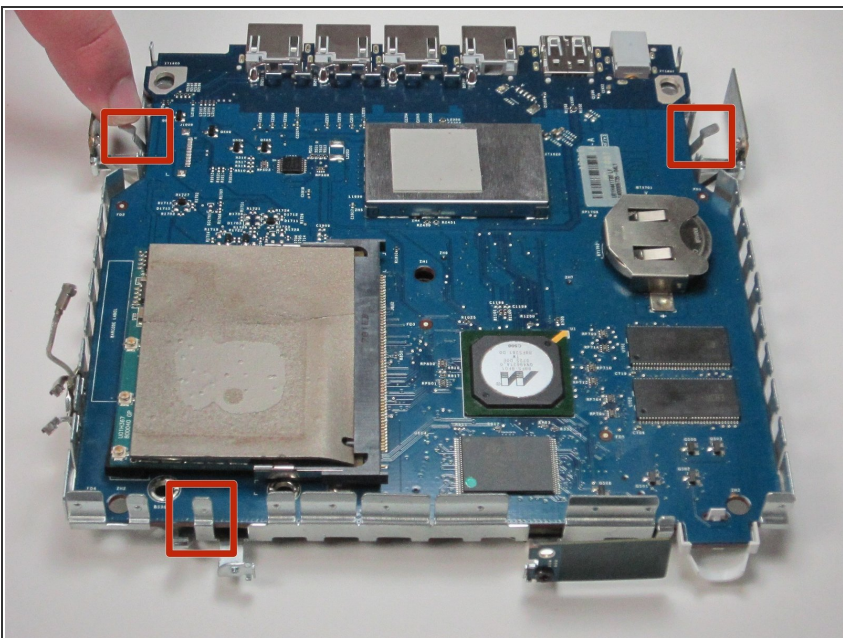
- Remove logic board and metal casing from outer case by prying from one side using a spudger.

## Step 5 — Detach Logic Board From Case



- Unhook the wires connecting the logic board to the metal casing by grabbing and pulling up on each connection with tweezers.

## Step 6 — Pull Back Tabs



- Carefully push back the three metal tabs with your fingers on the sides of metal case.

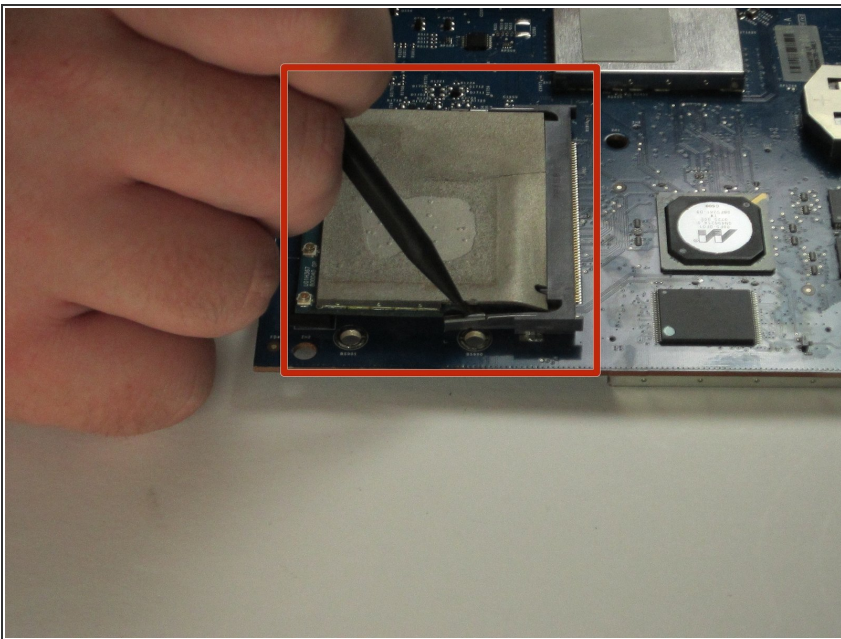


## Step 7 — Remove Metal case



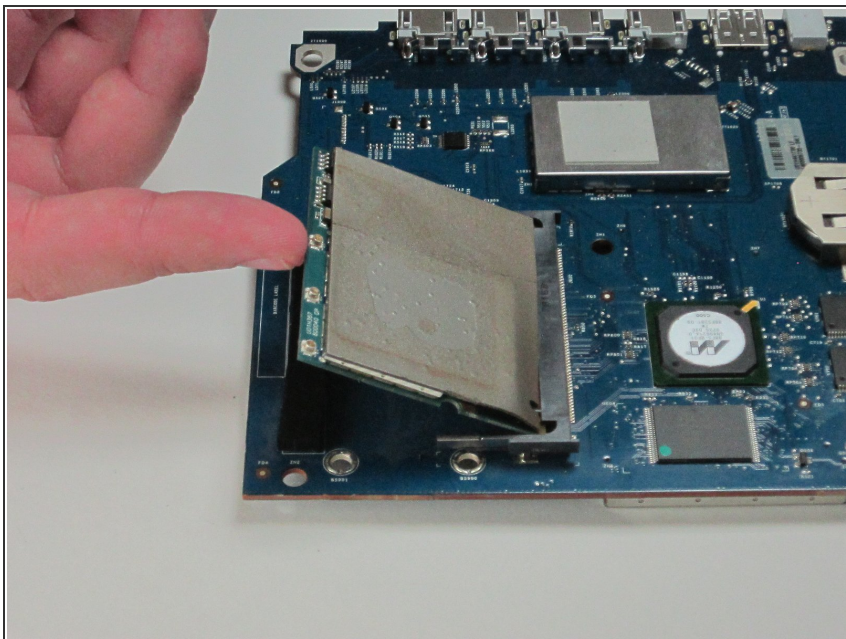
- Carefully pull the metal case away from the logic board.

## Step 8 — Unhooking the WiFi Card



- Locate the WiFi card on the logic board, then use the prying tool to bend back the plastic holding it in place.
- ⚠ Be careful when prying back the plastic piece, it can break if bent too far.

## Step 9 — Removing the WiFi Card



- After holding back the plastic piece keeping the card in place, lift the card up and pull it away from the logic board.

To reassemble your device, follow these instructions in reverse order.