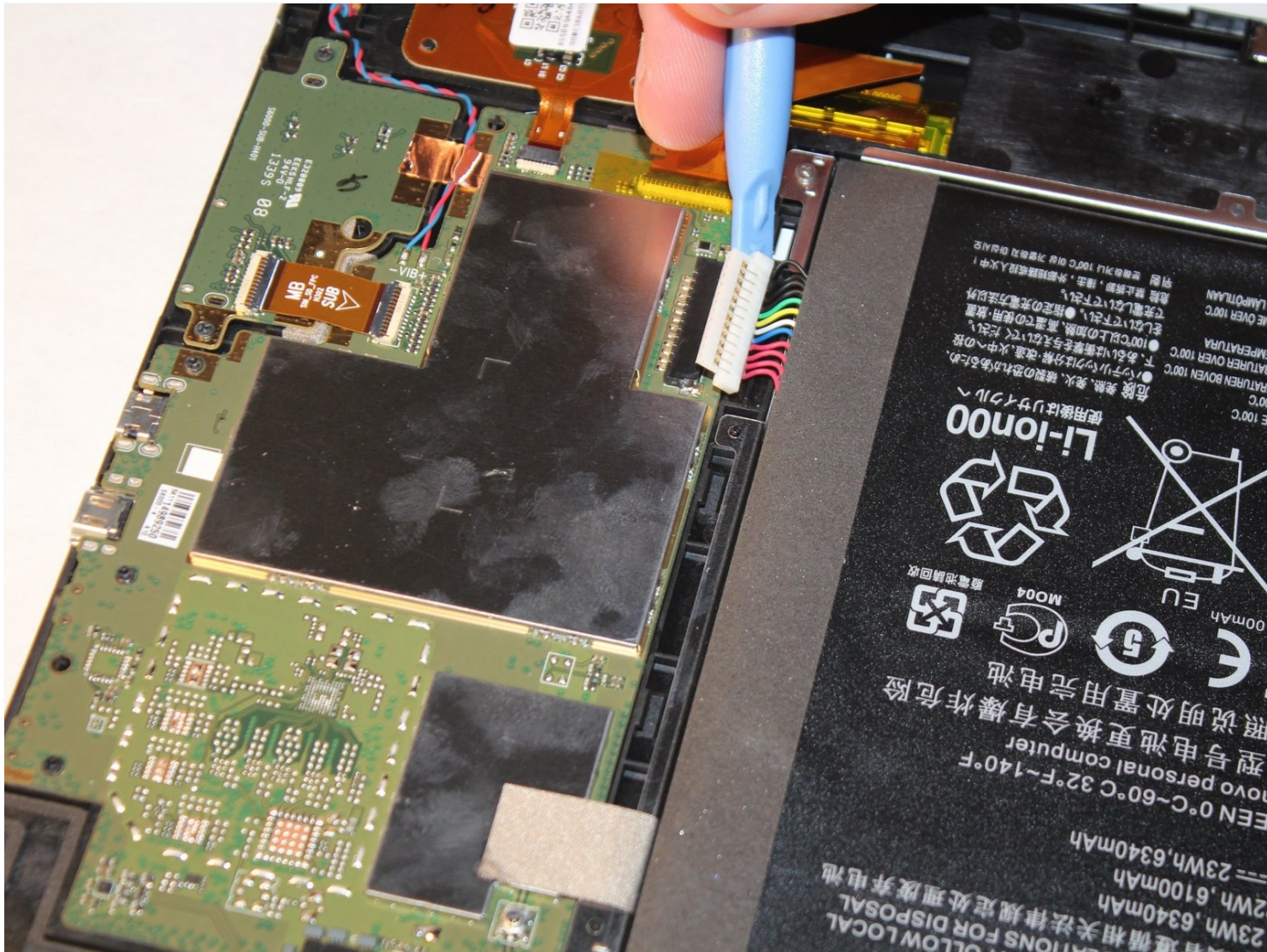




# Lenovo Ideatab S6000 Battery Replacement

## Guide the user in replacing the battery in...

Written By: Josiah Speed



# INTRODUCTION

Guide the user in replacing the battery in order to fix power related problems of the Lenovo Ideatab S6000.

---

## TOOLS:

[Spudger](#) (1)

[Phillips #00 Screwdriver](#) (1)


[iFixit Opening Tool](#) (1)

---

## Step 1 — Battery

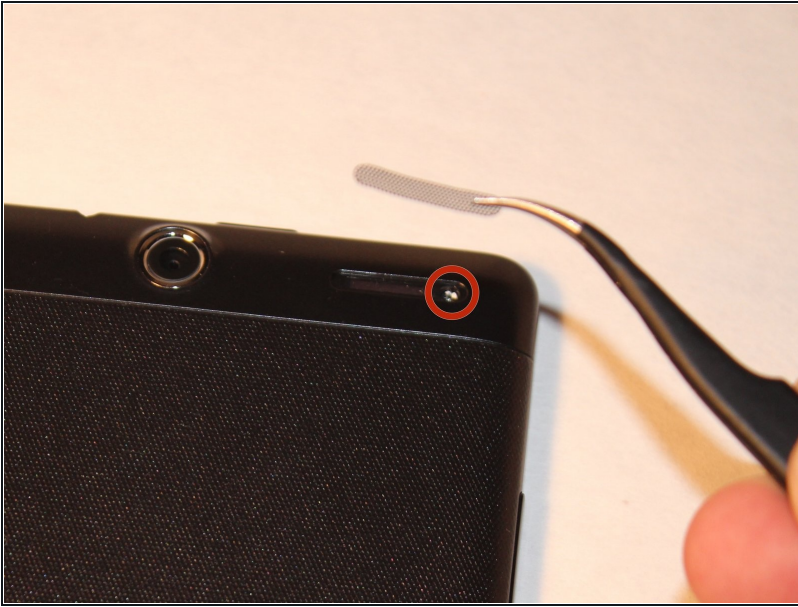


- Remove the speaker screens by working them loose with a plastic opening tool. You may need to first loosen them with [tweezers](#) or a craft knife.

 These screens are held in place by glue that is hard to remove. Please take your time to ensure that that this step is done correctly.



## Step 2



- Remove the screws from both of the spots that were covered.

## Step 3



**⚠ DO NOT USE A METAL TOOL FOR THIS.**

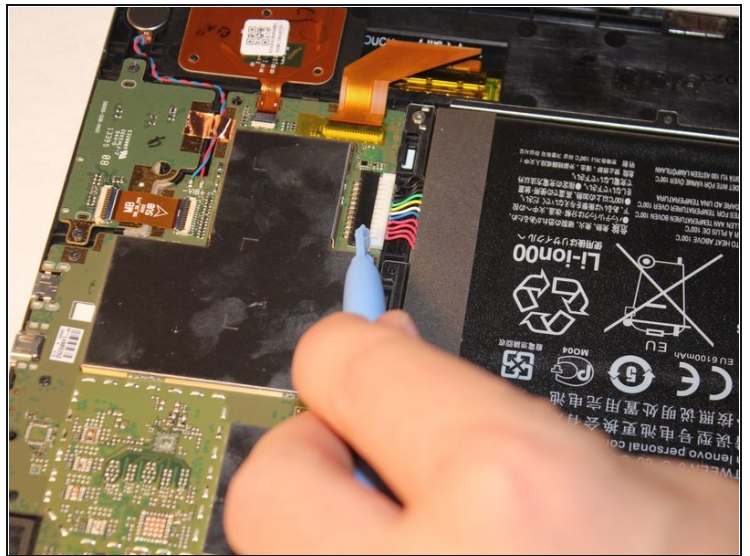
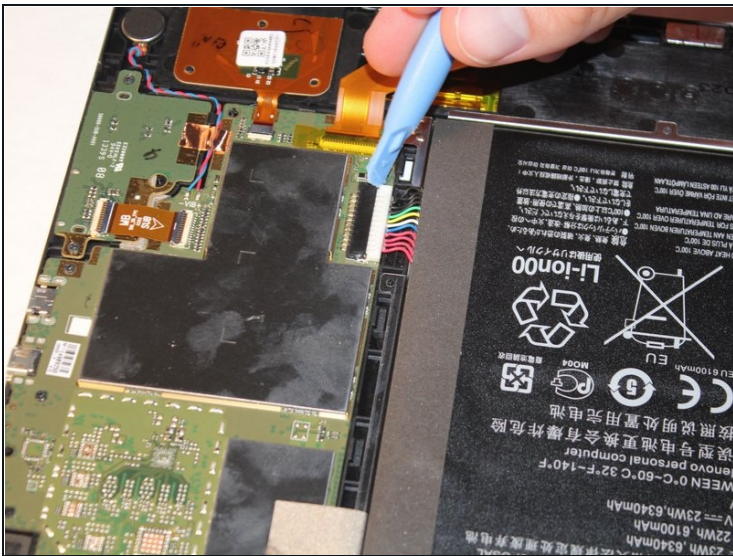
- Go all around the casing, prying the screen away from the backing with the spudger.
- It will make a popping sound each time one of the lock tabs is disconnected.
- ① Take your time as you move all around the device when prying the backing off.

## Step 4



- Pull off the plastic that is covering the battery cable.

## Step 5



- Using either the plastic opening tool or your fingers, gently pull on both sides of the plug to release it.

## Step 6



- Remove the battery by grabbing the tab shown and pulling up.
- The battery is held to the device by adhesive. Pull the battery up from the tab and it will lift out with a bit of effort.

To reassemble your device, follow these instructions in reverse order.