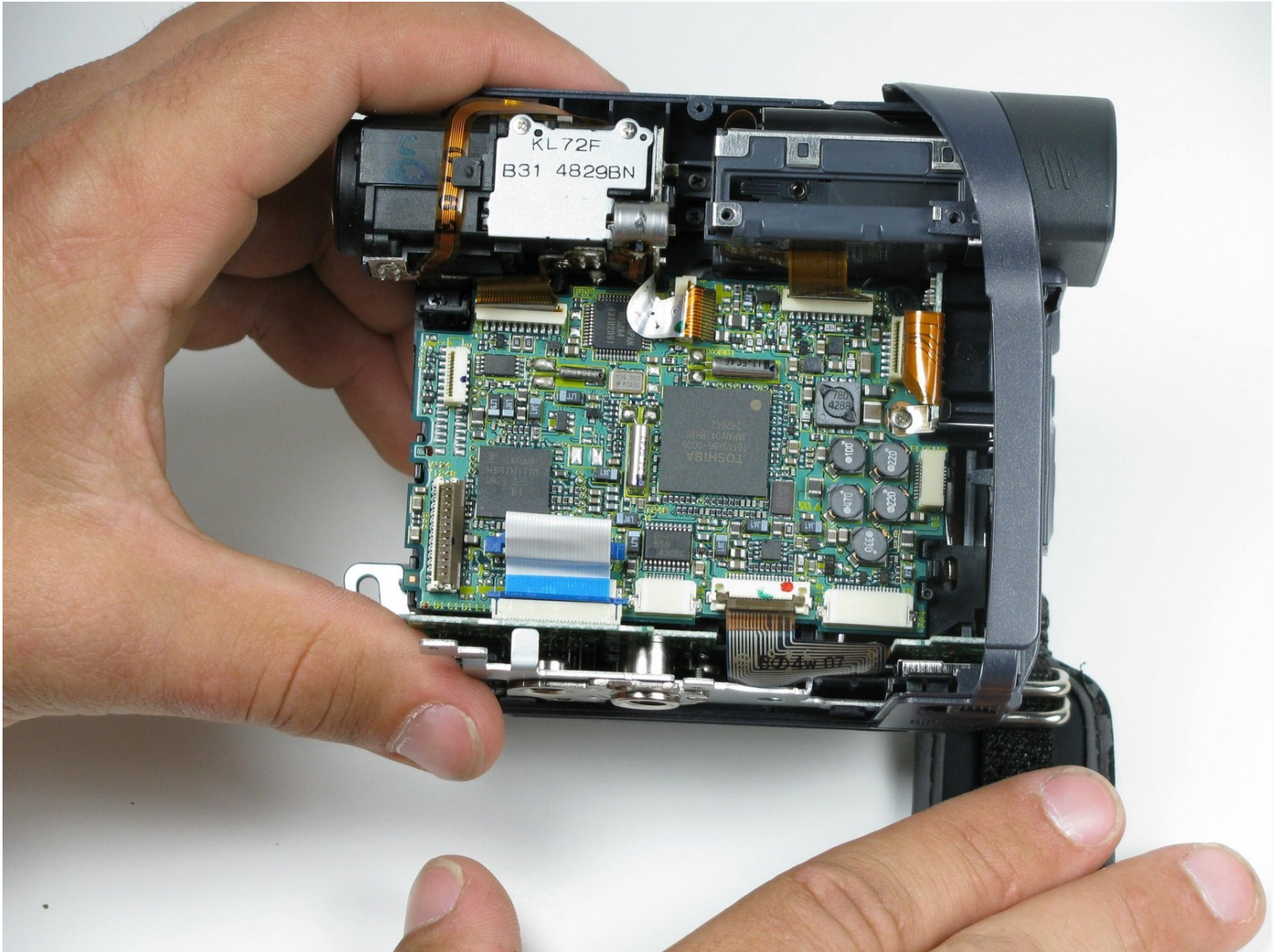




Panasonic PV-GS9 Logic Board Replacement

Remove all necessary parts of the camcorder in...

Written By: Tommy



INTRODUCTION

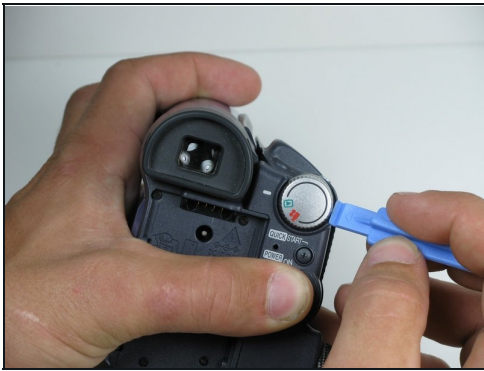
Remove all necessary parts of the camcorder in order to gain access to remove and replace a bad logic board.

TOOLS:

[Phillips #00 Screwdriver](#) (1)

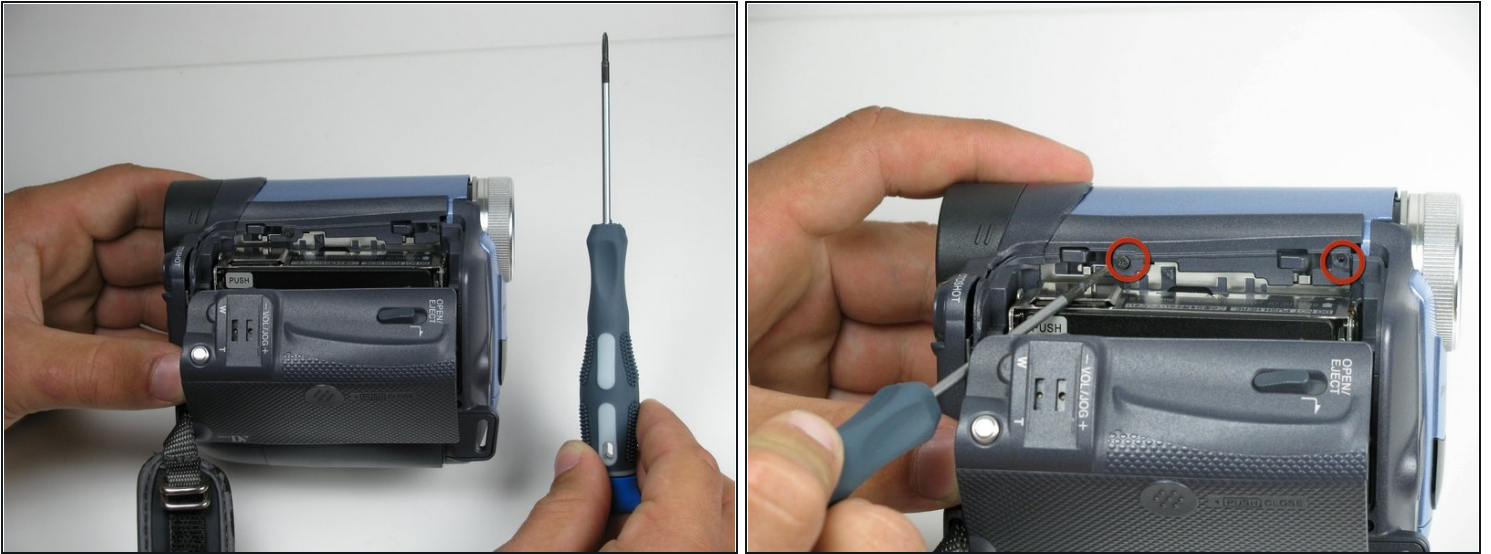
[iFixit Opening Tool](#) (1)

Step 1 — Microphone Replacement



- Locate the blue plastic tool opener, then remove both the round record/playback and record/power control knobs by prying it open from the camcorder.

Step 2



- Open the tape compartment.
- Then flip the camcorder and locate two 4.5mm screws that are horizontal from each other and about 2 inches apart using a #00 Phillips screwdriver.

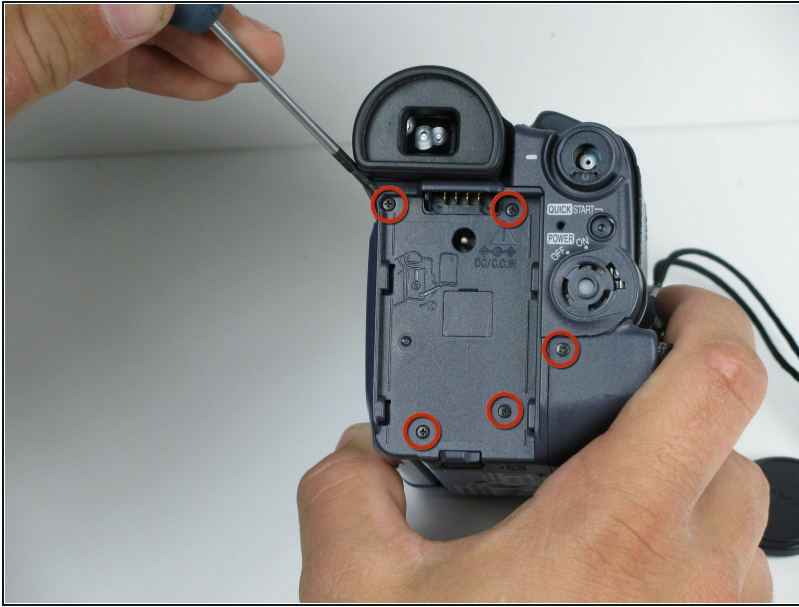
Step 3



- Use the blue plastic opening tool to remove the gray trim piece by prying it from top of the camcorder.

⚠ Be gentle when removing the trim piece. The plastic parts are fragile and can break easily.

Step 4



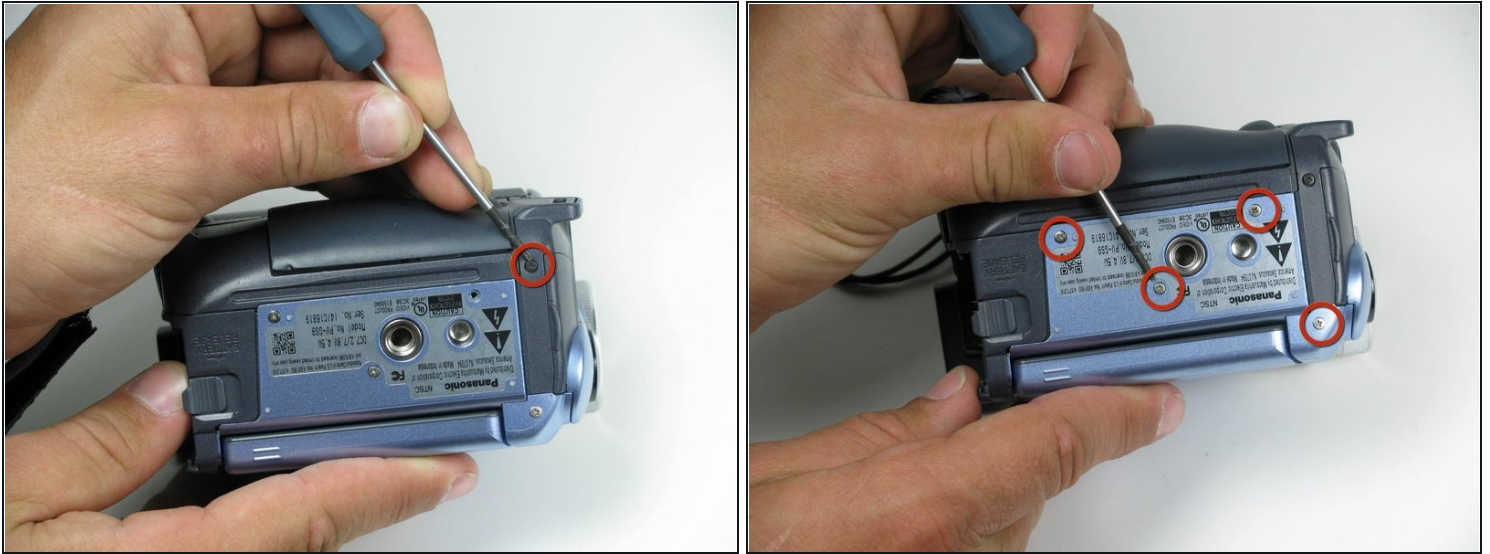
- Rotate the camcorder so that the eye piece is facing you.
 - Remove the four black 4.5mm screws, sitting behind the battery.
 - Remove the 5th screw to the right of the battery dock.
 - Remove the battery by gently pulling away from the camcorder.
- ⓘ Be careful and place screws together so you don't lose any.

Step 5



- Rotate the camcorder so that the tape compartment is facing you.
- Remove the single 4.5mm black screw above the hook for the hand strap.
 - ① Undoing the strap on one end may help.
- Rotate the camcorder so that the lens is facing you.
- Remove the single 4.5mm black screw from the front panel.

Step 6



- Rotate the camcorder so that the bottom is facing towards you.
- Remove the single remaining 4.5mm black screw from the bottom.
- Remove the four silver 4.5mm screws from the body.

Step 7



- Open the LCD screen on the side of the camcorder.
- Using a #00 screwdriver, remove the two 4.5mm silver screws located on either side of the hinge of the LCD screen.

Step 8

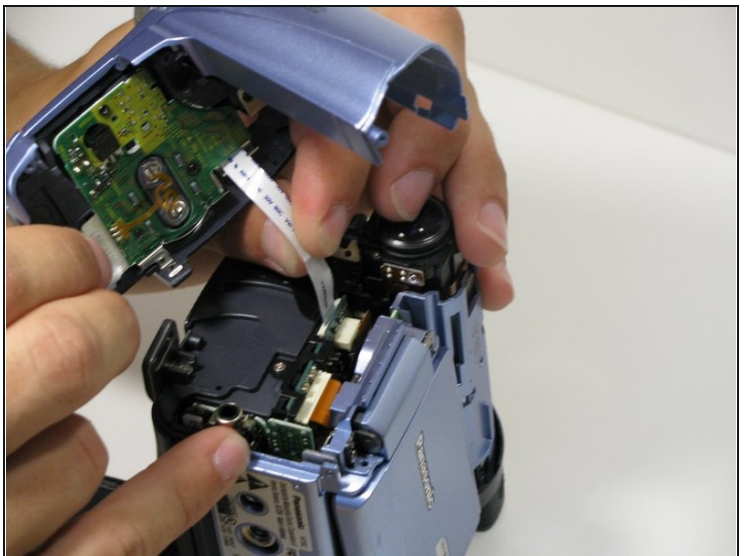
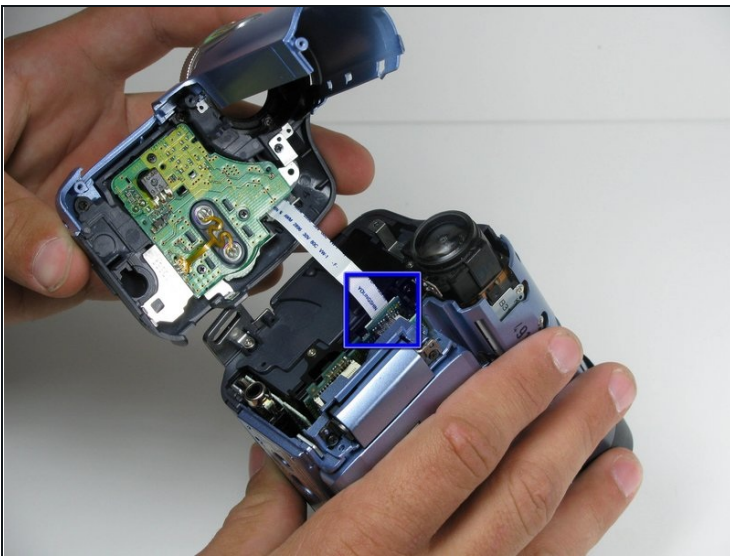


① Carefully remove the front cover from the body of the camcorder.

- This should come apart with relative ease, however a plastic opening tool may help remove the panel.

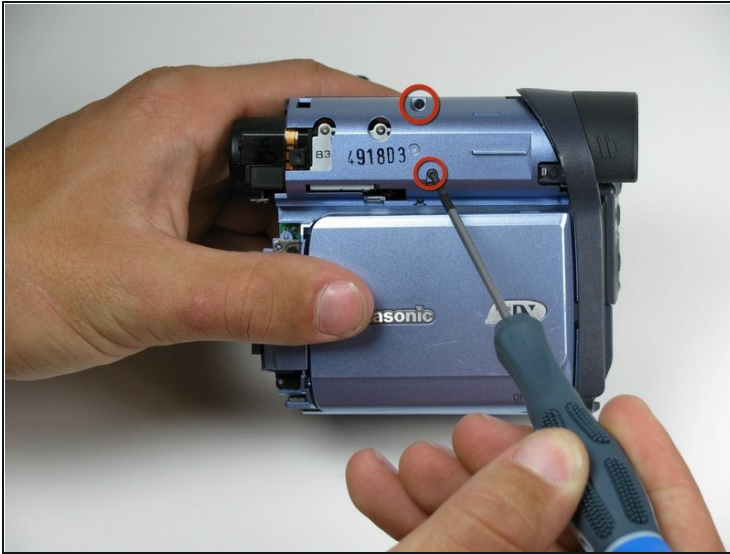
⚠ There is a ribbon cable attached to the front panel and the camcorder body, DO NOT pull that off when you remove this panel.

Step 9



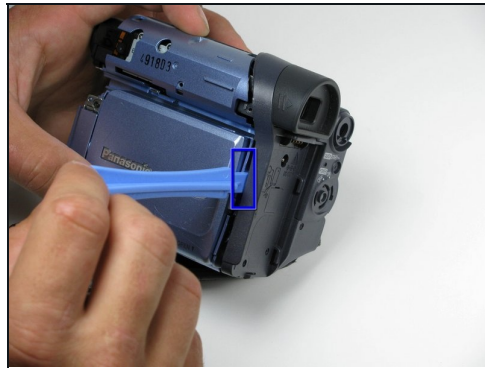
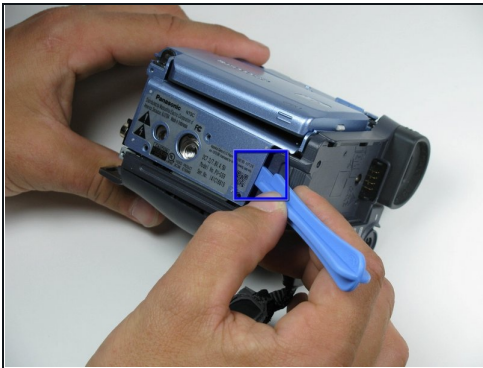
- Using your fingers, carefully pull the ribbon cable away from the logic board.

Step 10 — LCD Panel Removal



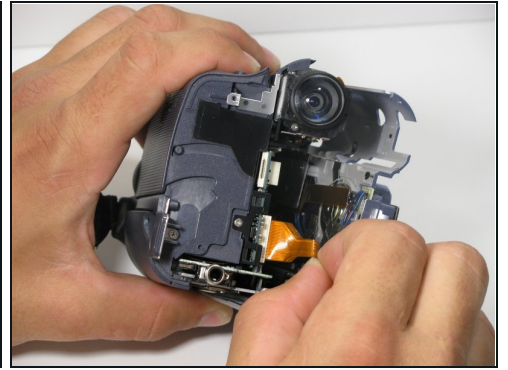
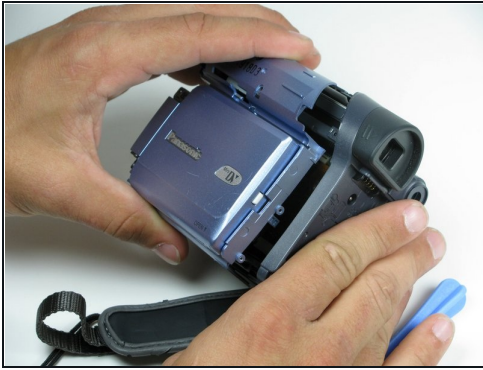
- Remove the indicated 4.5mm screws from the LCD side of the camera.

Step 11



- Place a plastic opening tool under the bottom of the blue panel beneath the camcorder.
 - Using two tools may be useful, if difficult.
- Move the plastic opening tool up the side of the camcorder as shown. Carefully separate the LCD panel from the rest of the camcorder.
- Remove the panel from the camcorder.

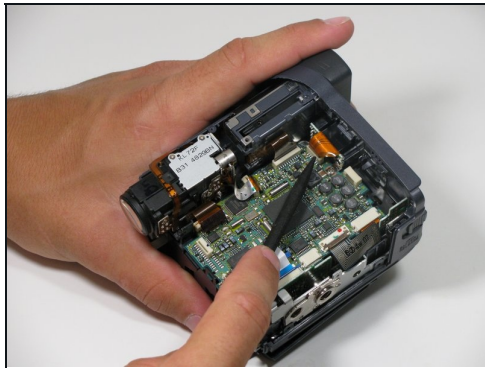
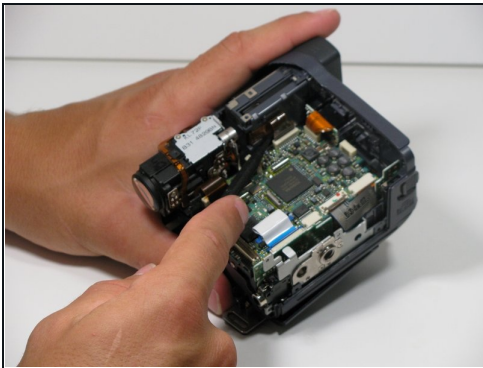
Step 12



⚠ Before removing the LCD panel from the camcorder, disconnect the ribbon cables joining the LCD panel to the logic board.

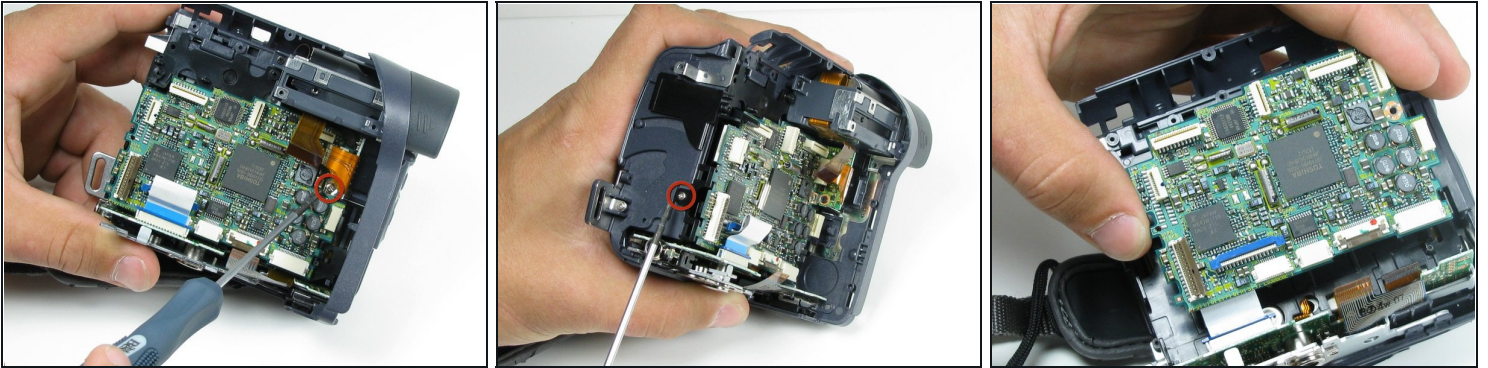
- There may be multiple ribbon cables attached to the same point on the logic board.

Step 13 — Logic Board



- Using the spudger, remove the few remaining ribbon cables from the logic board.

Step 14



- To remove the logic board from the body, use the #00 phillips head screwdriver and remove the 4mm silver screw from right side of the board.
- Next, rotate the camcorder so the front is facing you and remove the 4mm silver screw from the front panel.
- Carefully lift the logic board away from the camcorder.

To reassemble your device, follow these instructions in reverse order.