



# Dell Inspiron Mini 1012: Keyboard Replacement

This guide will demonstrate how to replace a Dell Inspiron Mini 1012's Keyboard.

Written By: Marie K Bordley





## TOOLS:

- [Metal Spudger](#) (1)
- [Phillips #1 Screwdriver](#) (1)

## Step 1 — Keyboard



- Remove the battery

## Step 2



- Using a Philip's head screwdriver, remove three screws: one directly below the battery and the other two to the right and the left of the two battery lock switches

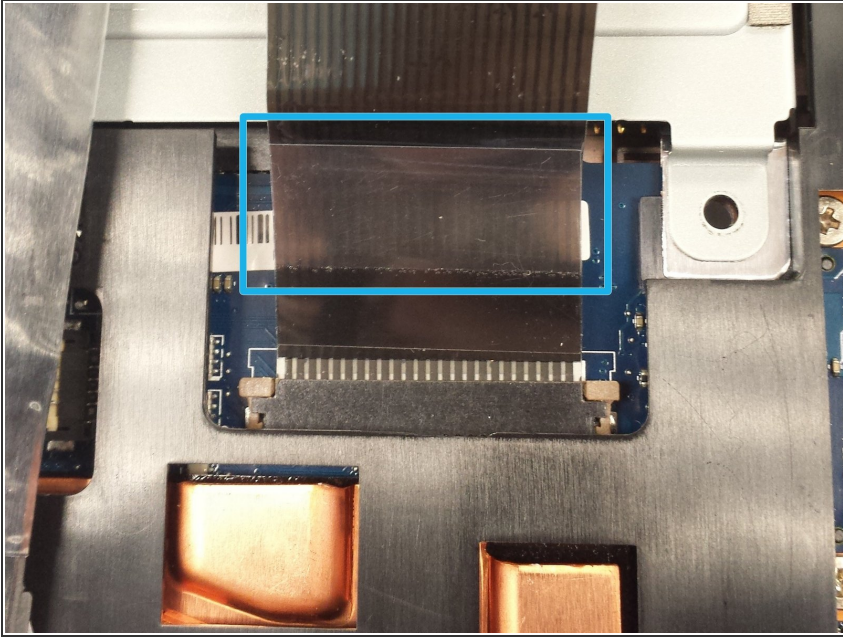


### Step 3



- At the top of the keyboard, insert the metal spudger between the keyboard's metal frame and the body of the laptop as shown
- **When inserting the metal spudger, be sure to place the spudger under the frame and not under a key to avoid damaging the component**
- Gently lift up the keyboard starting at the top of the frame
- **Make sure that you do not damage the ribbon attached to the bottom of the keyboard**

## Step 4



- Pull the clear tab at the end of the ribbon towards the hard drive to detach the ribbon

## Step 5



- Perform steps one through four in reverse order with your new keyboard to finish the replacement process