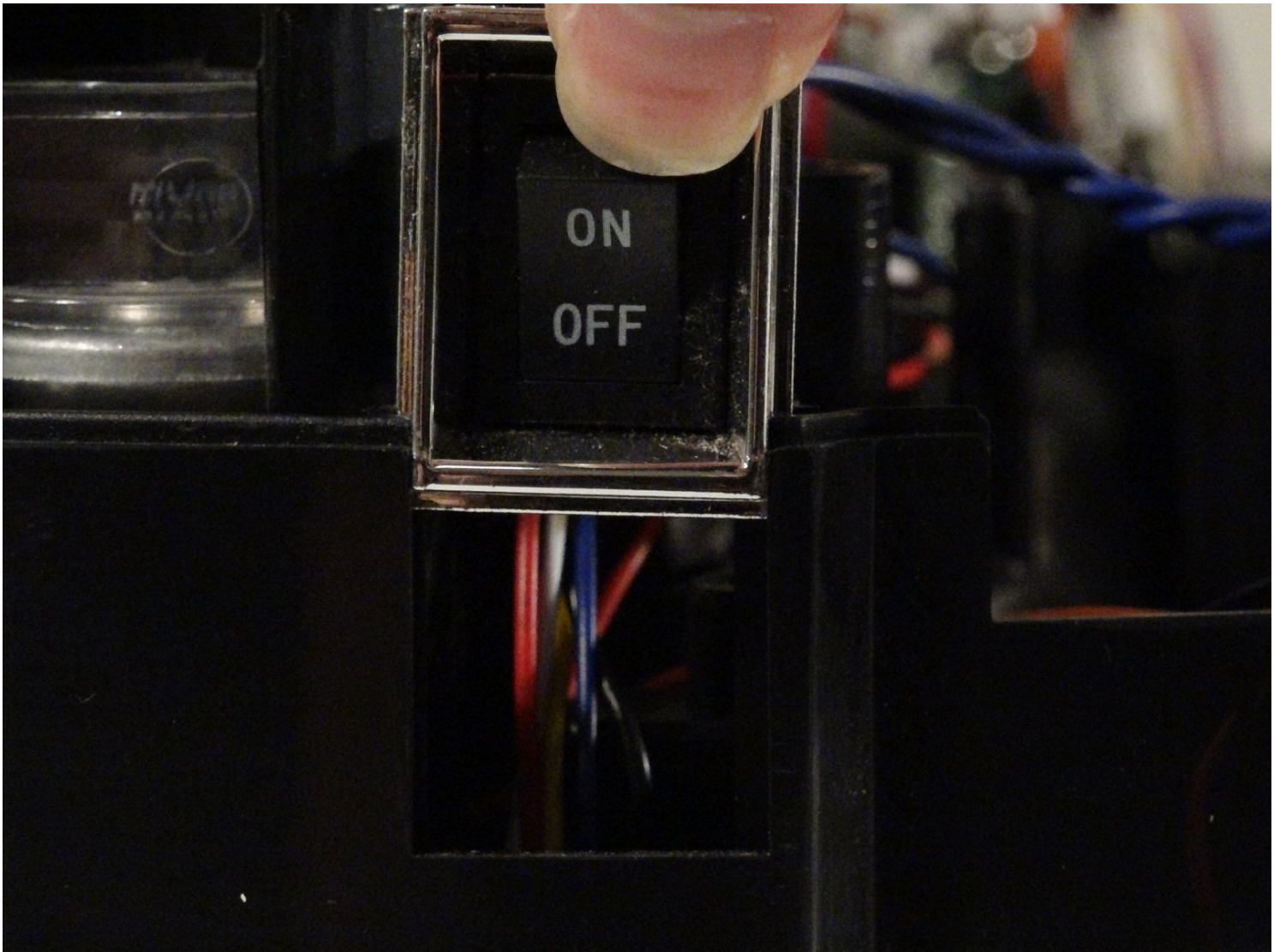




bObsweep Robotic Vacuum Power Switch Replacement

To access this part, first remove bOb's battery...

Written By: Tatiana



INTRODUCTION

To access this part, first remove bOb's battery and leave aside while you open the cover. Then, the main board must also be removed.

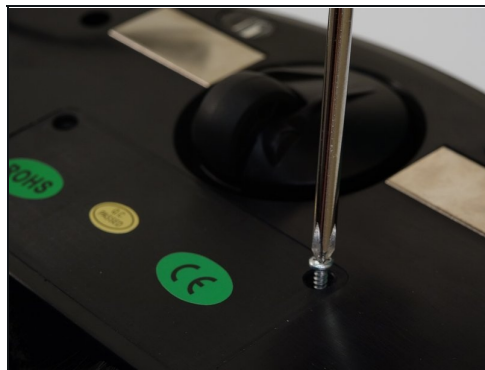
Detailed video instructions:

[video: <https://www.youtube.com/watch?v=gzgyhjEaUvs&index=9&list=PLisHNtIdgWdt2hG0yBhfLGcQGfig703of>]

🔧 TOOLS:

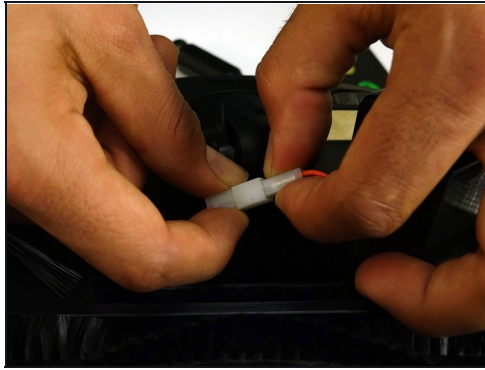
Phillips #2 Screwdriver (1)

Step 1 — Battery



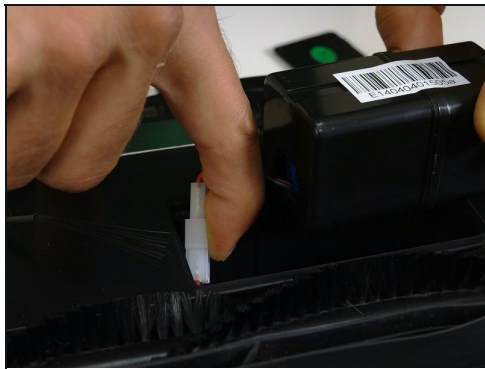
- Unscrew the battery's cover plate on bObsweep's underside, above the main brush.
- Lift the cover plate to expose the battery.

Step 2



- Lift the battery up and out of its compartment.
- Using both hands, pinch the plastic connector where the battery's wiring attaches to bObsweep and pull apart to disconnect.

Step 3



- Connect the wires of the new battery. Push together tightly and it will lock in place.
- Tuck the wires down inside the battery compartment on the right side.
- Lower the battery down into bObsweep with the barcode facing up.

Step 4



- Lower the cover down so it lies flat and the screw holes of the cover line up with those on bObsweep.
- Reinstall the two screws removed in step one to secure the cover and battery in place.

Step 5 — bObsweep's cover



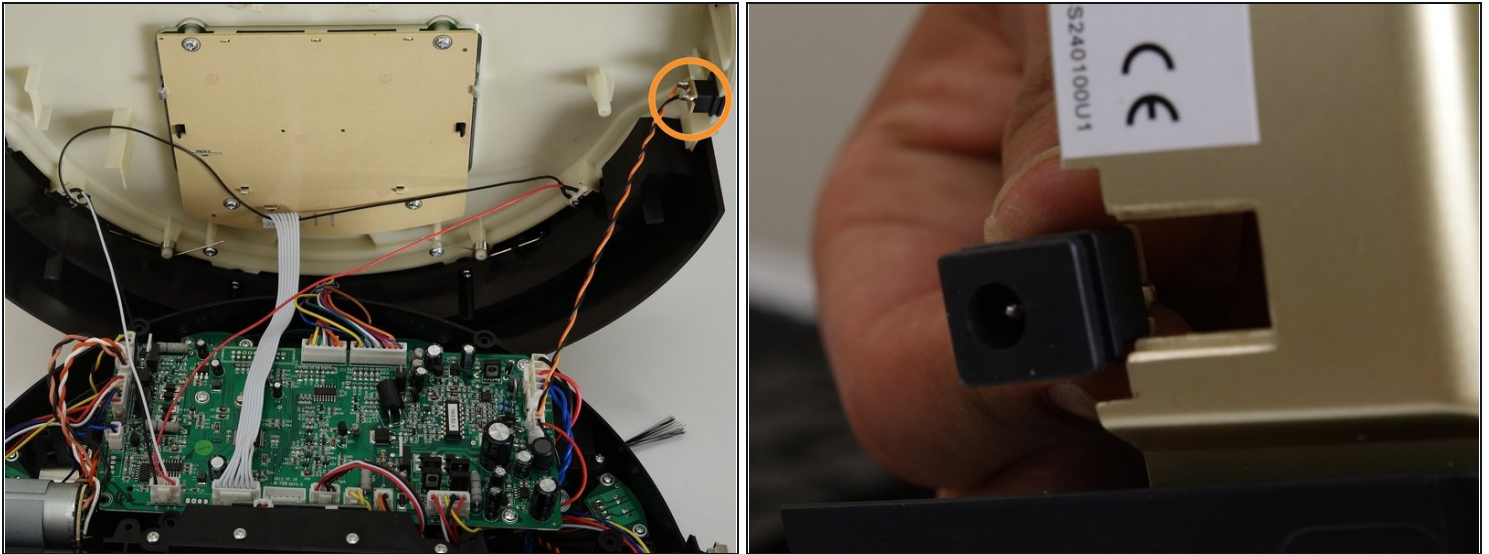
- Flip Bob over and remove the 7 screws around which hold the cover together.
 - Remove the main brush. Unscrew the holder, and lift the brush out. Reminder: Keep this screw separate from the others so you can use it later to reinstall.
- ① Depending on your model, there may be only 6 screws installed on bObsweep.

Step 6



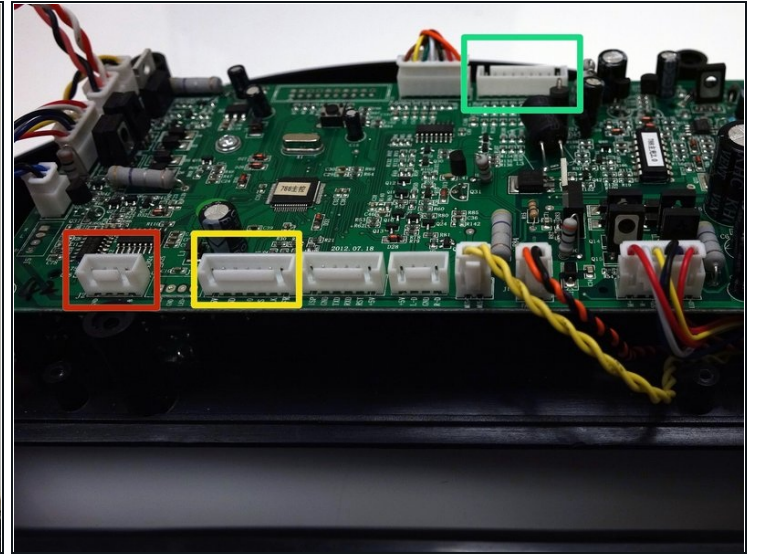
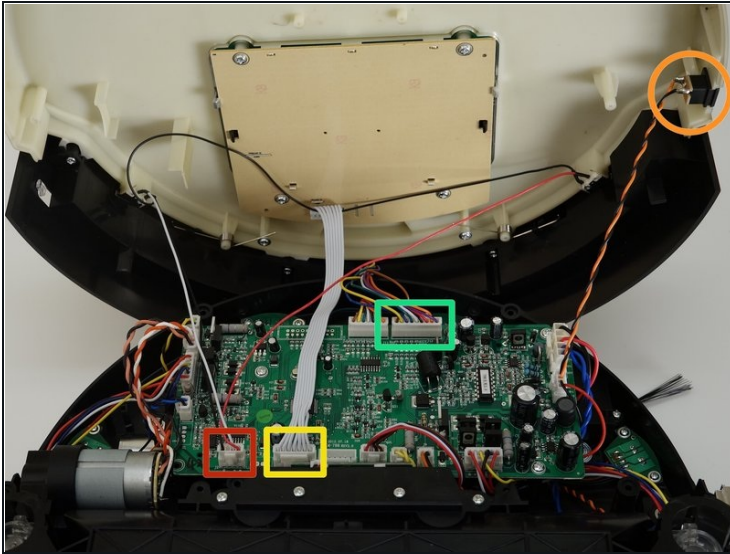
- There are two screw holes inside the brush compartment: one in the centre, one on the left end. Remove both and keep aside for reassembly.
- There are five more screws around bObsweep's edges. Two are installed at the top and bottom, and one on the right end of the main brush.

Step 7



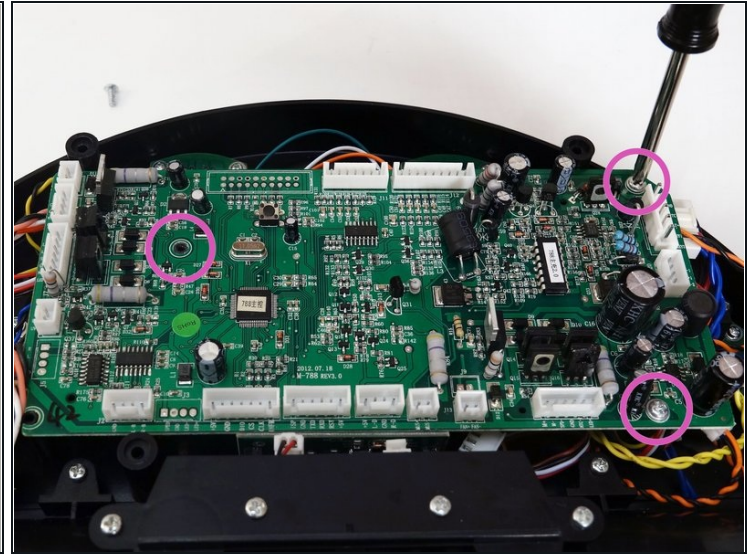
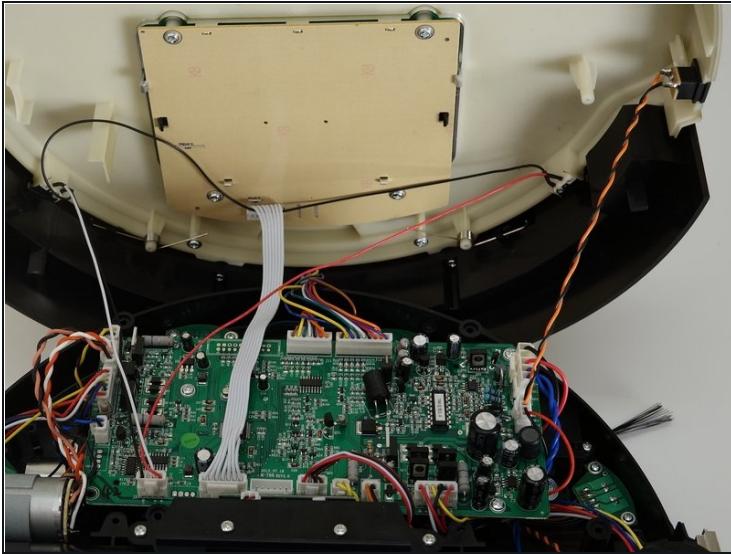
- Flip bOb back over so you can see the screen. Lift the cover up to reveal bObsweep's main board.
- Detach the power inlet from the cover. Grip and slide it out.

Step 8



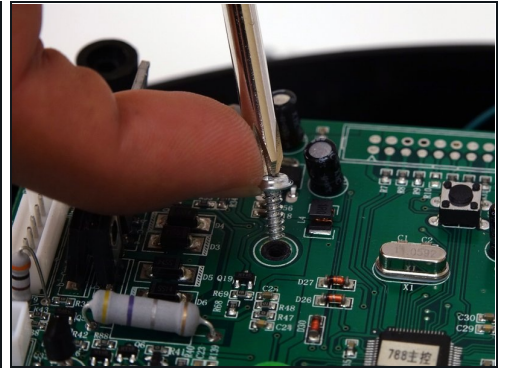
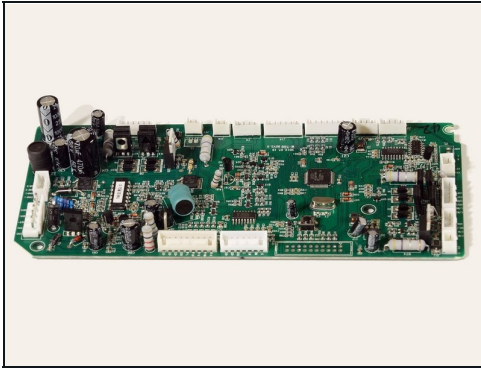
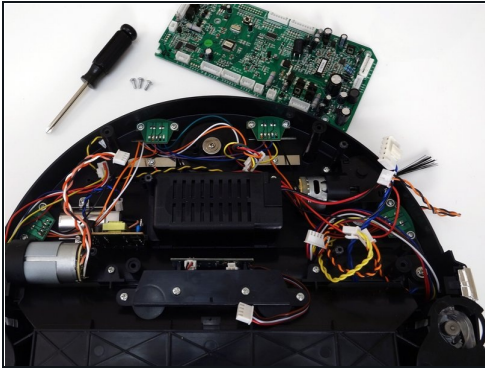
- Remove three circuit plugs from the motherboard. Pinch the small white tab on the side of each circuit plug and pull straight up to release each from the motherboard.
 - 1. On the bottom left corner: a small connector with red, black and white wires.
 - 2. One thick white wire that attaches on the right side of the previous connector.
 - 3. On the top edge of bOb's motherboard: a wide multicoloured connector.
- Place the cover aside and begin your repair.

Step 9 — Main Board



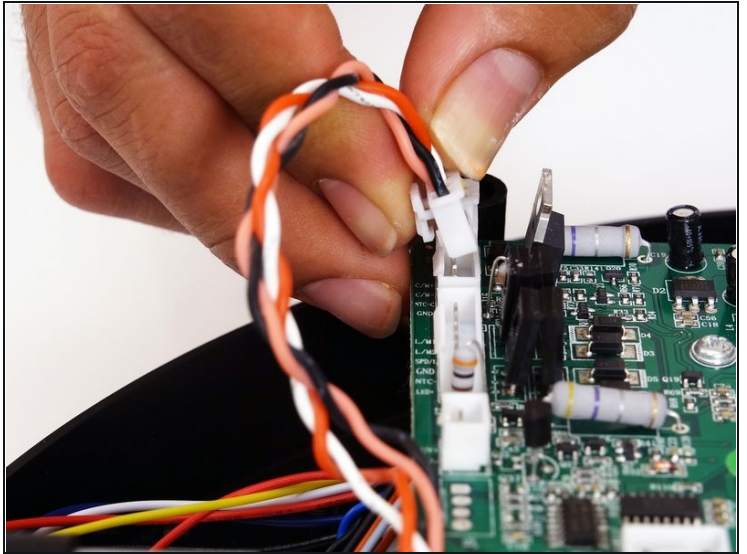
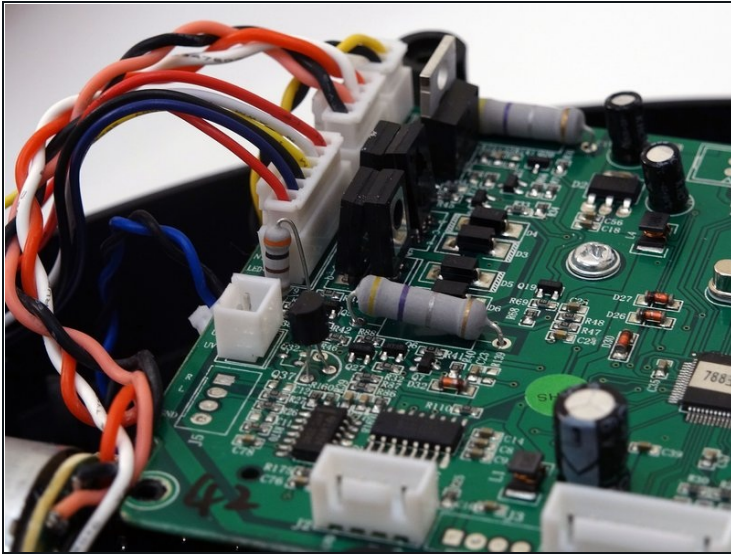
- After opening bObsweep, you will see the main board in the center. To remove it, you will need to unplug 11 more circuit plugs and uninstall 3 screws.
 - There is one in the centre of the motherboard, near the multicoloured plug for Bob's left wheel.
 - The second is close to the top right corner.
 - The third is near the bottom right edge.
- ① Keep all three screws. They will be needed later while installing the replacement main board.

Step 10



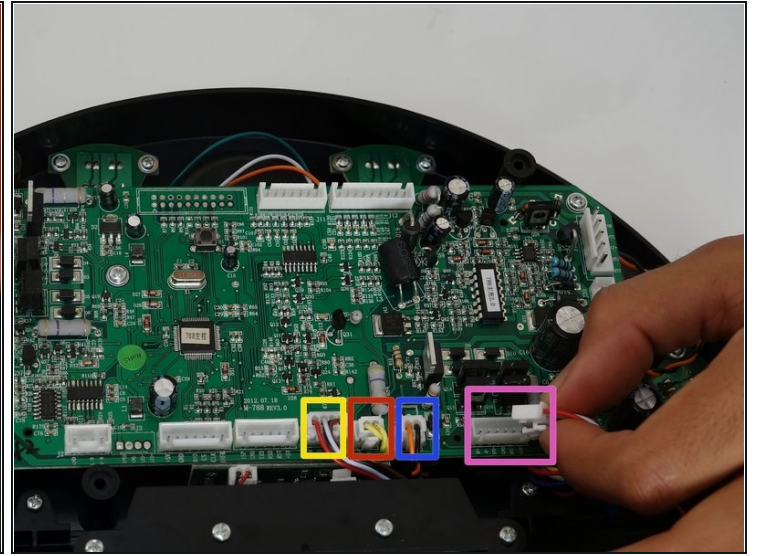
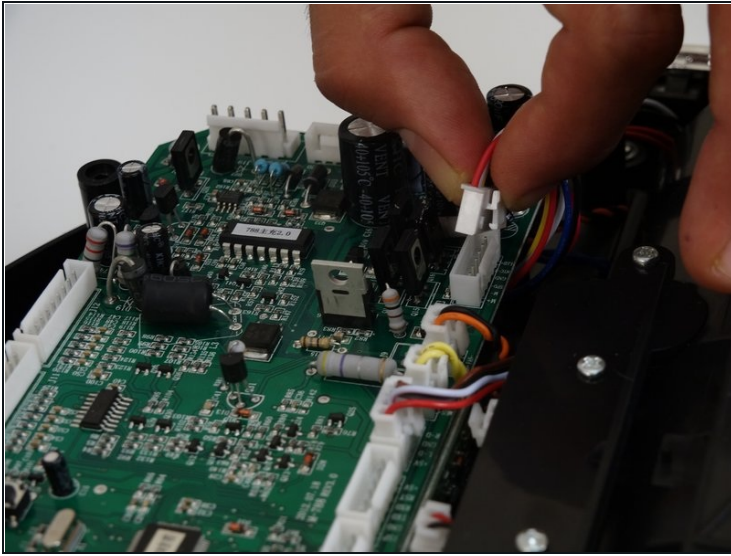
- Detach all of the motherboard's circuit plugs. Keep note of where each plug attaches for installation of the new one.
 - Lift the main board up and replace it with a new functional one. Make sure the replacement main board lies flat on top of the screw posts inside bObsweep.
 - Re-install the 3 screws you removed in the previous step.
- ⓘ All the circuit plugs you removed in the first step must be reconnected in the correct spaces.

Step 11



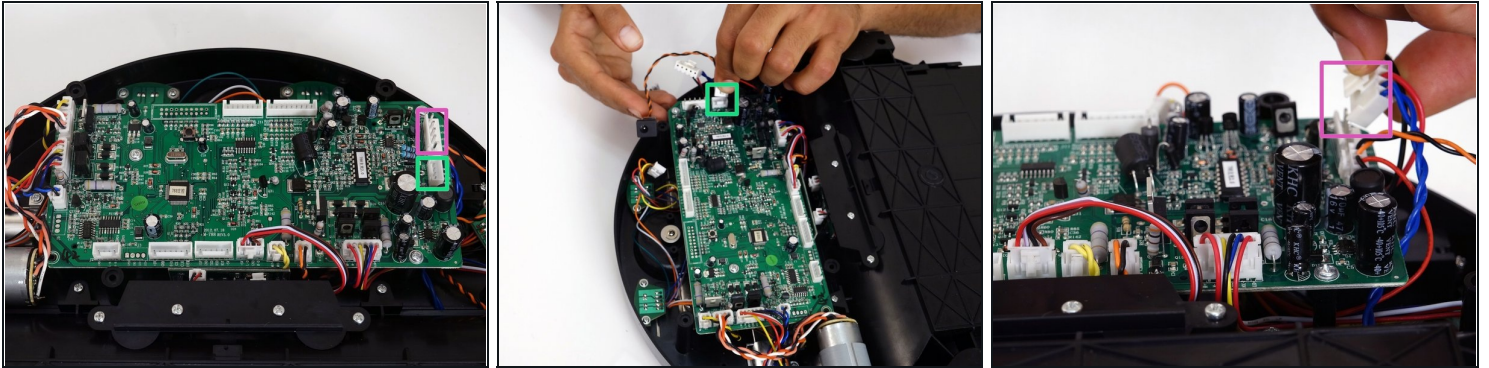
- The order along the motherboard's left edge from the top down is:
 - A small yellow and black circuit plug.
 - The main brush motor's circuit plug which has two pairs of twisted wires, one red and white, the other pink and black.
 - A wider, multicoloured circuit plug which is attached to bObsweep's left wheel.
 - Finally, a small circuit plug with black and blue twisted wires.
- When all have been connected to bObsweep, begin putting the cover back together before vacuuming again.

Step 12



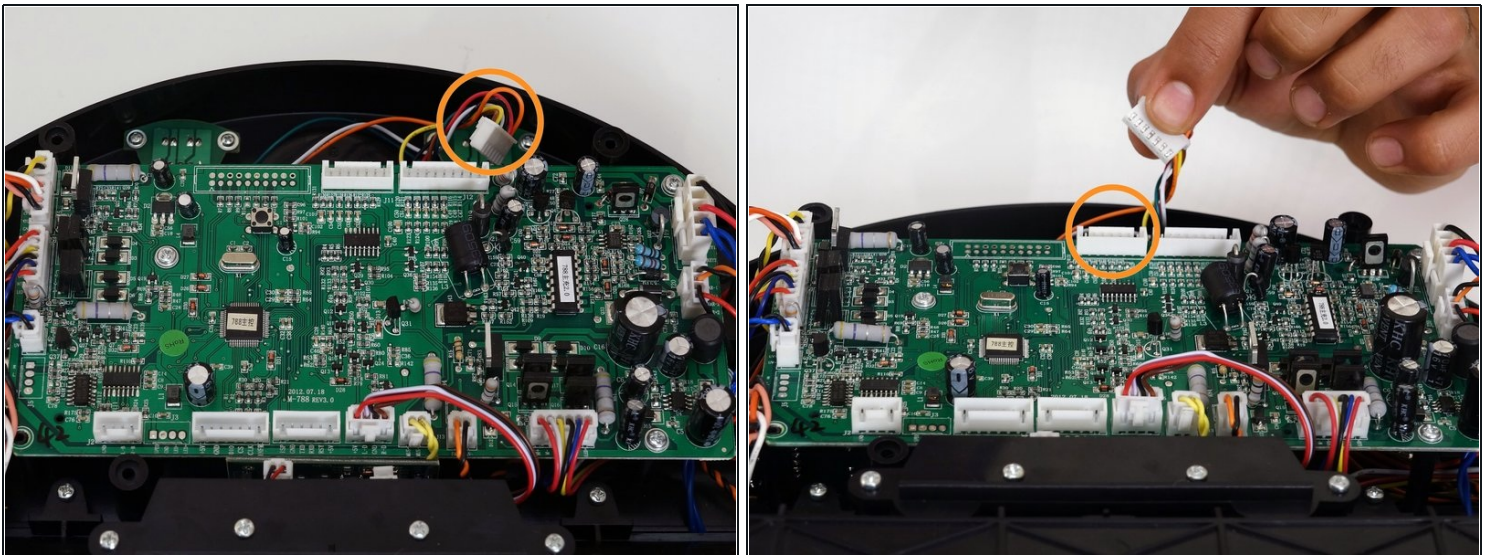
- The order from left to right along the bottom ledge should be reconnected as follows:
 - A circuit plug with multicolored wires and a wide base which connects to Bob's right wheel.
 - A small black and orange wired circuit plug
 - A small yellow wired plug.
 - A small circuit plug with red, black, white, and brown wires.
- ① There will be 3 empty spaces left on this row. Two will be filled when you put the cover back on.

Step 13



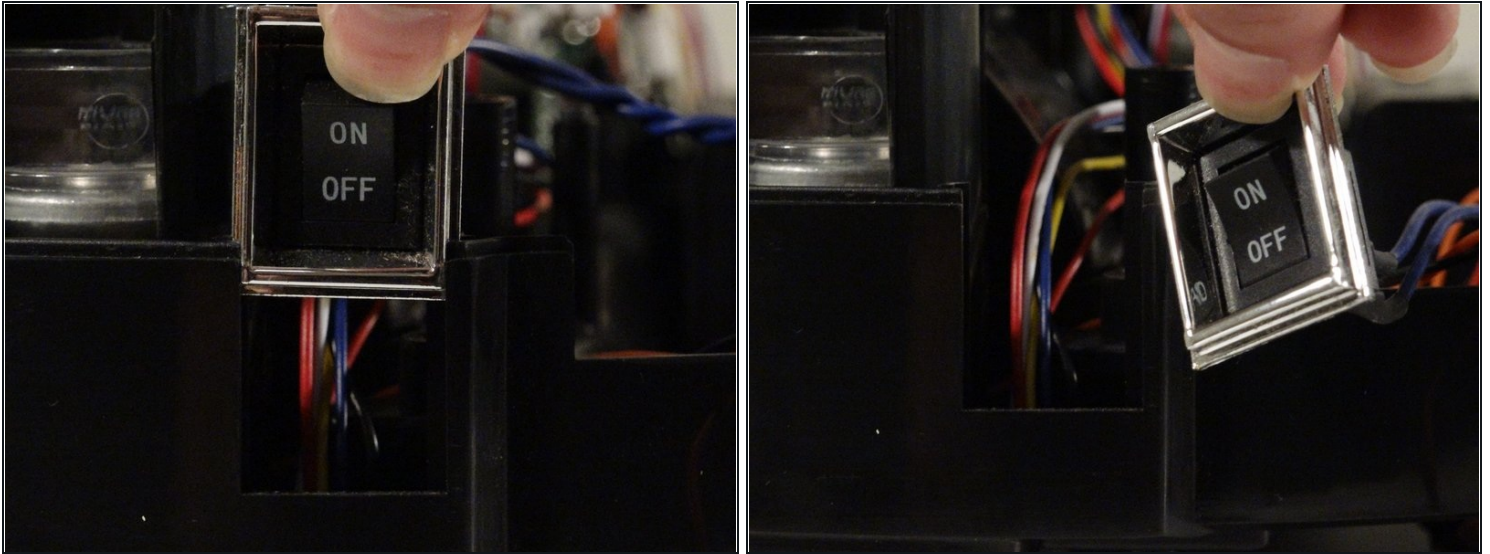
- At the top of the motherboard's right edge is a wide, red, black, and blue circuit plug.
- Beneath that is a smaller plug for Bob's power inlet with orange and black wires.
- Plug each one into the motherboard in the suitable slot.

Step 14



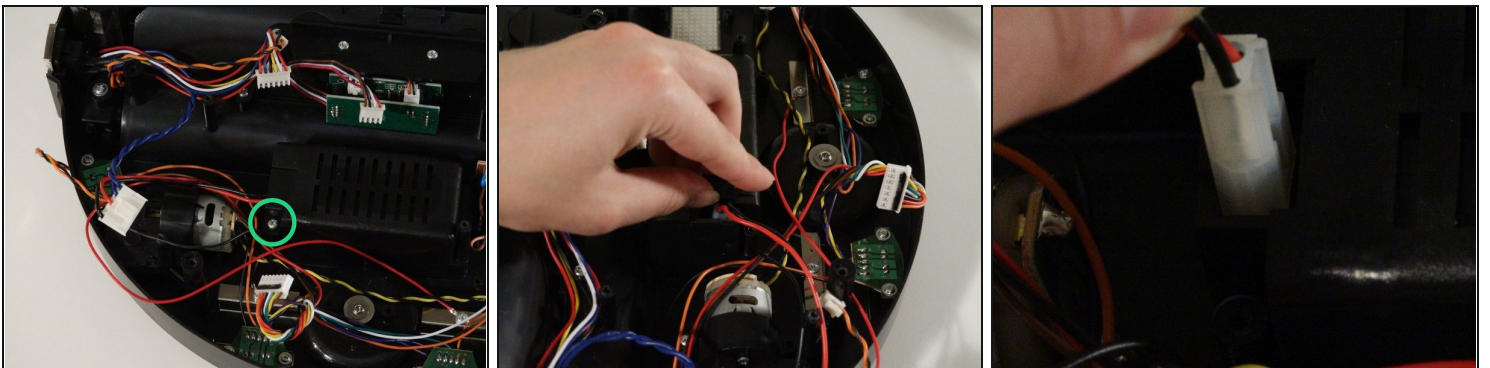
- There are two wide, multicoloured circuit plugs that attach to the top edge of the motherboard. One was removed to detach bObsweep's cover, so the space will stay empty for now.
- The other plugs in on the right side of the open space.

Step 15 — Power Switch



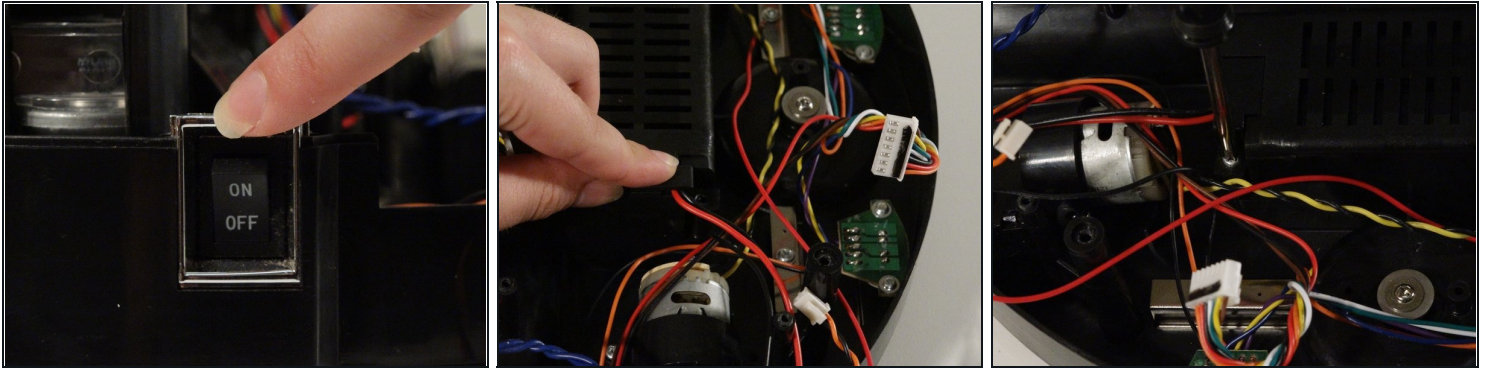
- The power switch is on the right side of bOb's bottom half. Slide it straight upwards to remove the switch.

Step 16



- The wires of the power switch are secured inside the battery compartment. Remove the screw in the bottom left corner of the battery holder, and lift the plastic piece up.
- Pull the wire out of the compartment to detach the power switch and its wires from bObsweep.

Step 17



- Slide your new switch into the open space on bOb's side.
- Then, place the black and red wired end into the battery compartment. There is an indent at the bottom corner of the battery holder, where the wires should sit. When you've replaced everything correctly, lay the wire cover down and install the screw that secures it to bOb.
- Once the power switch repair is complete, replace the main board, battery, and cover before using bOb again.
- For a guide on closing Bob go to: [Closing bObsweep's cover after repair](#)

To reassemble your device, follow the [Closing bObsweep tutorial](#).