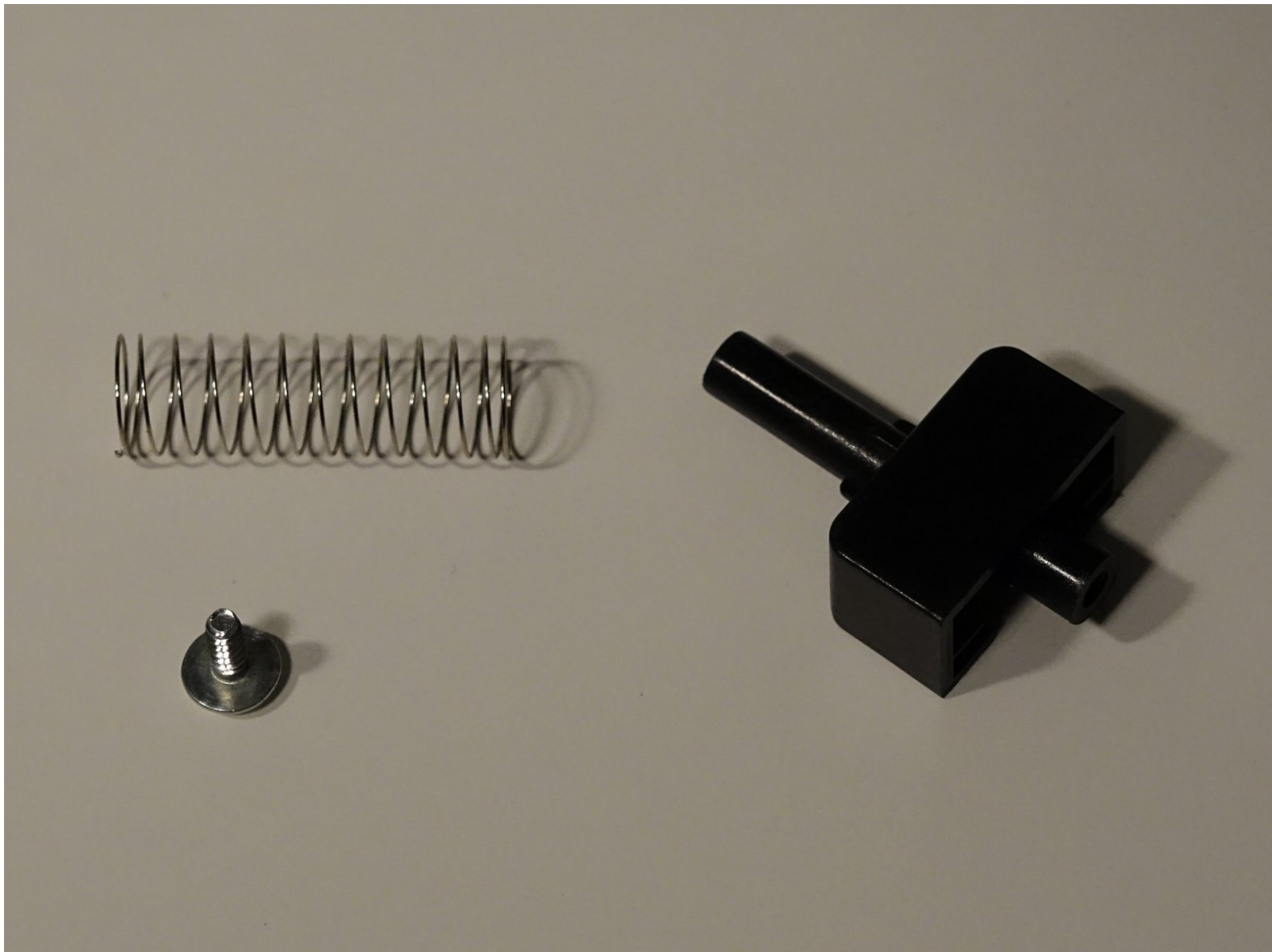




# bObsweep Robotic Vacuum Cleaner Clutch end of Main Brush Replacement

How to replace the clutch end of bObsweep Standard or Pethair's main brush, an essential piece for effective sweeping on either model.

Written By: Tatiana



---

## INTRODUCTION

This guide shows the steps in removing the part of Bob which holds the main brush and adjusts up and down for flooring transitions.

---

### TOOLS:

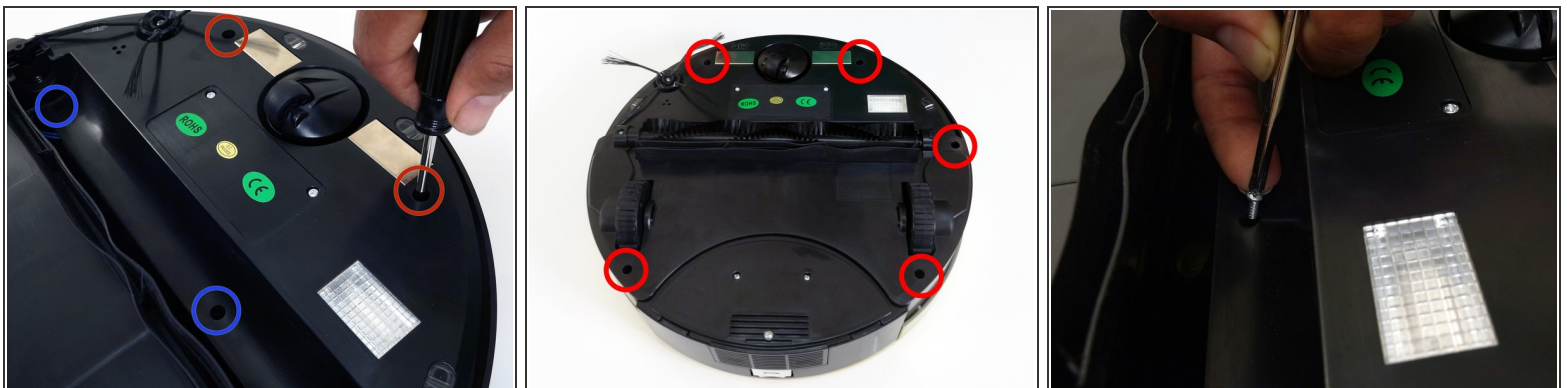
- [Phillips #2 Screwdriver](#) (1)
-

## Step 1 — bObsweep's cover



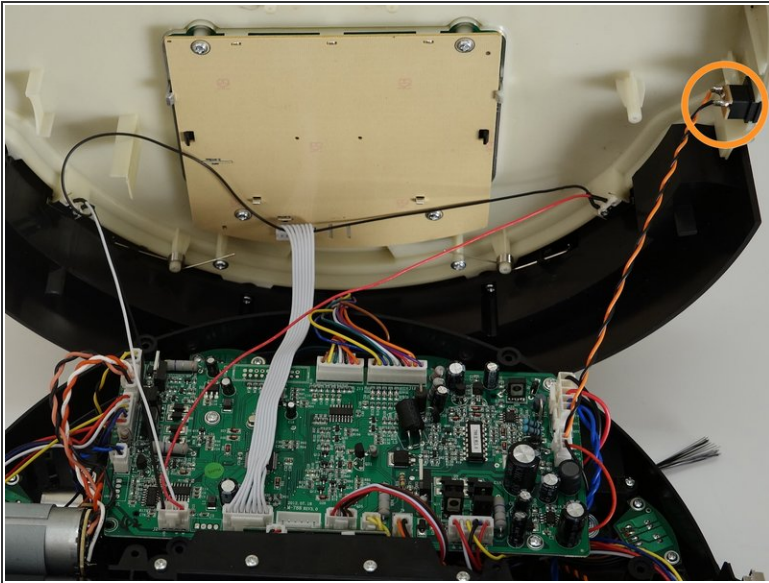
- Flip Bob over and remove the 7 screws around which hold the cover together.
  - Remove the main brush. Unscrew the holder, and lift the brush out. Reminder: Keep this screw separate from the others so you can use it later to reinstall.
- ⓘ Depending on your model, there may be only 6 screws installed on bObsweep.

## Step 2



- There are two screw holes inside the brush compartment: one in the centre, one on the left end. Remove both and keep aside for reassembly.
- There are five more screws around bObsweep's edges. Two are installed at the top and bottom, and one on the right end of the main brush.

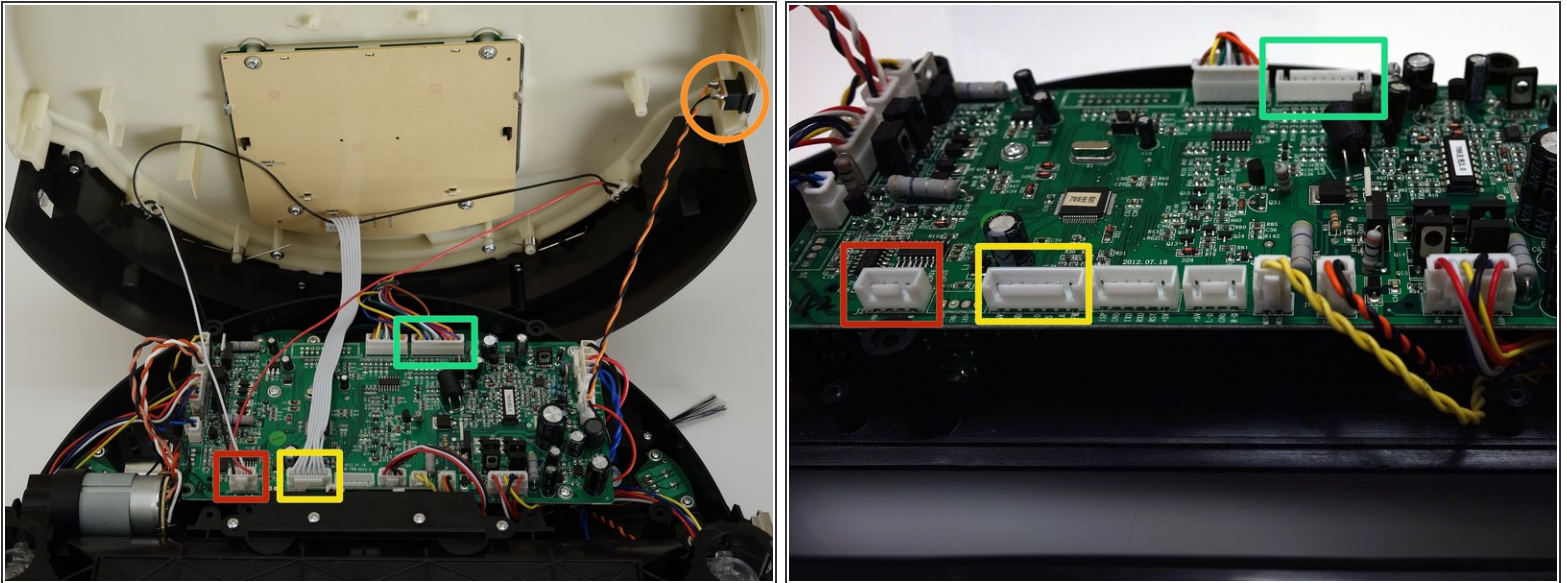
## Step 3



- Flip bOb back over so you can see the screen. Lift the cover up to reveal bObsweep's main board.
- Detach the power inlet from the cover. Grip and slide it out.

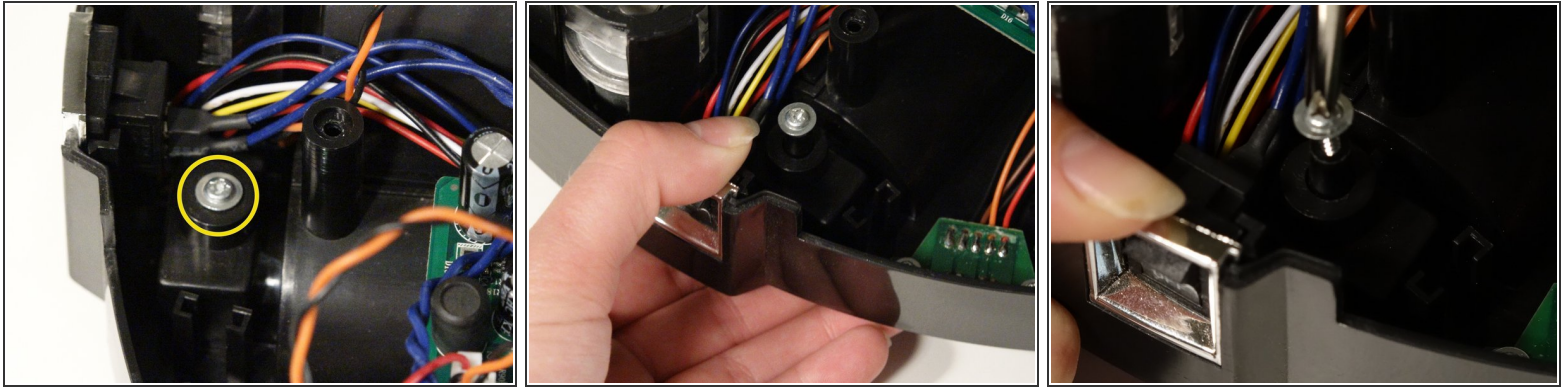


## Step 4



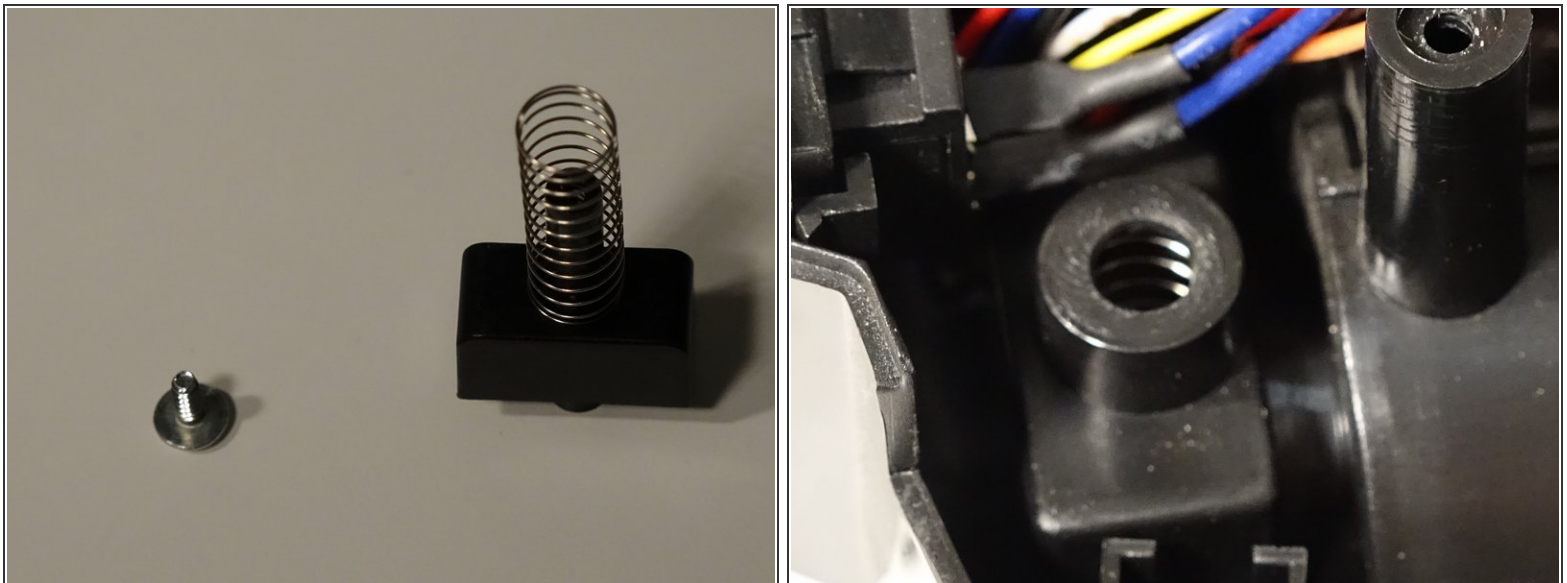
- Remove three circuit plugs from the motherboard. Pinch the small white tab on the side of each circuit plug and pull straight up to release each from the motherboard.
  - 1. On the bottom left corner: a small connector with red, black and white wires.
  - 2. One thick white wire that attaches on the right side of the previous connector.
  - 3. On the top edge of bOb's motherboard: a wide multicoloured connector.
- Place the cover aside and begin your repair.

## Step 5 — Clutch end of Main Brush



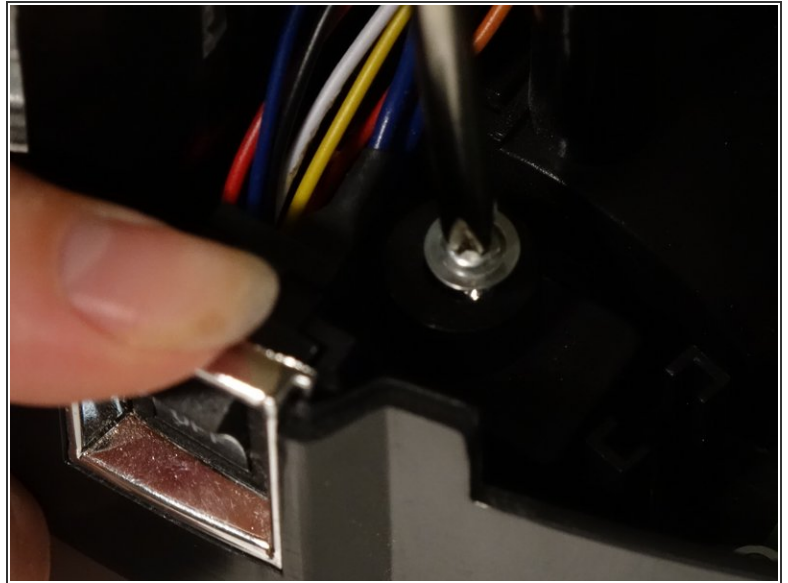
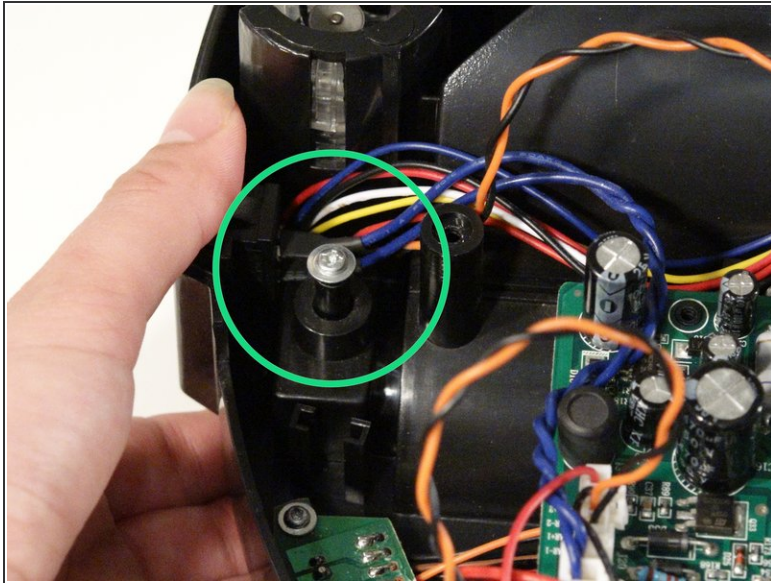
- The clutch end of the main brush, where the pin sits, is held inside Bob with one screw. It is found beside the power switch.
- Use one hand to push the clutch up, then uninstall the screw and keep it aside for later.

## Step 6



- Lift bOb up, and two pieces will fall out: the clutch and a spring on top of it.
- Place your new parts underneath bOb. Hold the spring on top of the clutch piece while putting it back in its space, then reinstall the screw.

## Step 7



- Make sure to hold the clutch piece underneath bOb while installing the screw, so you can see the screw post protruding inside bObsweep.
- When you're finished, reattach the cover and install the main brush. Follow instructions in the [Closing bObsweep's cover after repair](#)

To close bObsweep after this repair, follow instructions in the [Closing bObsweep's cover after repair](#)