



Replacing bObsweep Standard or Pethair's Bumper Sensors Replacement

The bumper sensors on bObsweep Standard and...

Written By: Tatiana



INTRODUCTION

The bumper sensors on bObsweep Standard and Pethair models are essential in directing movements and determining Bob's distance from obstacles.

Video tutorial:

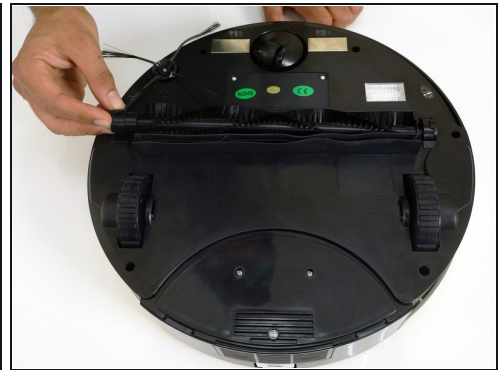
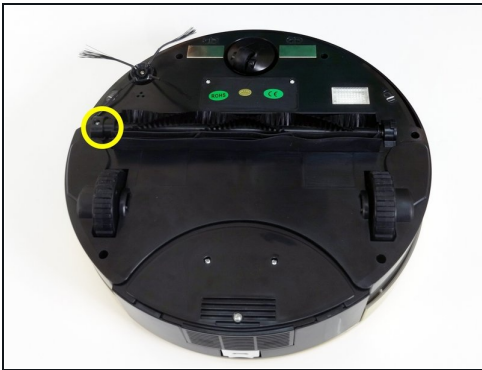
[video: [https://www.youtube.com/watch?](https://www.youtube.com/watch?v=MHkxTVuLWMs&list=PLisHNtIdgWdt2hG0yBhfLGcQGfig703of&index=14)

[v=MHkxTVuLWMs&list=PLisHNtIdgWdt2hG0yBhfLGcQGfig703of&index=14](https://www.youtube.com/watch?v=MHkxTVuLWMs&list=PLisHNtIdgWdt2hG0yBhfLGcQGfig703of&index=14)]

TOOLS:

Phillips #2 Screwdriver (1)

Step 1 — bObsweep's cover



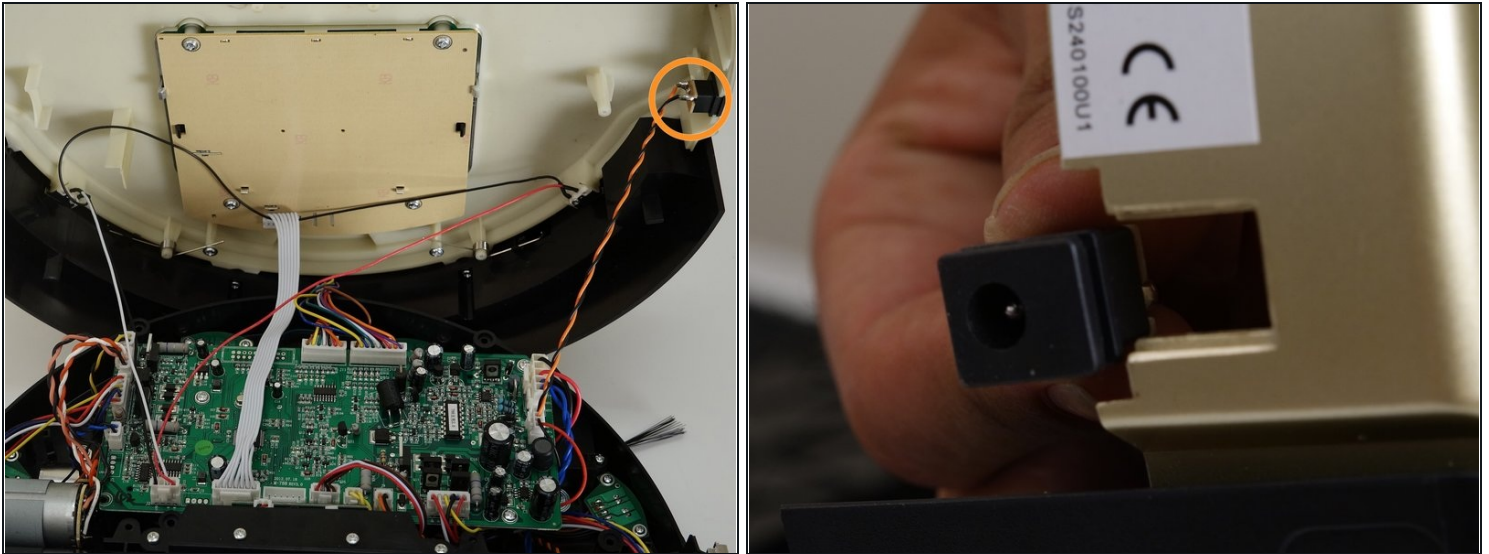
- Flip Bob over and remove the 7 screws around which hold the cover together.
 - Remove the main brush. Unscrew the holder, and lift the brush out. Reminder: Keep this screw separate from the others so you can use it later to reinstall.
- ① Depending on your model, there may be only 6 screws installed on bObsweep.

Step 2



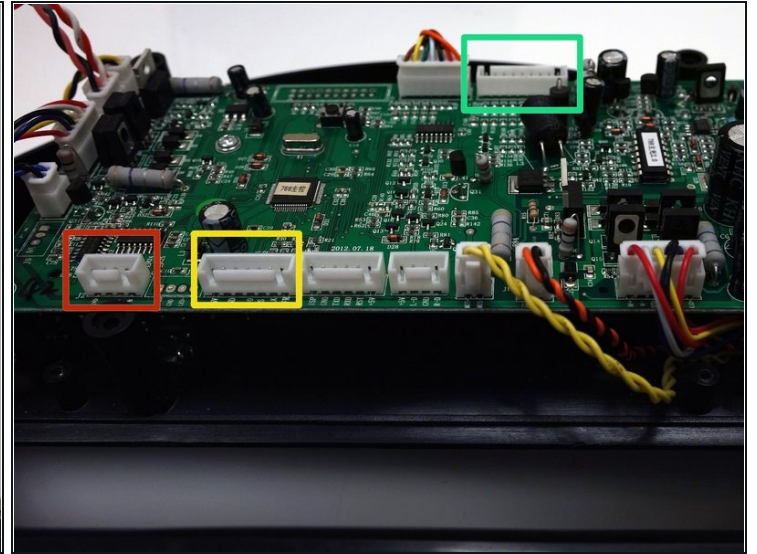
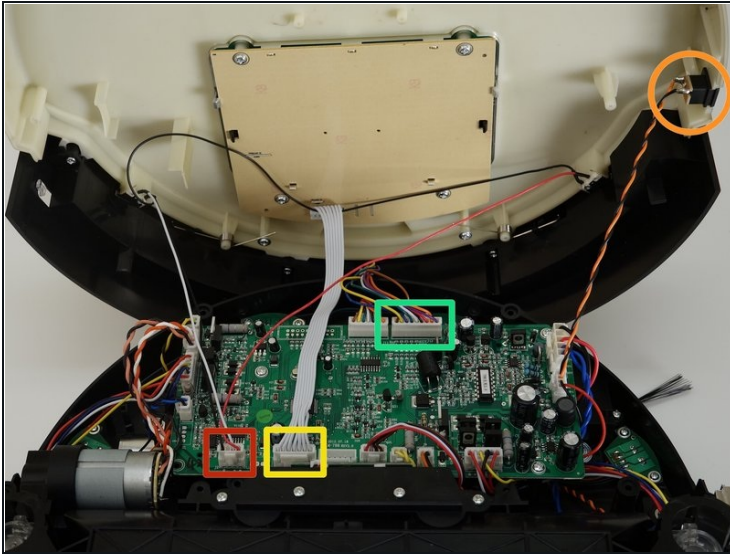
- There are two screw holes inside the brush compartment: one in the centre, one on the left end. Remove both and keep aside for reassembly.
- There are five more screws around bObsweep's edges. Two are installed at the top and bottom, and one on the right end of the main brush.

Step 3



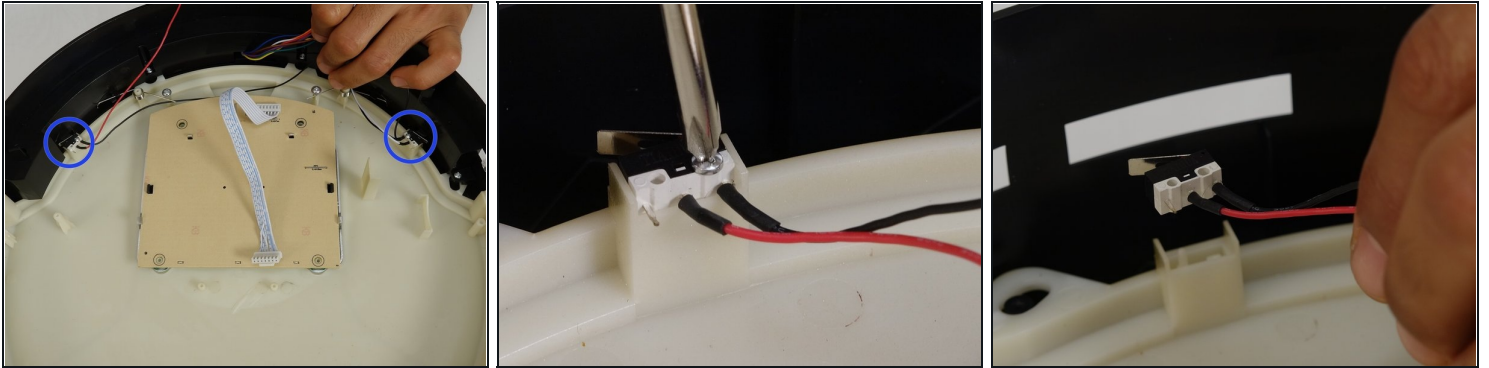
- Flip bOb back over so you can see the screen. Lift the cover up to reveal bObsweep's main board.
- Detach the power inlet from the cover. Grip and slide it out.

Step 4



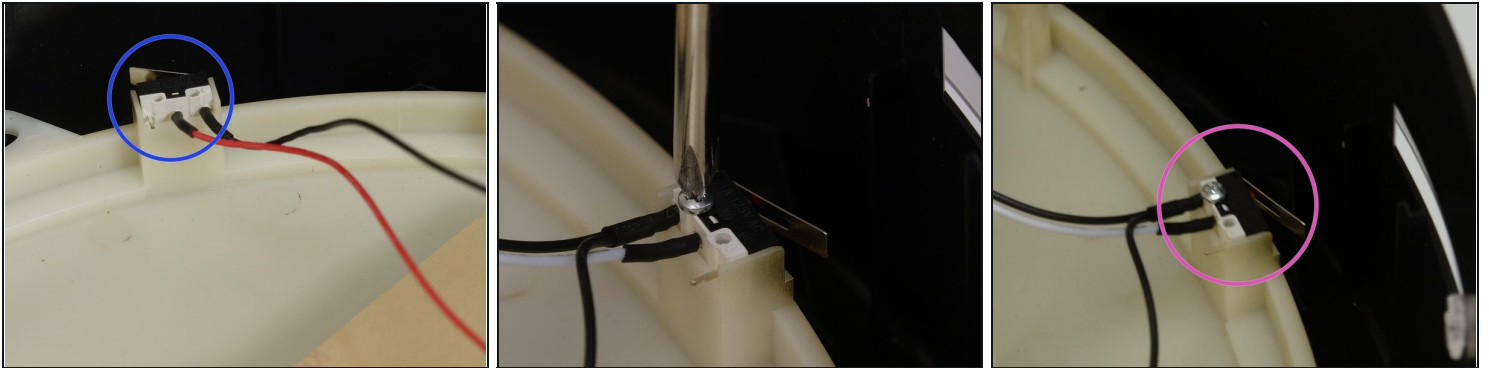
- Remove three circuit plugs from the motherboard. Pinch the small white tab on the side of each circuit plug and pull straight up to release each from the motherboard.
 - 1. On the bottom left corner: a small connector with red, black and white wires.
 - 2. One thick white wire that attaches on the right side of the previous connector.
 - 3. On the top edge of bOb's motherboard: a wide multicoloured connector.
- Place the cover aside and begin your repair.

Step 5 — Bumper Sensors



- There are two sensors that touch the inside of bOb's bumper wired to one another as well as one circuit plug.
- To remove these , uninstall the two screws holding them in place. Then, lift each sensor up.

Step 6



- Place your new sensors in the open spaces.
- Make sure you place the sensor with the red wire on the left side when bOb's cover is upside down.
- The black wired sensor should be on the right side during the repair.
- Replace the screws in the innermost holes. Then follow the guide for [Closing bObsweep's cover after repair](#)

To reassemble your device, follow these instructions in: [Closing bObsweep's cover after repair](#)