



Replacing bObsweep Standard's LCD Screen

Directions on removing bObsweep standard's LCD...

Written By: Tatiana



INTRODUCTION

Directions on removing bObsweep standard's LCD display and replacing with a new one.

Video guide:

[video: [https://www.youtube.com/watch?](https://www.youtube.com/watch?v=vUYmL9K1fnI&index=11&list=PLisHNtIdgWdt2hG0yBhfLGcQGfig703of)

[v=vUYmL9K1fnI&index=11&list=PLisHNtIdgWdt2hG0yBhfLGcQGfig703of\]](https://www.youtube.com/watch?v=vUYmL9K1fnI&index=11&list=PLisHNtIdgWdt2hG0yBhfLGcQGfig703of)

TOOLS:

Phillips #2 Screwdriver (1)

Step 1 — bObsweep's cover



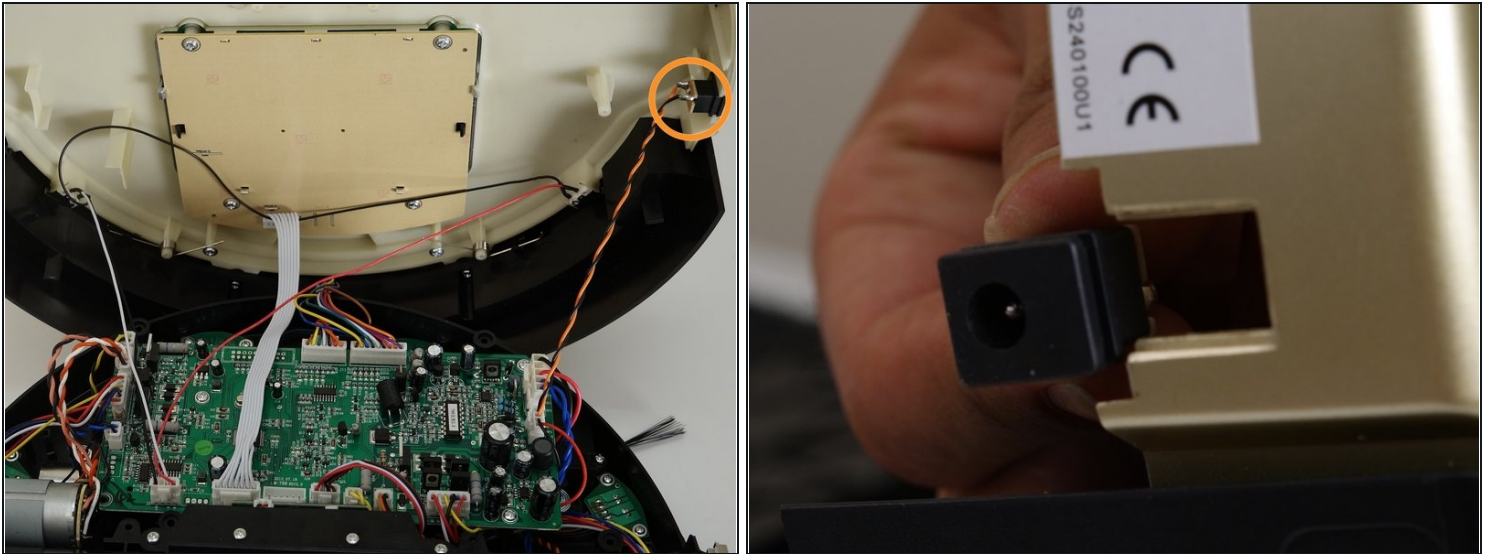
- Flip Bob over and remove the 7 screws around which hold the cover together.
 - Remove the main brush. Unscrew the holder, and lift the brush out. Reminder: Keep this screw separate from the others so you can use it later to reinstall.
- ① Depending on your model, there may be only 6 screws installed on bObsweep.

Step 2



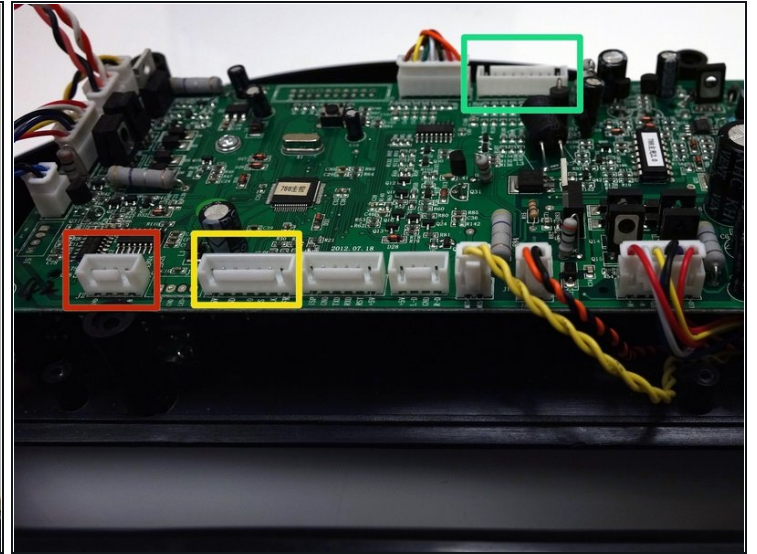
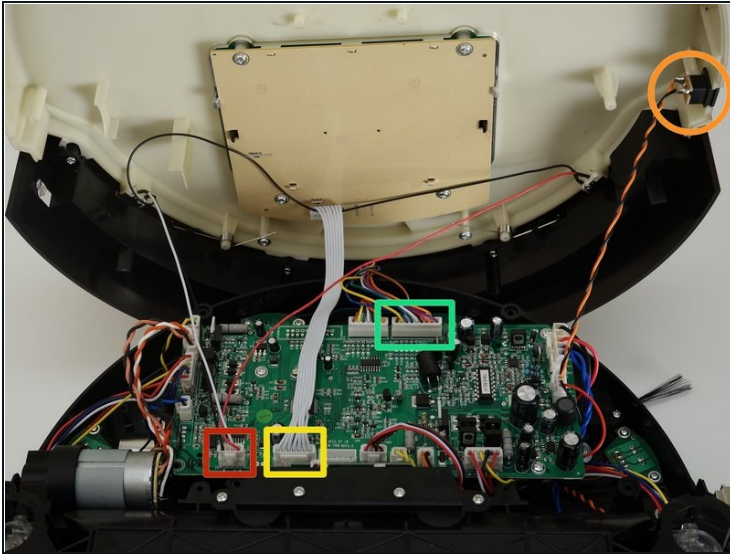
- There are two screw holes inside the brush compartment: one in the centre, one on the left end. Remove both and keep aside for reassembly.
- There are five more screws around bObsweep's edges. Two are installed at the top and bottom, and one on the right end of the main brush.

Step 3



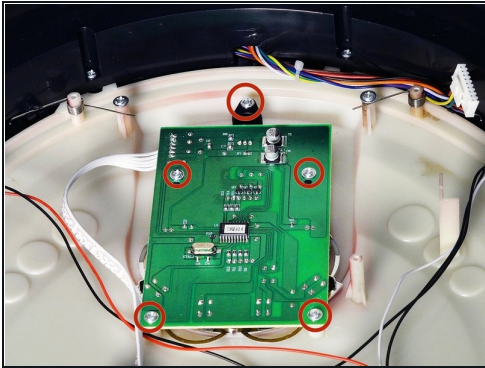
- Flip bOb back over so you can see the screen. Lift the cover up to reveal bObsweep's main board.
- Detach the power inlet from the cover. Grip and slide it out.

Step 4



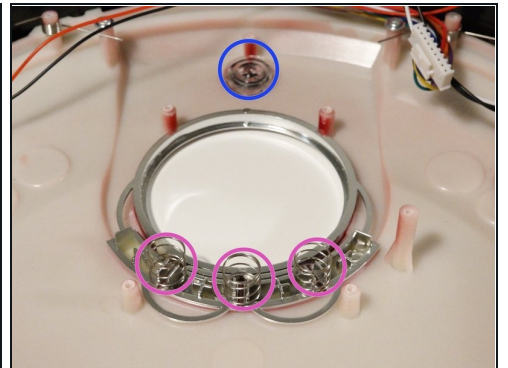
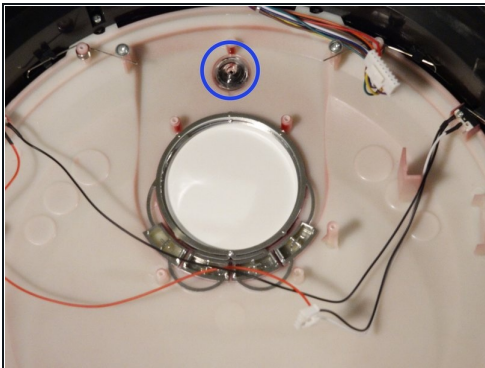
- Remove three circuit plugs from the motherboard. Pinch the small white tab on the side of each circuit plug and pull straight up to release each from the motherboard.
 - 1. On the bottom left corner: a small connector with red, black and white wires.
 - 2. One thick white wire that attaches on the right side of the previous connector.
 - 3. On the top edge of bOb's motherboard: a wide multicoloured connector.
- Place the cover aside and begin your repair.

Step 5 — bObsweep Standard's LCD Screen



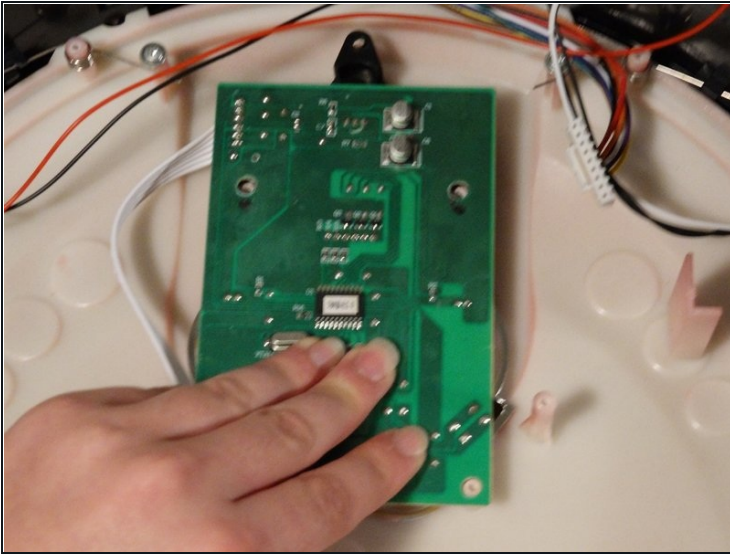
- Bobsweep Standard has a circular screen that is held onto the cover by five screws. Remove these to lift all pieces of the screen out. They are
 - LCD screen
 - An infrared sensor on top of the screen which will easily pop out after removal
 - Three springs
 - Silver cover plate for bOb's buttons.

Step 6



- Once you've removed all the pieces, you can replace them in the following order:
 - The Infrared sensor should go in with the black side on bOb's outside.
 - The button cover goes into the space on the cover.
 - Then the three springs sit on top of the cover, on the spring holders between the plus signs.

Step 7



- Finally the LCD display goes on top of the springs, facing down. Make sure to line up the holes in the screen with the screw posts on bOb's cover.
- Install all 5 screws to hold the screen and Infrared sensor in place.
- To complete your repair, follow the [Closing bObsweep's cover after repair](#)

To reassemble your device, follow the guide for closing bObsweep Standard or Pethair.
[Closing bObsweep's cover after repair](#)