



IBM ThinkPad T41 Modem Replacement

This is a step by step guide for replacing/repairing the modem of an IBM ThinkPad T41 laptop. It will aid you in taking apart your laptop to reach the modem.

Written By: Marissa Blustein



INTRODUCTION

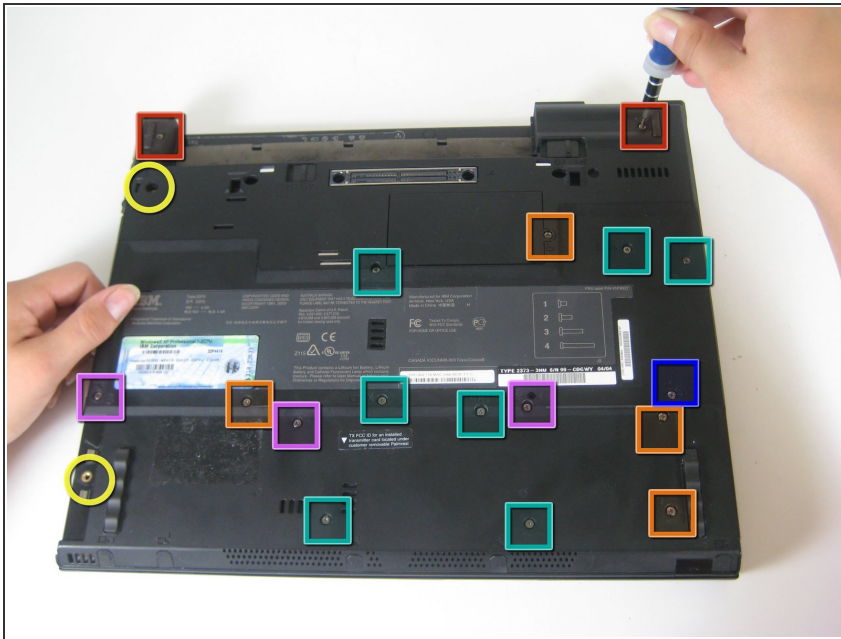
This repair guide will aid you in taking apart your IBM ThinkPad T41 laptop to reach and replace its modem.



TOOLS:

- [Phillips #1 Screwdriver](#) (1)
 - [Spudger](#) (1)
-

Step 1 — Keyboard



- Close the screen and turn the closed laptop over.
- Remove all 17 screws on the bottom of the computer.
- ⓘ The multiple colors (turquoise, red, blue, orange, yellow, and purple) are for organizational purposes, indicating different screws.
- The yellow marker at the rear denotes the UltraBay device retaining screw. This screw is optional as the UltraBay mechanism will hold the drive or battery in place anyway. The yellow marker at the front denotes the hard disk caddy retaining screw.

Step 2



- Remove the extra RAM cover, by lifting where the screw was and pulling out.

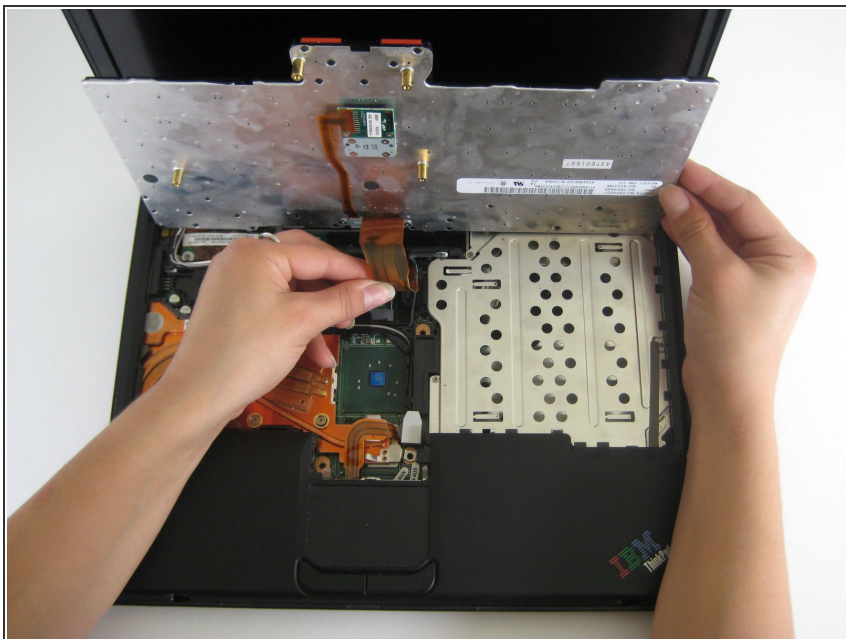
Step 3



- Turn the laptop right side up and open the screen.
- Lift the keyboard, using a spudger at the seam between the keyboard and trackpad.

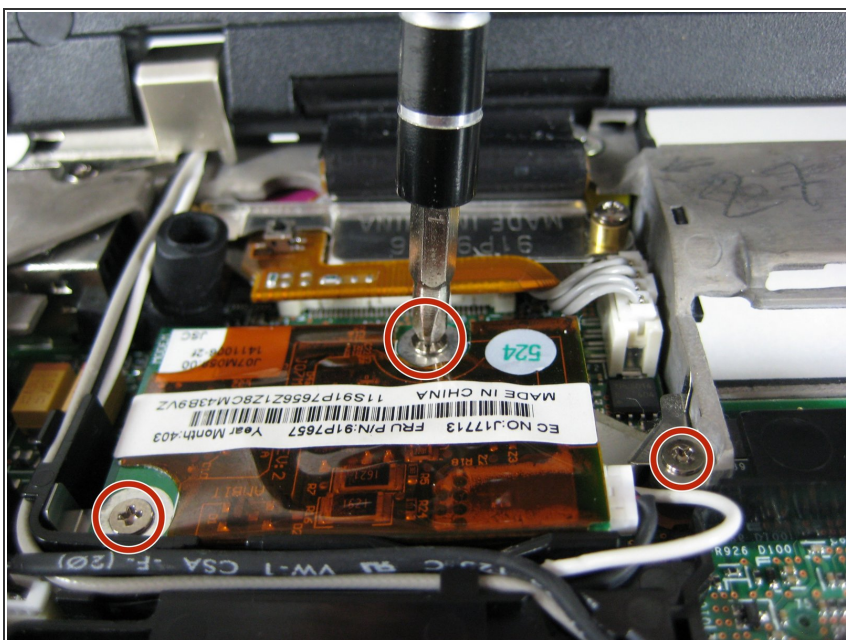
⚠ Careful of the ribbon cable underneath, which may tear if the keyboard is lifted too vigorously.

Step 4



- Unplug the keyboard's ribbon cable, by lifting up the edges of the plug.
- Remove the keyboard.

Step 5 — Modem



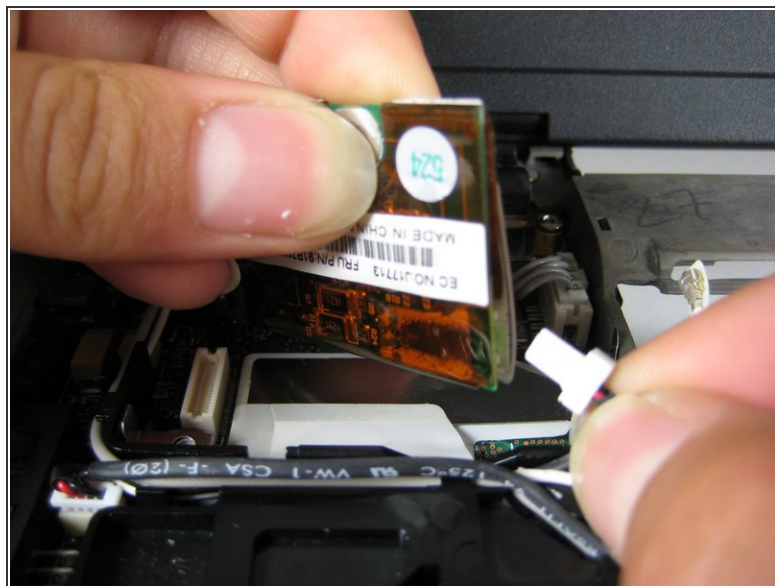
- Remove the three screws holding down the modem in the upper left corner of the laptop.

Step 6



- Lift the modem up, unplugging it from the motherboard as you lift.

Step 7



- Pull out the wire that connects the modem to the screen.
- Unplug the other cable that attaches the modem to the motherboard

To reassemble your device, follow these instructions in reverse order.