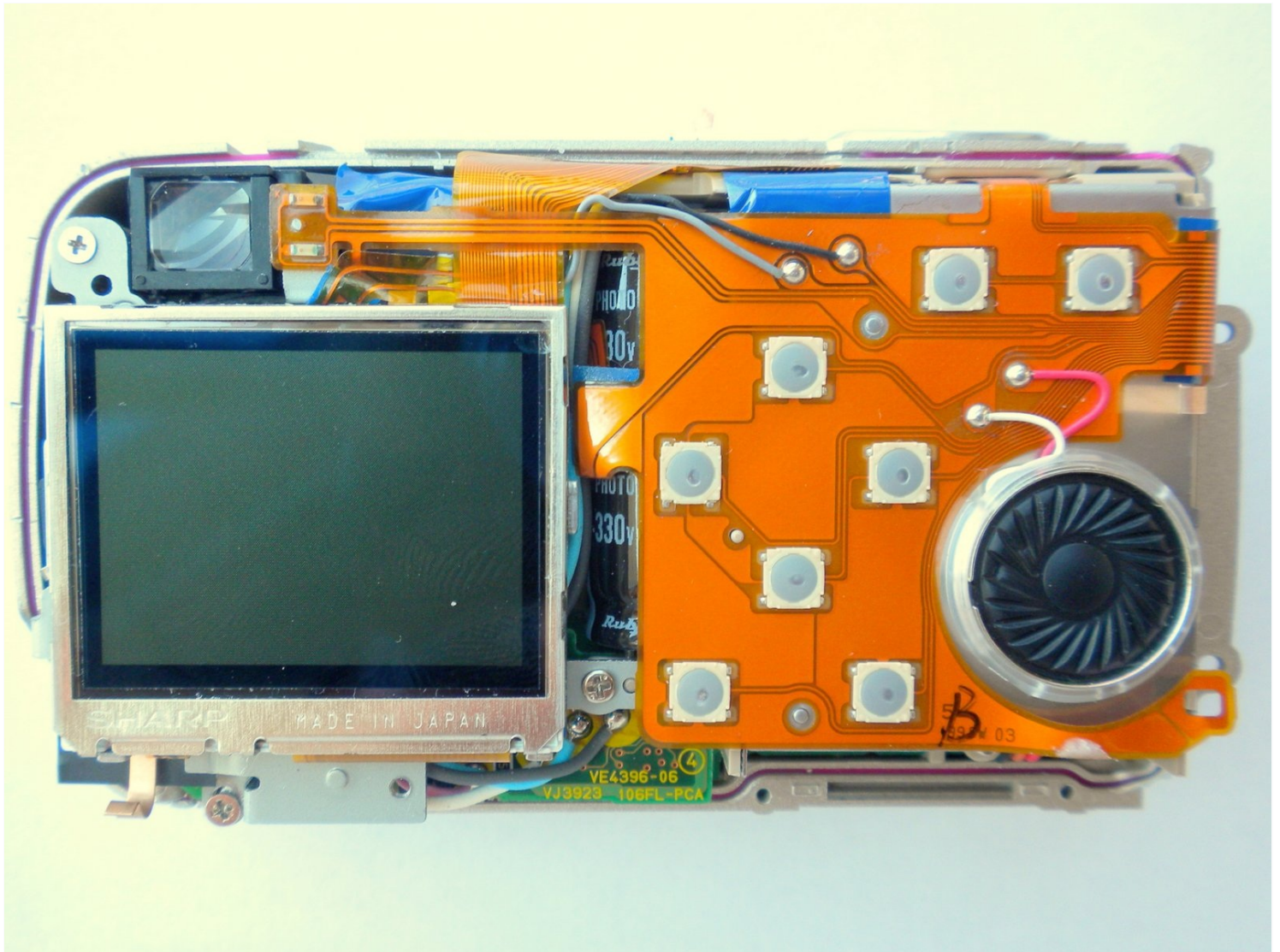




Olympus Stylus 410 Speaker Replacement

Use this guide to replace the Olympus Stylus...

Written By: Gabriela Igel



INTRODUCTION

Use this guide to replace the Olympus Stylus 410 speaker.

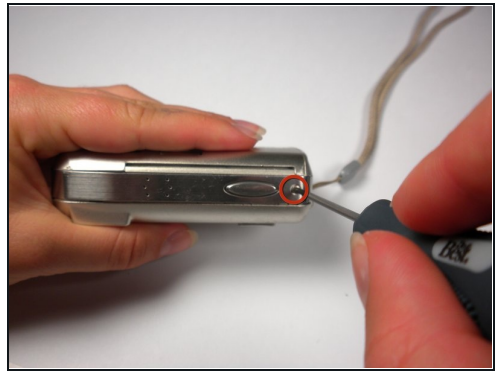
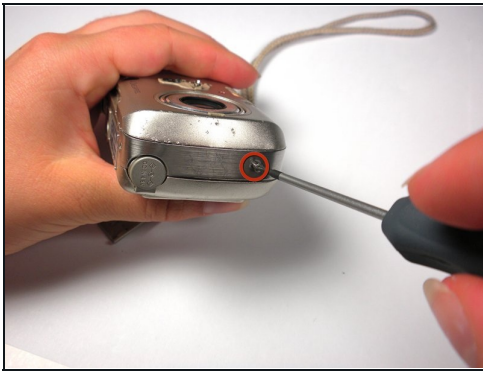
TOOLS:

Phillips #00 Screwdriver (1)

Soldering Workstation (1)

Spudger (1)

Step 1 — Outer Case



- Locate the 3 screws on the outer metal band and remove them with a #00 Phillips screwdriver.

Step 2



- Use the spudger to peel off the outer metal band, starting from the bottom of the camera.

⚠ The metal band is attached to the camera with glue in addition to screws. Be careful not to bend the band when removing it from the camera.

Step 3



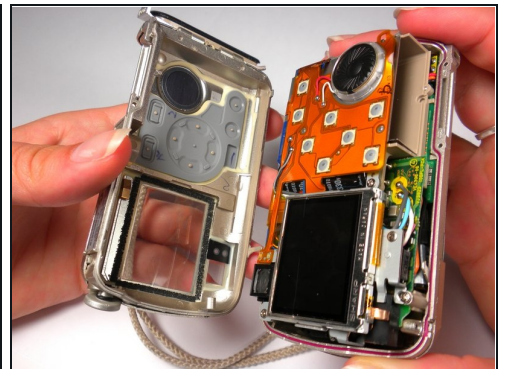
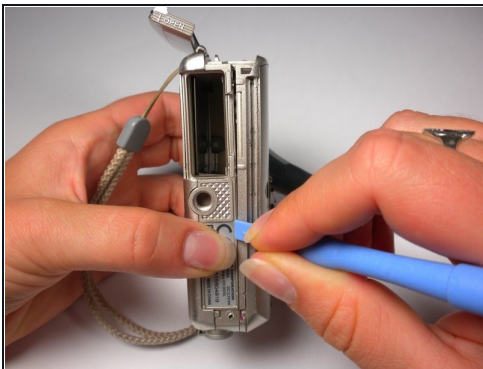
- The shutter button can now be removed. It is not connected to the camera and can be lifted off.

Step 4



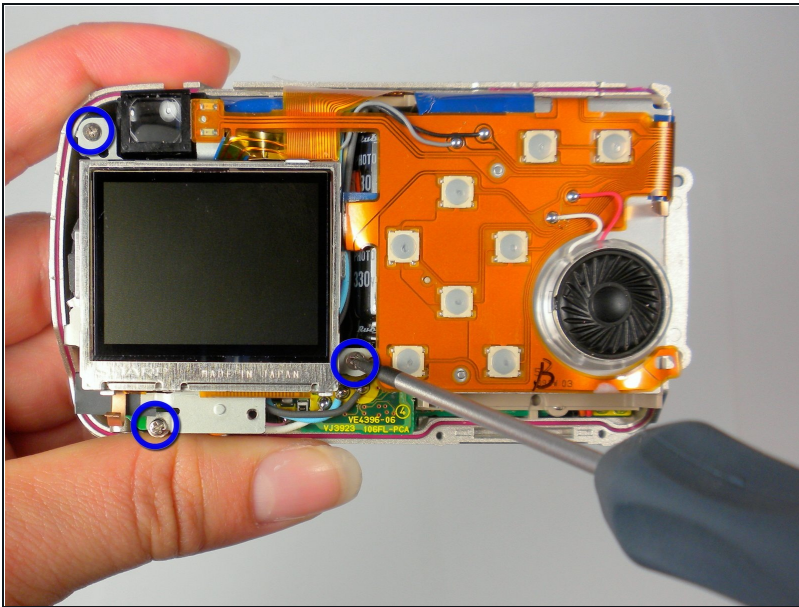
- Remove the memory card.
- Locate and remove the 2 screws using a #00 Phillips screwdriver.

Step 5



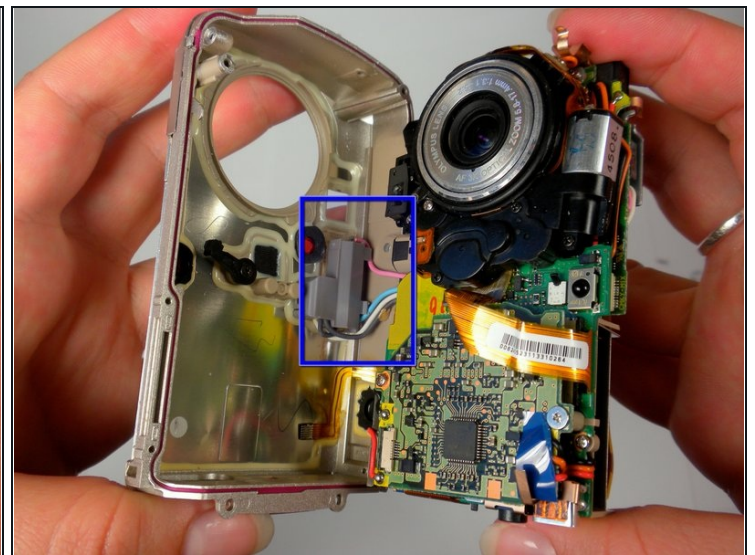
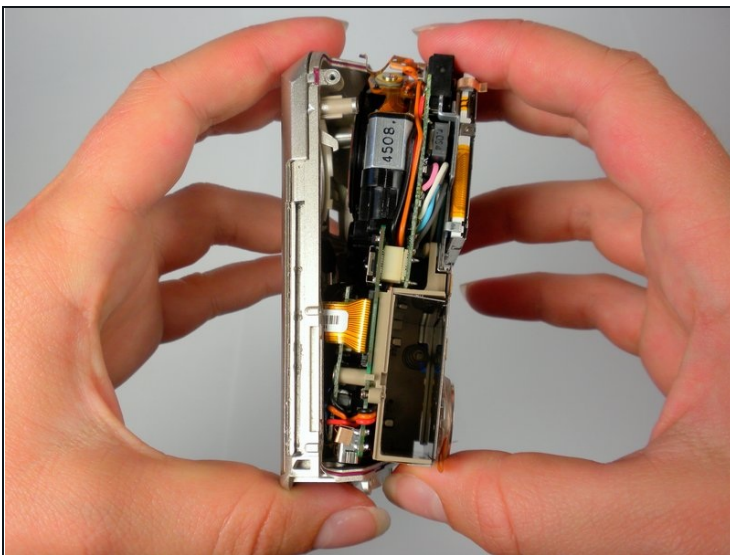
- Use a spudger around the edge of the case to loosen it.
- Carefully wiggle the back case off. This may require a fair amount of force.

Step 6



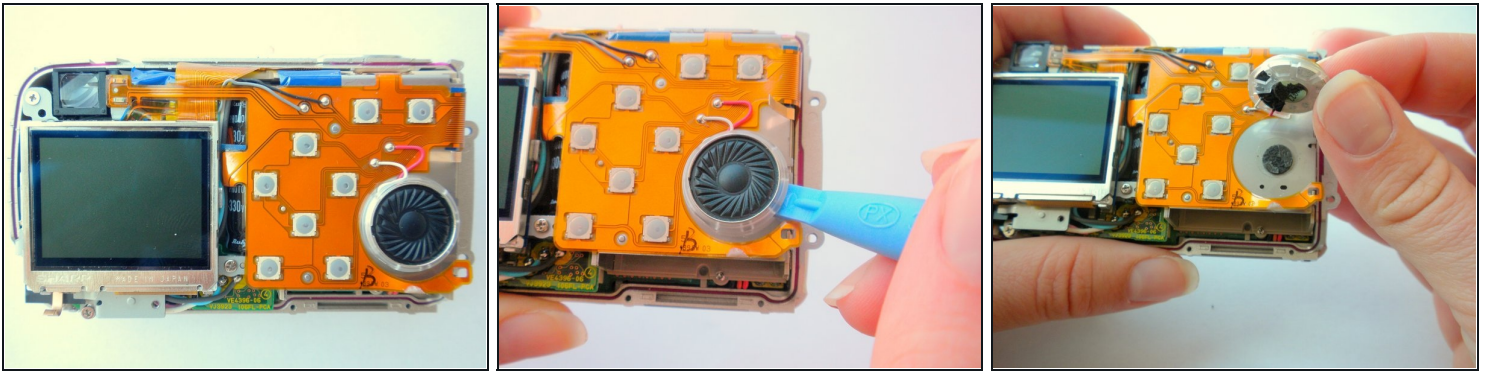
- Locate the 3 internal screws holding on the front of the case. Remove them with a #00 Phillips screwdriver.

Step 7



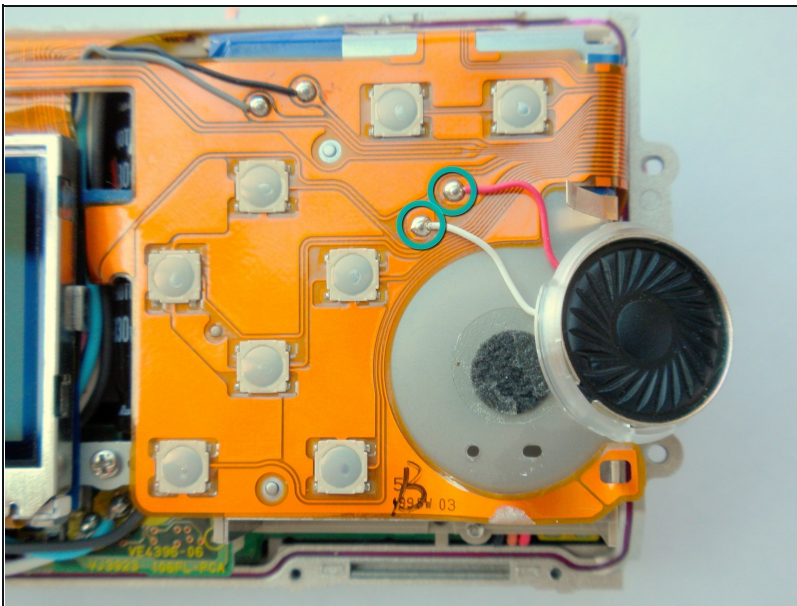
- While grasping the interior and the front case, gently pull until they start to come apart. Some light wiggling may be required.
- Be careful not to completely pull the front case off because it will still be connected with wires.

Step 8 — Speaker



- Use a spudger to remove the speaker. It is attached by a double sided adhesive so it should just peel off.

Step 9



- Un-solder the wires to remove the speaker.

To reassemble your device, follow these instructions in reverse order.