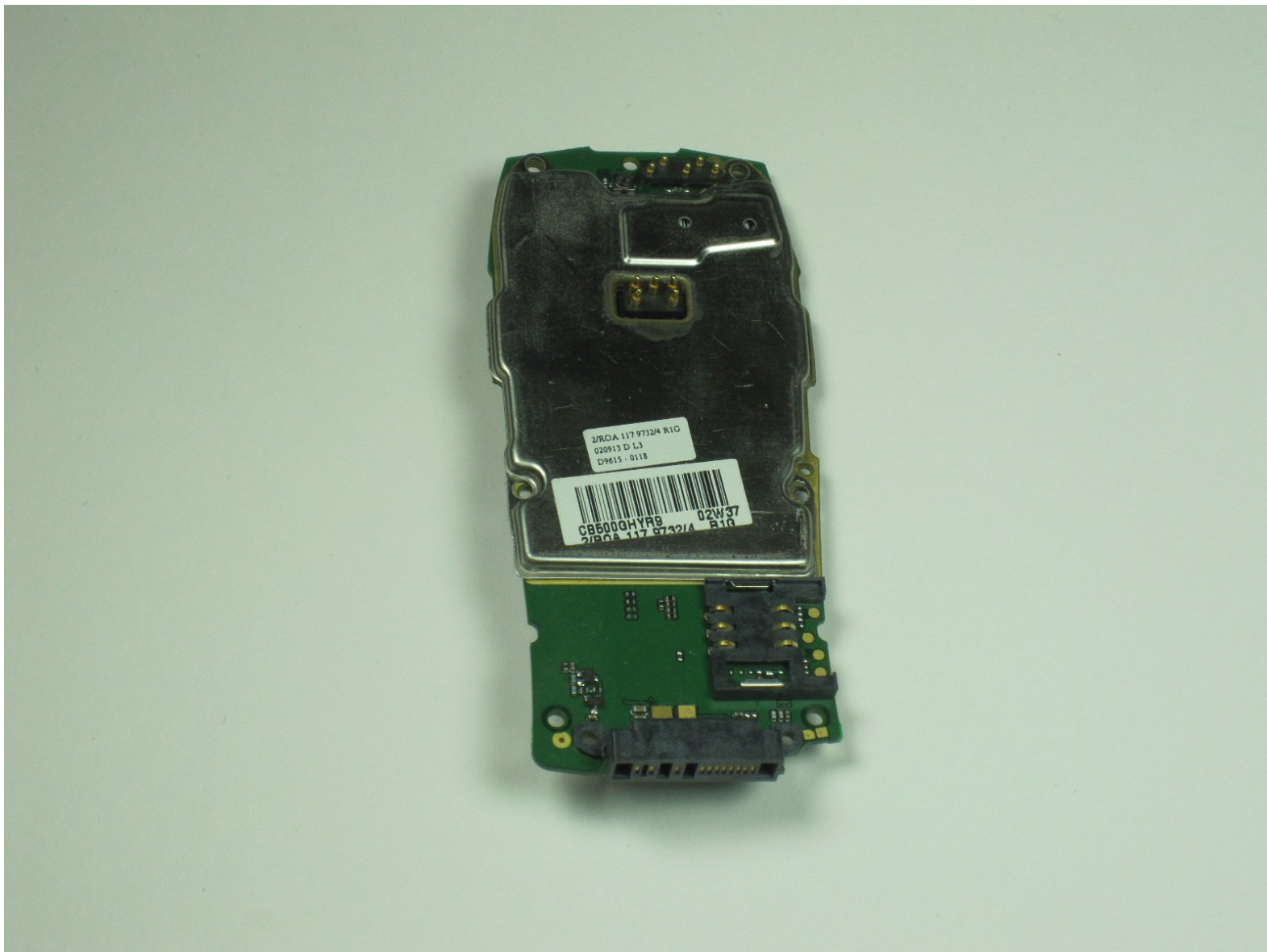




# Sony Ericsson T68i Logic Board Replacement

Written By: Tim Dascomb



---

## INTRODUCTION

This guide will assist you in removing the logic board from your Sony Ericsson T68i.



### TOOLS:

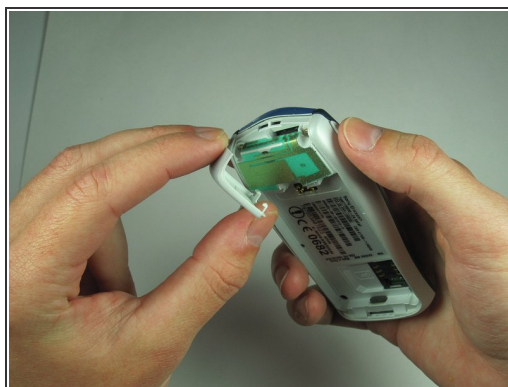
- [iFixit Opening Tools](#) (1)
  - [T6 Torx Screwdriver](#) (1)
-

## Step 1 — Keypad



- Remove the battery from the back.

## Step 2

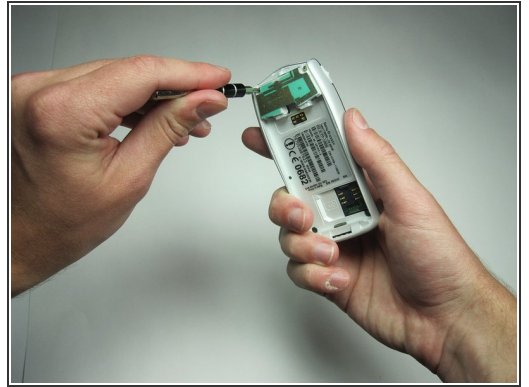
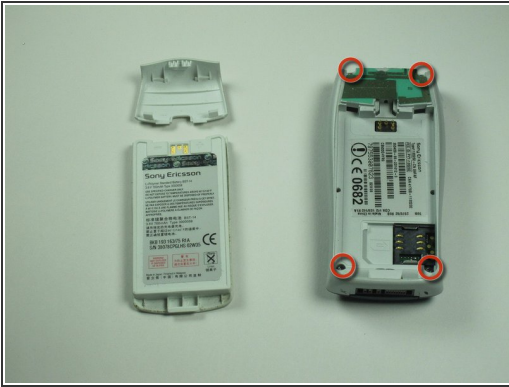


- Pry off the plastic cover from the top with a thin plastic shim, then remove it from the two bottom clips.


⚠ Do not bend it too far down, or else you risk breaking the two bottom clips.



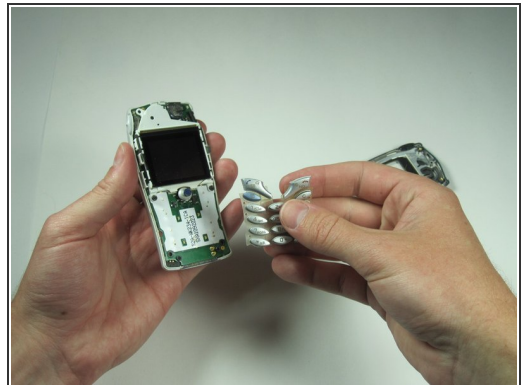
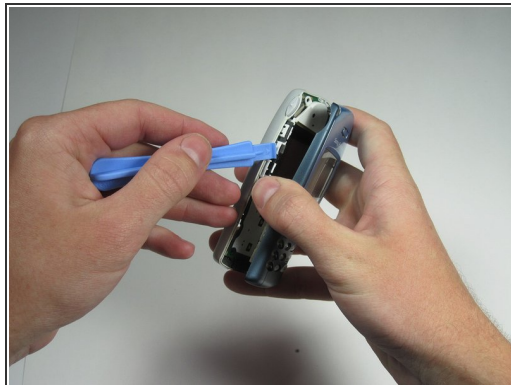
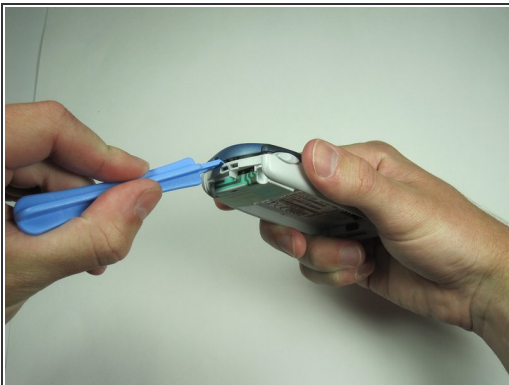
## Step 3



- Unscrew all four Torx T6 screws.

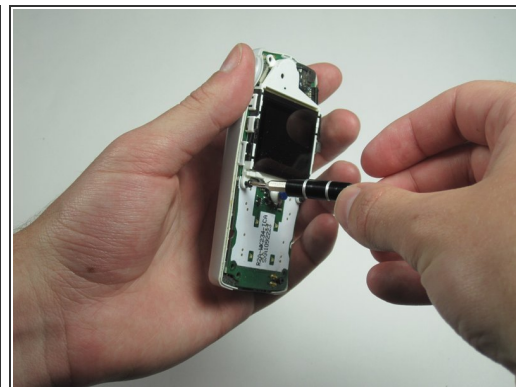
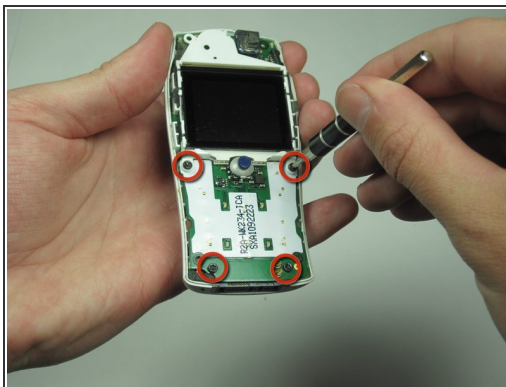
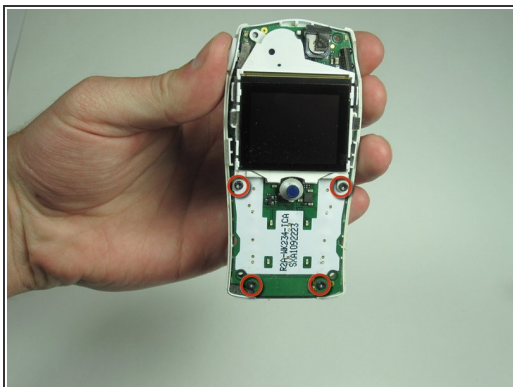
 Keep in a safe place.

## Step 4



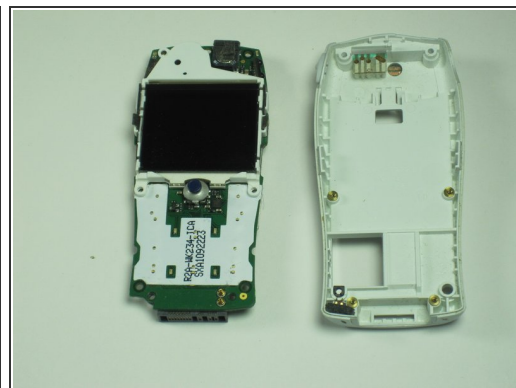
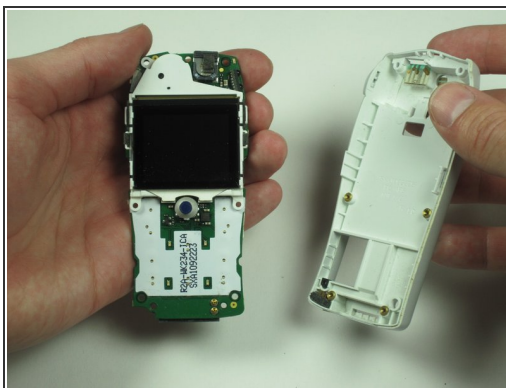
- After removing the screws, the two halves will separate. If not, then pry them gently apart.

## Step 5 — Screen



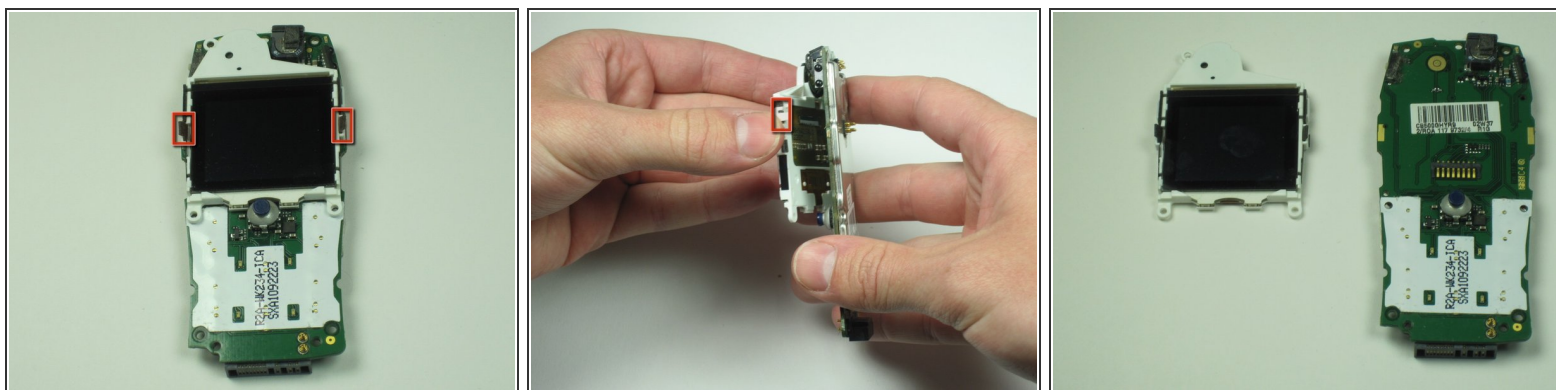
- Remove the circuit board and screen from the device.
- Use your T6 to remove the 4 screws.

## Step 6



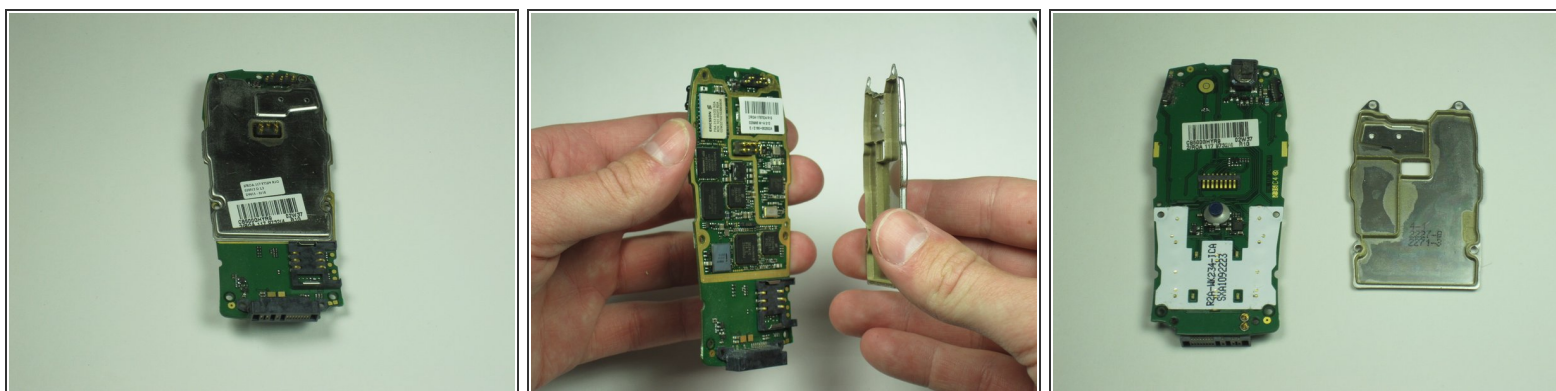
- Remove the board and screen.

## Step 7



- Carefully remove the plastic clips holding the screen on the board.

## Step 8 — Logic Board



- Remove the plate protecting the more delicate processing parts from the logic board.

To reassemble your device, follow these instructions in reverse order.