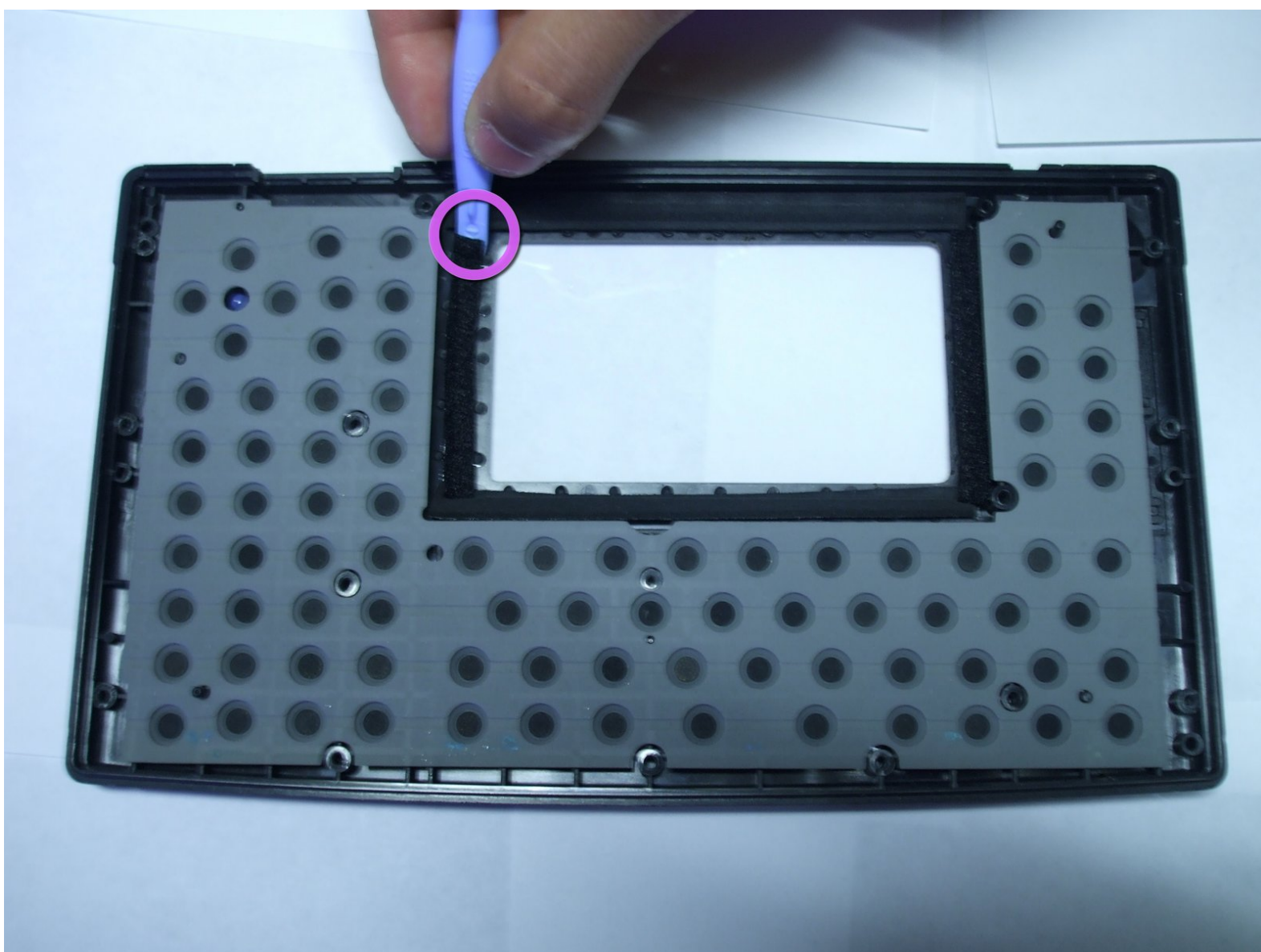




# Texas Instruments TI-92 Screen Cover Replacement

Written By: Daniel Maldonado



---

## INTRODUCTION

In this guide we will show how to access and remove the plastic covering and protecting the LCD display.

---

### TOOLS:

- [Phillips #00 Screwdriver](#) (1)
  - [iFixit Opening Tools](#) (1)
-

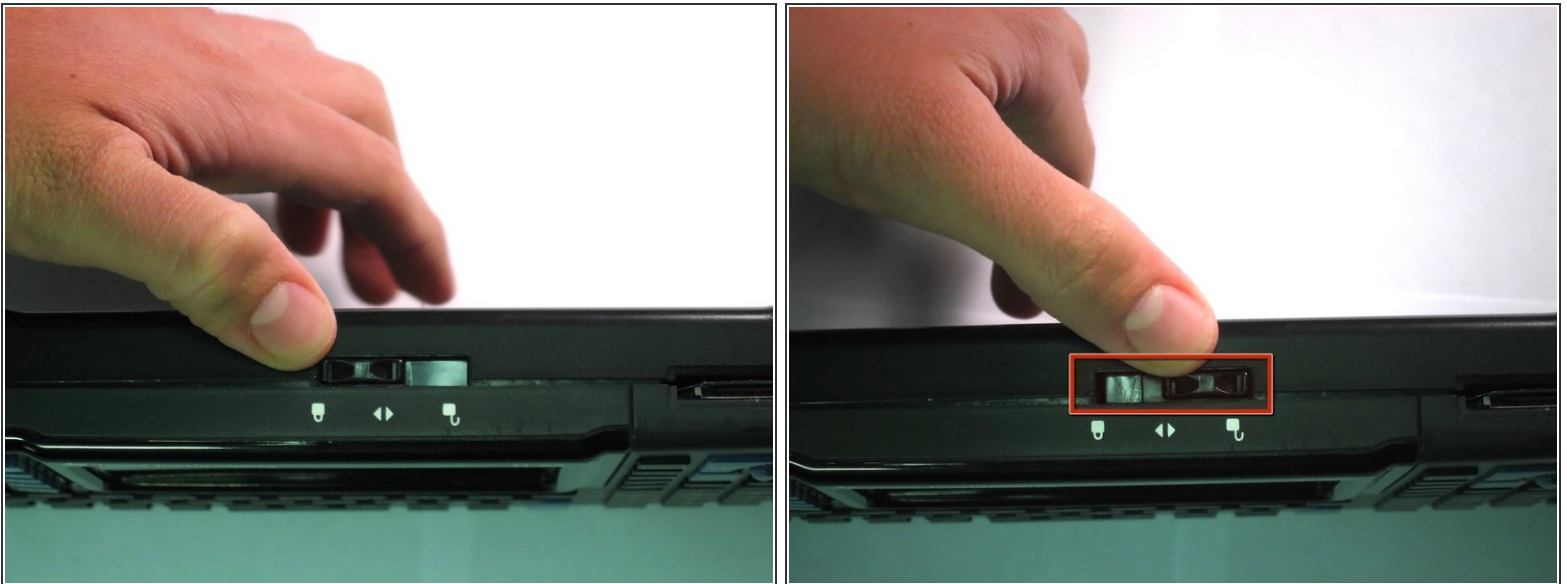
## Step 1 — Back Cover



**i** The first step to any repair operation is to remove the front cover.

- Grab the back of the calculator with one hand and the cover with the other.
- Pull the cover off from one of the sides for easy removal.

## Step 2



- Orientate the calculator with the top facing towards you.
- Slide the locking tab, found on the top part of the calculator, to the unlock position.

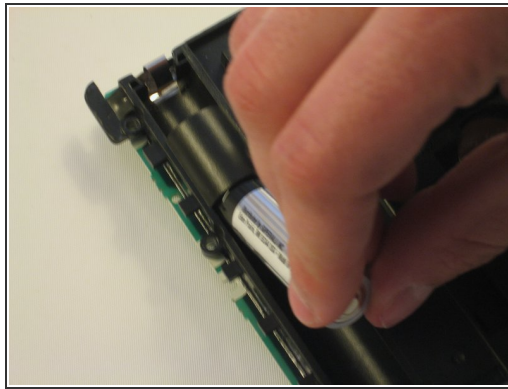
## Step 3



- "Locking Tab"
- To remove the back cover, slide the cover away from the locking tab towards the bottom of the calculator until the cover no longer slides.
- Then with the front of the calculator facing down, pull up on the back cover.
- The calculator should now be orientated with the front facing down, as shown in picture 2.

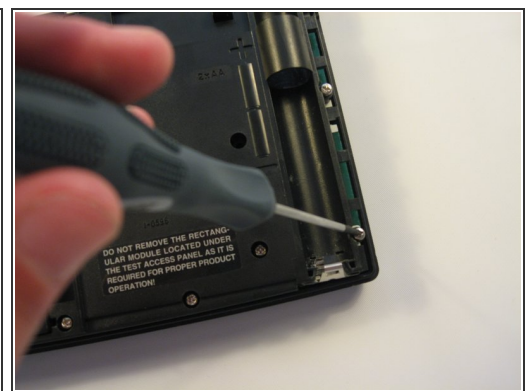
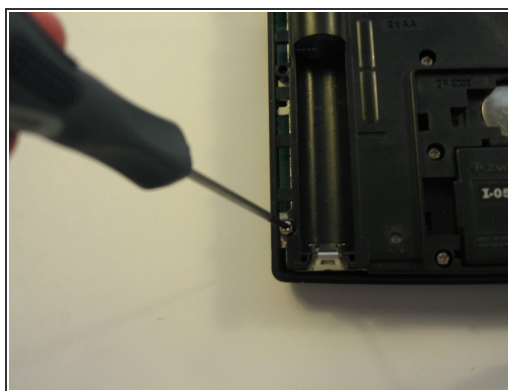
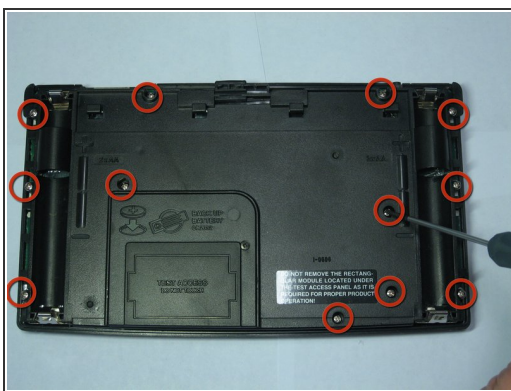


## Step 4 — Batteries



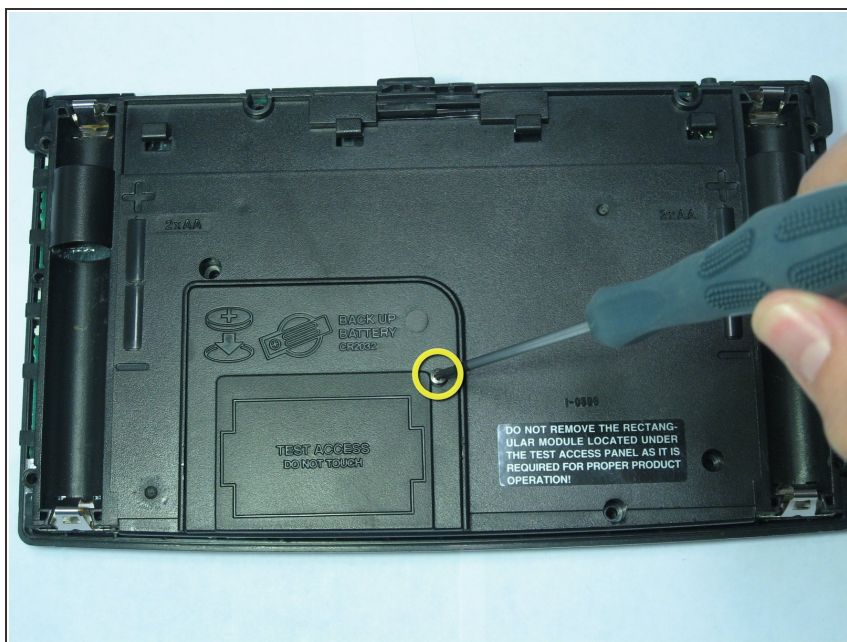
- i The Batteries are now exposed and the calculator is face down with the back towards you.
  - Remove the bottom batteries by pressing the battery towards you while pulling it out from the far end.
- i If you can not do the previous step with your finger try using a flat ended tool such as an Ipod opening tool.
  - After the bottom battery has been removed push or slide the other( *top*) battery towards you until it is fully exposed in the battery slot.
  - Now simply remove the battery.

## Step 5 — Texas Instruments TI-92 Back Case Disassembly



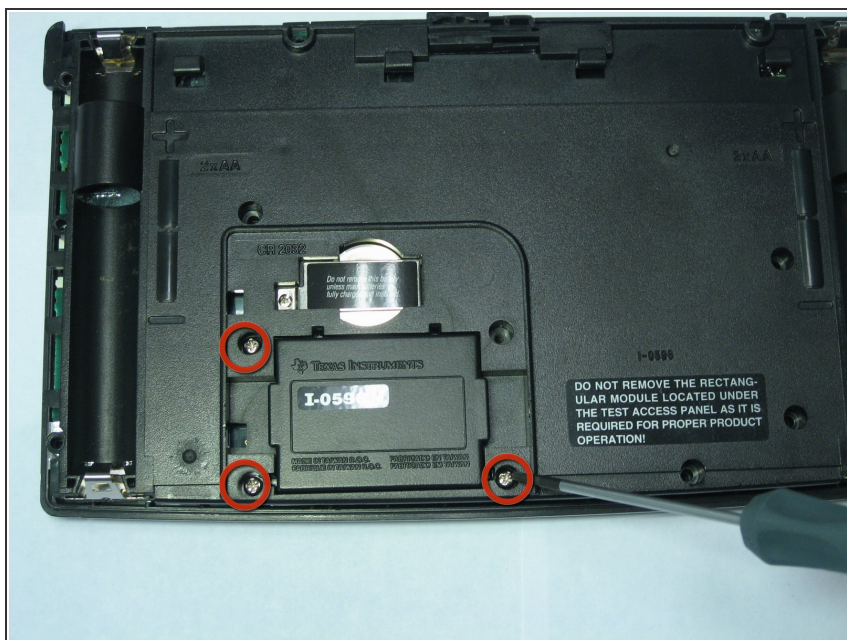
- Using a Philips Screwdriver #00 unscrew the twelve 11.8mm screws shown in the picture and located on the back of the calculator.

## Step 6



- Unscrew the 19mm screw located near center of the back of the calculator.
- Remove the panel being held by the screw.

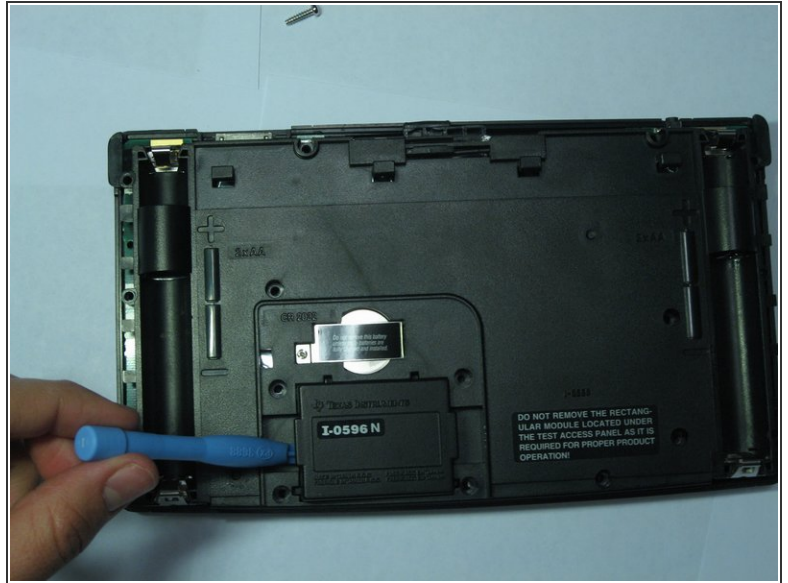
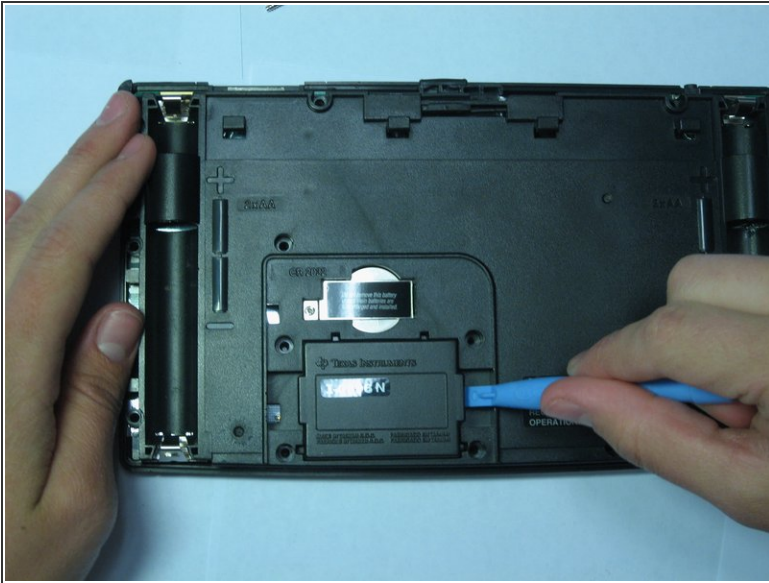
## Step 7



- Using the same Phillips screwdriver, unscrew the remaining three 11.8mm screws.



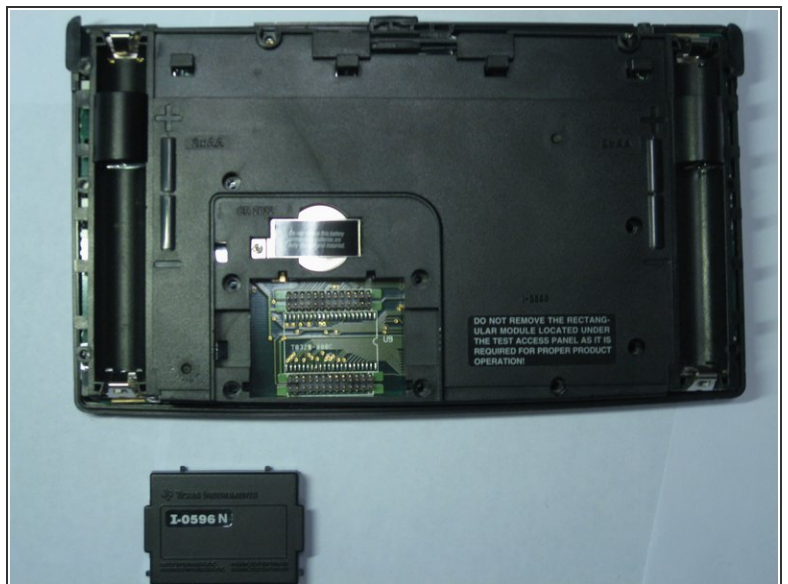
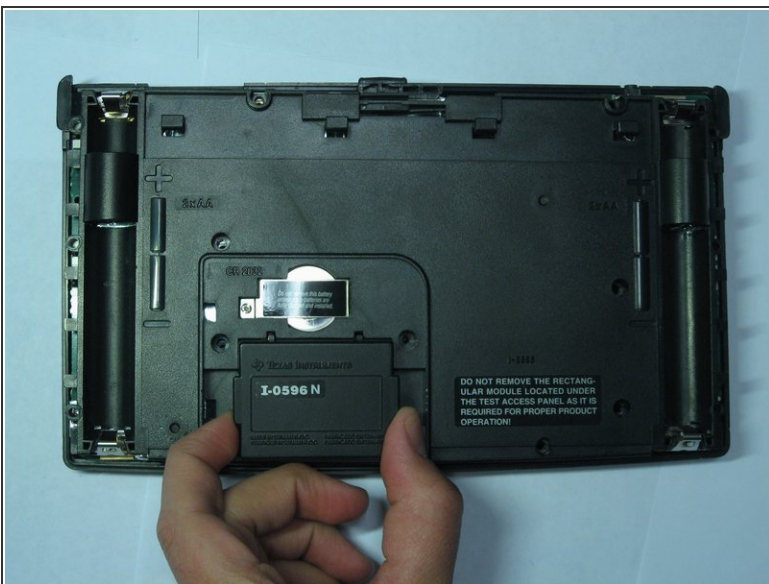
## Step 8



- Using the Ipod Opening Tool pull up on both sides of the rectangular module while keeping the rest of the calculator flat on a surface face down

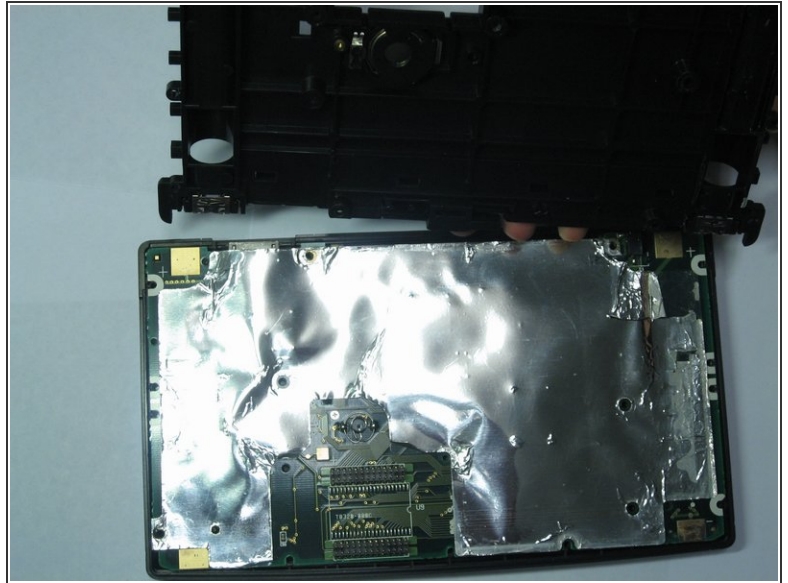
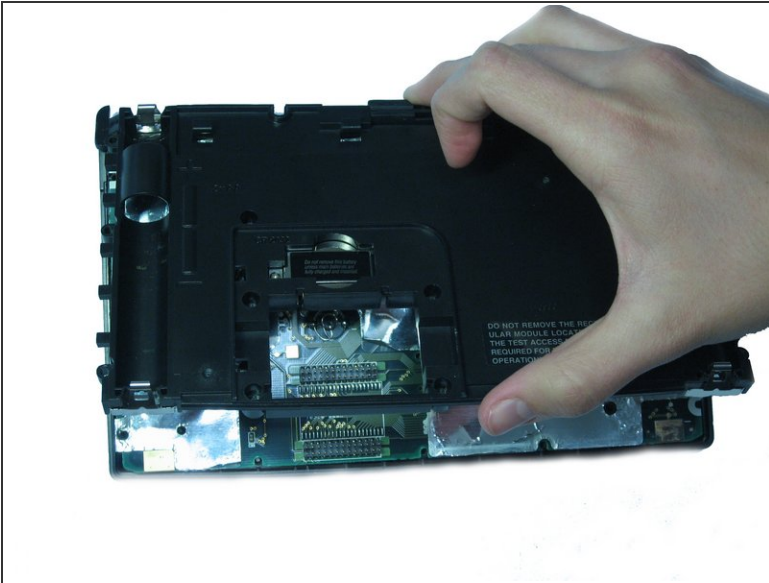
⚠ You may get a lot of resistance from the module. Do not use too much force as you risk damage. Use small amounts of force to work the module out.

## Step 9



- Pull out the rectangular module when it is finally loose enough.

## Step 10

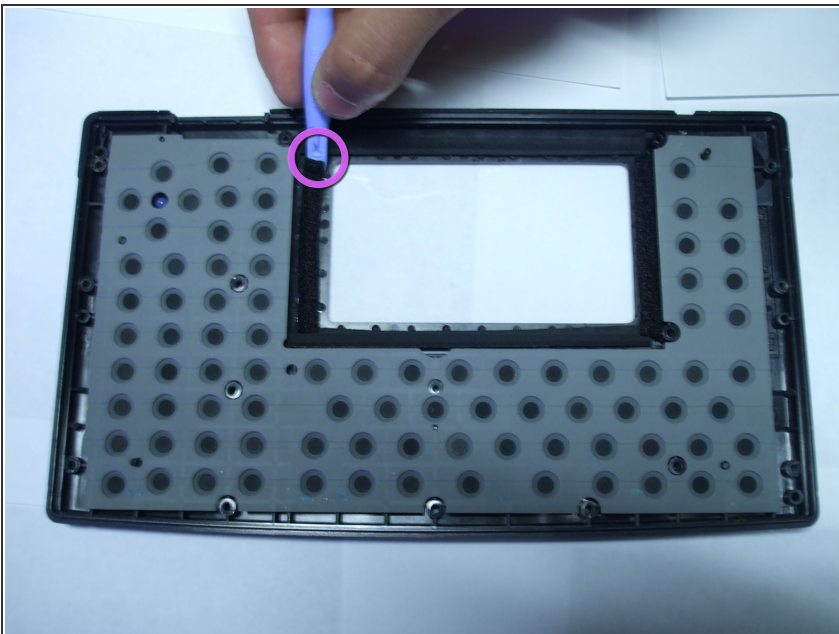


- Now pull up on the back cover of the calculator while holding the rest of it flat on a surface.



Be careful not to tilt the front of the calculator at this point. The keyboard buttons are now unsupported and will fall out of place.

## Step 11 — Screen Cover



- Lift one of the ends of the sticky black strips located around the screen.
- This process will be facilitated by the use of the **Ipod Opening Tools** or a similar tool.

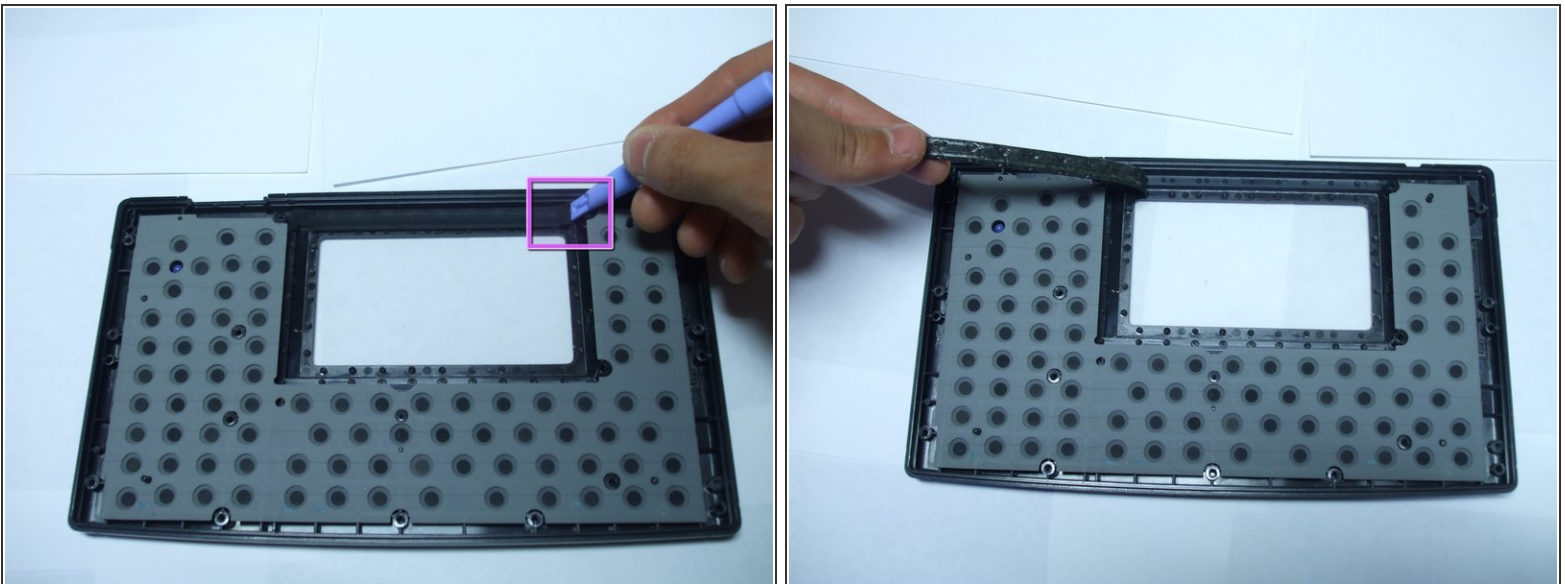


## Step 12



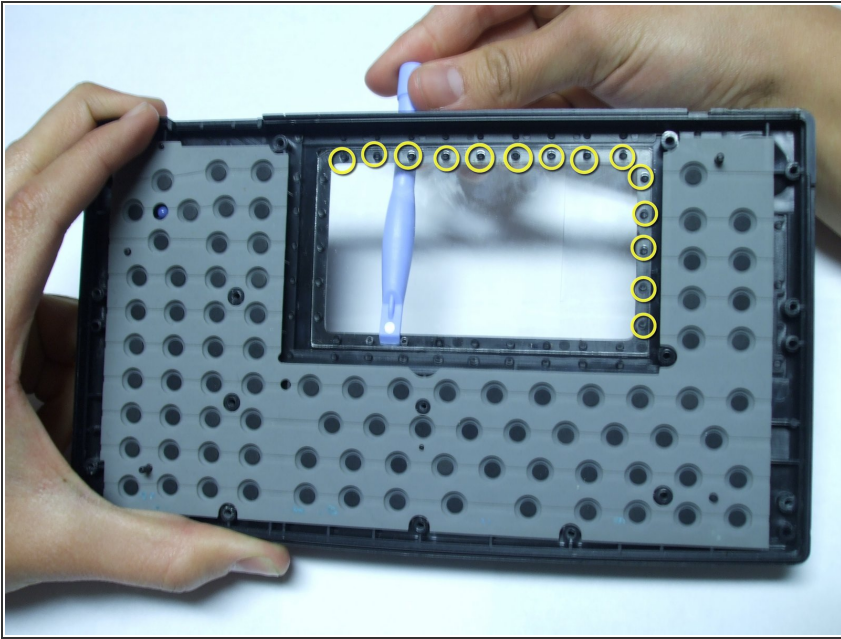
- Start to remove the strips by pulling them outward carefully. Lift one end of the strip and peel it down to the other end.
- If the strips are sticking to each other you do not need to separate them from each other, simply continue pulling outward on the strips around the edges.

## Step 13



- If one of the remaining strips is sticking to the others and can not be easily removed, use a tool such as the Ipod Opening Tool to start pulling the strip up.

## Step 14



- The yellow circles and the spots on the other side of the screen from the circles represent circular tabs holding the plastic screen cover in.
  - Use a flat tool such as the Ipad Opening tool to separate the screen from the tabs.
- ⚠ When removing the screen, the top part of the tabs holding the screen will break in order to allow for movement.
- ⚠ If tilting the panel to remove screen, be careful as the buttons may fall out. To avoid this, keep rubber cover over buttons during operations and keep angle of tilt at a minimum.

To reassemble your device, follow these instructions in reverse order.