



# Disassembling Palm Centro Logic Board

Written By: Chelsea Barackman



---

# INTRODUCTION

This will guide you on how to disassemble the Palm Centro to get to the logic board.

---



## TOOLS:

- [iFixit Opening Tool](#) (1)
  - [T5 Torx Screwdriver](#) (1)
-

## Step 1 — Disassembling Palm Centro Battery



- Press and slide open the battery cover.

## Step 2



**⚠ Caution: Turn cell phone off before removing battery!**

- Press battery to the right.
- Then lift up battery pack to remove.



## Step 3



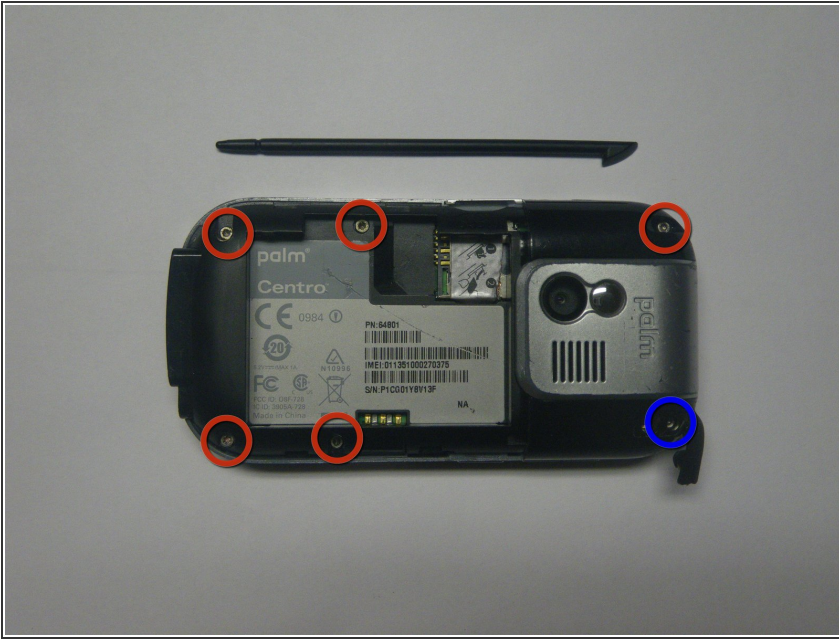
- Phone with battery removed

## Step 4 — Back Housing



- Remove the touchpad pen from the top left corner on the back to reveal the last of 6 screws to be removed.

## Step 5



- Lift the rubber cap at the top right to reveal the sixth screw.

**⚠ Caution:** There is a small Palm sticker under the rubber cap. Tampering with or removing this sticker will void your warranty!

- Remove the six screws using the T5 Torx screwdriver.

## Step 6



- Remove the SIM card so housing can be separated.

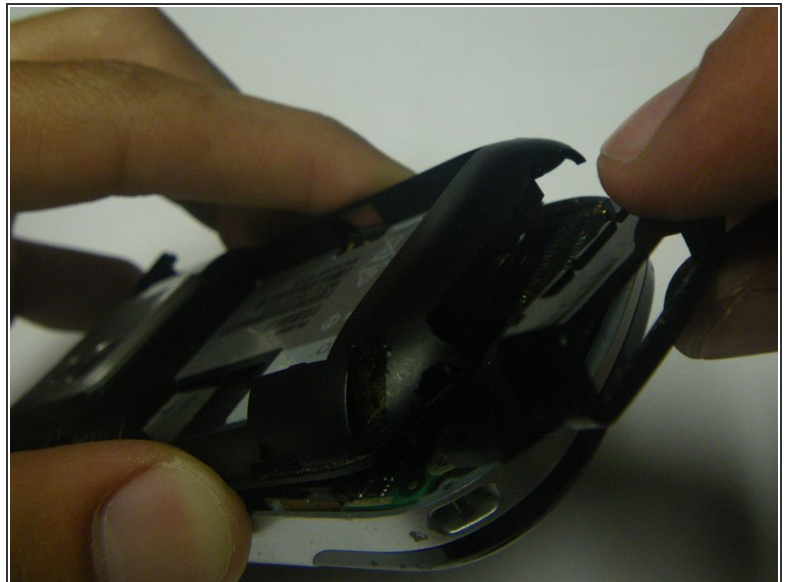


## Step 7



- Use a plastic pry tool to separate the bottom of the case to remove the small plastic insert.

## Step 8



- Remove the small plastic insert at the bottom of the phone.

## Step 9



- Continue with plastic pry tool all the way around the phone to remove the back housing.

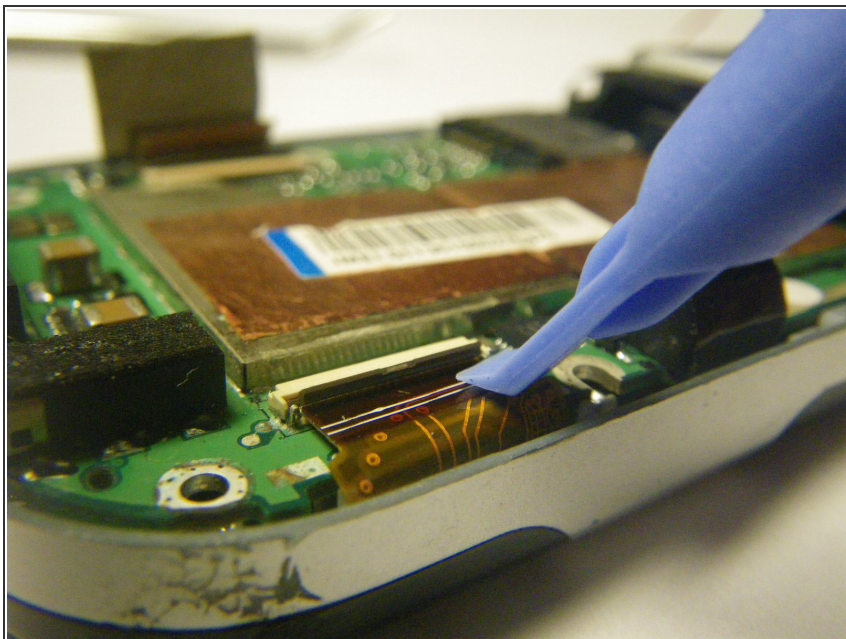
## Step 10 — Logic Board



- Carefully peel back the tape holding the speaker (left) and keyboard (right) connection tabs in place.



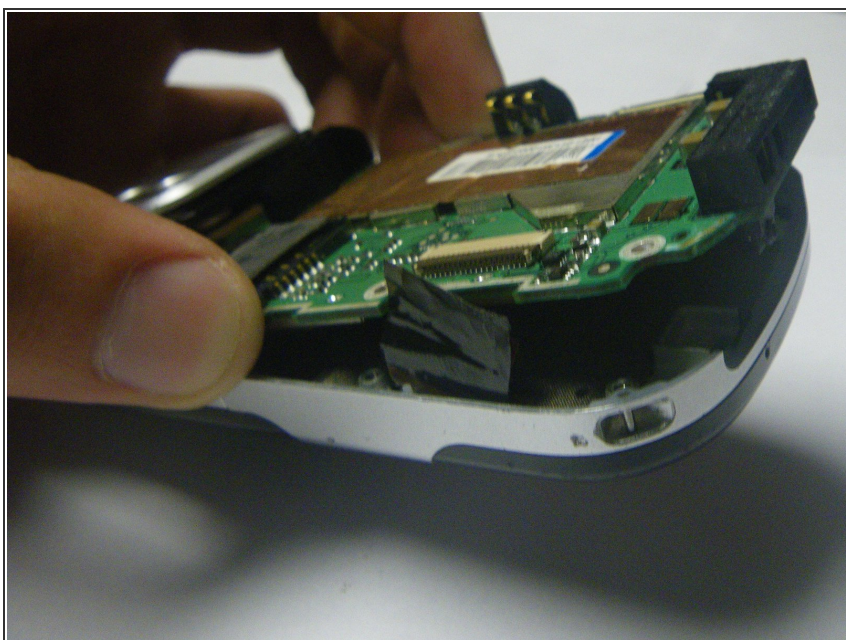
## Step 11



- Using the plastic prying tool, lift the tabs and carefully pull the contact connections out on both sides.

⚠ Be very careful, these electronics are delicate!

## Step 12



- Separate the logic board from the case by lifting and pulling out the bottom.

To reassemble your device, follow these instructions in reverse order.