



# Disassembling Samsung SPH-A760 Logic Board

Written By: David



---

# INTRODUCTION

How to get to and remove the logic board



## TOOLS:

- [Phillips #00 Screwdriver](#) (1)
  - [Spudger](#) (1)
-



## Step 1 — Disassembling Samsung SPH-A760 Battery



- Push open the latch and remove the battery.

## Step 2 — Disassembling Samsung SPH-A760 Antenna



- Twist off the antenna.
- Pop off the transparent cylinder.

## Step 3 — Logic Board



- Remove the five screws as shown.

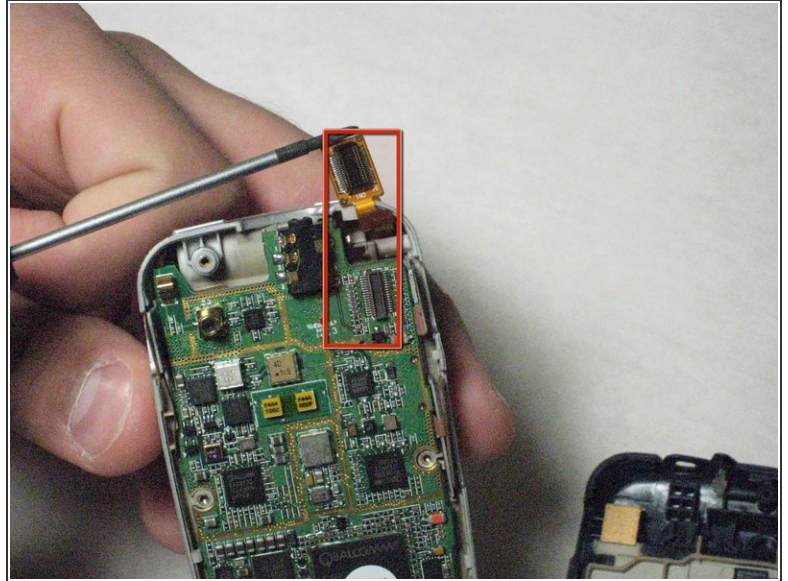
## Step 4



- Carefully pry the back plate off.

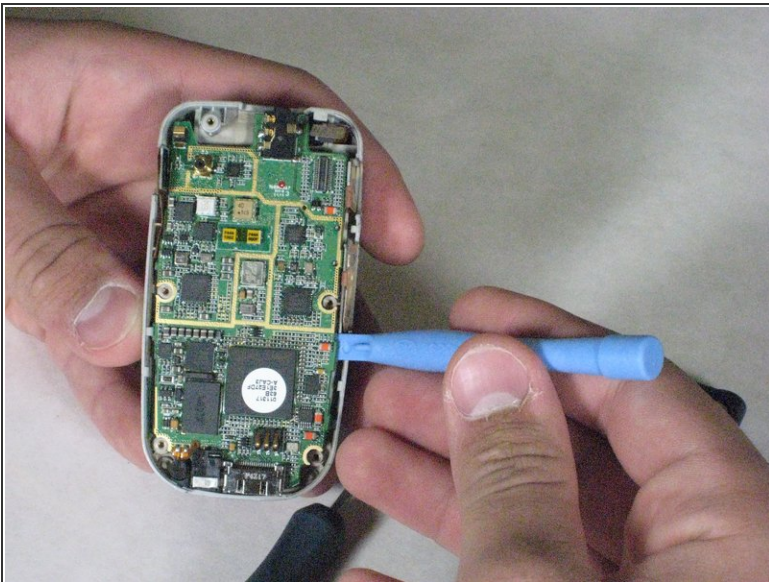


## Step 5



- Carefully detach golden screen connector.

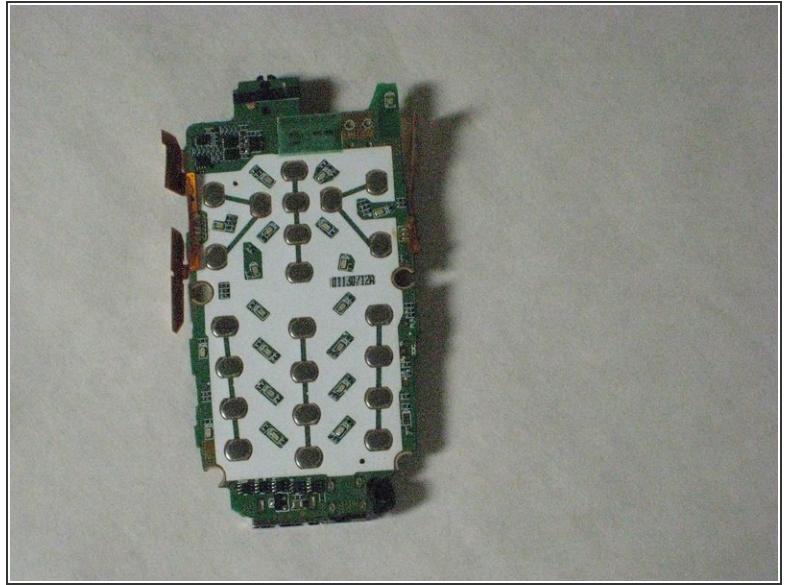
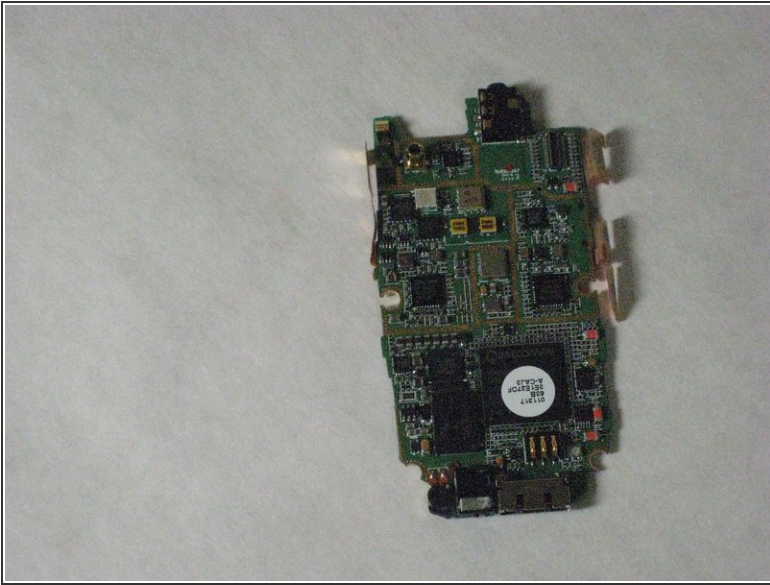
## Step 6



- Pop out the logic board with spudger.

⚠ Caution: Do not touch with bare hands, use tweezers or wash hands before contact.

## Step 7



- Place the logic board on a clean tray.

To reassemble your device, follow these instructions in reverse order.