



TomTom ONE Motherboard Replacement

Overtime the motherboard's wires may come apart...

Written By: Becca



INTRODUCTION

Overtime the motherboard's wires may come apart and make the device stop working. This guide will show you how to replace the motherboard with a new one.

TOOLS:

Spudger (1)

TR7 Torx Security Screwdriver (1)

TR9 Torx Security Screwdriver (1)

Step 1 — Motherboard



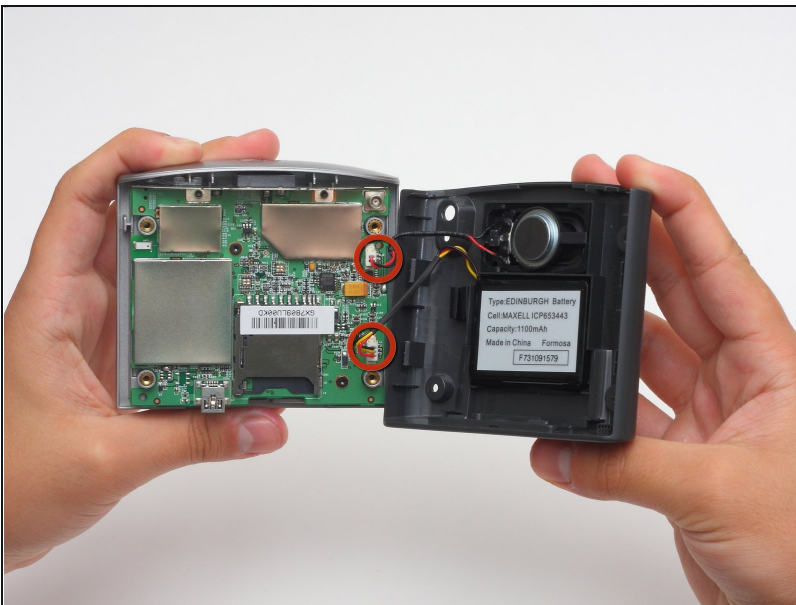
- Use a T-9 Torx screwdriver to unscrew the four screws on the back cover.

Step 2



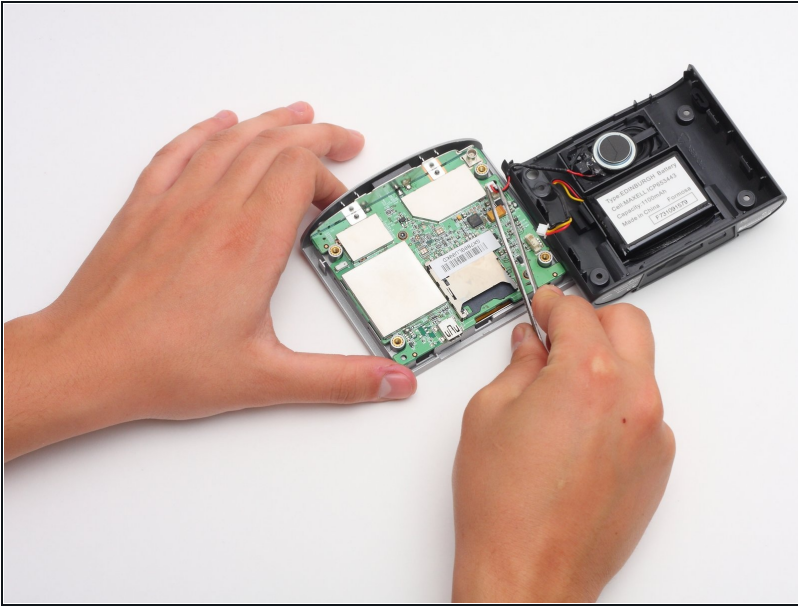
- Using the spudger, gently pry apart the back case from the front case. It is easier to start on a side and work your way around the device.

Step 3



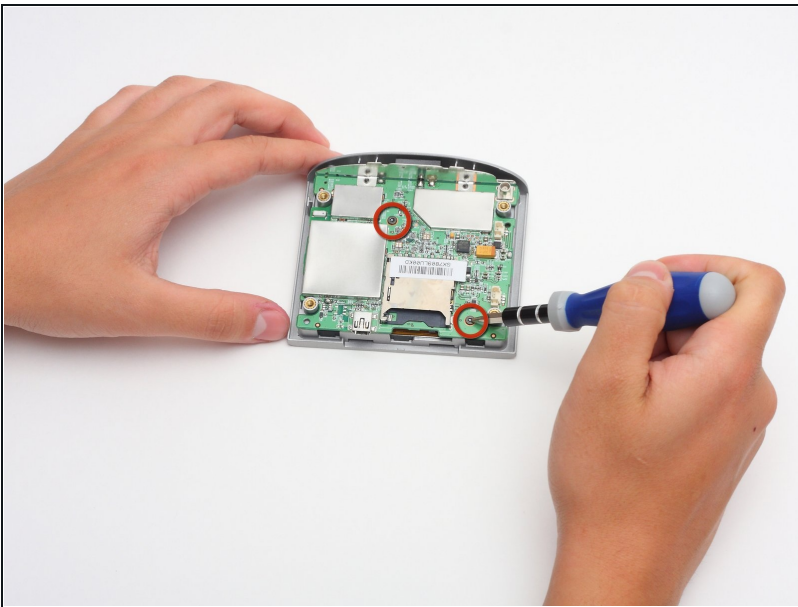
⚠ Carefully pull the back cover apart from the front cover. Be careful not to pull too hard because there are two sets of wires connecting the device.

Step 4



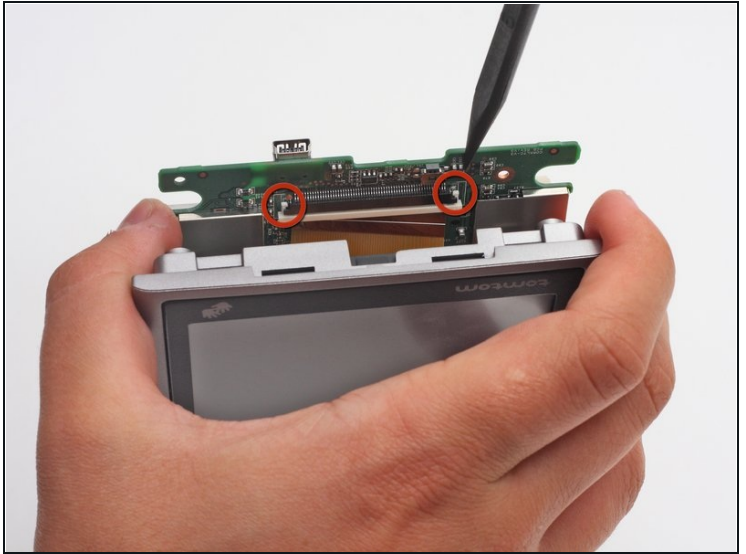
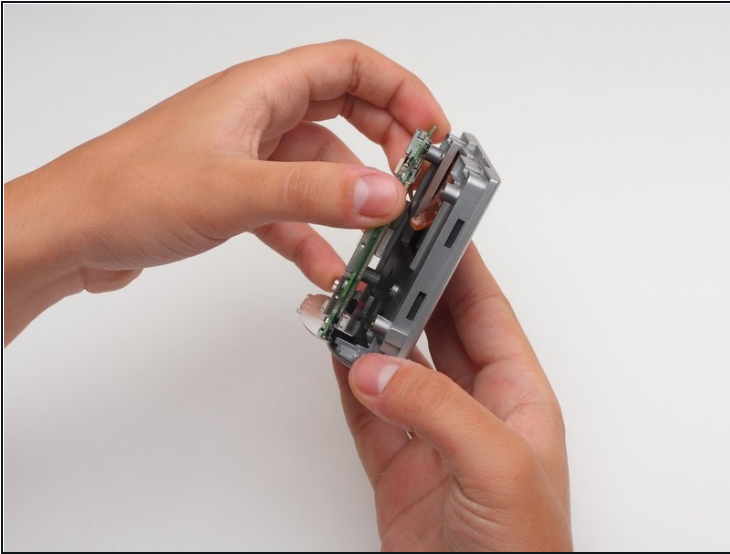
- Once the two covers are separated, use [tweezers](#), or even your fingers, to gently disconnect the two sets of wires that are connected to the motherboard from the back cover.

Step 5



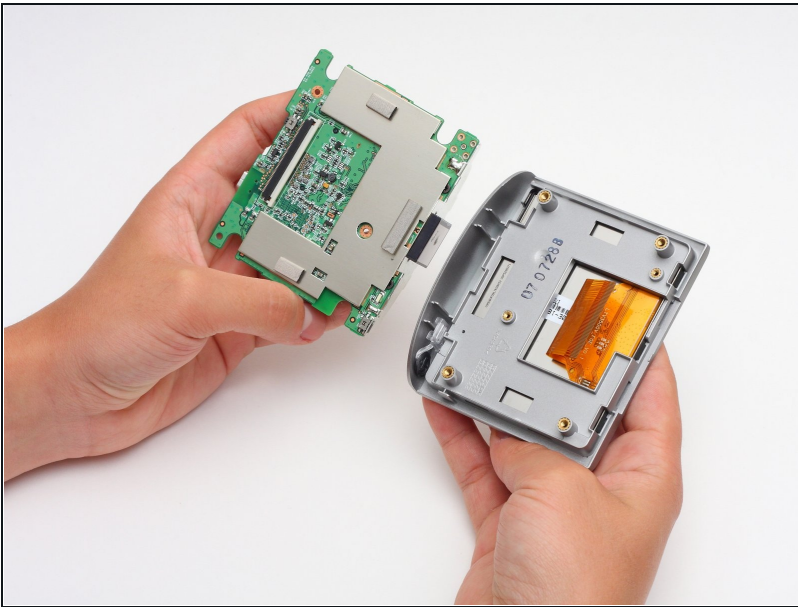
- Next, you must remove the motherboard from the front screen.
- Use a Torx T-7 screwdriver to unscrew the two screws.

Step 6



- Before you can separate the motherboard from the front cover, you must disconnect the wire connecting the two.
- To do so, you must use the back end of the spudger to push out the two white tabs connected to the wire, that holds the motherboard and front cover together.

Step 7



- The motherboard is now disconnected from the front assembly

To reassemble your device, follow these instructions in reverse order.