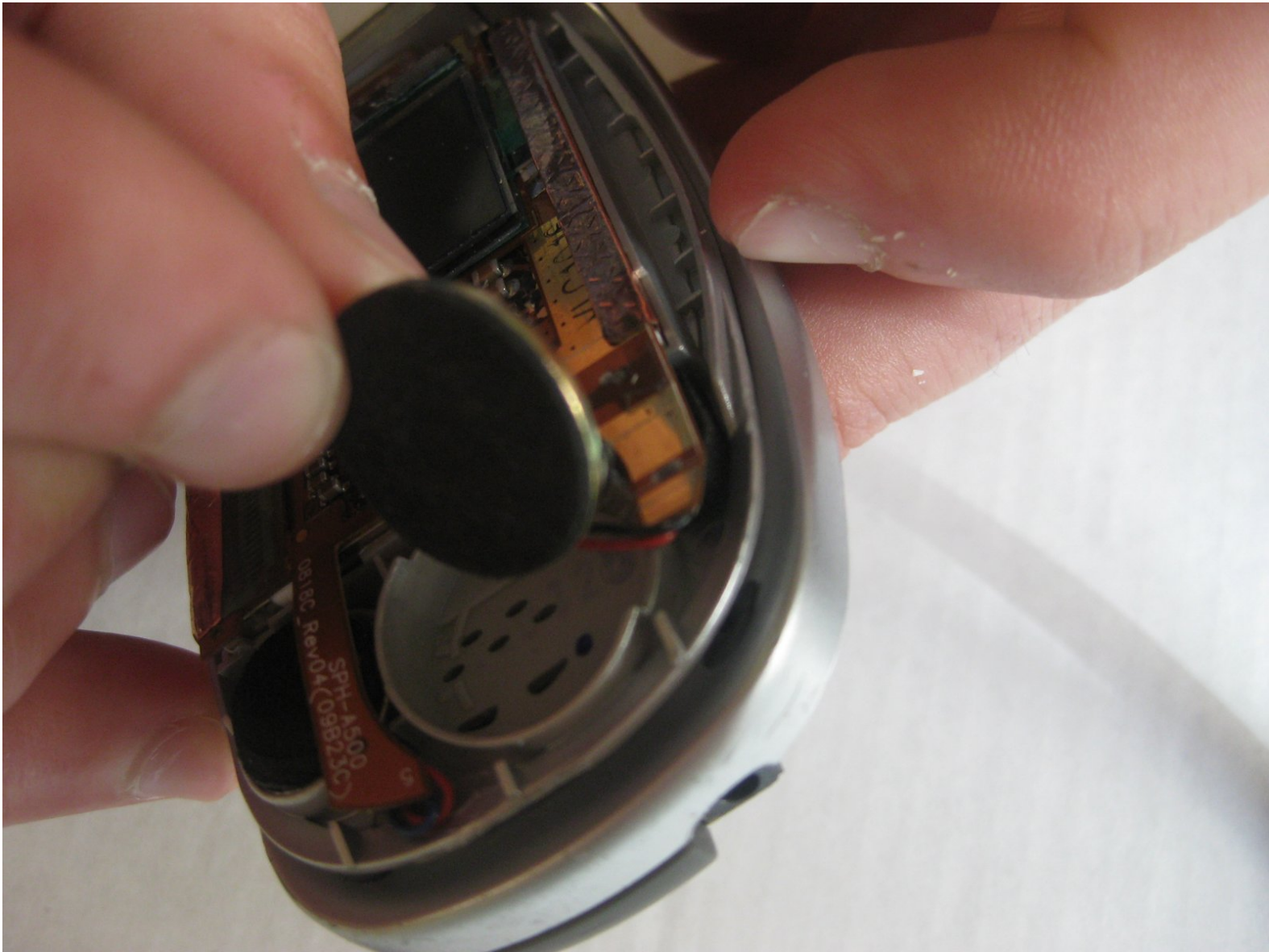




Samsung SPH-A500 Speaker Replacement

Repair guide on how to replace a Speaker on a...

Written By: Nick Dominikovic



INTRODUCTION

Repair guide on how to replace a Speaker on a Samsung SPH-A500 cell phone.



TOOLS:

- [Phillips #0 Screwdriver](#) (1)
 - [Soldering Workstation](#) (1)
-

Step 1 — Speaker



- Flip open the phone, remove the two rubber covers under the LCD screen.
- Remove the two screws using a small Philips screwdriver.

Step 2



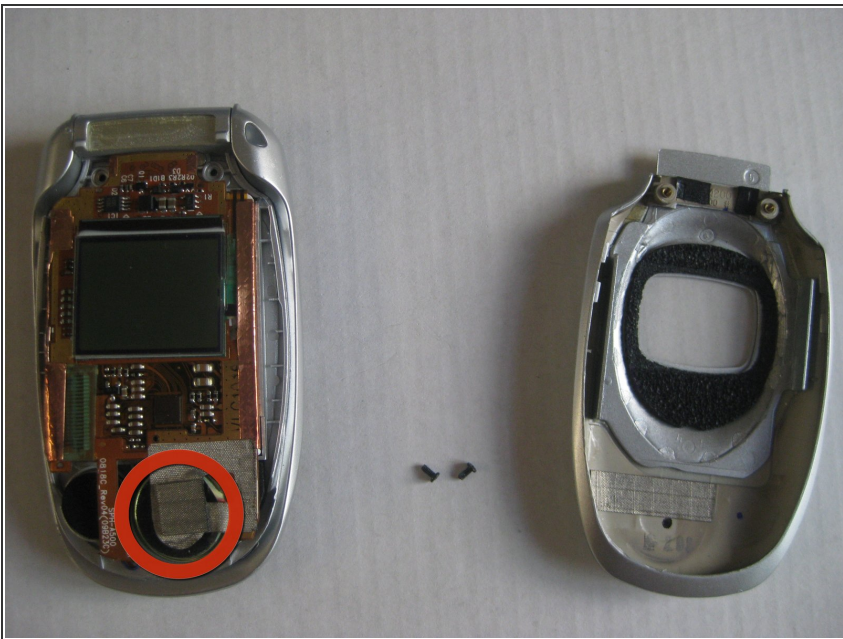
- Using an Ipod opening tool or your finger nails, pry open the back cover of the LCD screen.
- ⓘ Note: Some force may be required.

Step 3



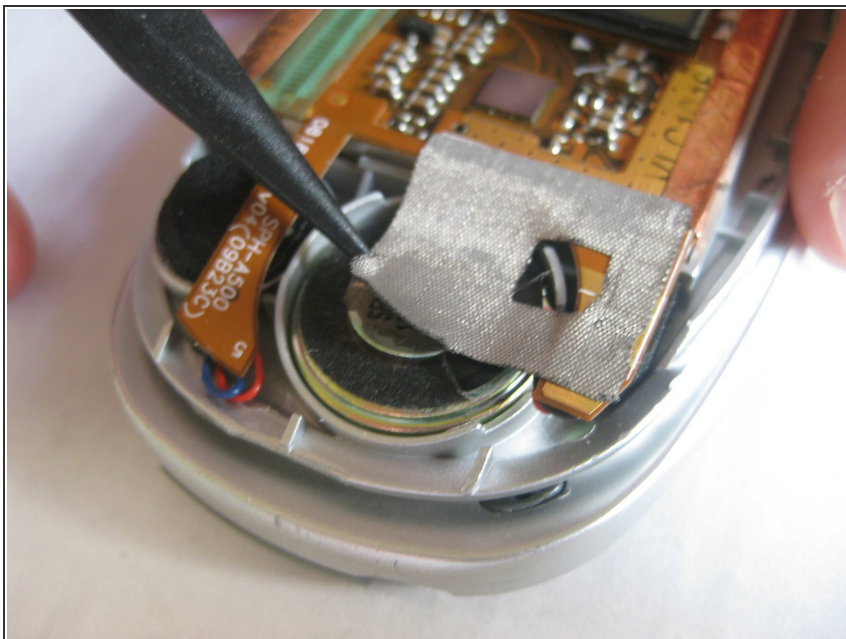
- Completely separate the back cover from the rest of the phone.
- Close the phone.

Step 4



- The speaker is covered with silver tape on the bottom of the logic board.

Step 5



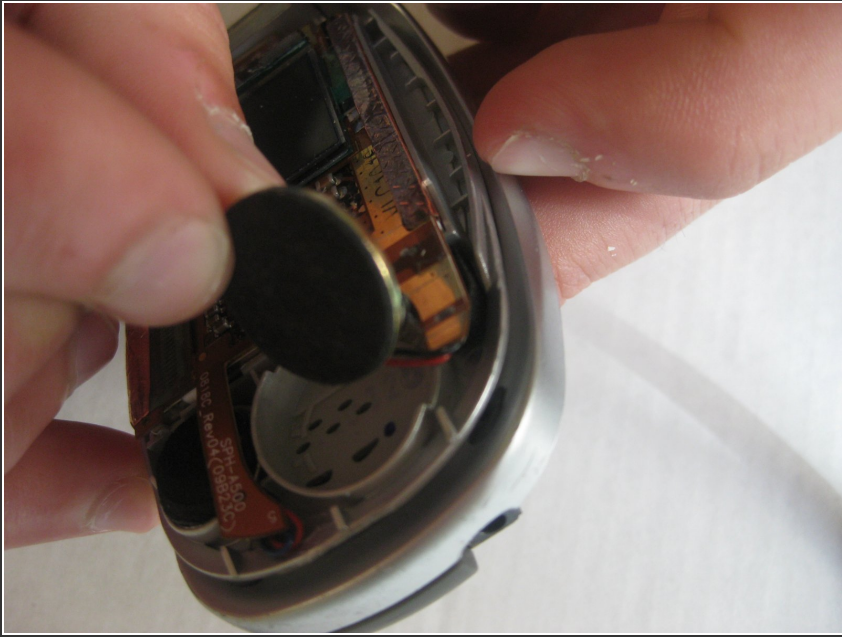
- Remove the silver tape that is covering the speaker.

Step 6



- Remove the speaker.
- i** Note: In order to completely remove the speaker you must disconnect the wires, which will require a soldering iron to reattach the new speaker.

Step 7



- Attach the new speaker using a soldering iron.
- Put the speaker back to it's original position and place the silver tape over it.

To reassemble your device, follow these instructions in reverse order.