



Gateway NV52 Keyboard Replacement

This guide will teach you how to replace the keyboard.

Written By: Tim En



INTRODUCTION

The battery pack will have to be taken out, so there can be access to the keyboard.



TOOLS:

- [Phillips #0 Screwdriver](#) (1)
 - [Heavy-Duty Spudger](#) (1)
-

Step 1 — Battery



- Turn the laptop on its backside with the stickers and barcode facing you.
- Locate the latches on the top left corner.

Step 2



- In order to unlock the battery, slide the vertical latch downward where it indicates the unlocking icon.

Step 3



- Slide the horizontal latch to the right to pop open the battery pack.

Step 4 — Keyboard




- Remove the five identical 9/32" Phillips Screws located under the battery and both upper corners using the Phillips #0 Screwdriver.

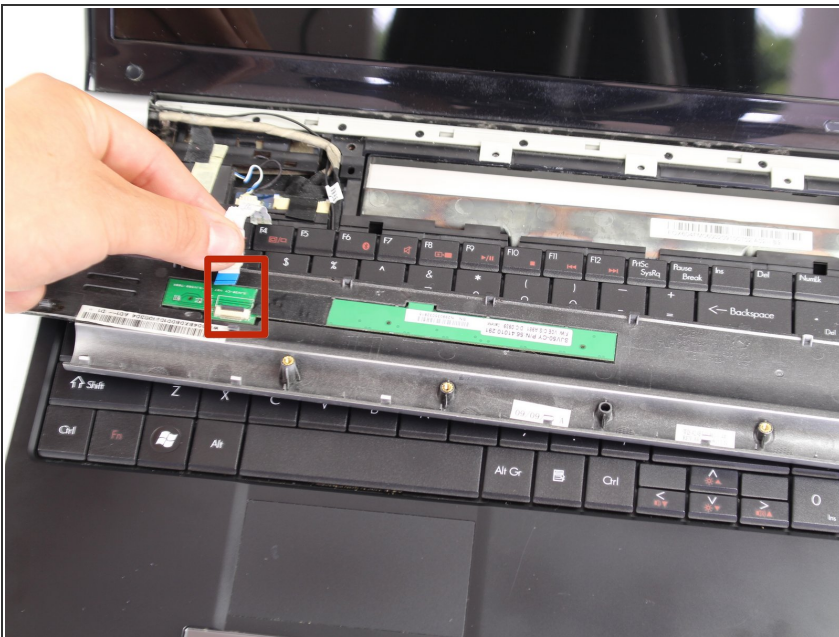
Step 5



- Flip the Device so the keyboard and display screen are faced upright.
- Lift up the media button board cover using the Heavy Duty Spudger. Apply a minimum amount of upward force to the media button board cover at the right bottom corner. Starting from the right, continuously lift the cover to the left edge until completely separated.

 Do not lift up the media button board cover too much, it's still connected to the motherboard. Set the media button board cover upside down on the keyboard.

Step 6



- Disconnect the dark colored locking tab by pulling at a 90 degree angle, and then slightly pull away the ribbon from the locking tab.

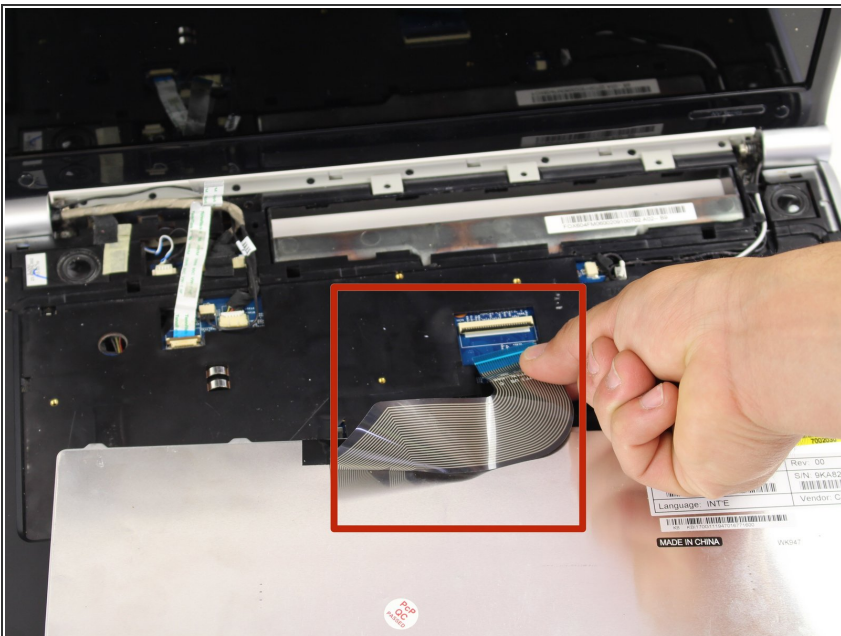
Step 7



- Lift up the keyboard with the Spudger. Rotate the keyboard until its faced down on top of its base.

⚠ The keyboard is still connected to the access keyboard connector, so do not attempt to detach the keyboard from the laptop, yet.

Step 8



- Disconnect the brown-colored locking tab by pulling at a 90 degree angle and slightly pulling away from the locking tab.

⚠ Do not apply too much force to the locking tab, because a damaged connector will disable the keyboard.

- Remove the keyboard, and placed it in a safe and dry place.

To reassemble your device, follow these instructions in reverse order.