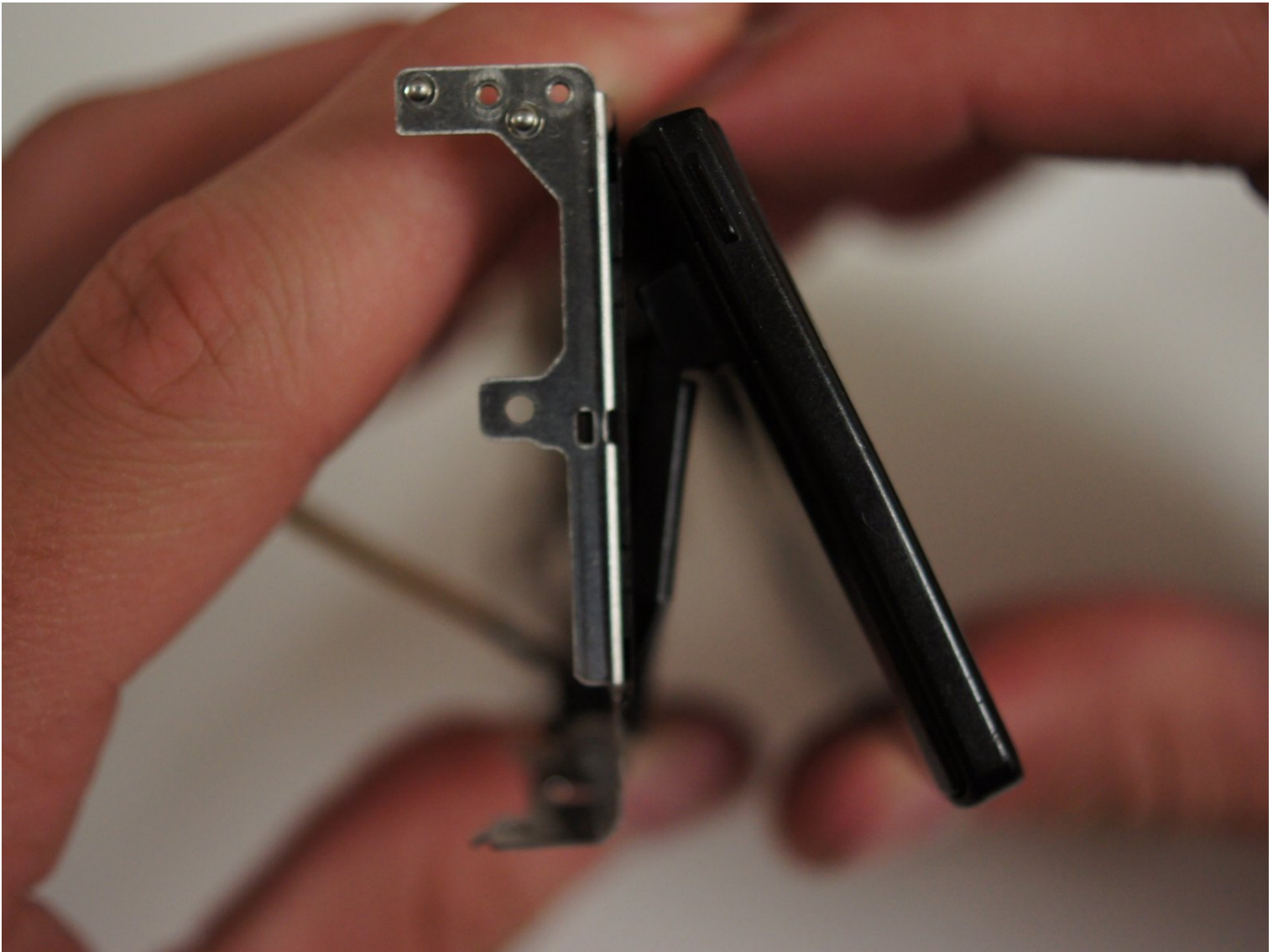




Sony NEX-7 Screen Replacement

This guide will teach you how to remove and...

Written By: Jay Miley



INTRODUCTION

This guide will teach you how to remove and replace the camera's screen. The guide has many steps and will take time to complete, but each step is relatively easy since the guide requires no advanced techniques. Stick to the steps, and you will get through it!


TOOLS:

Phillips #00 Screwdriver (1)

Tweezers (1)

Step 1 — Battery



 We need to turn off the camera because we are removing components that could get damaged if the power is still on.

- If the camera is on, rotate the power switch on top of the camera counterclockwise to turn the camera off.

Step 2



- Flip the camera over such that the power switch points down.
- Slide the switch on the bottom of the camera grip towards the lens to open the battery door.

Step 3



- With the battery door open, push the blue lever in the battery compartment to release the battery.

Step 4 — SD card



- To the left of the battery compartment, the SD card needs to be pushed down slightly with your fingers, which will cause the card to eject.
- Pull the card out with your fingers.

Step 5 — Lens



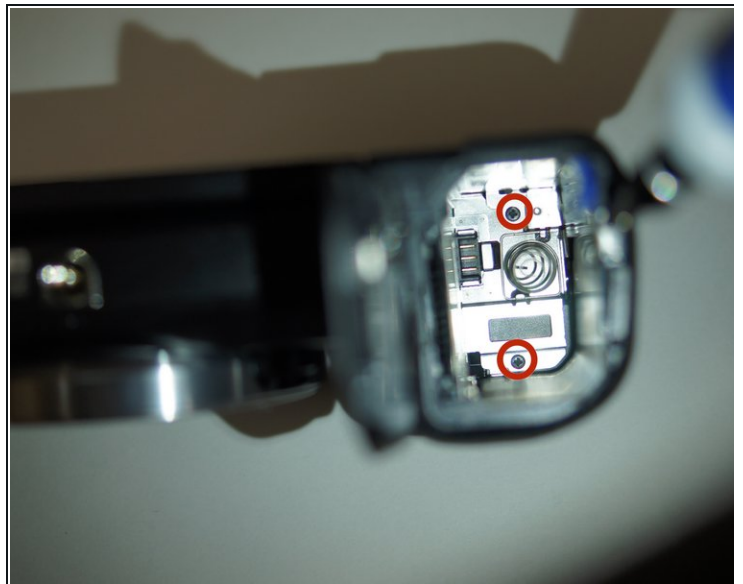
- First, turn the camera upside down.
 - Press the button located next to silver lens mount and rotate the lens counterclockwise.
 - Pull the lens away from the camera body.
- ⚠ After removing the lens, replace the lens or attach the body cap as soon as possible to prevent damage to the shutter.

Step 6 — Top and Back Shell



- Start by removing the two 5/32" #00 screws on the bottom of the camera using the Phillips #00 screwdriver.

Step 7



- Remove the 5/32" #00 screw at the top of the compartment using the Phillips #00 screwdriver.
- Remove the two 5/32" #00 screws from inside the compartment using the Phillips #00 screwdriver.

Step 8



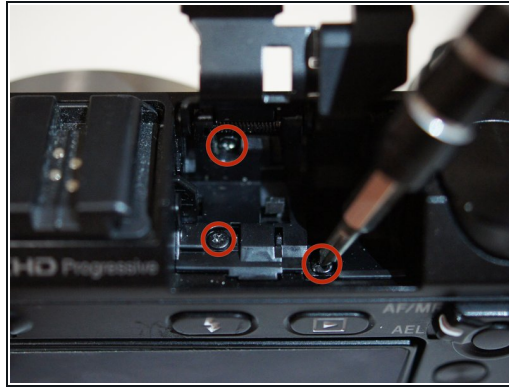
- Close the battery door by pushing it down until it latches shut.

Step 9



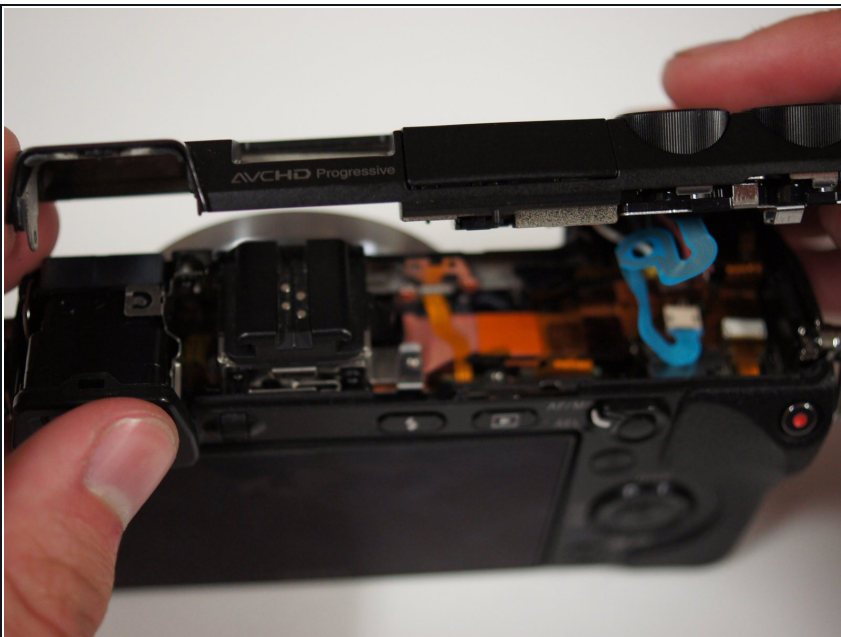
- Looking at the left side of the camera, lift open the door that has 'HDMI' written on it.
- Remove the two visible 5/32" #00 screws using the Phillips #00 screwdriver.

Step 10



- Looking at the back of the camera, press the button with a lightning bolt on it to pop the flash open.
- Remove the three 5/32" screws from within the flash compartment using the Phillips #00 screwdriver.
- Close the flash compartment.

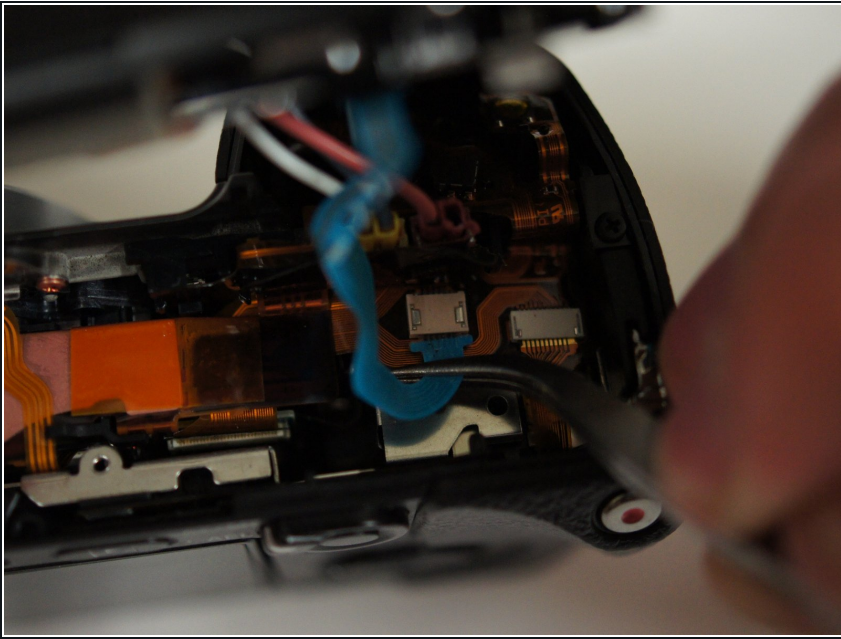
Step 11



⚠ The top of the camera is attached by three wires and a ribbon cable. Remove the top slowly and gently!

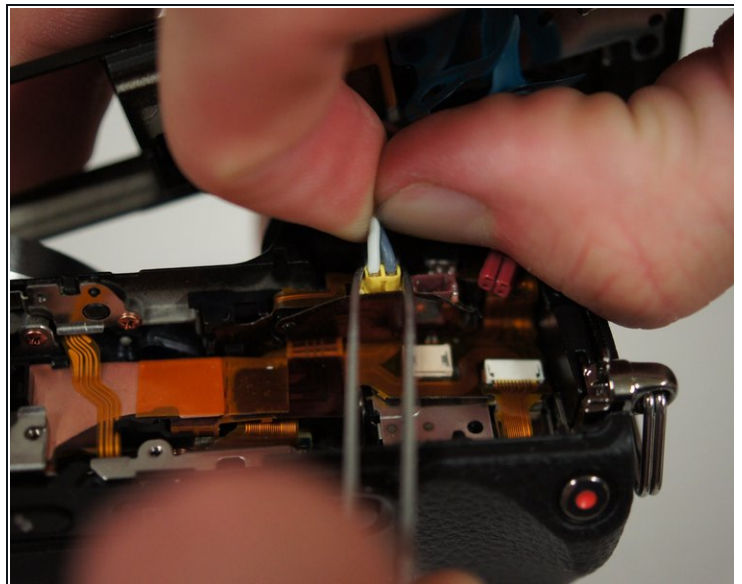
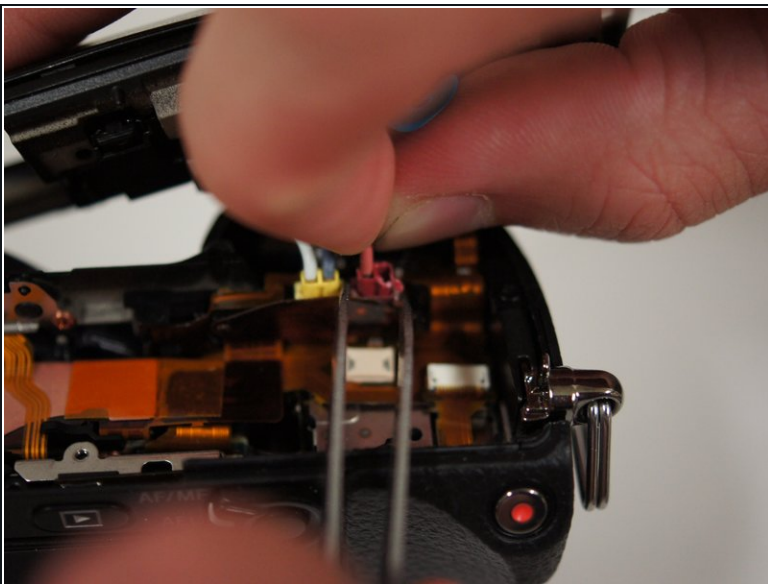
- Lift the top of the camera off of the body.
- ① Let the top hang to the side so you have room to work with the components inside the device.

Step 12



- Using tweezers or your fingers, gently remove the blue ribbon cable from the port.

Step 13



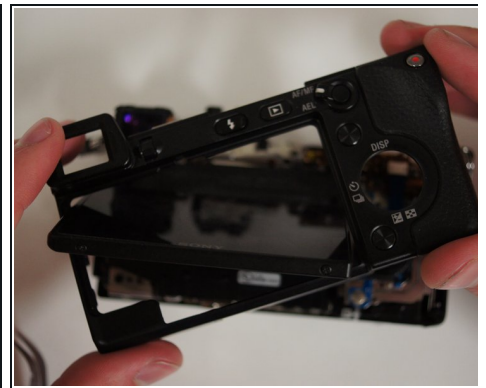
- Place the tips of your tweezers on either side of the red jack.
- Gently pull the red plug out of the jack.
- Repeat those steps for the yellow jack and plug.
- Now that the top is free, place it aside for later.

Step 14



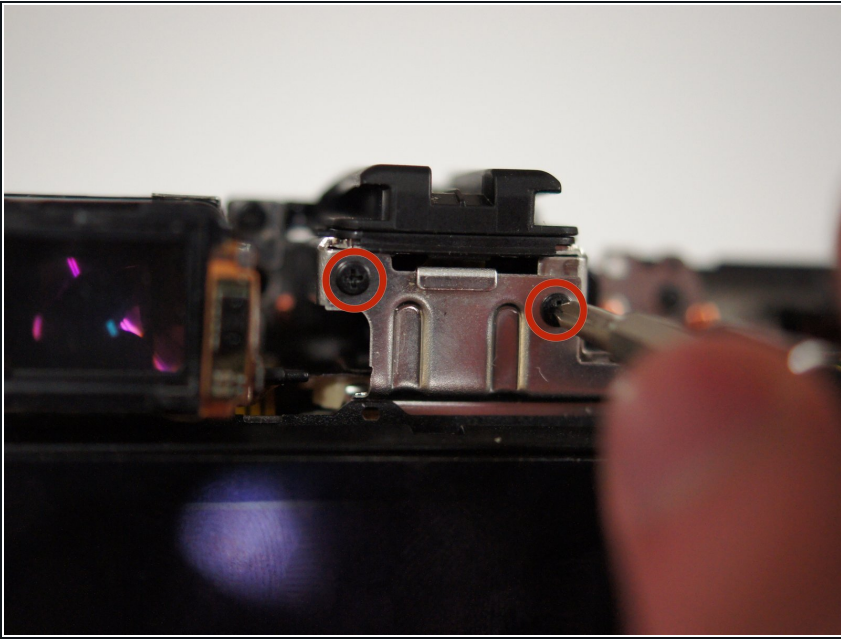
- Lift the LCD screen with your fingers such that the screen is bent slightly away from the camera.

Step 15



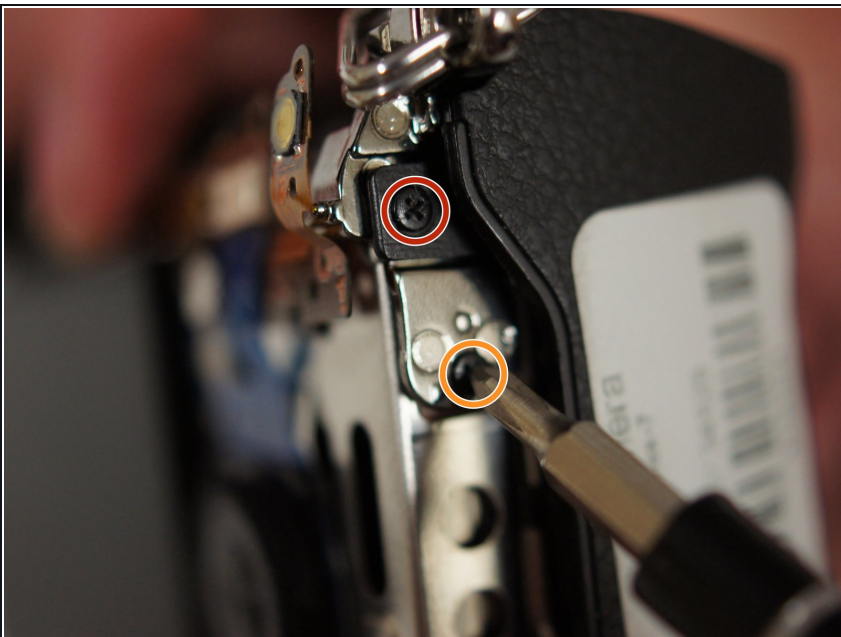
- Starting at the bottom, gently pry the back panel away from the body of the camera using your fingers.
- Once the back panel is free from the body, rotate the camera such that back is facing you and pull the back panel past the screen by rotating it to fit around the screen.
- ⓘ The back panel will be easier to take off if the LCD screen has been extended away from the camera by about 60 degrees.
- Set the back panel aside.

Step 16 — LCD Assembly



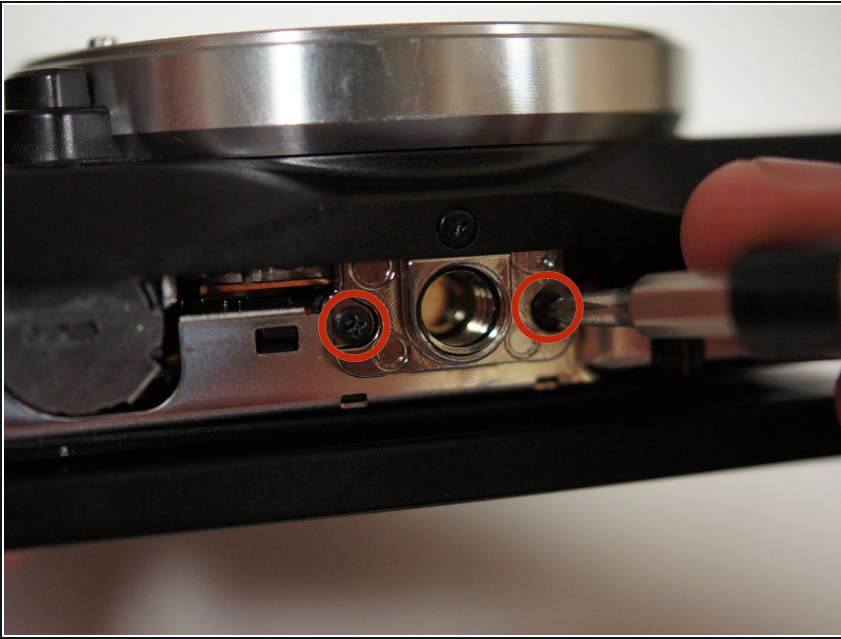
- Remove the two 3/32" #00 screws located next to the viewfinder using the Phillips #00 screwdriver.

Step 17



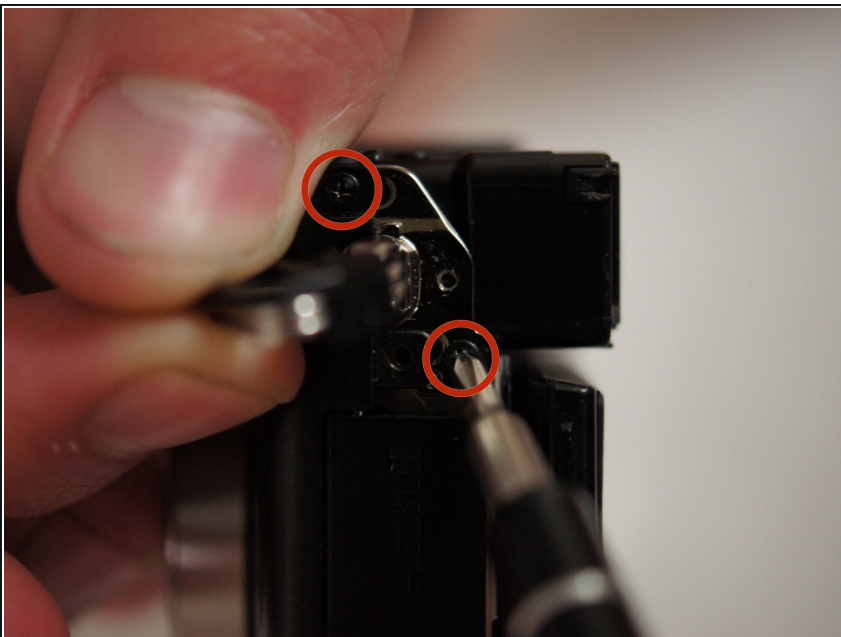
- Use a Phillips #00 screwdriver to remove the two screws from the right side of the camera below the D ring:
 - The 5/32" upper screw
 - The 3/32" lower screw

Step 18



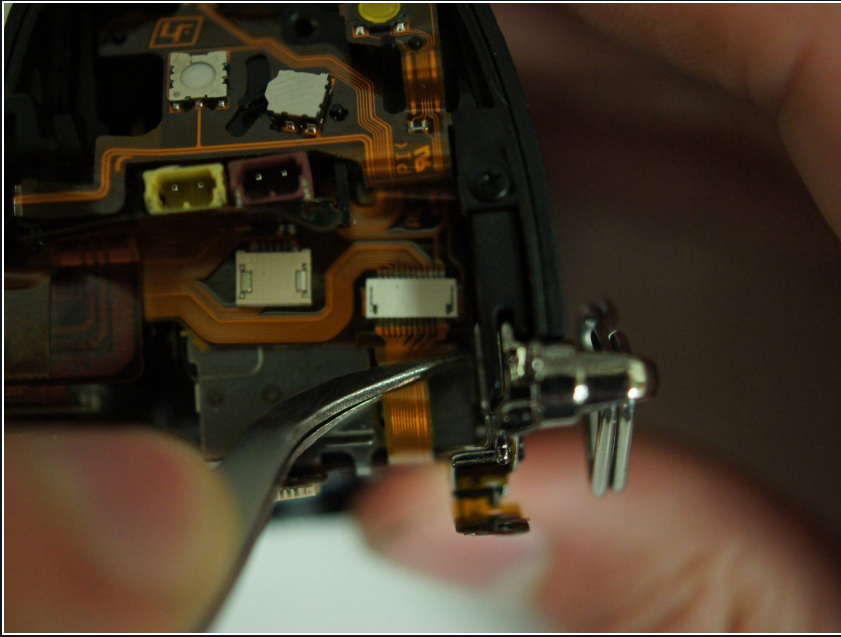
- Remove two more 3/32" #00 screws from the bottom of the camera using the Phillips #00 screwdriver.

Step 19



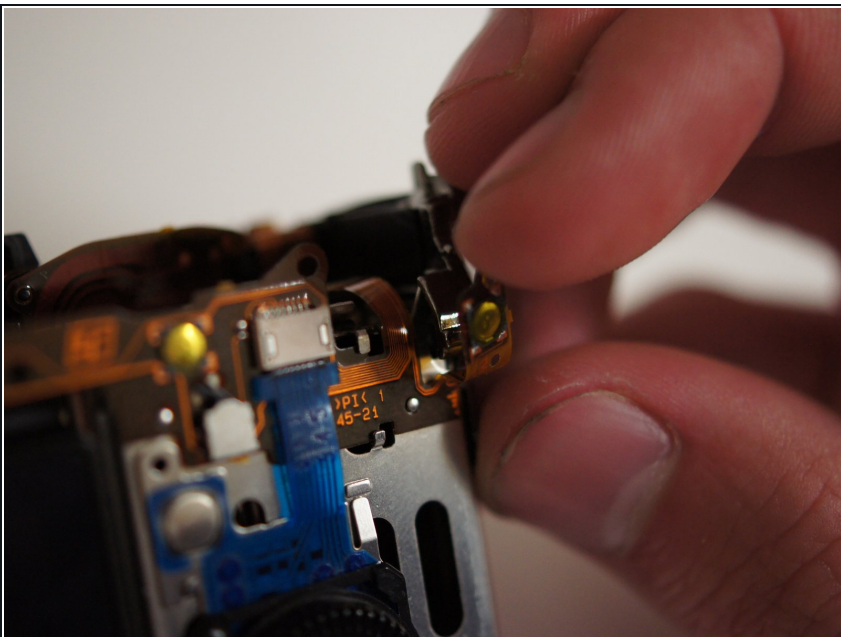
- Remove two more 3/32" #00 screws from the metal bracket on the left side of the camera using the Phillips #00 screwdriver.

Step 20



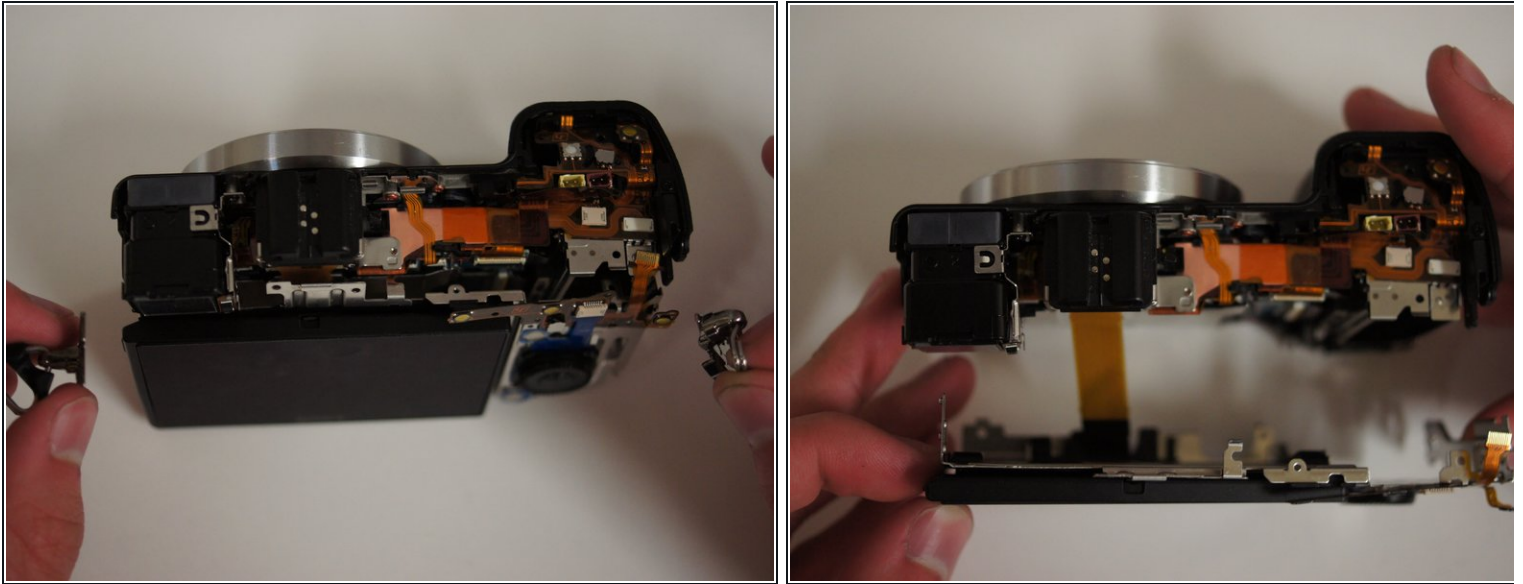
- Unplug the orange ribbon cable on the top right of the camera next to the metal bracket by applying tweezers to the tabs on either side of the plug.

Step 21



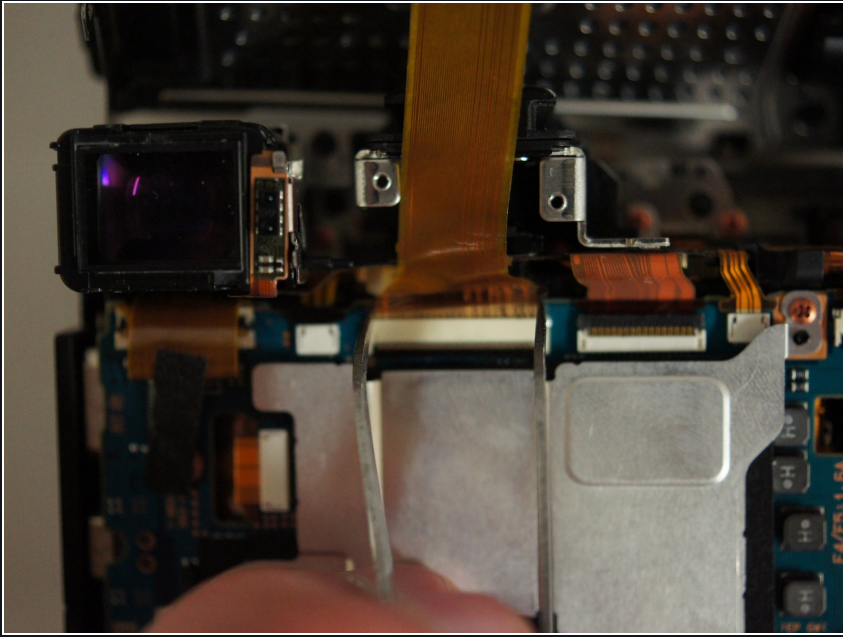
- Before pulling off the assembly, fold the rightmost tab of the flexible circuit board away from the metal bracket.

Step 22



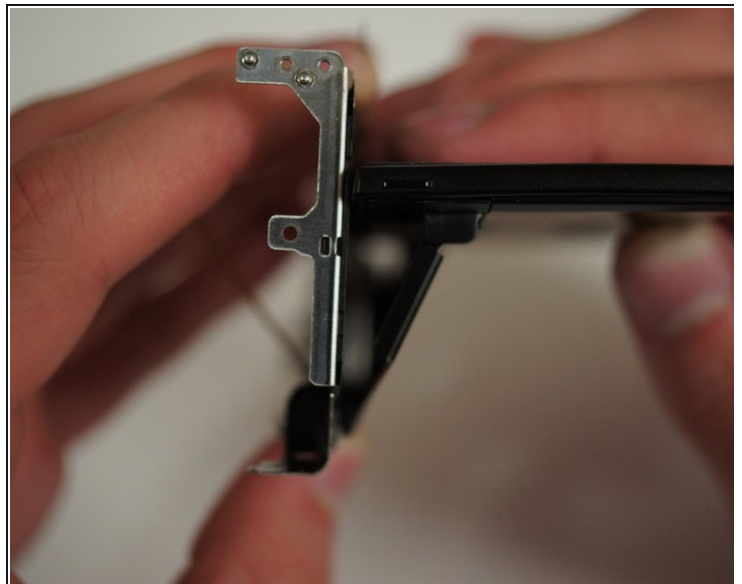
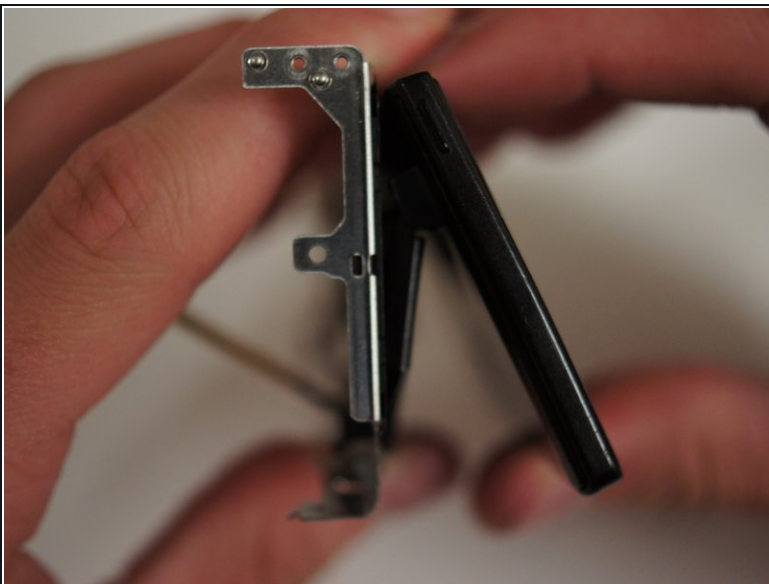
- ⚠ The LCD assembly is attached with a concealed ribbon cable, so be gentle when you remove it.
- ⓘ The D ring brackets on either side are not attached, only held in mechanically. Once the LCD assembly starts to come out, they will detach.
 - Pull on the D rings on either side of the camera to start removing the assembly.
 - Once the brackets are cleared from black shell, take them off and set them aside.
 - Continue to remove the screen assembly.

Step 23



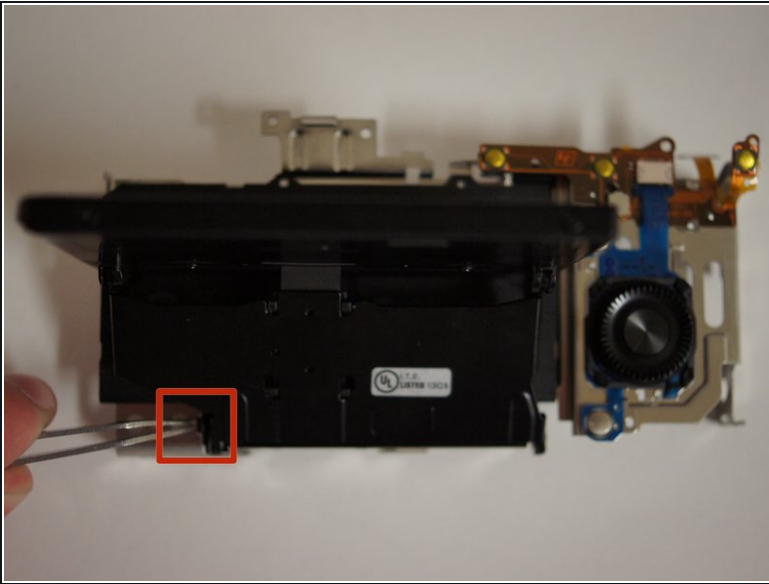
- With the camera face down, move the assembly away from you to get a clear view of the wide ribbon cable.
- Unplug the cable by applying tweezers to the tabs on either side of the plug.
- Set the LCD assembly aside.

Step 24 — Screen



- Set aside the camera body, top, and back plate and focus on the LCD assembly.
- Rotate the screen away from the metal bracket.

Step 25



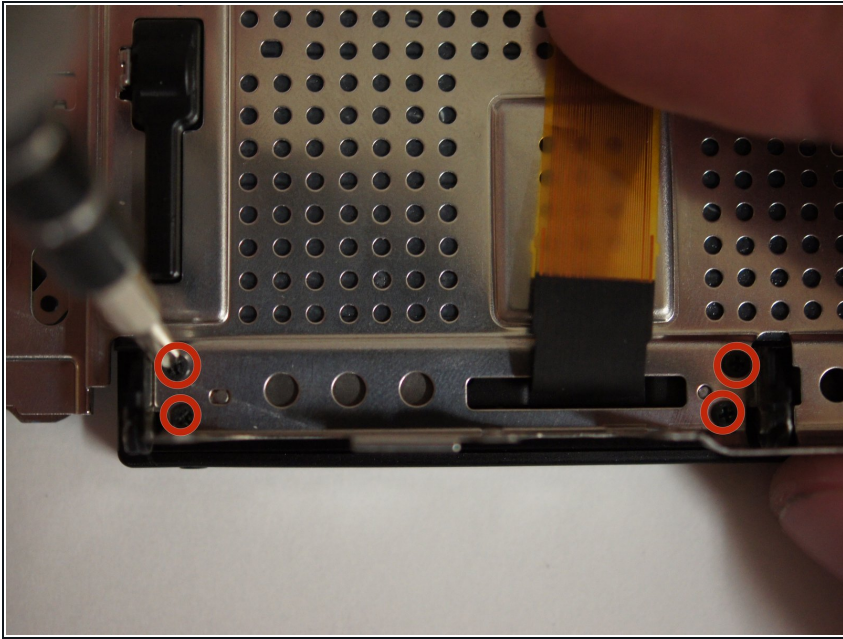
- Use the tweezers to push the tab near the bottom left corner of the panel to release a plastic cover from the back of the panel.

Step 26



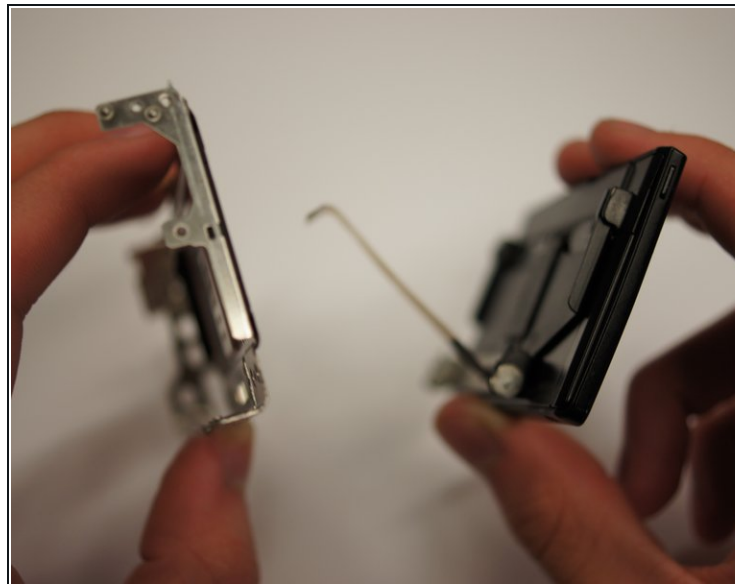
- Turn the assembly around and slide the plastic cover off of the ribbon cable.

Step 27



- Remove the four 2/32" #00 screws from the metal bracket using the Phillips #00 screwdriver.

Step 28



- Remove the screen from the metal panel.

To reassemble your device, follow these instructions in reverse order.