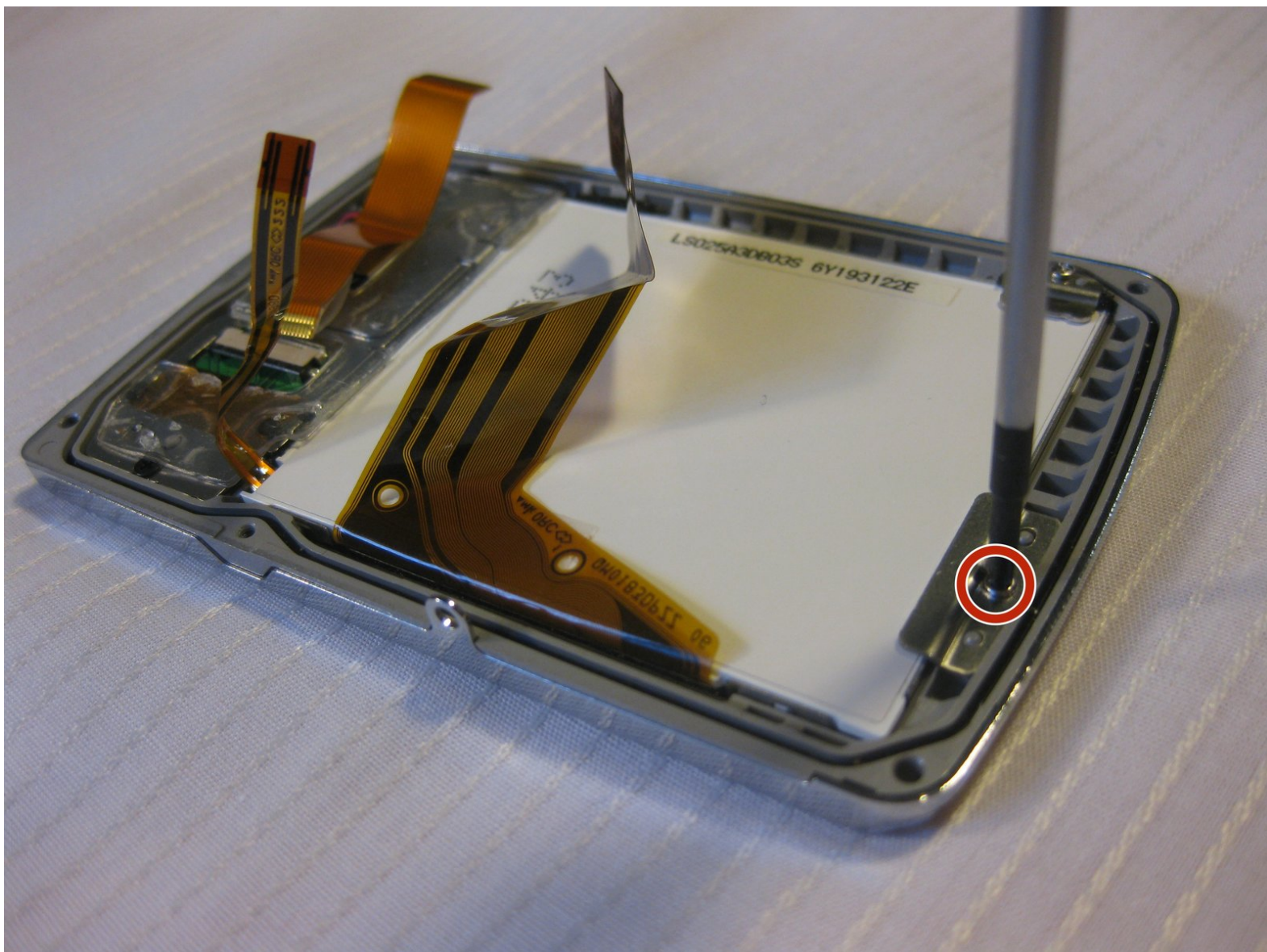




Olympus Stylus 725 SW LCD Screen Replacement

This guide provides instructions for replacing...

Written By: Bobby Hodges



INTRODUCTION

This guide provides instructions for replacing a broken LCD screen on the Olympus Stylus 725.

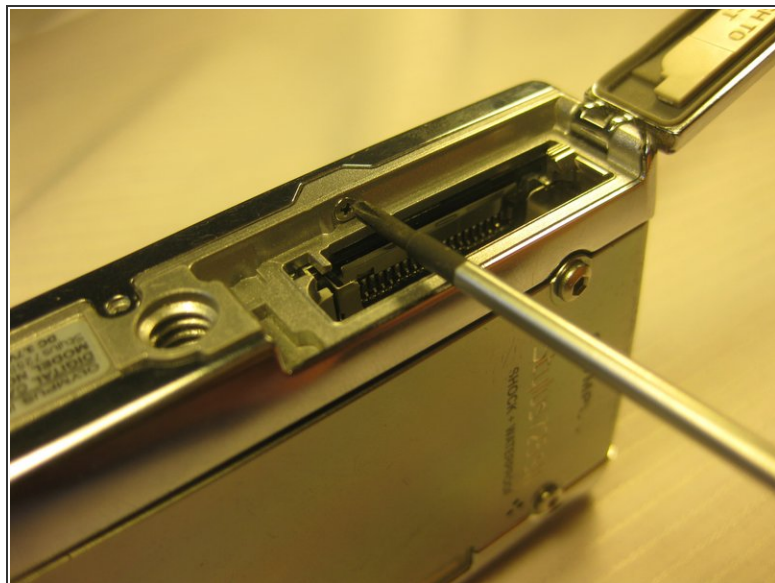
TOOLS:

- [Tweezers](#) (1)

Optional, but helpful

- [Phillips #00 Screwdriver](#) (1)
-

Step 1 — Disassembling Olympus Stylus 725 SW Battery



i The battery is located on the bottom of the camera.

- Remove the battery by placing your thumb on the bottom flap and sliding the release button away from the side the lens is on. (The screwdriver is simply used as a reference point, no screws need to be removed)
- If the battery is dead, charge it for 60-90 minutes.

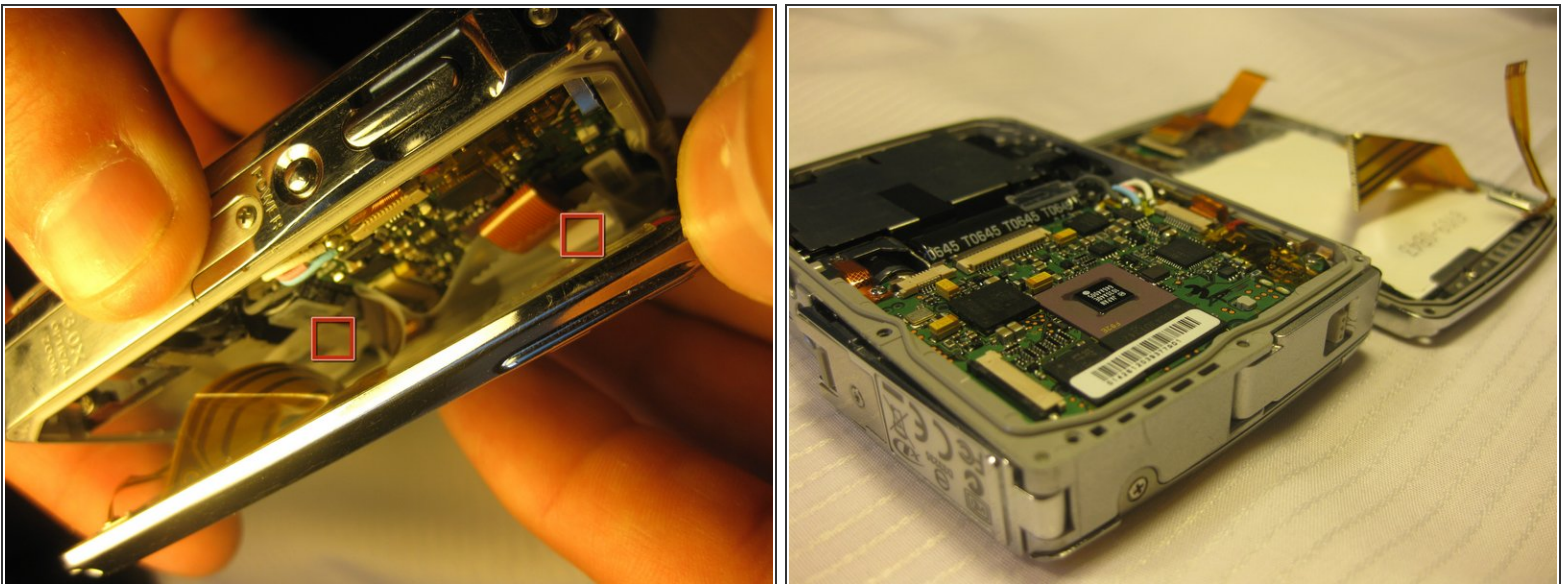
⚠ When installing a charged battery, align the battery appropriately. The positive signs and negative should line up.

Step 2 — Disassembling Olympus Stylus 725 SW Back Panel



- Remove the four 3 mm long cover screws at the corners of the camera using a Phillips #00 screwdriver.
- Remove the 2 mm long screws securing the sides of the camera which holds the back panel using a Phillips #00 screwdriver.

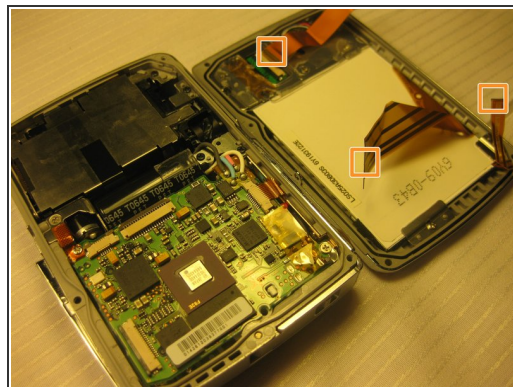
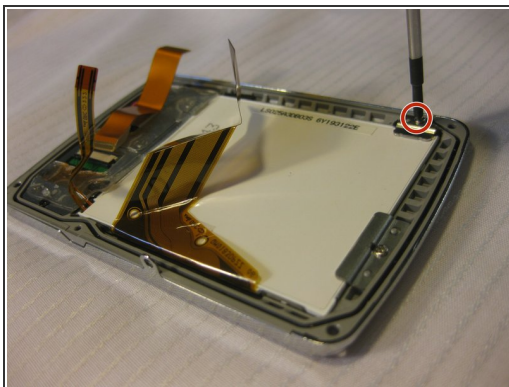
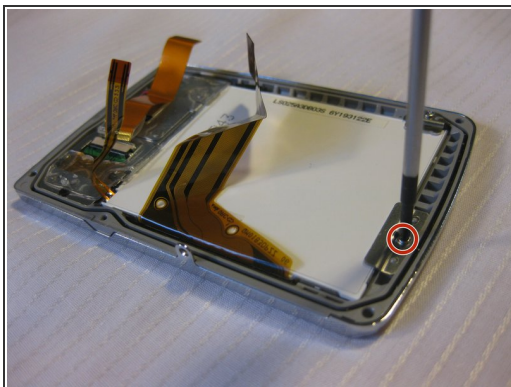
Step 3



⚠ Be careful when removing the back cover; you will need to detach the connecting ribbons. Use tweezers if necessary.

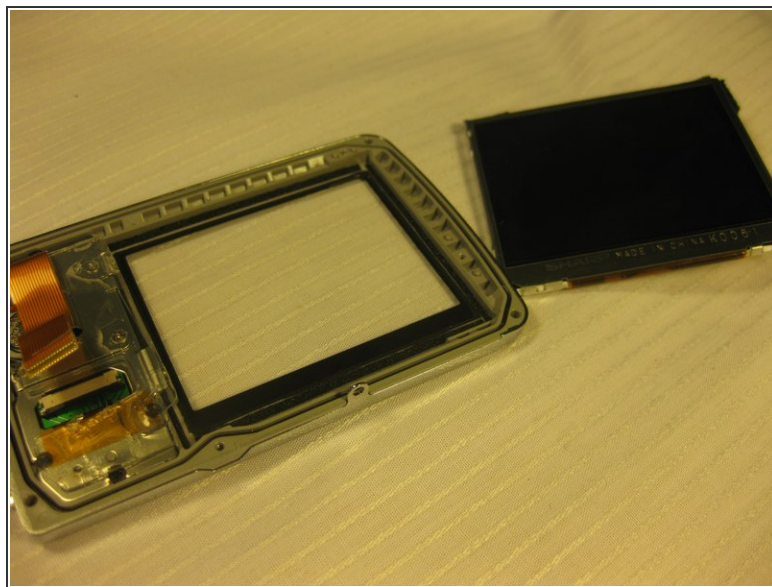
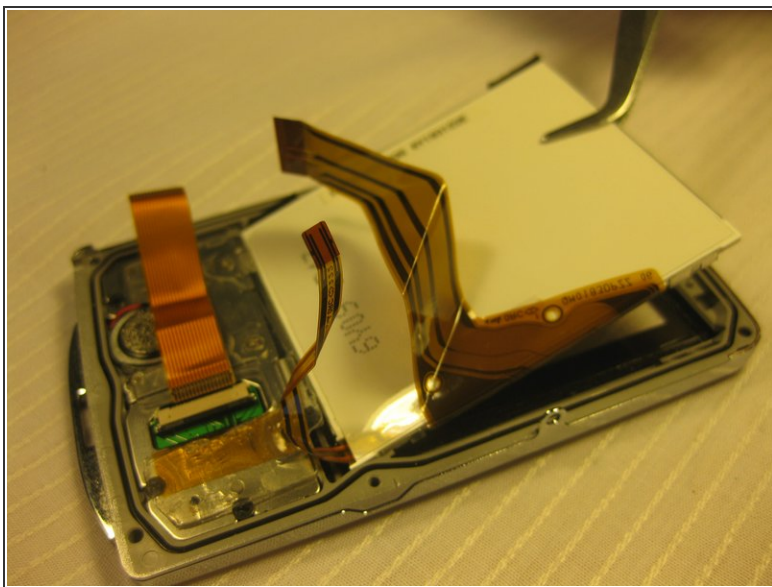
- Detach the ribbons using your thumb, sliding them out of their slots.
- Set the back panel face up to keep the ribbons from touching anything.

Step 4 — LCD Screen



- Remove the screws in the back panel using a Phillips #00 screwdriver.
- Detach the ribbon cables that connect the LCD to the back panel of the camera.

Step 5



- Use tweezers to remove the loosened LCD screen.
- ⚠ Be careful to not scratch the new LCD screen when replacing it.
- Carefully place the new screen in place of the old, making sure the label faces up.

To reassemble your device, follow these instructions in reverse order.

This document was generated on 2023-01-21 04:19:31 AM (MST).

