



Dell Inspiron 1545 Display Replacement

This will cover the removal of the Dell Inspiron 1545 Display and its subsequent parts.

Written By: Nathan Lemay



INTRODUCTION

There are many parts that can go bad within a display. This guide does not necessarily cover the replacement of all the smaller pieces, but it does allow you to access those parts.



TOOLS:

- [Phillips #1 Screwdriver](#) (1)
- [iFixit Opening Tools](#) (1)



PARTS:

- [Dell Inspiron 1545 \(PP41L\) Display](#) (1)

Step 1 — Battery



- ✦ Before attempting to remove the battery ensure that the laptop is disconnected from all power sources and turned off.
- Turn the laptop over to its back.

Step 2



- Slide the release latch while simultaneously pulling backwards on the battery.

Step 3



- Slide the battery out of the battery bay.

Step 4 — Center Control Cover



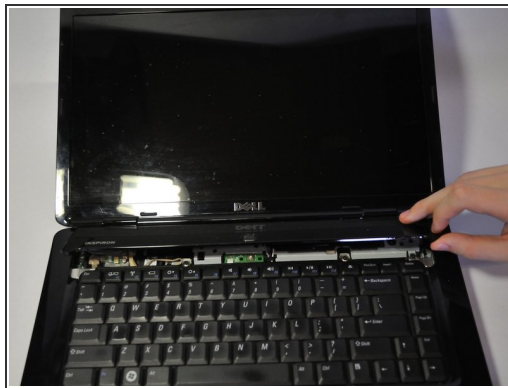
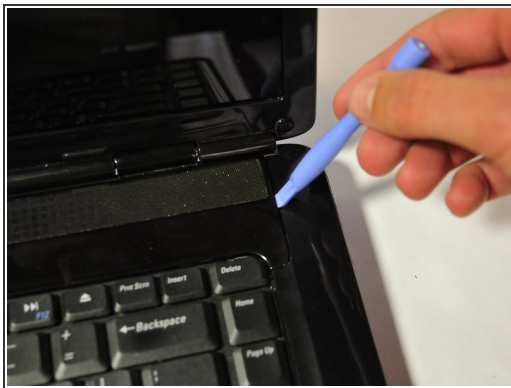
- After removing the battery, remove the two screws (3mm Phillips #1) beneath it. These screws hold the Center Control Cover in place.

Step 5



- Flip the laptop over to the front and open the display as far as possible.

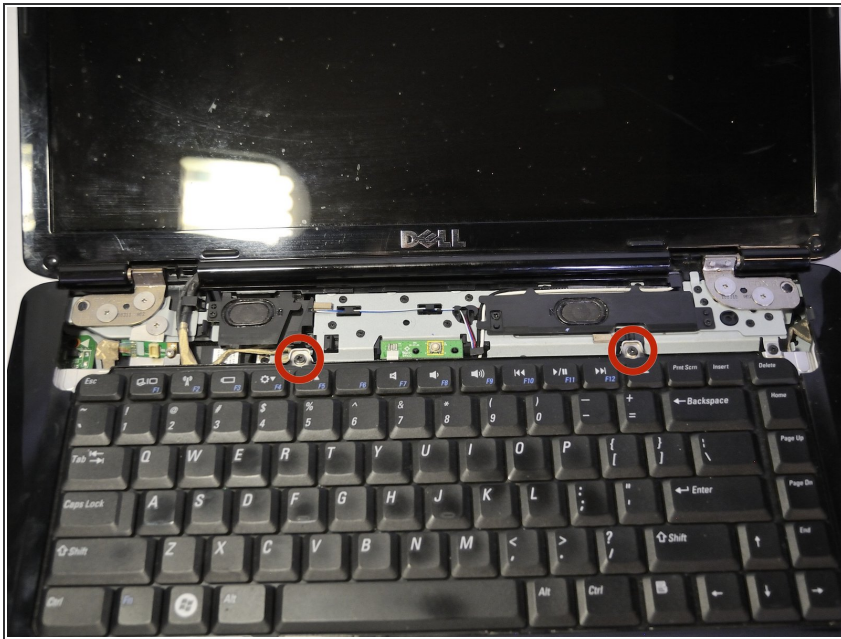
Step 6



 The Center Control Cover is VERY fragile, be careful when using prying tools.

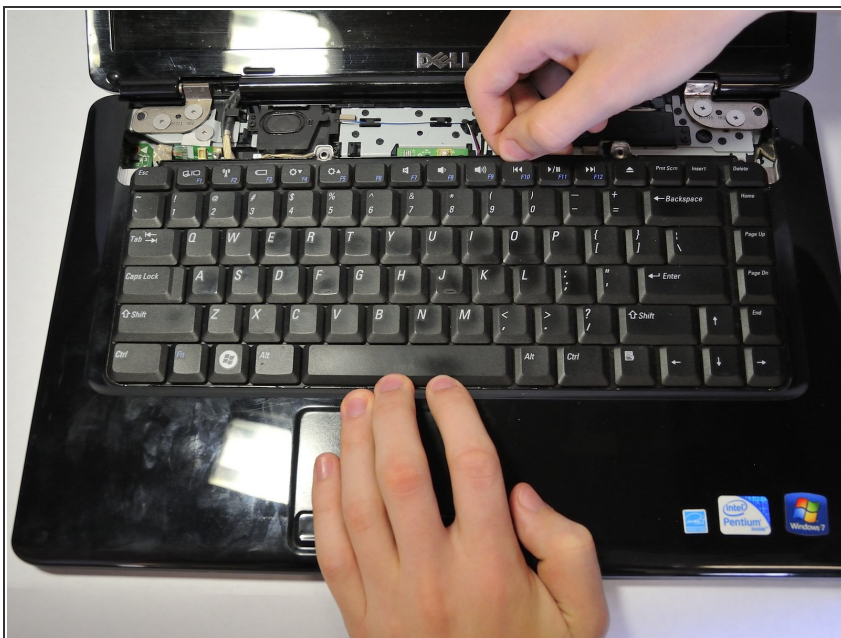
- Pry the Center Control Cover from the laptop. On the right there is a small divot, it is advised that you start removing the panel from here.
- Carefully lift the Center Control Cover away from the laptop.

Step 7 — Keyboard



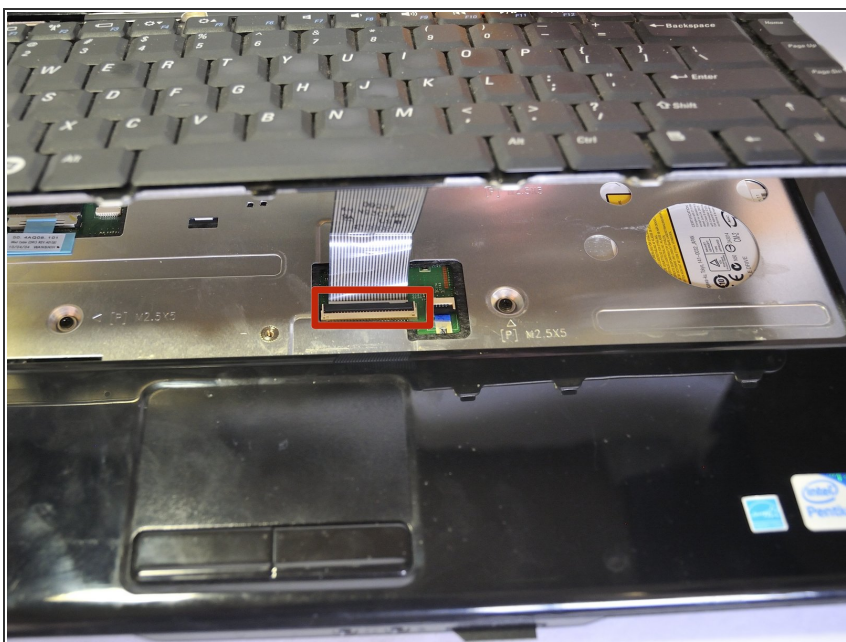
- Remove the two screws (5mm Phillips #1) at the top of the keyboard.

Step 8



- Slide the keyboard out and away from the laptop and lift it up to access the keyboard connector.
- ⚠ Do not pull hard on the keyboard while removing it, you may damage the keyboard or the keyboard connector.

Step 9



- Lift the connector latch that secures the keyboard cable to the connector on the motherboard and remove the cable.

Step 10



- Lift the keyboard up and away from the laptop.

Step 11 — Display



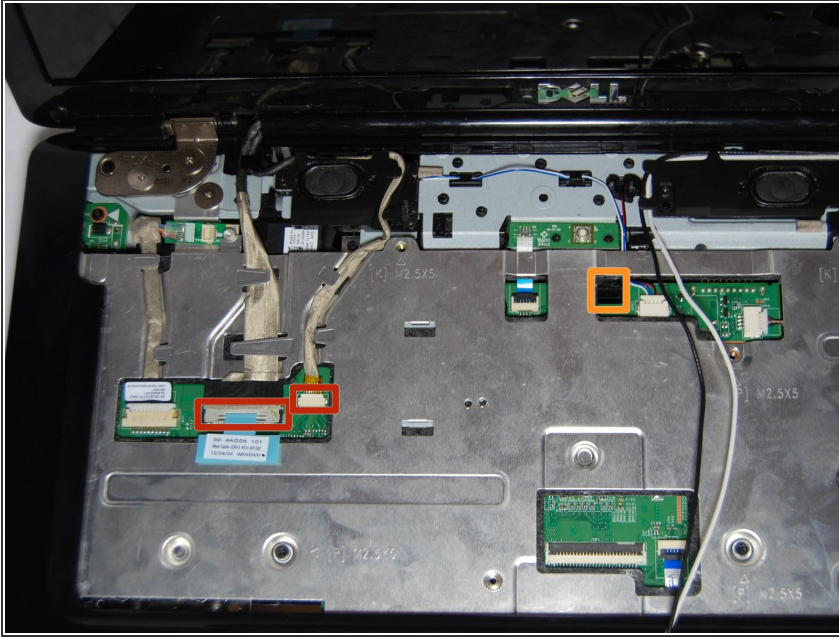
- Remove the two screws (5.5mm, Phillips #1) from the laptop base.

Step 12



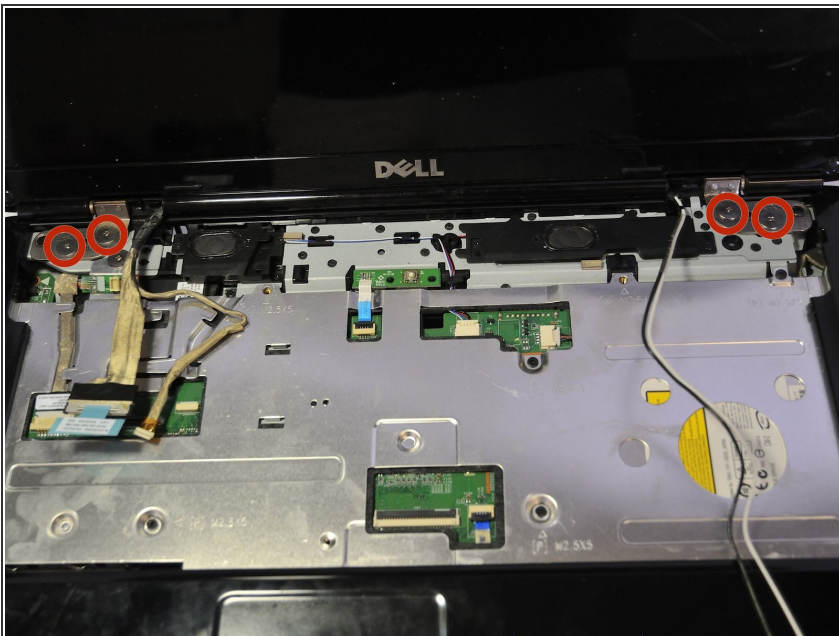
- Remove black and white wires from the WLAN that lead to the display by pulling straight up.
- Unwind the wires so they can be freely pulled through in the next step.

Step 13



- Turn the laptop over to its standard position.
- Disconnect the Wed cable and Camera1 cable from the respective Motherboard connectors as marked. Unsecure the wires so they are loose.
- Pull the black and white wires previously connected to the WLAN through the hole.

Step 14



- Remove the Camera1 cable, the Wed cable, and the black and white wires from the routing guides.
- Remove the four screws (5mm Phillips #1) (two on either side) that secure the display assembly.

Step 15



- Lift the display assembly off the computer.

To reassemble your device, follow these instructions in reverse order.