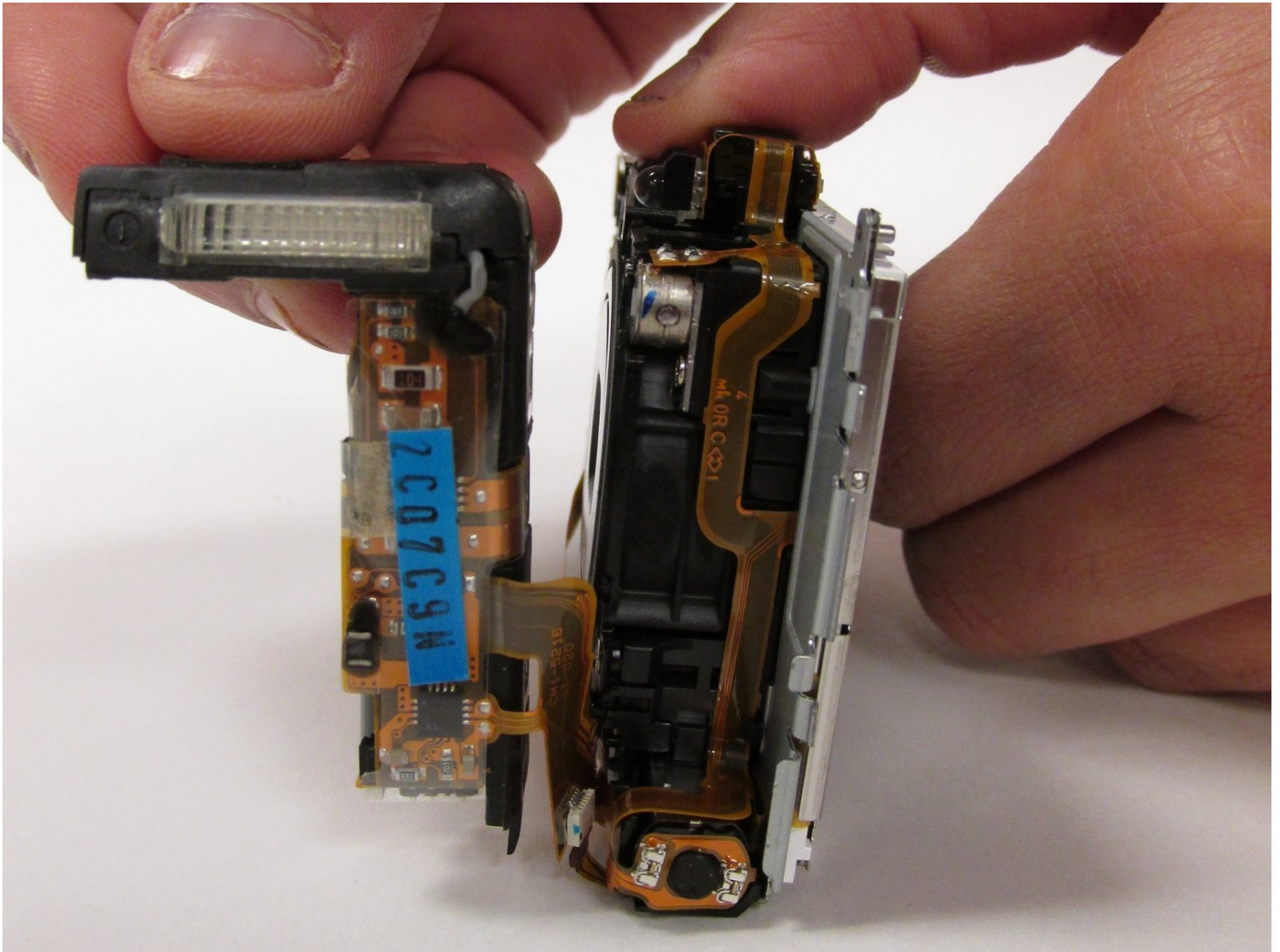




Canon PowerShot SD780 IS Flash Capacitor Replacement

This replacement guide will show you how to...

Written By: Arlene Ale



INTRODUCTION

This replacement guide will show you how to access the flash capacitor of the Canon Powershot SD780 IS.

Be extremely careful in dealing with the capacitor as it can store a large electrical charge for a long period of time. The safest way to handle a capacitor is by discharging it. You can make a capacitor discharge tool by following the [Constructing a Capacitor Discharge Tool](#) guide.

TOOLS:

[Phillips #00 Screwdriver](#) (1)

[Spudger](#) (1)

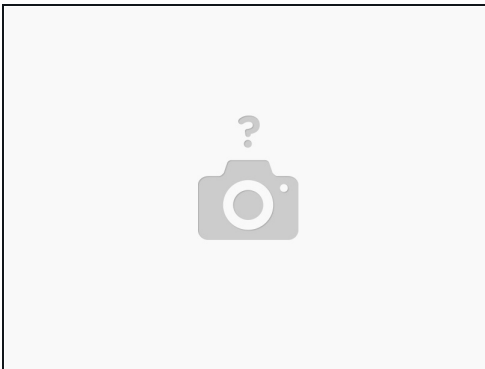
[Magnetic Project Mat](#) (1)


Optional For Keeping Track of Screws

[Anti-Static Project Tray](#) (1)

Optional For Keeping Track of Screws

Step 1 — Flash Capacitor



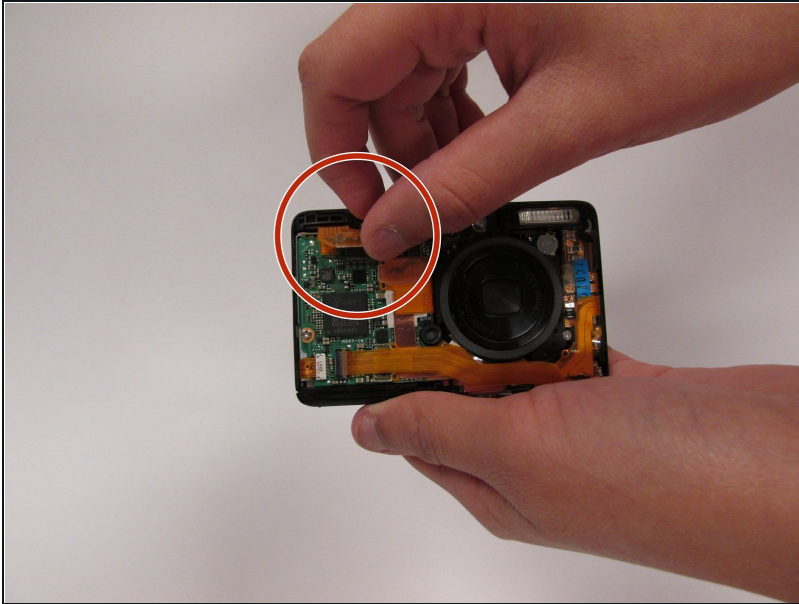
 Begin by making sure the camera is turned off and the battery has been removed to avoid any shock injuries.

Step 2



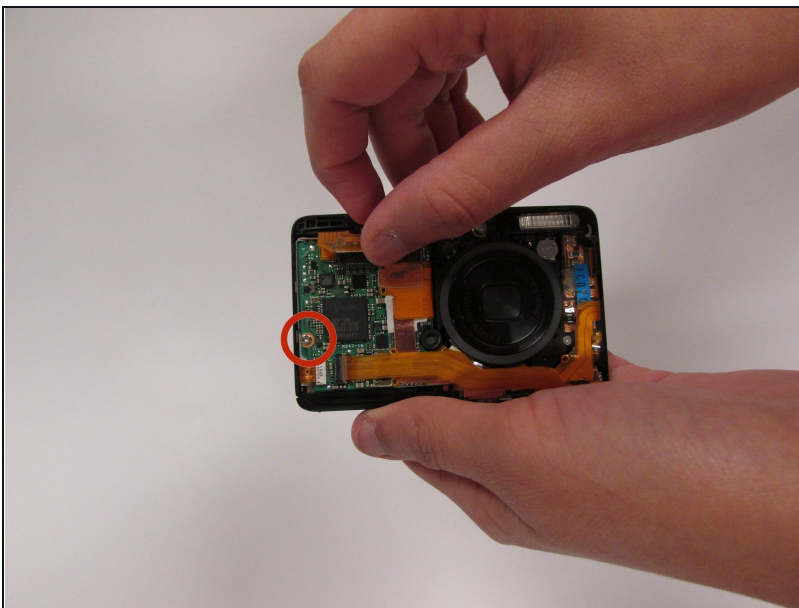
- Having removed the battery, you can begin removing the outermost screws on the camera to allow for case replacement. There are 5 screws in total. This will require a Philips head # 00 screwdriver.
- ☑ Keep track of where each screw came from in order to avoid complications during the reassemble process.
- ① The screws highlighted by the red square in the second image (on the left side in the first image) are 2.0 mm long.

Step 3



- Remove the front panel of the camera case to expose the top left copper strip, and gently pull the strip upward to disconnect from camera.

Step 4



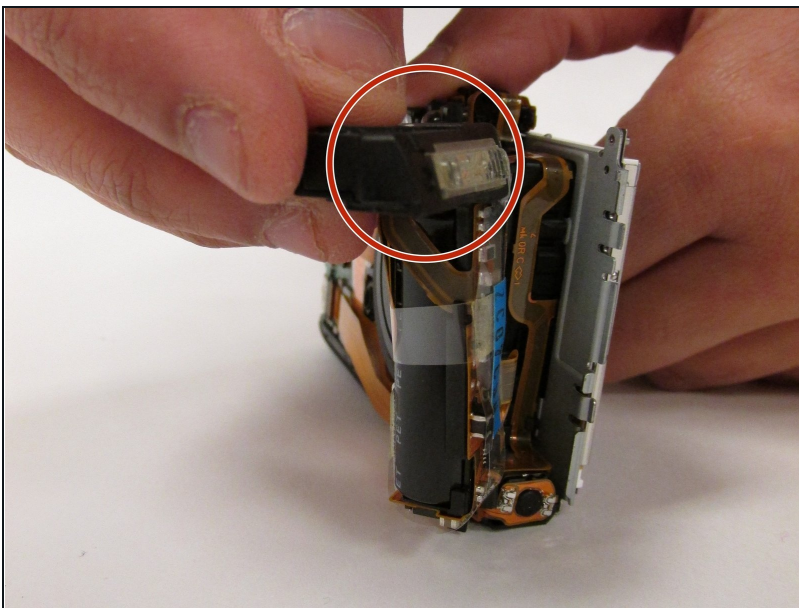
- Remove the screw on the far left hand side of the camera.

Step 5



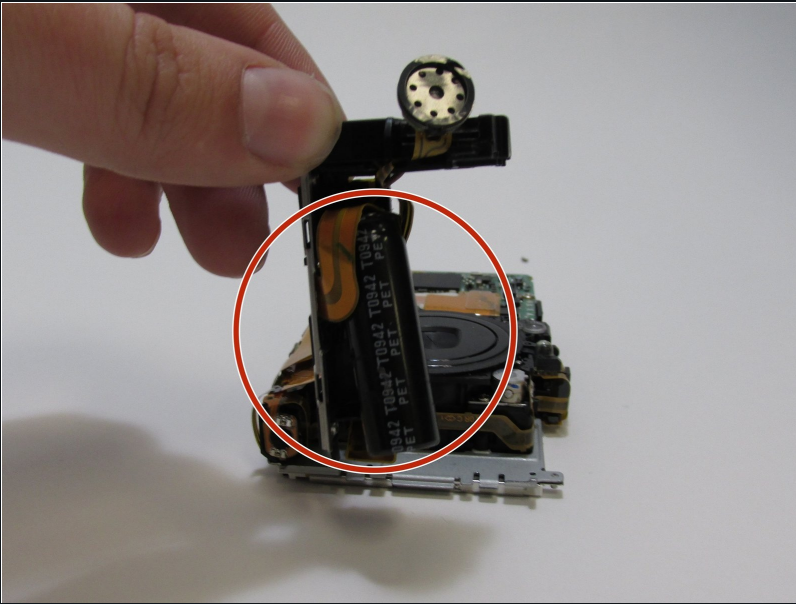
- Now that you have removed all of the screws, carefully pull the case apart at the seam. The case will detach from the camera in two pieces.

Step 6



- Locate the image stabilizer on the top right of the camera and pry the internal battery away from the camera. Having done this, the internal battery can be removed easily.

Step 7



- You have now exposed the internal battery, and you may proceed to exchange the old internal battery for a new one.

To reassemble your device, follow these instructions in reverse order.