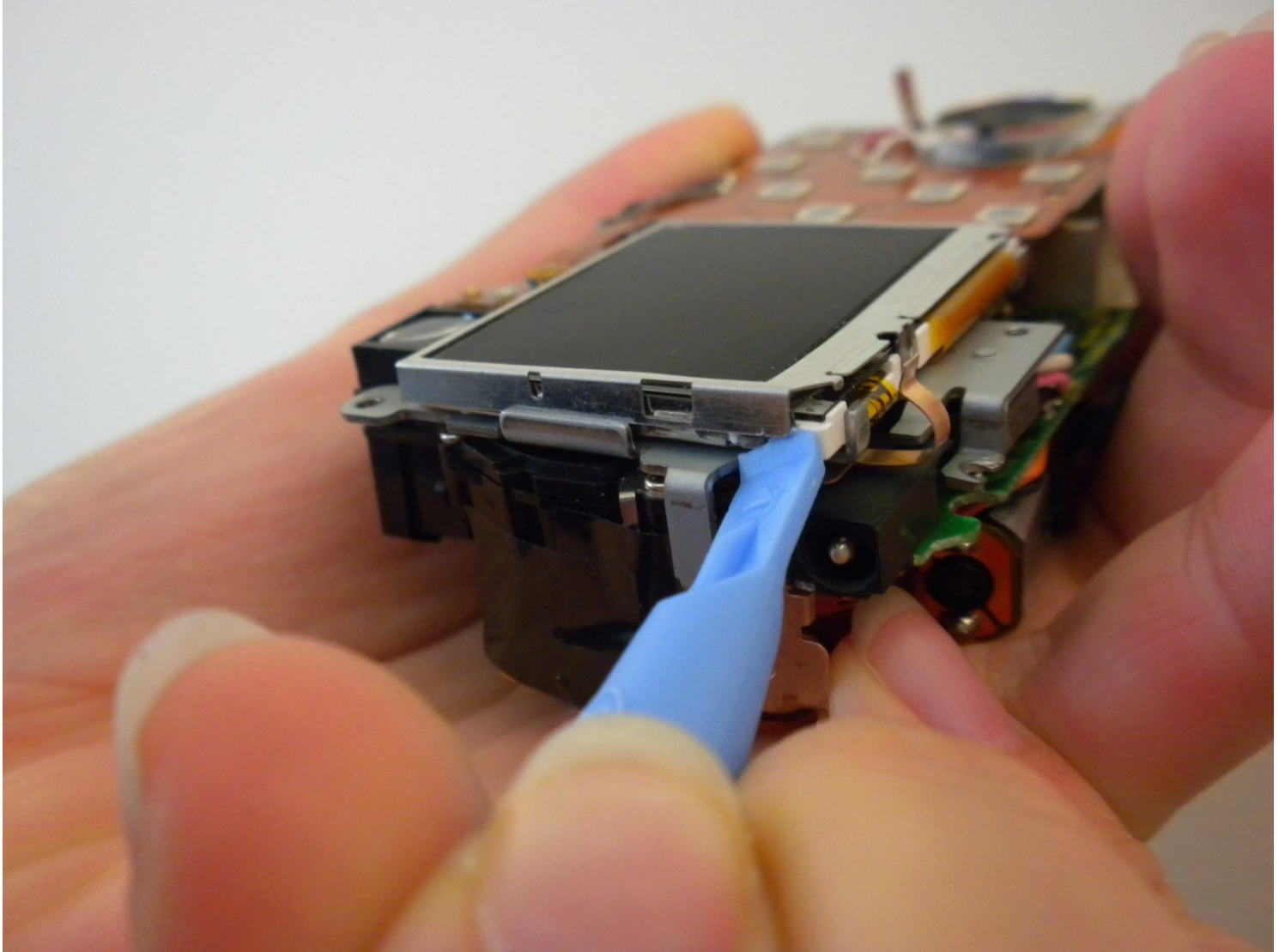




# Olympus Stylus 410 LCD Screen Replacement

If the screen on your Olympus Stylus 410 is...

Written By: Rory Aronson



# INTRODUCTION

If the screen on your Olympus Stylus 410 is cracked and/or no longer works, use this repair guide to install a new one.

---

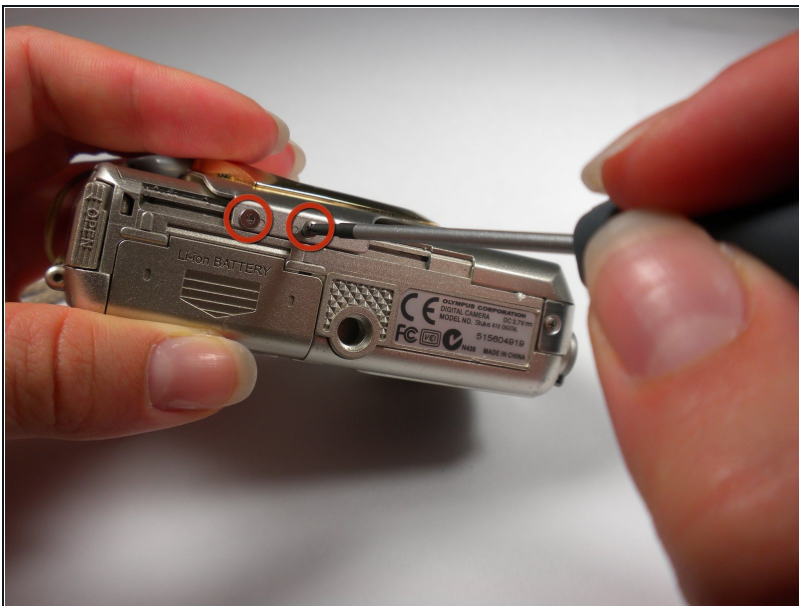
## TOOLS:

Phillips #00 Screwdriver (1)

Spudger (1)

---

## Step 1 — Slider



- Locate the 2 screws on the bottom of the slider.
- Remove both screws with a #00 Phillips screwdriver.

## Step 2



- Gently pull on the bottom of the slider until it comes off the lower track.
- There is a little piece that connects the slider to the track. Be sure not to lose this as it is needed to put the slider back on.

## Step 3



- Lift the slider up until it comes off the upper track.

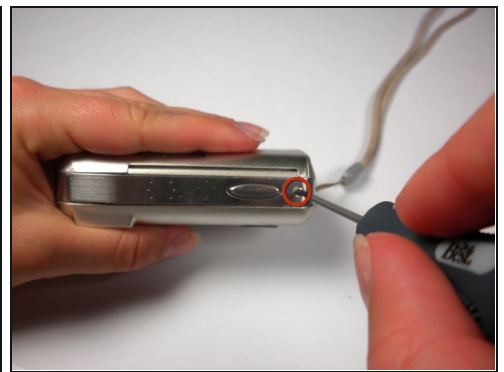
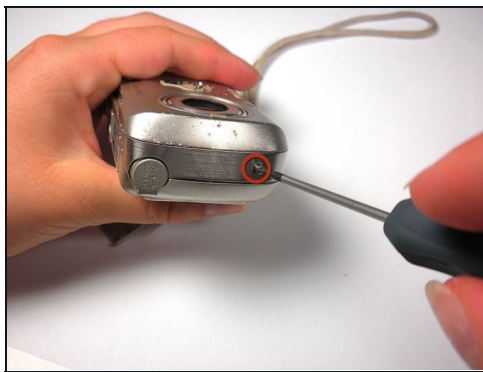


## Step 4



- The slider should now be free from the body of the camera.

## Step 5 — Outer Case



- Locate the 3 screws on the outer metal band and remove them with a #00 Phillips screwdriver.

## Step 6



- Use the spudger to peel off the outer metal band, starting from the bottom of the camera.

⚠ The metal band is attached to the camera with glue in addition to screws. Be careful not to bend the band when removing it from the camera.

## Step 7



- The shutter button can now be removed. It is not connected to the camera and can be lifted off.

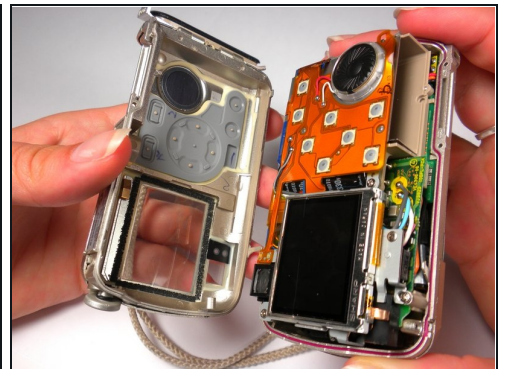
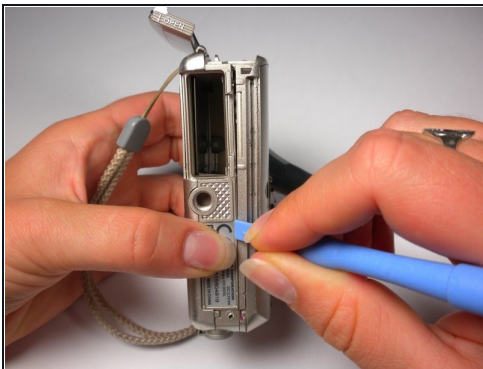


## Step 8



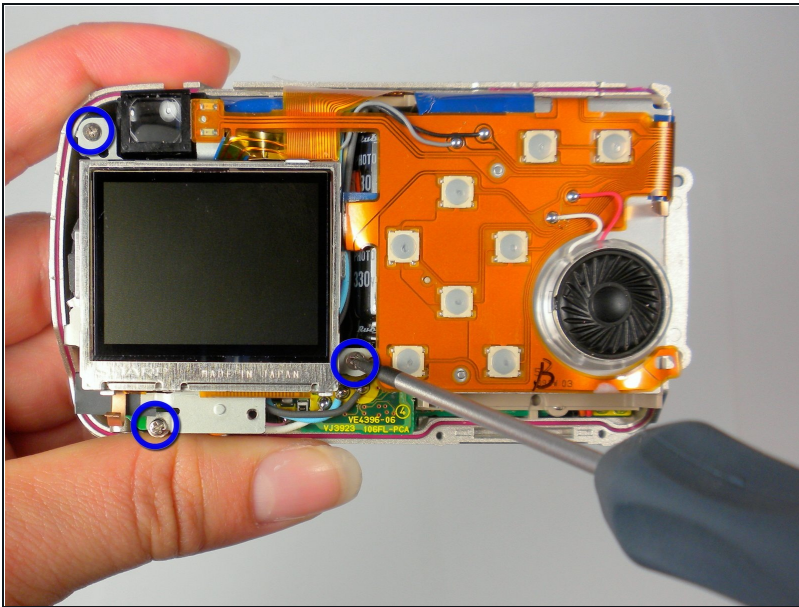
- Remove the memory card.
- Locate and remove the 2 screws using a #00 Phillips screwdriver.

## Step 9



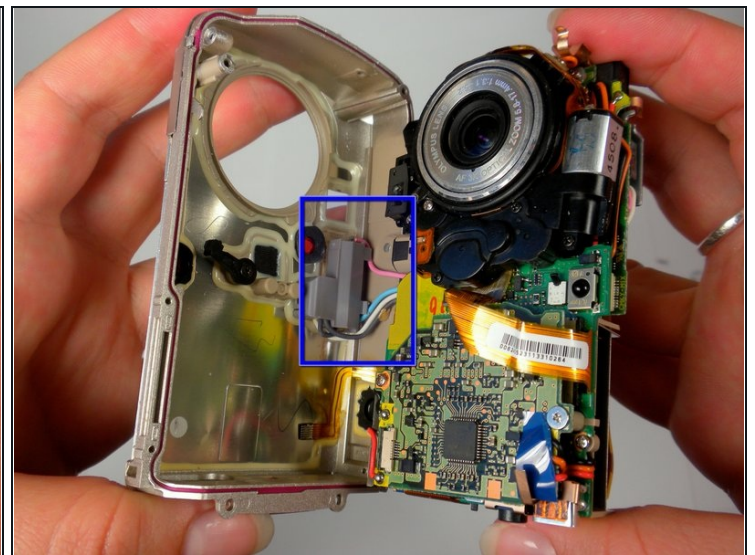
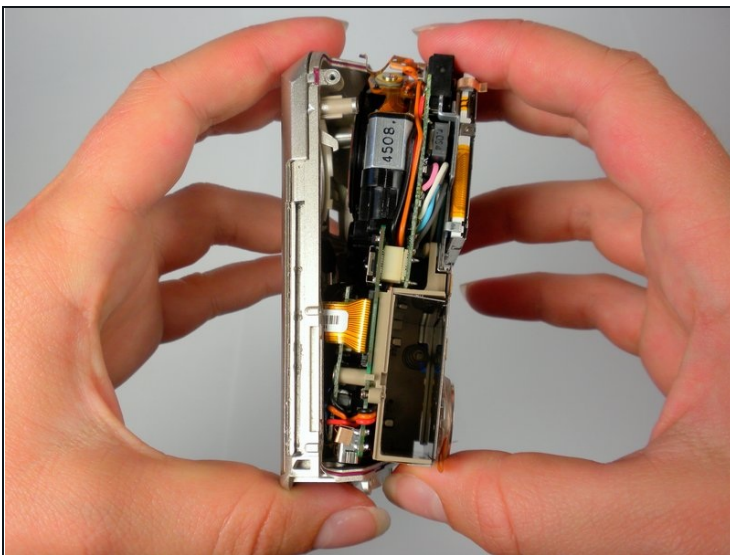
- Use a spudger around the edge of the case to loosen it.
- Carefully wiggle the back case off. This may require a fair amount of force.

## Step 10



- Locate the 3 internal screws holding on the front of the case. Remove them with a #00 Phillips screwdriver.

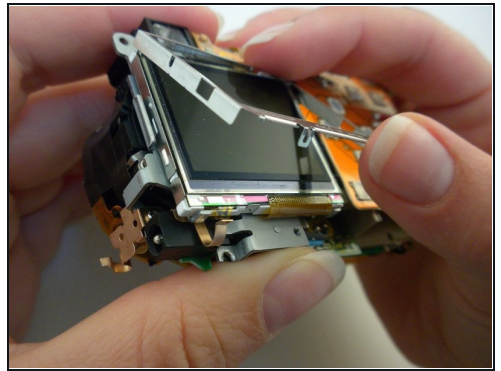
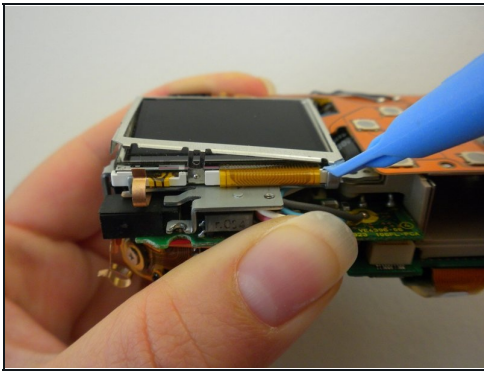
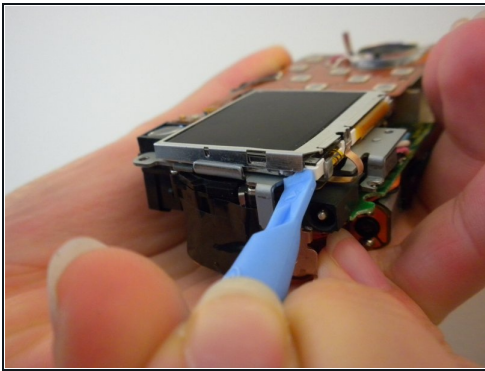
## Step 11



- While grasping the interior and the front case, gently pull until they start to come apart. Some light wiggling may be required.
- Be careful not to completely pull the front case off because it will still be connected with wires.

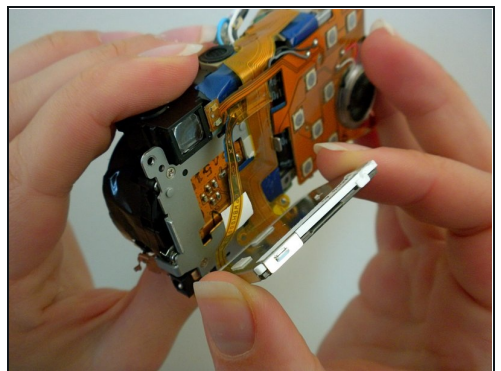
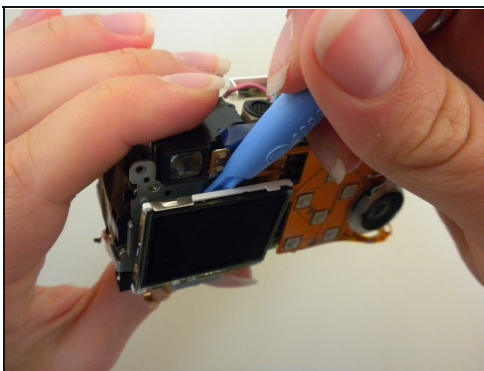
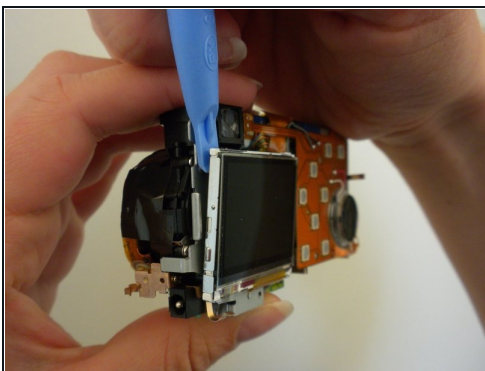


## Step 12 — LCD Screen



- Remove the metal frame from the LCD screen using an opening tool.

## Step 13

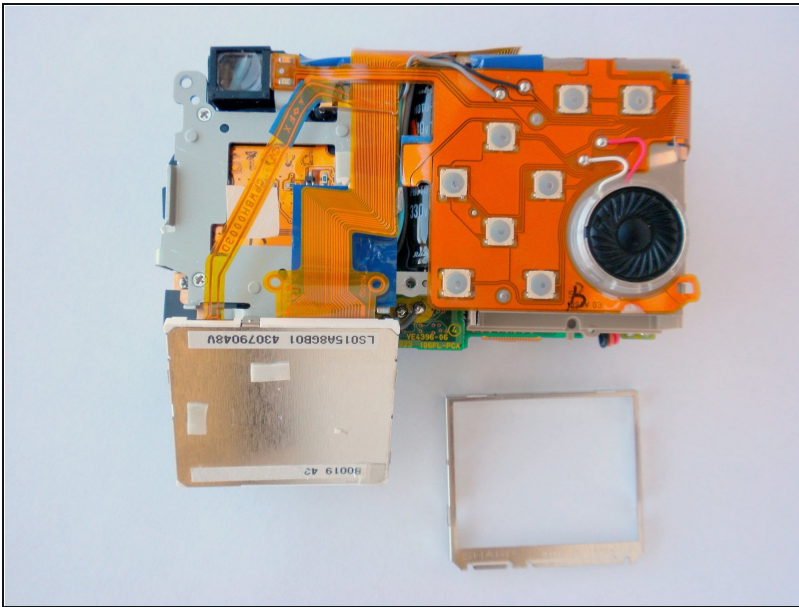


- Pry off the LCD screen from the top using an opening tool.

⚠ Do not pull the screen completely off because it will still be held on by two ribbon cables.



## Step 14



- This is what the camera will look like now that the LCD screen is removed.

---

To reassemble your device, follow these instructions in reverse order.