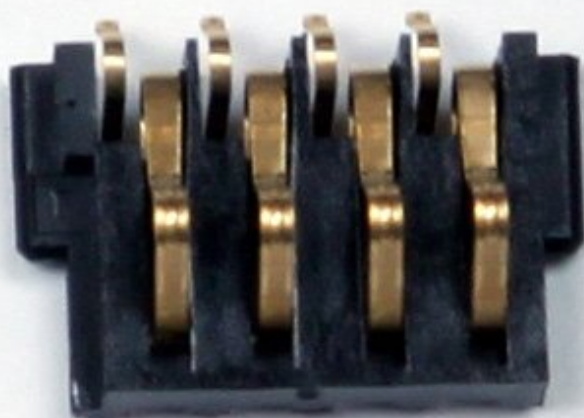




BlackBerry 7100g Battery Terminal Replacement

Written By: Kellan



INTRODUCTION

This guide describes how to replace the battery contact terminal, where the BlackBerry 7100g battery connects to the phone.



TOOLS:

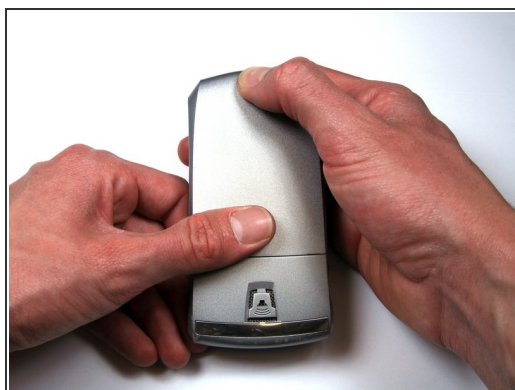
- [Spudger](#) (1)
 - [T6 Torx Screwdriver](#) (1)
 - [iFixit Opening Tools](#) (1)
-

Step 1 — Battery



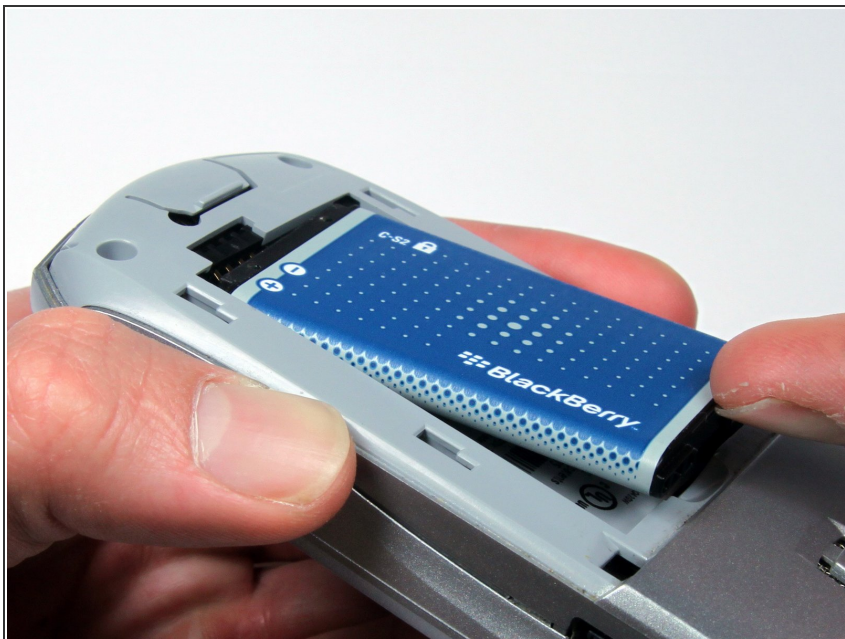
- Turn over your BlackBerry 7100g so that the back cover is facing up.
- Locate the battery cover release button near the bottom of the back panel.

Step 2



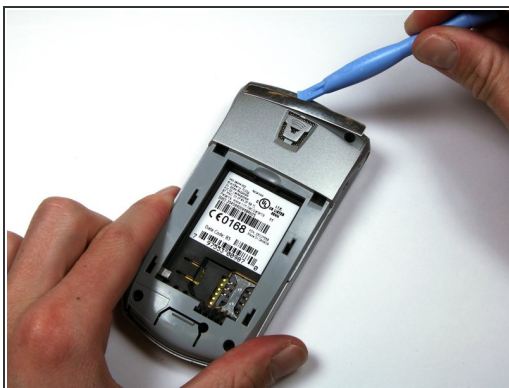
- Push down on the release button with one thumb.
- Slide the battery cover off with the other thumb.

Step 3



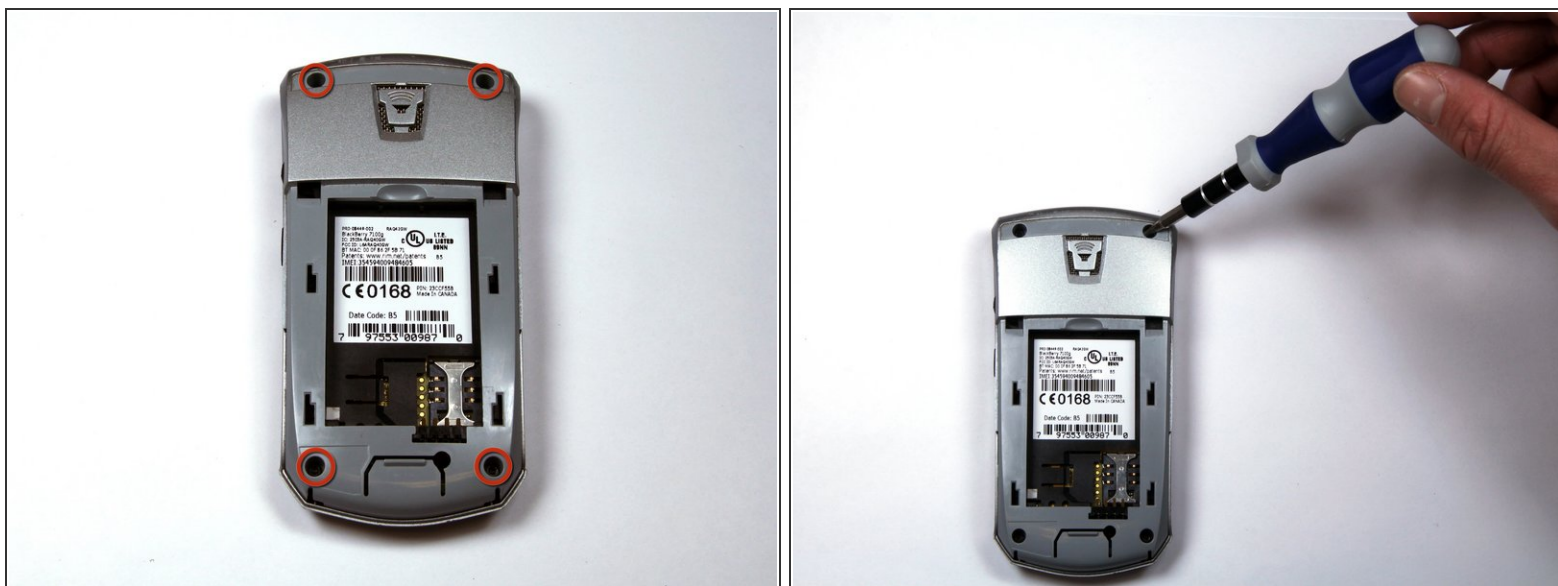
- Remove the battery from the battery housing by flipping up the top of the battery.

Step 4 — Housing



- Locate the silver strip near the top of your BlackBerry.
- Use a plastic opening tool to pry off the edge of the silver lining.
- Slide the tool along the length of the silver strip to completely remove it.

Step 5



i Do not lose the screws. They are quite small and can easily be misplaced.

- Locate and unscrew the four (4) screws using a T6 screwdriver.

Step 6



i The keypad cover may fall out of the housing when prying the housing apart.

- Tightly pinch the top of the front and back halves of the housing.
- Carefully pry the two halves of the housing apart.

Step 7



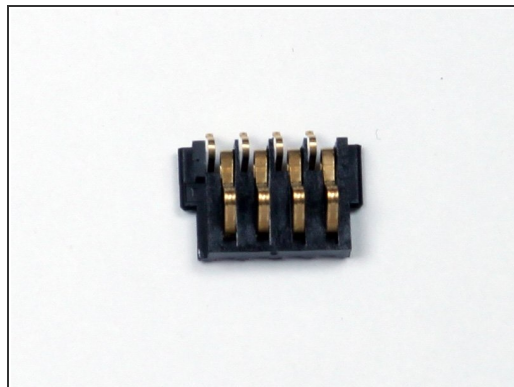
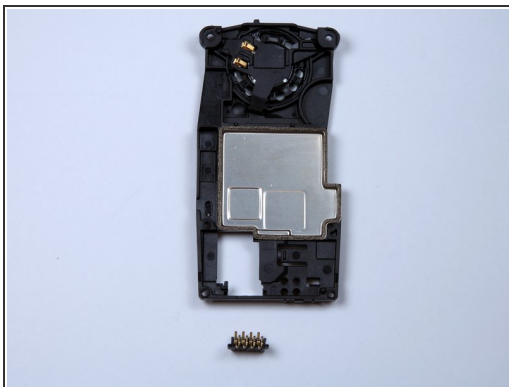
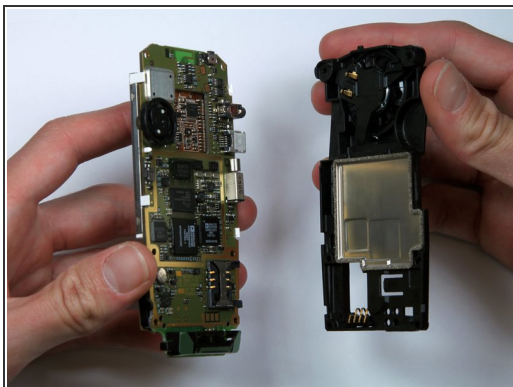
- You can now easily remove the "guts" of the phone from the housing.

Step 8 — Battery Terminal



- Remove the four screws holding the battery and speaker housing to the motherboard.

Step 9



- Once the battery housing is separated from the motherboard, the battery terminal will slide off the battery housing.

i The small plastic piece with four metal pins is the battery terminal shown in the third picture.

To reassemble your device, follow these instructions in reverse order.