



Toshiba Satellite L305-S5875 LCD Screen Replacement

Welcome to the Toshiba Satellite L305-S5875 LCD...

Written By: Joshua Lessard



INTRODUCTION

Welcome to the Toshiba Satellite L305-S5875 LCD Screen Replacement guide page. The ultimate goal of this page is to show you how to replace the 15.4" LCD screen on your Toshiba Satellite laptop. This guide will go step by step in explaining how to work your way to the screen, and then how to replace the screen once you're there. This guide uses both visual and written instructions to help you replace your old damaged screen with a brand new one.

TOOLS:

[iFixit Opening Tool](#) (1)
[2.5 mm Flathead Screwdriver](#) (1)
[Phillips #0 Screwdriver](#) (1)

PARTS:

[TOSHIBA SATELLITE L305-S5875
LAPTOP LCD SCREEN 15.4" WXGA
CCFL](#) (1)

Step 1 — Battery



- Close the laptop lid and flip the laptop over.
- Switch the lock button on the left to the unlock position. (The unlock position is to the left side.)

Step 2



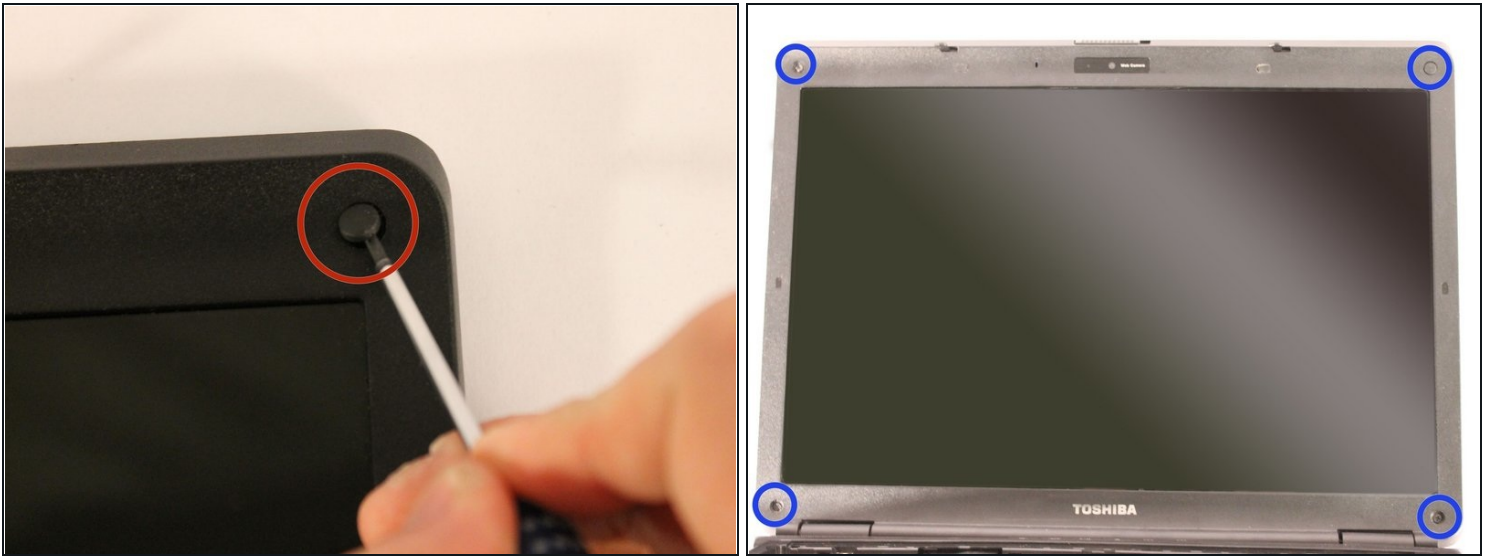
- Push the release button to the right.
- Hold the release button to the right and lift the battery out of its housing.

Step 3 — LCD Screen



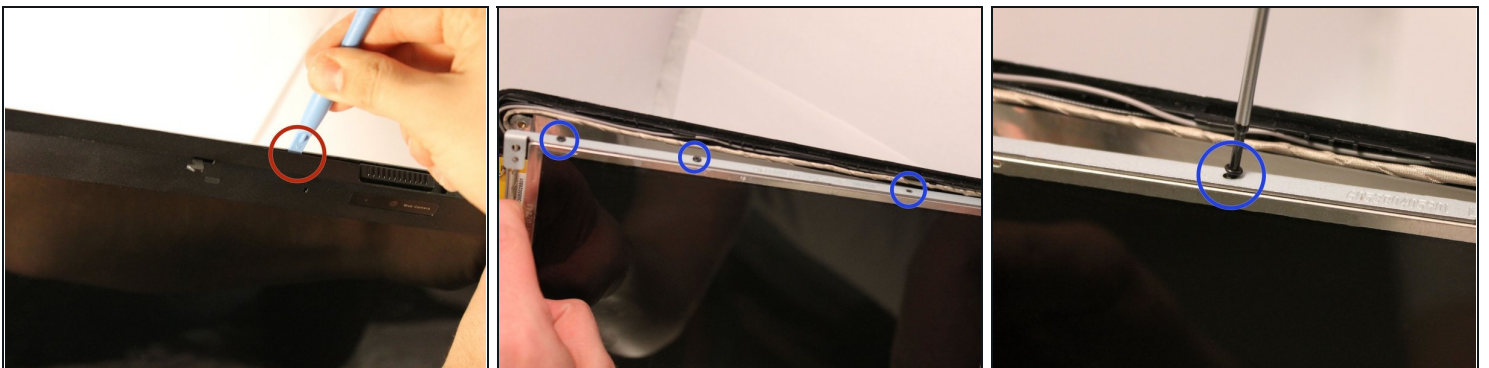
- Open the laptop so that you can see the screen.

Step 4



- Remove the four rubber inserts from the four corners of the screen.
- Once removed, unscrew and remove the four screws found beneath the four rubber inserts.

Step 5

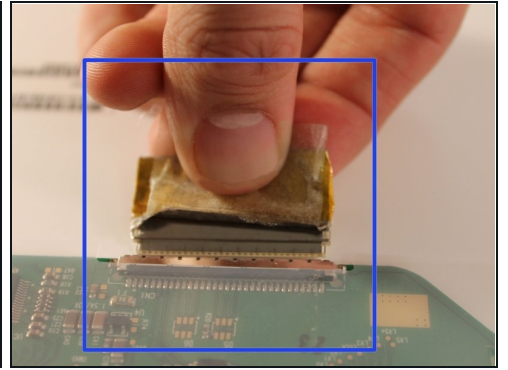
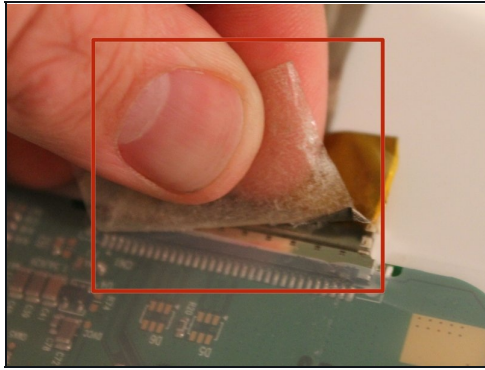
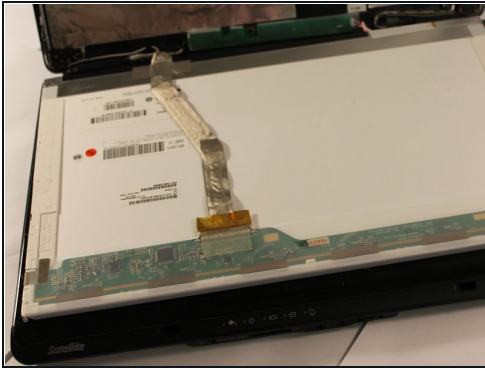


- Use the plastic opening tool to separate the front panel of the laptop from the back panel, pulling the front panel off the laptop.
- Gently pull the back panel approximately 1 inch away from the screen.

⚠ Warning: Following step will detach screen from casing. Use caution.

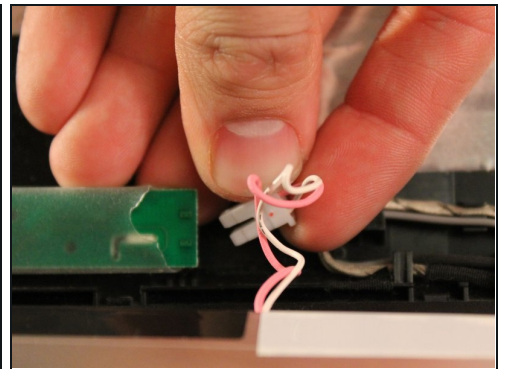
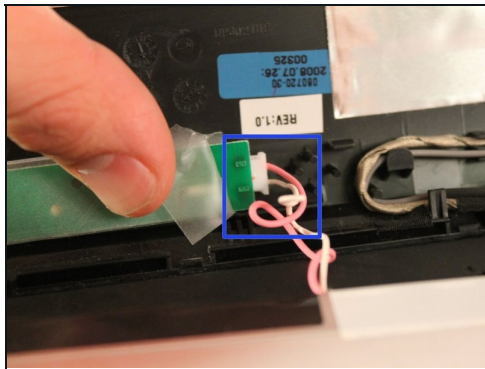
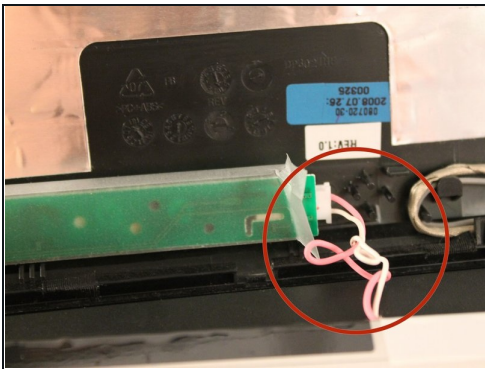
- *Unscrew and remove the 4 screws on the left and right side of the screen; 8 screws in total.*

Step 6



- Lay screen down on keyboard.
- On the back of the screen, locate the ribbon cable that connects the screen to the computer. Remove the tape from the cable if it is present.
- Carefully remove the ribbon cable by pulling it out of its socket.

Step 7



- At the bottom of the screen, locate the pink and white wires.
- Unplug the connector from the circuit board by gently pulling it out.

Step 8



- Congratulations, you have just removed your screen!

Now that you have removed the damaged screen, it is time to replace it with the new screen.

Follow these steps in reverse order to reassemble your laptop.

You have completed the LCD screen replacement guide for the Satellite L305-S5875. Great job!