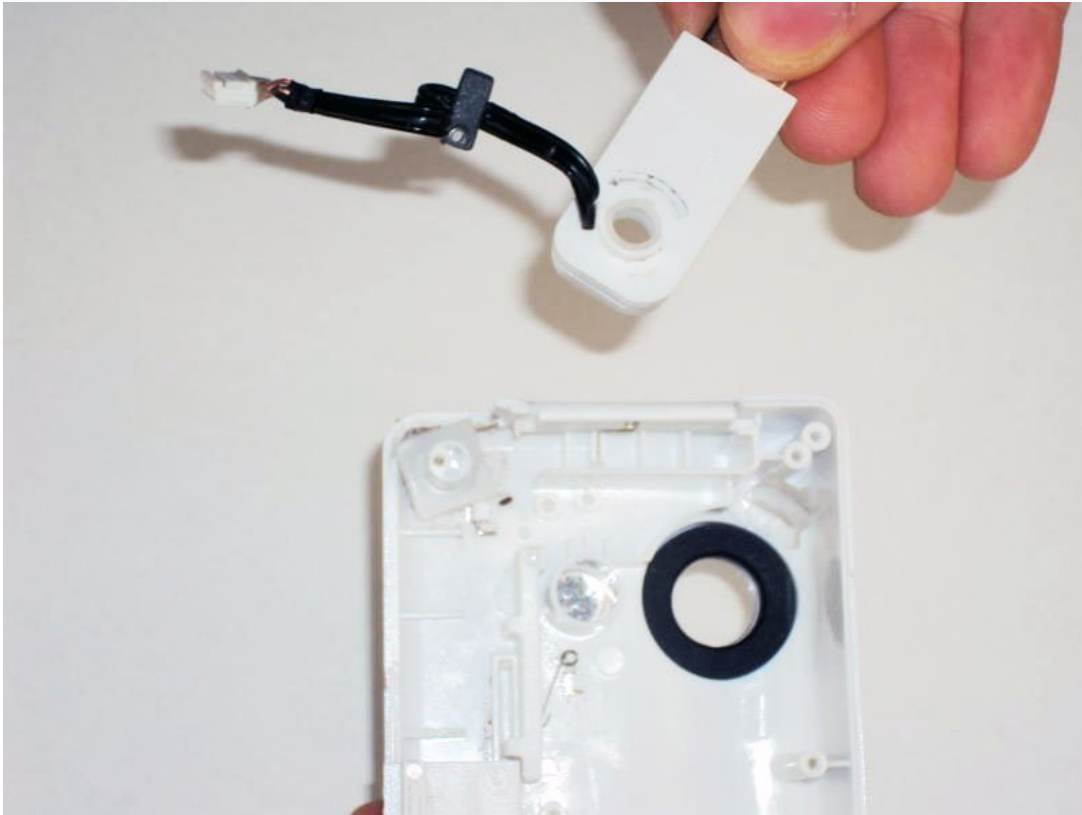




# Disassembling Flip Video USB Port

This guide will show you how to open the outer...

Written By: Elizabeth



# INTRODUCTION

This guide will show you how to open the outer shell of your Flip Video.



## TOOLS:

Phillips #00 Screwdriver (1)

Tweezers (1)

## Step 1 — Outer Shell



-  Turn off the device and take the batteries out.
- Remove metal sticker under the LCD screen with a spudger.
  -  This may require a large force to pry off the glued sticker.

## Step 2



- Remove the 4 gray screw caps with the spudger. These cover the screw heads and protect from dirt or grime.

## Step 3



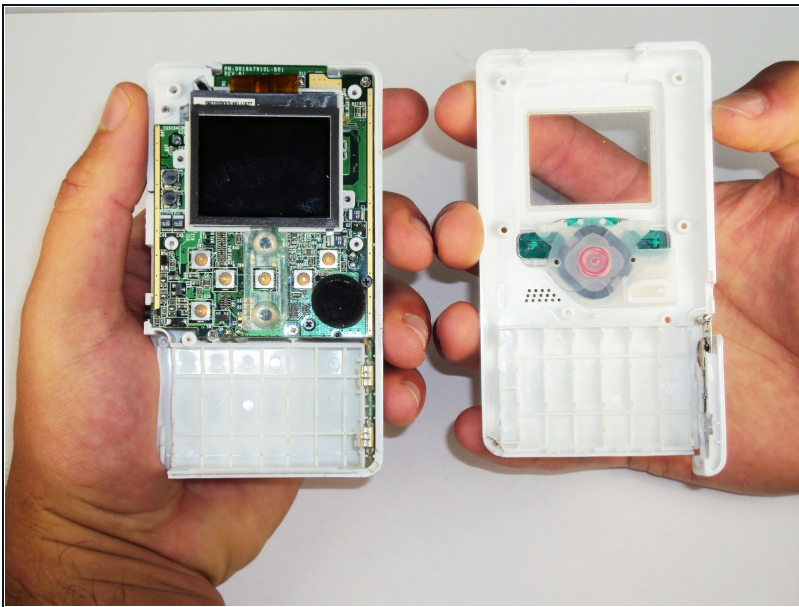
- Remove the 5 10mm screws with the #00 Phillips screwdriver. These connect the back of the outer shell to the front of the outer shell.

## Step 4



- Open battery door. This can be done by gently depressing and sliding the battery down downward.

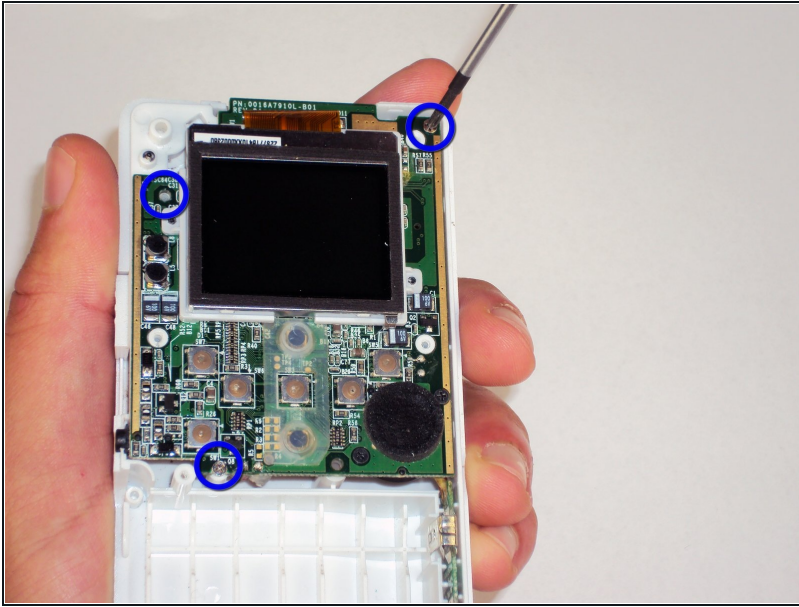
## Step 5



- Use the spudger to separate outer shells.
- The spudger must be inserted between the shell halves to pry the edges apart.
- Slowly work around the outside to separate the halves.

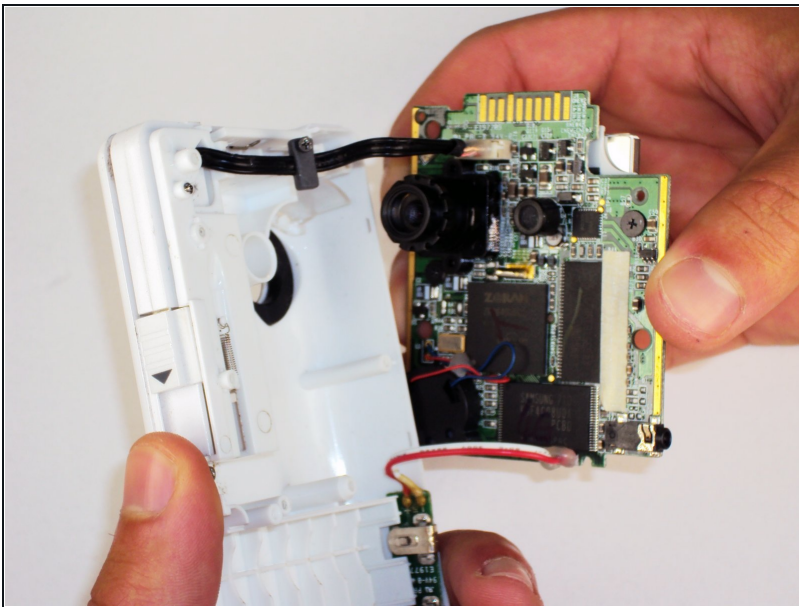


## Step 6 — Circuit Board



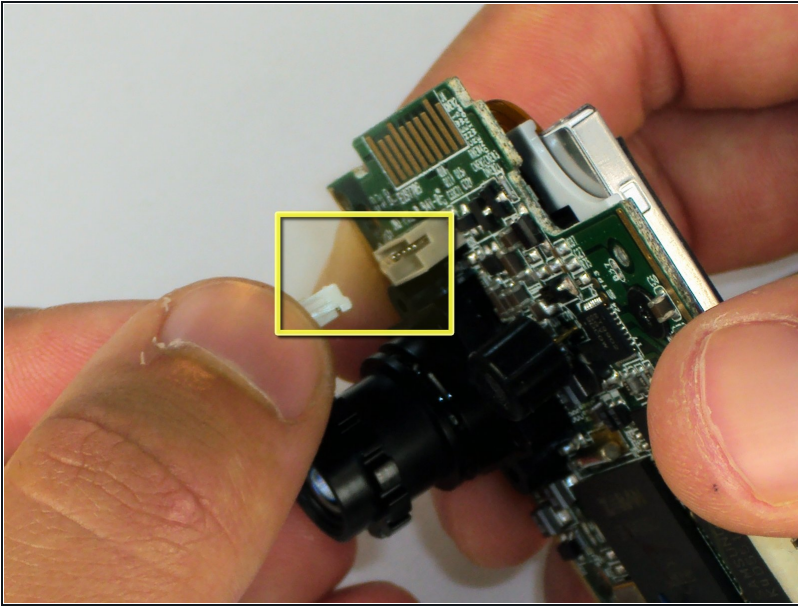
- Remove the 3 5mm screws securing the circuit board to the front shell with the #00 Phillips screwdriver.

## Step 7



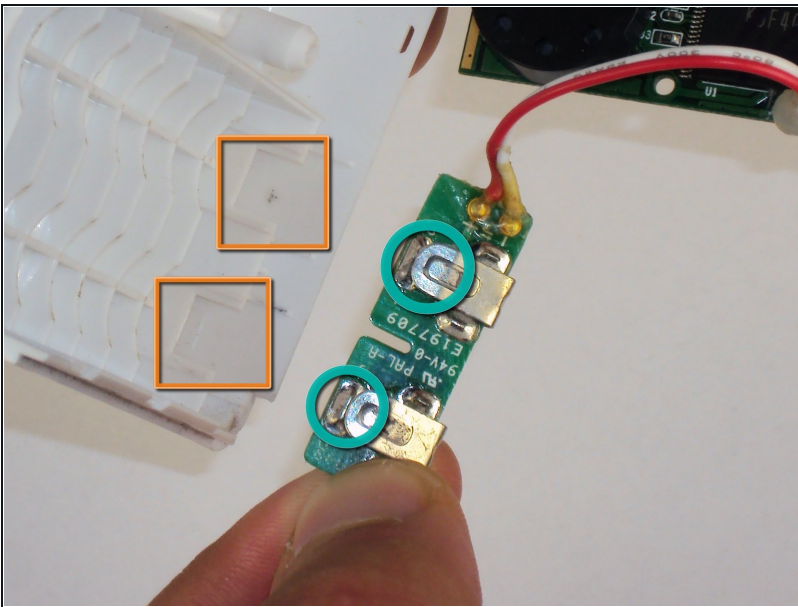
- Slowly lift the left side of the circuit board.  
⚠ Do not attempt to remove the circuit board completely yet. It is still connected to the device.

## Step 8



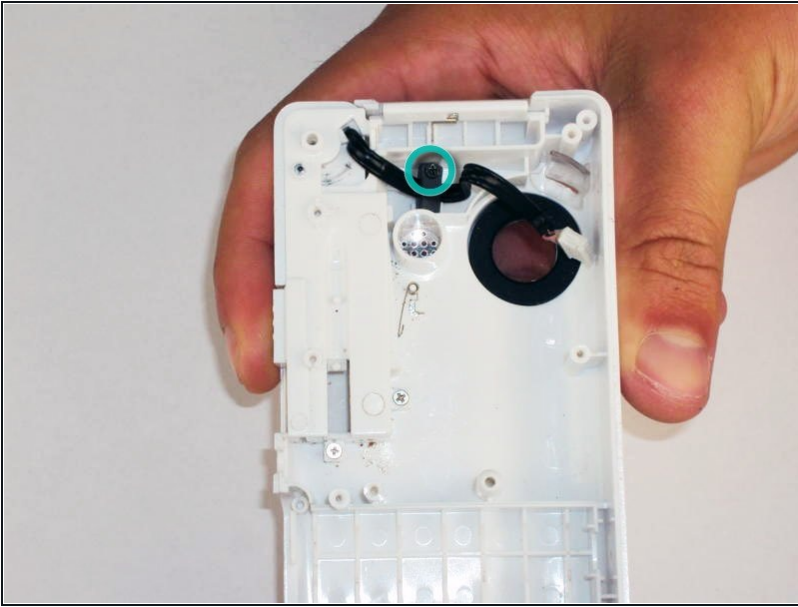
- Disconnect the USB port cable from the back side of the circuit board.

## Step 9



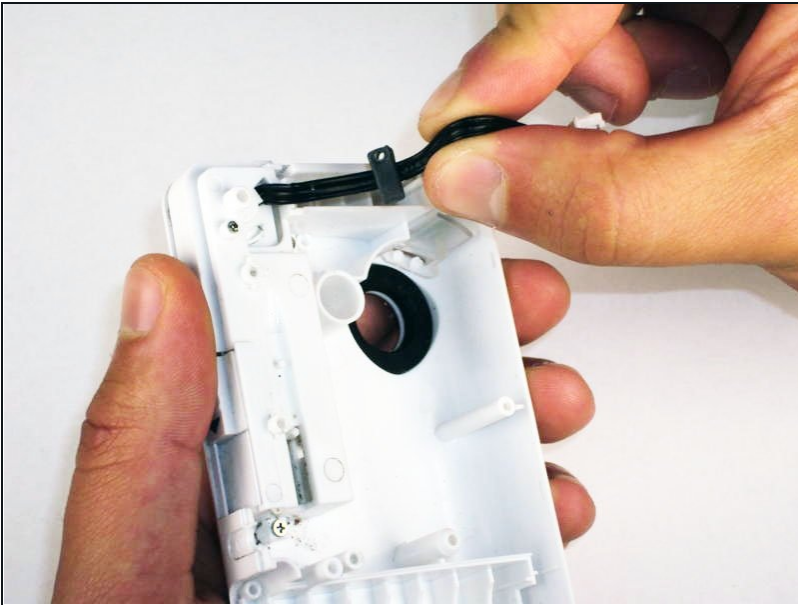
- Slide out the battery contacts.
  - Battery contacts
  - Slot where battery contacts were located

## Step 10 — USB Port



- Remove black 3mm screw that secures wire to outer shell with #00 Phillips screwdriver.

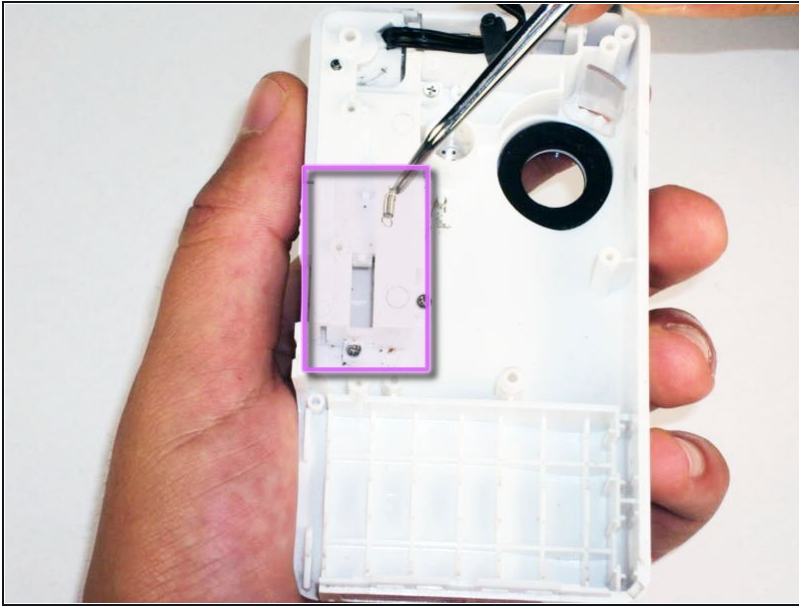
## Step 11



- Lift wire out of the outer shell slot.
- The wire mount should stay attached to the wire.

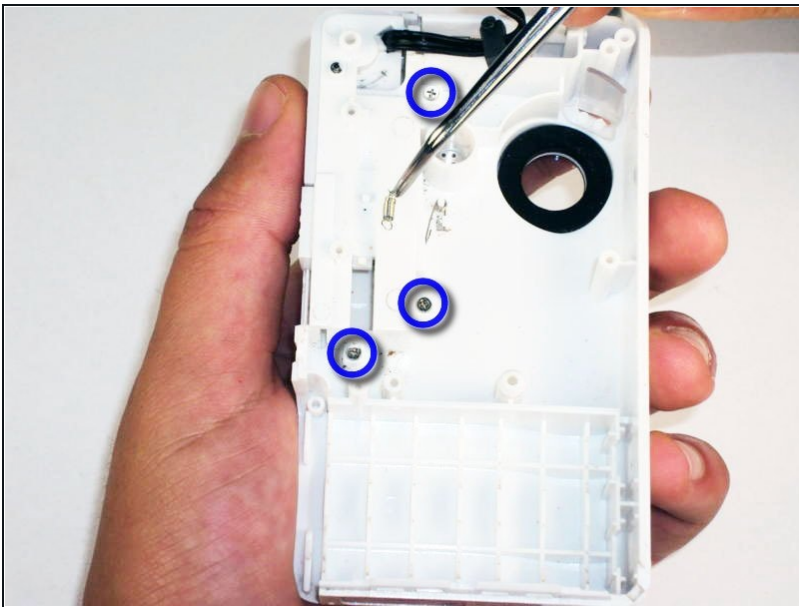


## Step 12



- Use [tweezers](#) to remove the spring that holds the port door shut.
- ⚠ Make sure the spring is firmly grasped by the tweezers so that it does not shoot off of the case.

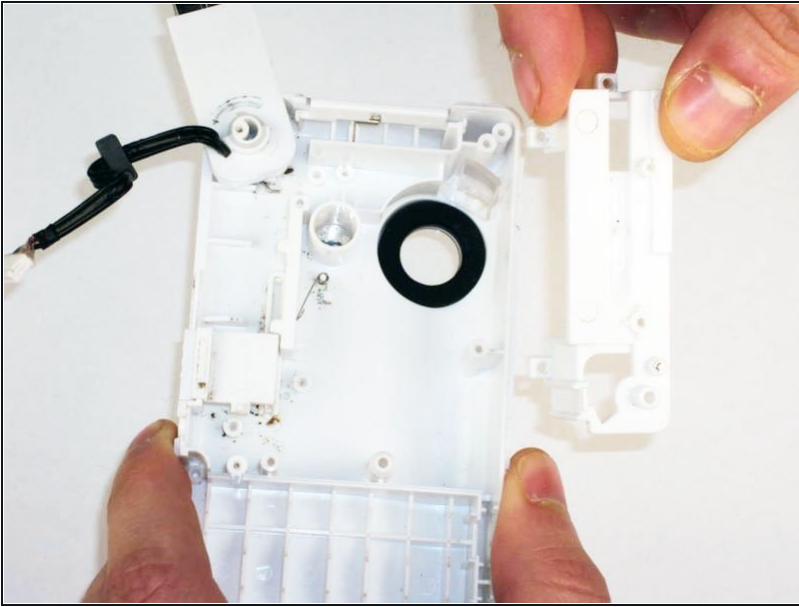
## Step 13



- Remove the 3 screws securing USB port cover to the outer case with the #00 Phillips screwdriver.

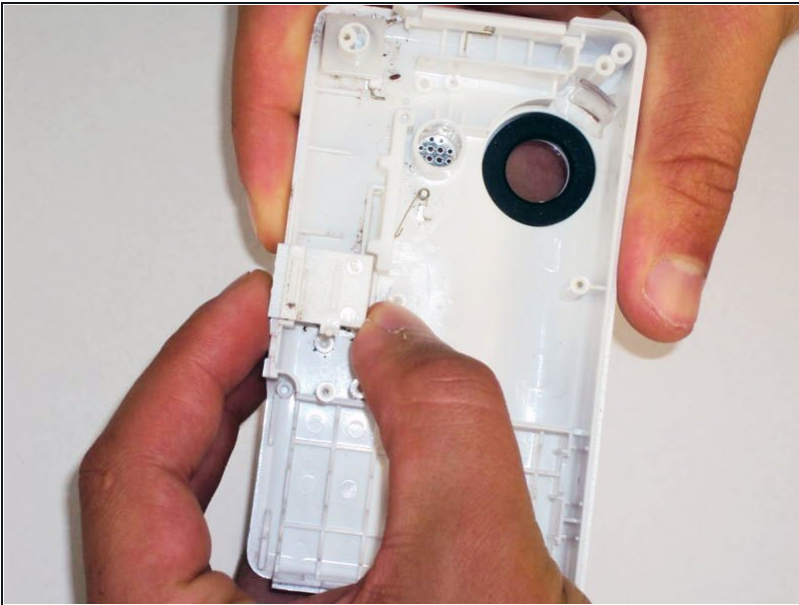


## Step 14



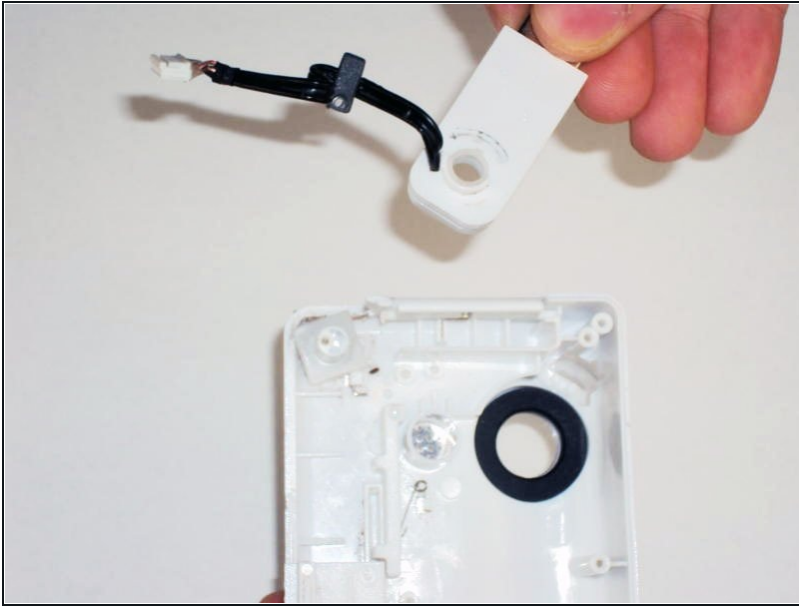
- Remove the USB port cover.

## Step 15



- Remove the USB slider.

## Step 16



- Lift out the USB port slowly.  
⚠ Since the hinge is spring loaded, be careful that no pieces fall out when the port is lifted.

---

To reassemble your device, follow these instructions in reverse order.