

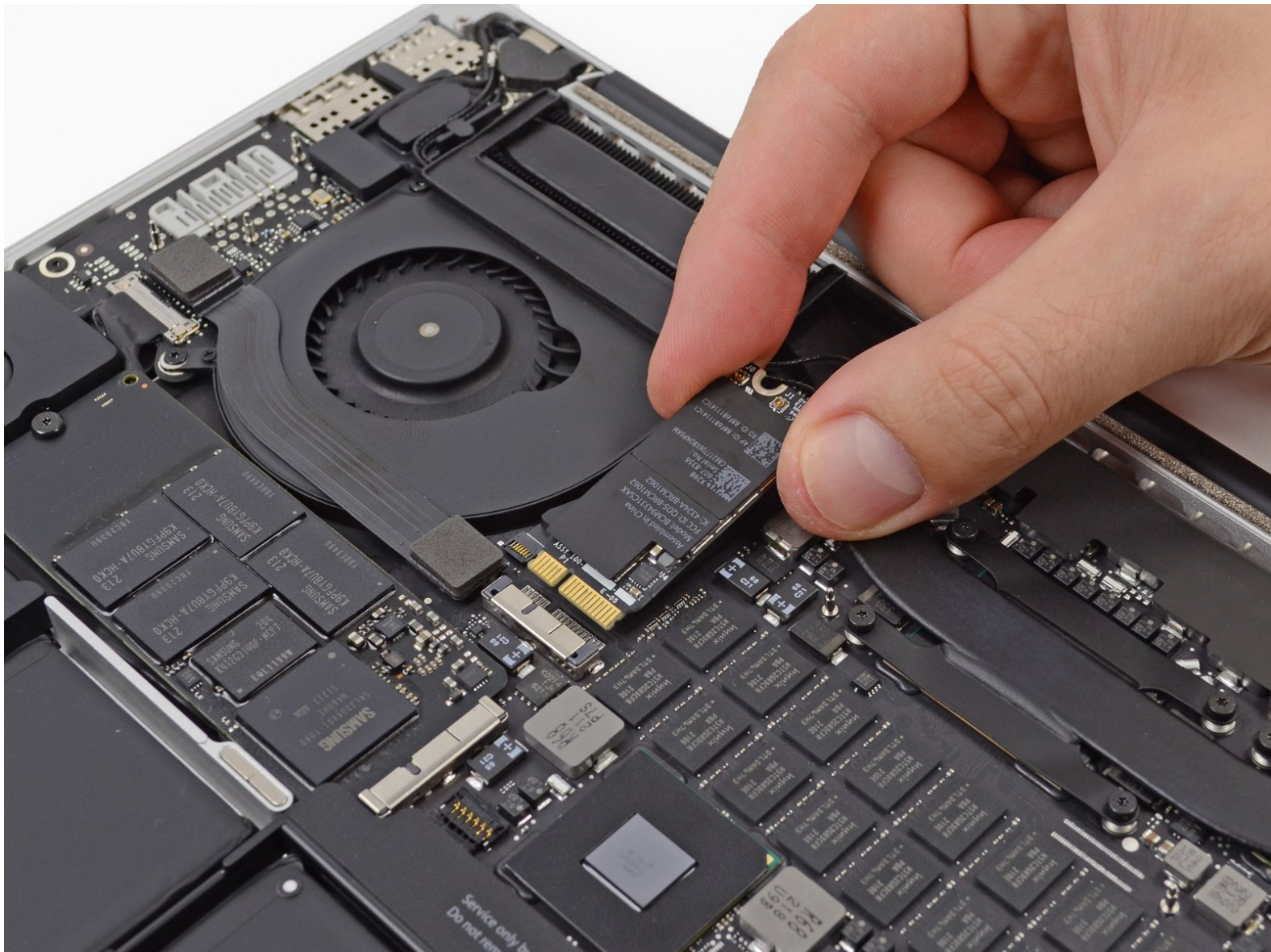


# MacBook Pro 15" Retina Display Late 2013

## AirPort Board Replacement

Replace the AirPort Board in your MacBook Pro 15" Retina Display Late 2013.

Written By: Andrew Optimus Goldheart



# INTRODUCTION

Having connectivity issues? Use this guide to replace the AirPort board.



## TOOLS:

- [MacBook Pro and Air 5-Point Pentalobe Screwdriver](#) (1)
- [Spudger](#) (1)
- [T5 Torx Screwdriver](#) (1)



## PARTS:

- [MacBook Pro 13" and 15" Retina \(Late 2013\) Airport/Bluetooth Board](#) (1)

## Step 1 — Lower Case



- Remove the following P5 pentalobe screws securing the lower case to the MacBook Pro:
  - Eight 3.0 mm
  - Two 2.3 mm

## Step 2



- Lifting from the edge nearest the clutch cover, lift the lower case off the MacBook Pro.
- Set the lower case aside.

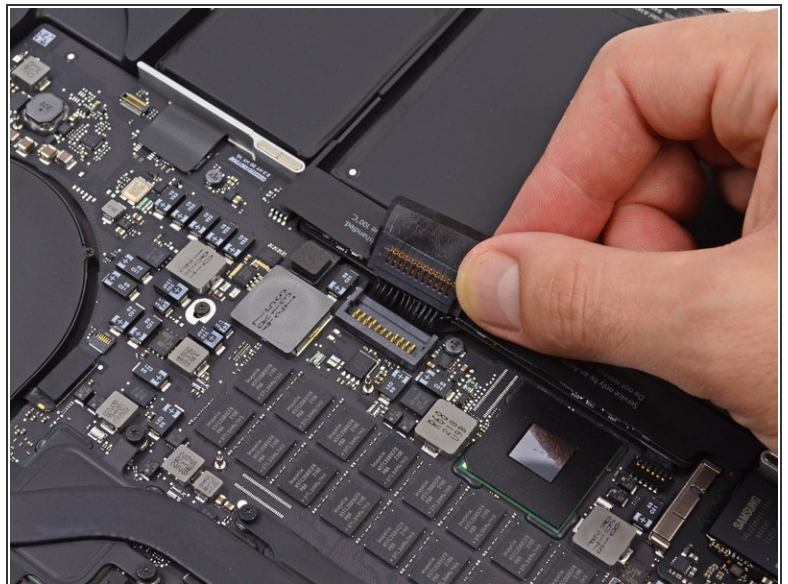
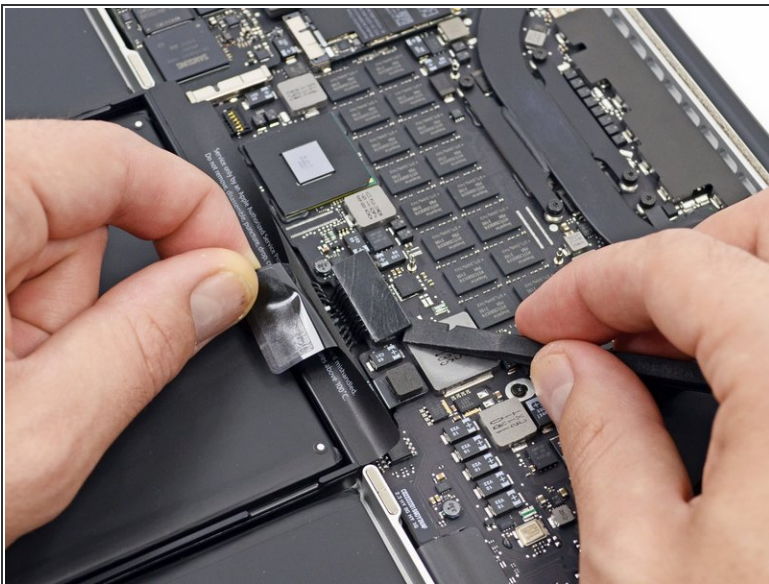


## Step 3 — Battery Connector



- Peel back the warning label covering the battery connector.

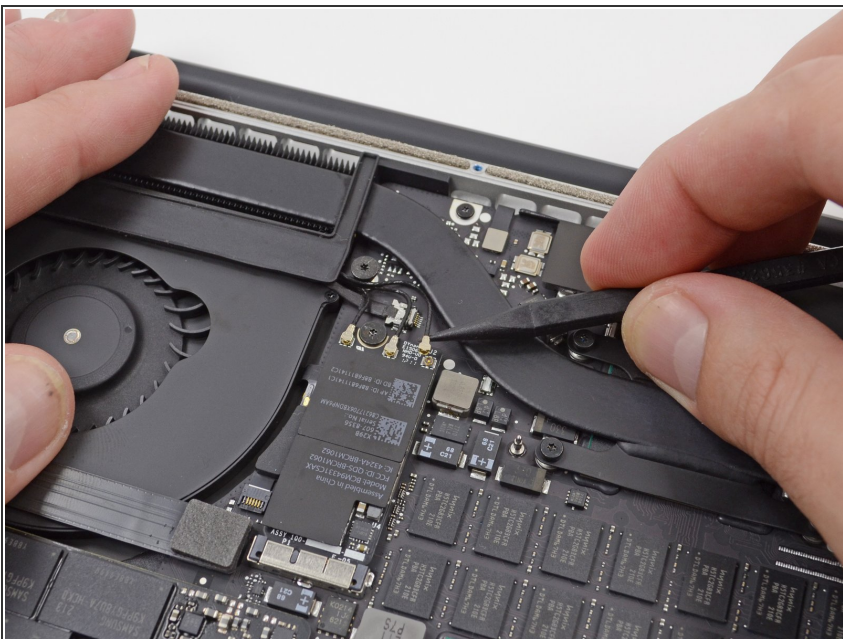
## Step 4



- Using the flat end of a spudger, gently pry the battery connector straight up out of its socket on the logic board.
- Bend the battery cables back and out of the way, ensuring that the battery connector doesn't accidentally make contact with the logic board.

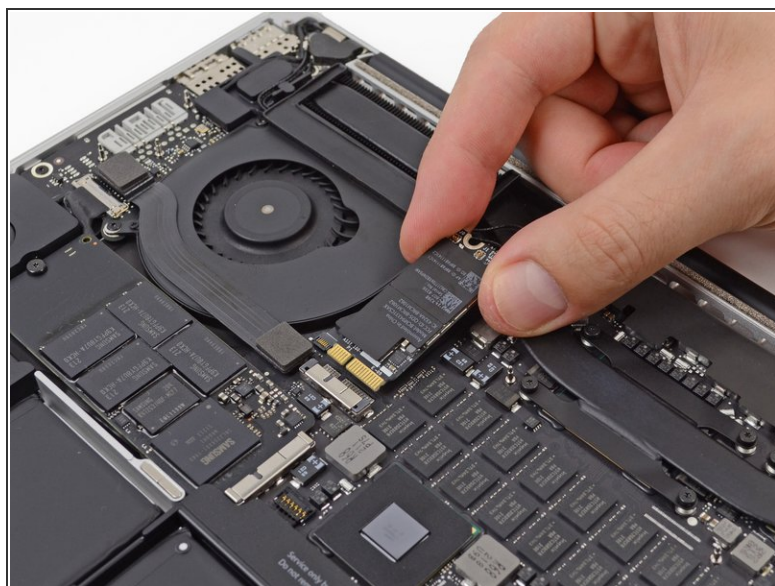
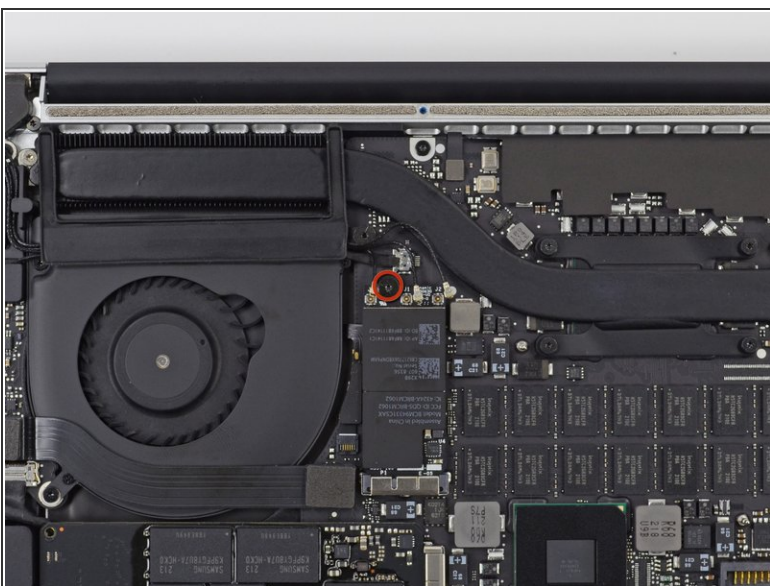


## Step 5 — AirPort Board



- Use the tip of a spudger to detach the three antenna connectors up from their sockets on the AirPort board.

## Step 6



- Remove the single 2.9 mm T5 Torx screw securing the AirPort board to the logic board.
- Grasp the edges of the board and slide it out from its connector.
- Lift and remove the AirPort board.

To reassemble your device, follow these instructions in reverse order.