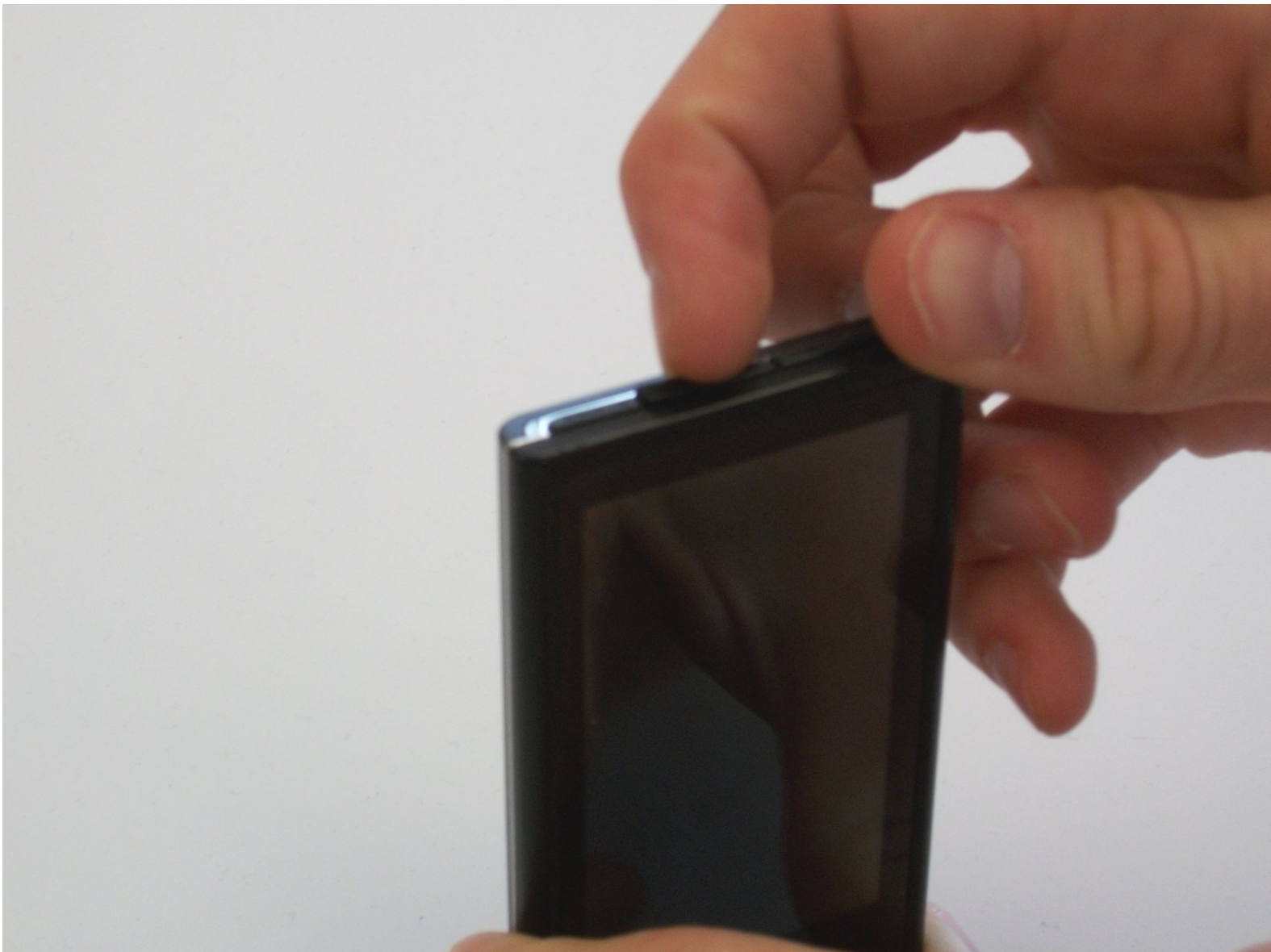




Samsung YP-P3 Case Backplate Replacement

This guide covers replacing the backplate on the Samsung YP-P3 media player.

Written By: Andrew Groeneveld



**TOOLS:**

- [Phillips #000 Screwdriver](#) (1)

**PARTS:**

- [Samsung YP-P3 Case Backplate](#) (1)

Step 1 — Case Backplate



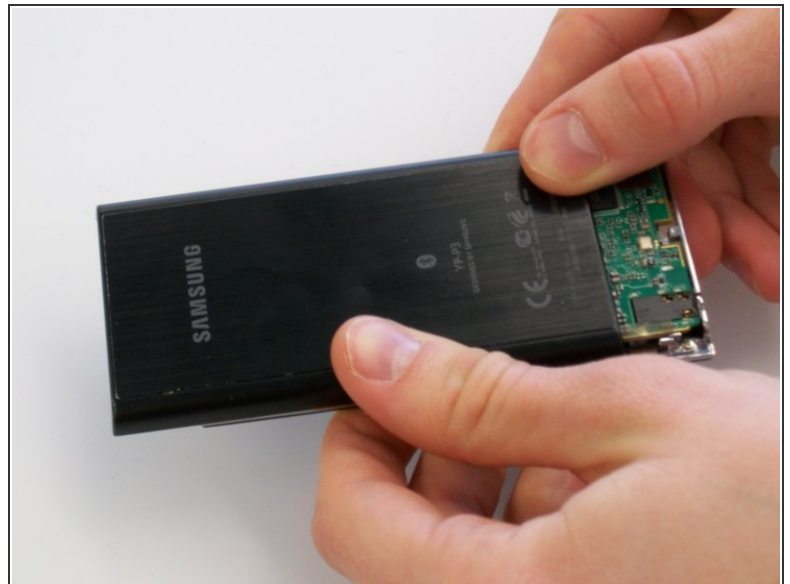
- Pry up the small black piece of plastic located between the volume [-] button and the HOLD/ON button.

Step 2



- Underneath the piece of plastic you just removed, there is a small screw (Phillips #000, 2.0 mm long). Use a Phillips #000 screwdriver to remove it.

Step 3



- Push on the backplate with both thumbs, sliding it towards the top of the device.
- Once it begins to move, lift up slightly. You can then slide the backplate all the way off.

To reassemble your device, follow these instructions in reverse order.