



# Sony Vaio PCG-F420 Display Replacement

If the display is damaged and does not function...

Written By: Therin Irwin



# INTRODUCTION

If the display is damaged and does not function properly, you should remove it and get it repaired or replaced.

**CAUTION: Static electricity in your body can ruin your computer. Use an anti-static wristband.**

---

## TOOLS:

Phillips #00 Screwdriver (1)

Spudger (1)

Tweezers (1)

---

## Step 1 — Battery



- The battery is located on the left side of the laptop, as shown by the red circle.
- Make sure the laptop is disconnected and turned completely off.

## Step 2



- ❗ Remove the battery by following these steps.
- Pull the plastic cover down (indicated by the arrow on the cover) and then swing it upwards to reveal the battery compartment.
- The battery can now be removed by pulling it.

## Step 3 — Keyboard



- Use your Philips #00 screwdriver to unscrew the small screw counterclockwise. This screw is for the audio/visual jacks on the left side of the laptop.



## Step 4



- Unlock the cover between the keyboard and screen.
- Gently slide it to the right and lift it up.
- Exercise caution to avoid excessive force, as wires are connected.
- ⓘ Be mindful not to pull the keyboard too forcefully as it remains connected to wires, which we will address in the next step.

## Step 5



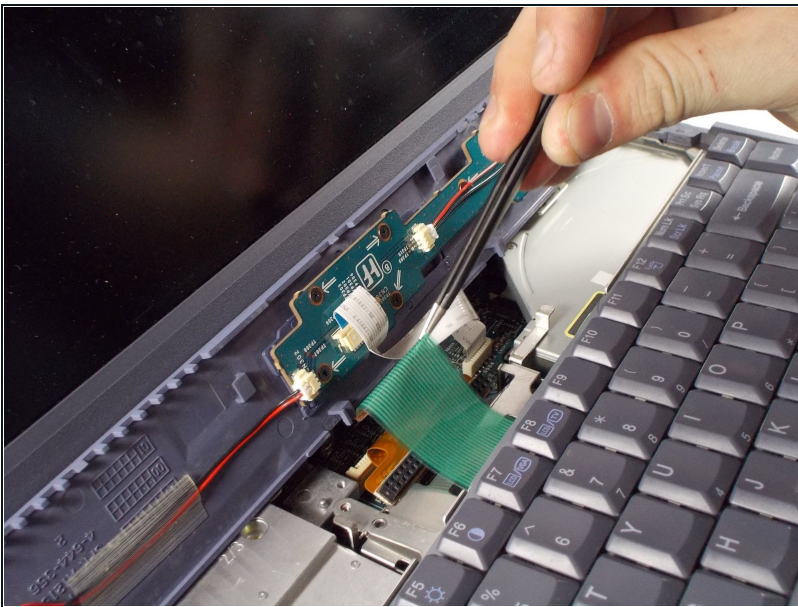
- Lift up the cover and lean it against the display so it is out of the way for the rest of the process.
- Remove the small screw above the F6 key on the keyboard. Place screw in container to ensure it won't be lost.

## Step 6



- Find the green ribbon as indicated in the picture by the red circle. This is what connects the keyboard to the motherboard.

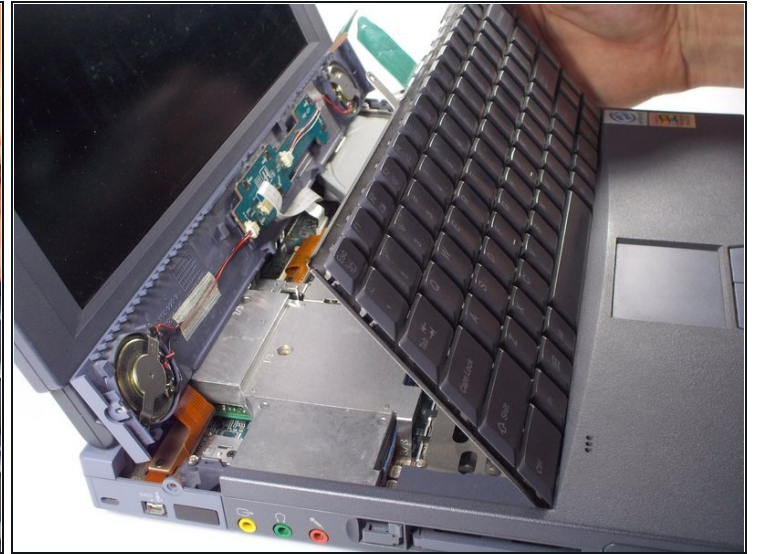
## Step 7



- Carefully unplug the ribbon cable using a pair of [tweezers](#).
- Lift up the white bar near the connection to the motherboard, and lightly lift the ribbon to release it from the motherboard.



## Step 8



- Now, pull on the ribbon cable, and it will detach from the motherboard.
- ① Your keyboard is now safely detached, allowing for necessary repairs or replacements.

## Step 9



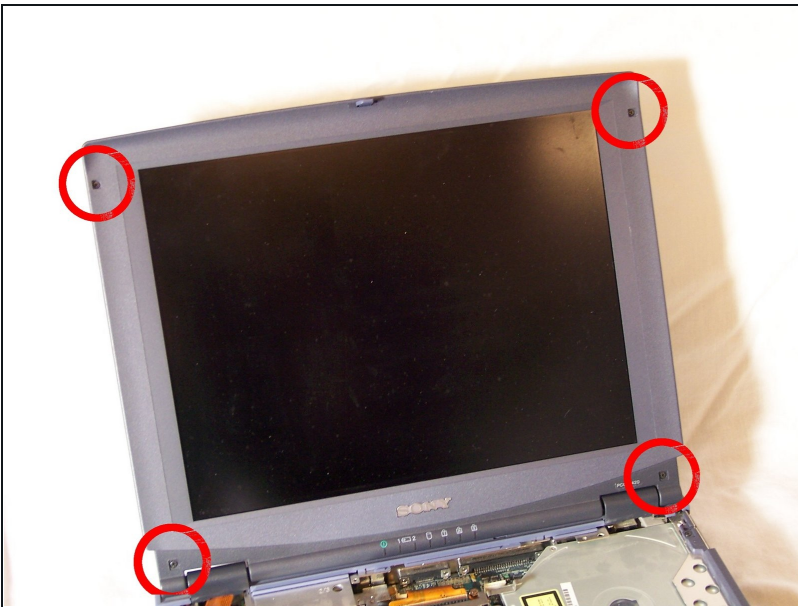
- Your keyboard is now safely detached. Necessary repairs or replacements can be made from here.

## Step 10 — Display



- Use [tweezers](#) to remove the rubber covers on the four screws at the corners near the display.

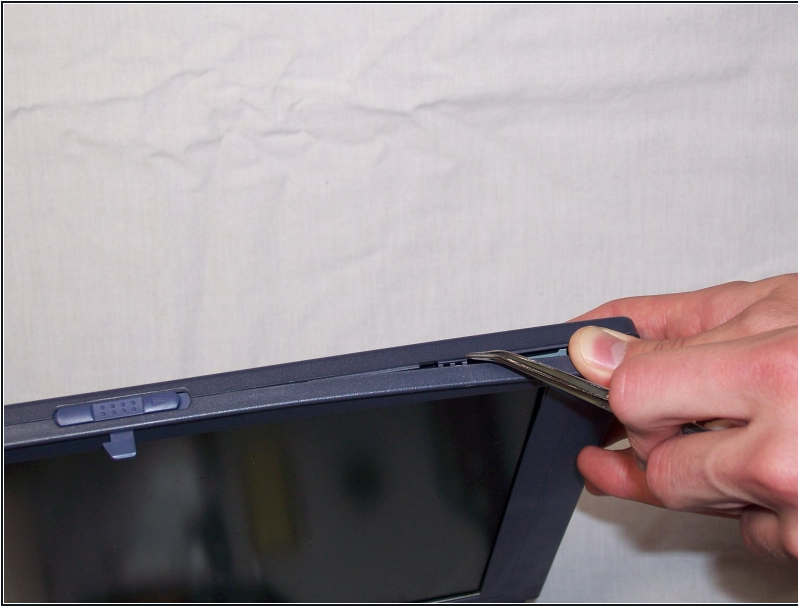
## Step 11



- With the screwdriver, unscrew the four screws that attached the front bezel panel with the display assembly, as shown in the image.

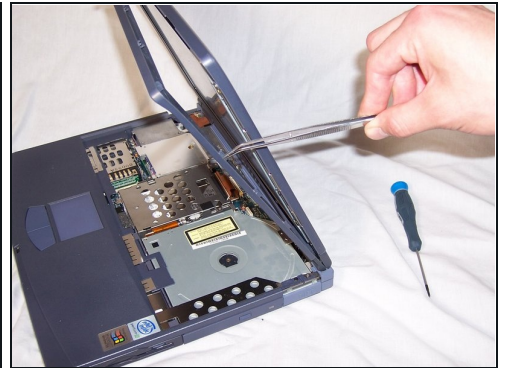


## Step 12



- Using a spudger or another flat-headed tool, pry away the front bezel panel from the display assembly.
- Apply pressure carefully while placing the spudger on the seam connecting the front and rear bezels.
- Clips attaching the two panels should start to come apart.

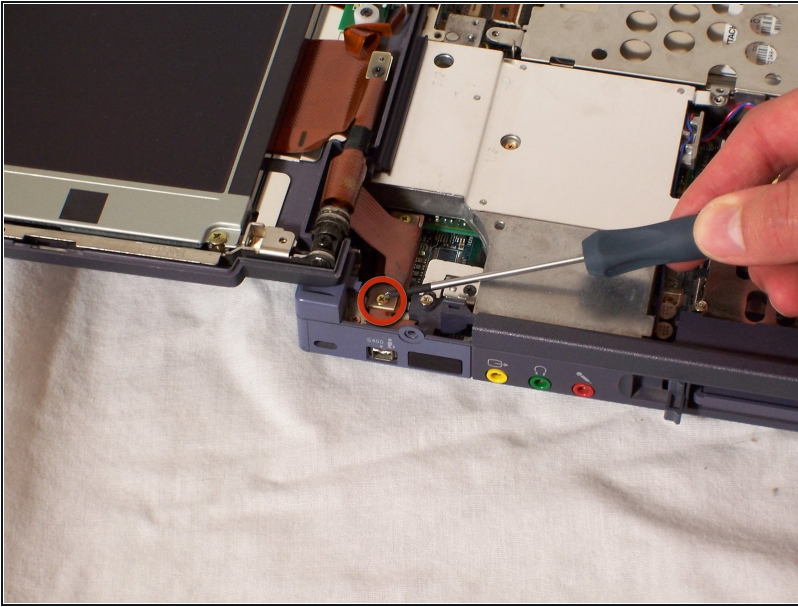
## Step 13



- ⓘ There are a total of 14 clips holding the two bezel panels together. Be careful when unclipping all of them. After all the clips are off, the bezel will just pop right off the display panel.
- Remove all 14 clips and place them in a safe area.
  - Once all 14 clips are removed the bezel can be removed.

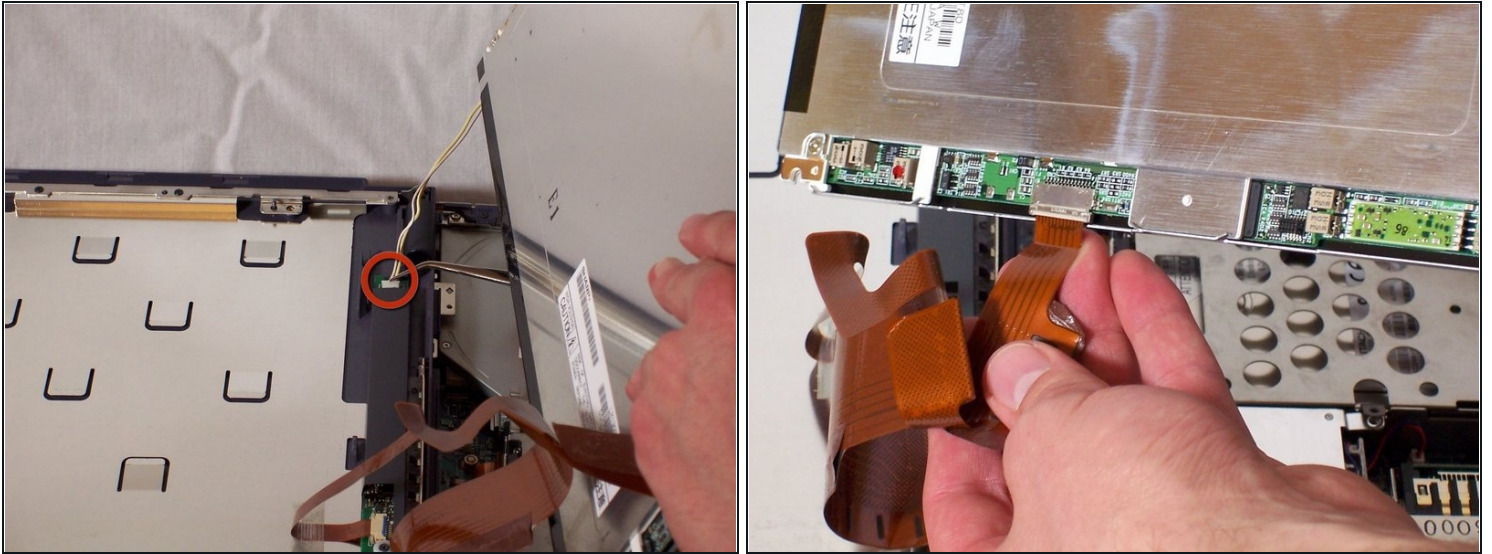


## Step 14



- Find and unscrew the four gold Philips-head screws that attach the display to the rear bezel of the display assembly.
- Take care not to immediately remove the display, as cables are still attached.

## Step 15



- Locate the ribbon cable slot and the two-pin backlight cable. These are essential connections for the display.
- Gently, but firmly, grasp the ribbon cable near its connection point.
- Use steady, even pressure to pull the ribbon cable out of its socket. Be careful not to use excessive force.
- Similarly, disconnect the two-pin backlight cable with gentle and controlled force. Ensure you disconnect both cables securely to avoid any damage during removal.

---

To reassemble your device, follow these instructions in reverse order.