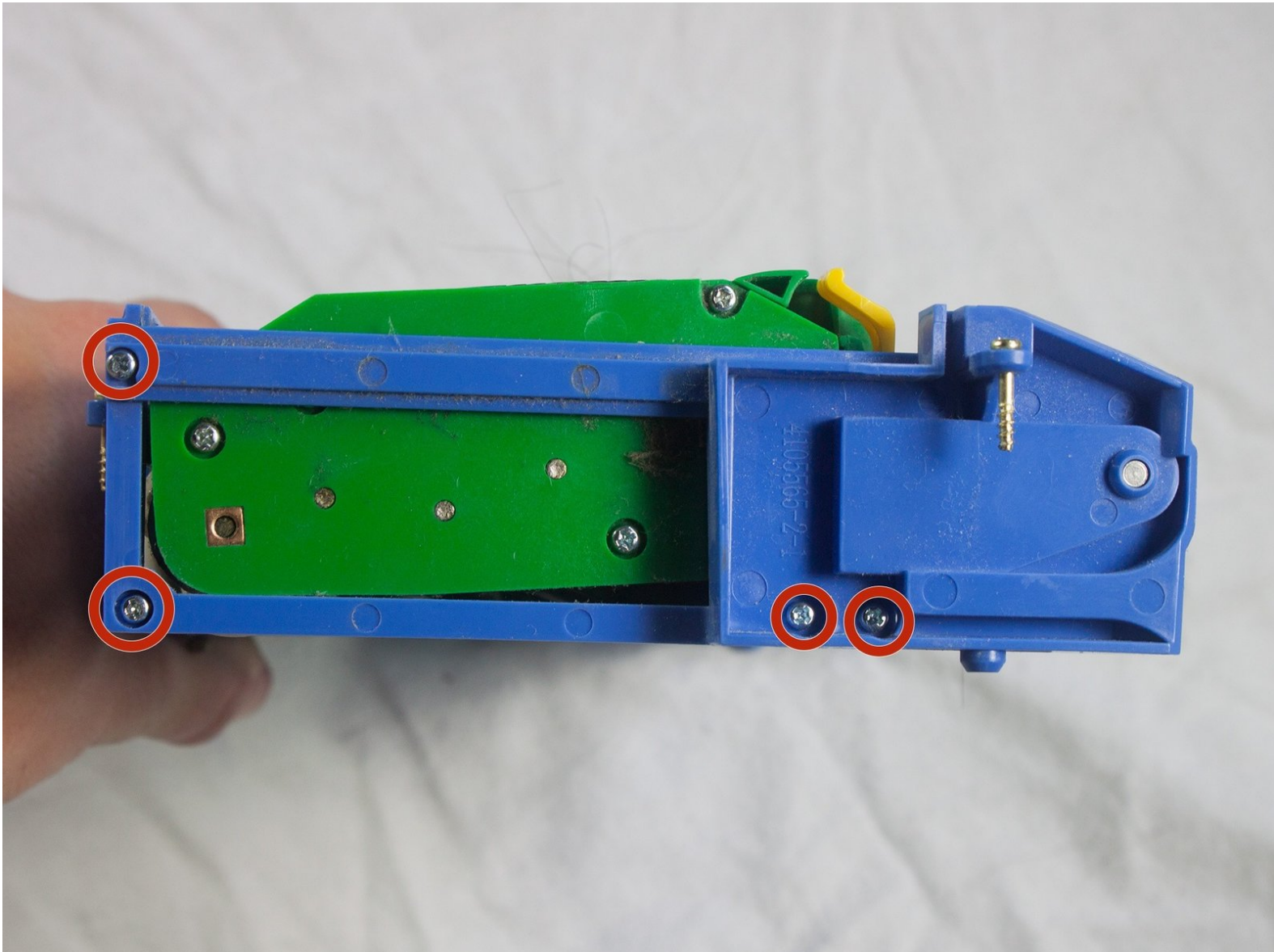




# iRobot Roomba 551 Main Brush Motor Replacement

Remove the main brush motor from your Roomba.

Written By: John McTigue



---

# INTRODUCTION

This guide explains how to remove the main brush motor from your Roomba.



## TOOLS:

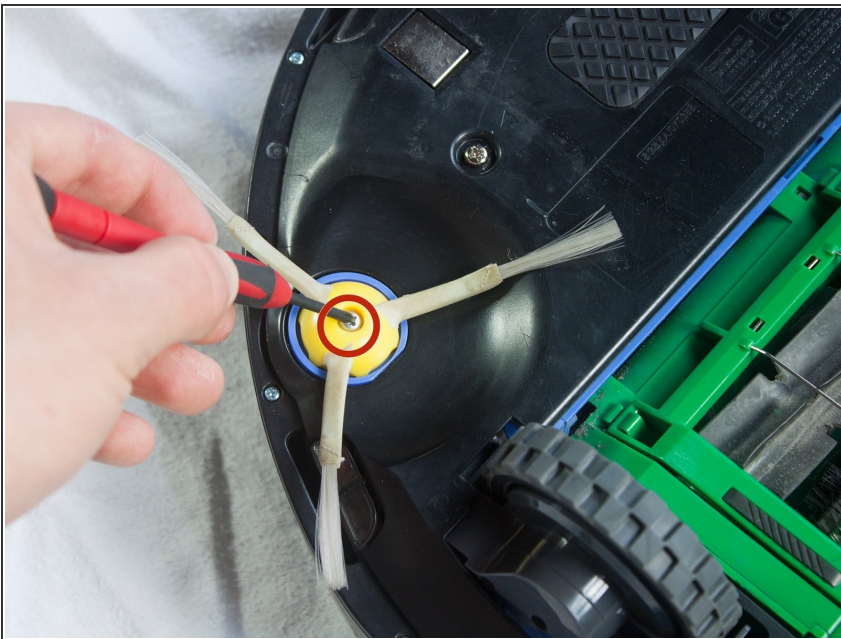
- [Phillips #1 Screwdriver](#) (1)
  - [Phillips #2 Screwdriver](#) (1)
-

## Step 1 — Side Brush



- Place your Roomba upside-down on a hard surface.

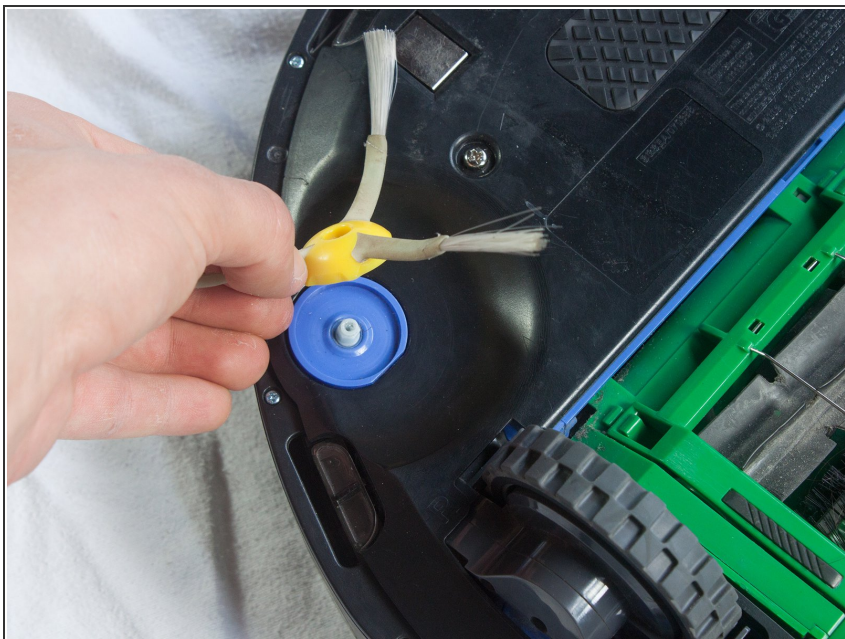
## Step 2



- While holding the side brush in place, use a Phillips #1 screwdriver to remove the 4.5mm screw from the center of the brush.

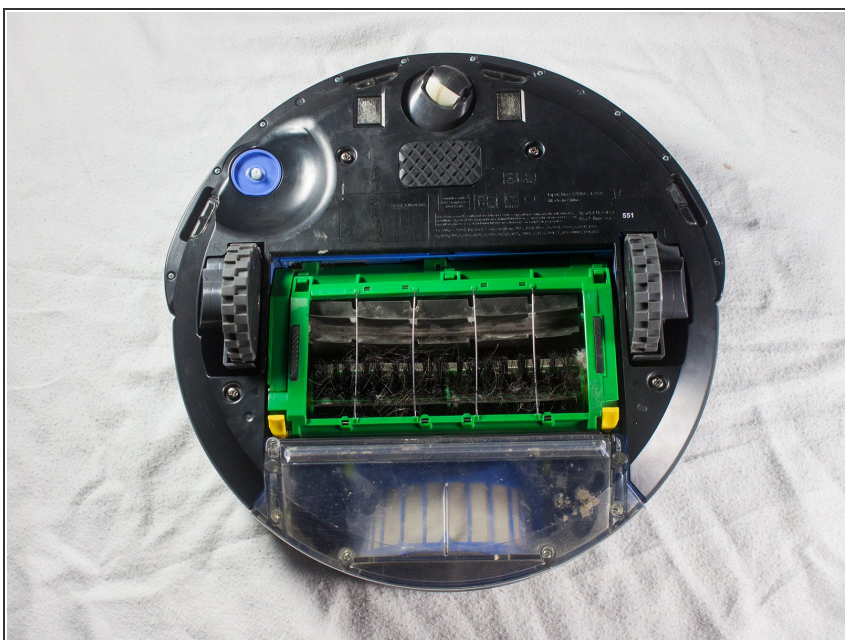


### Step 3



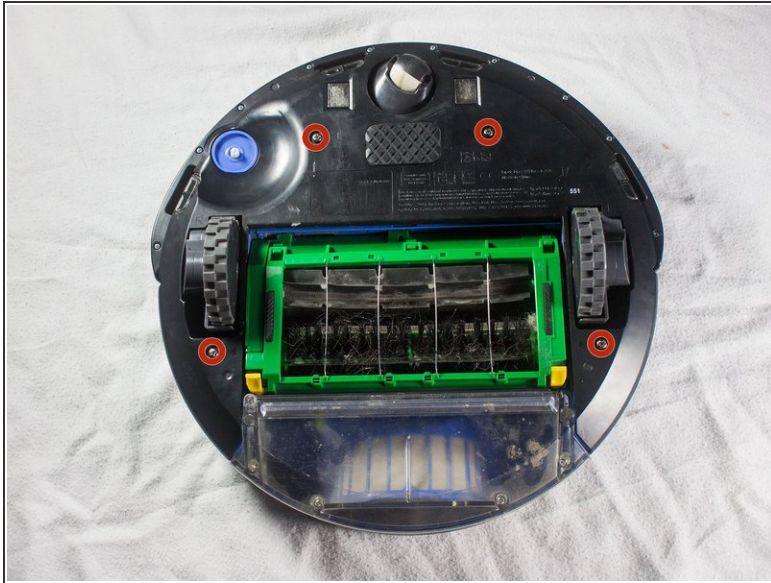
- Gently pull upwards on the brush to remove it.

### Step 4 — Bottom Plate



- Rotate the Roomba upside-down so the bottom is facing towards you.

## Step 5



- Using a Phillips #2 screwdriver, remove the captive screws that hold the bottom plate in place.

## Step 6



- Carefully lift the bottom plate.

⚠ The battery is only secured in place by the bottom plate, and may fall out once the bottom plate is removed.

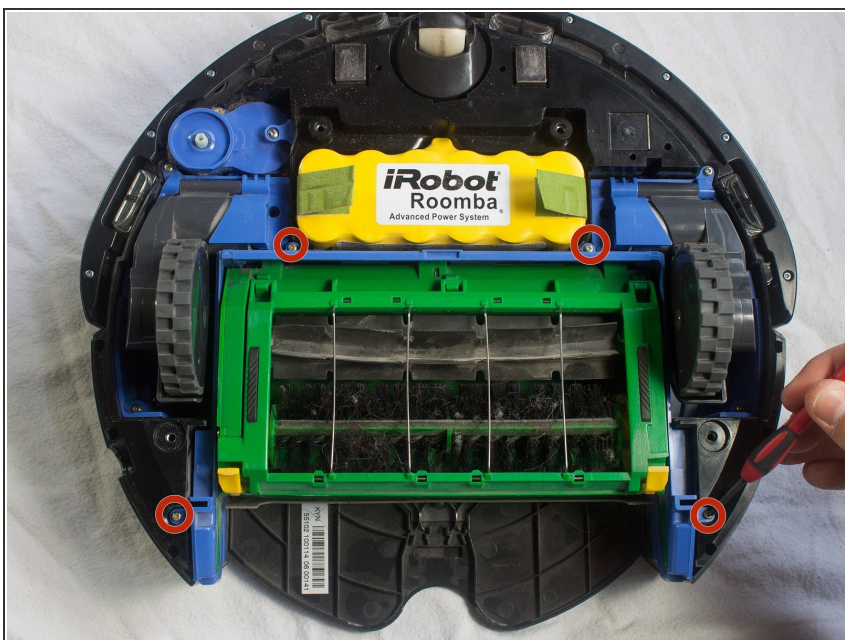


## Step 7 — iRobot Roomba 551 Dirt Bin Replacement



- Push on the dirt bin release button, and pull gently.

## Step 8 — Brush Case



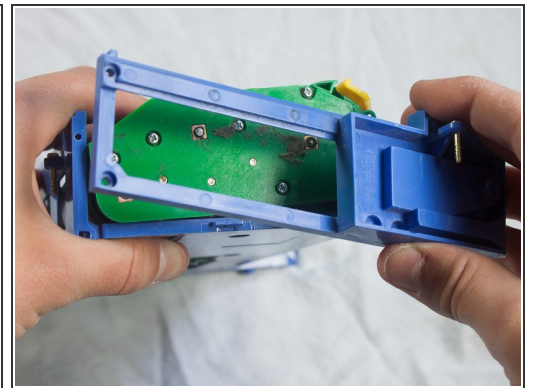
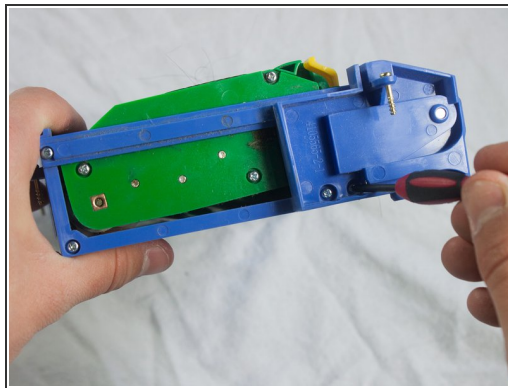
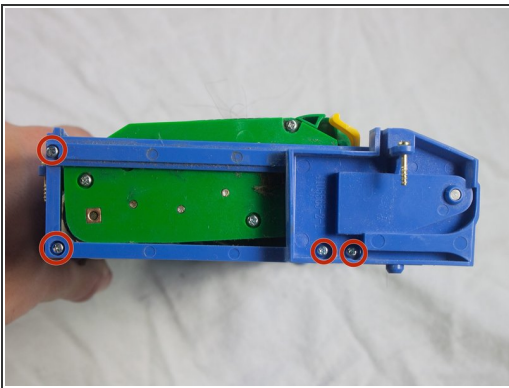
- Use a Phillips #1 screwdriver to loosen the 4 captive screws around the case .

## Step 9



- Grab the brush case and pull upwards to remove.

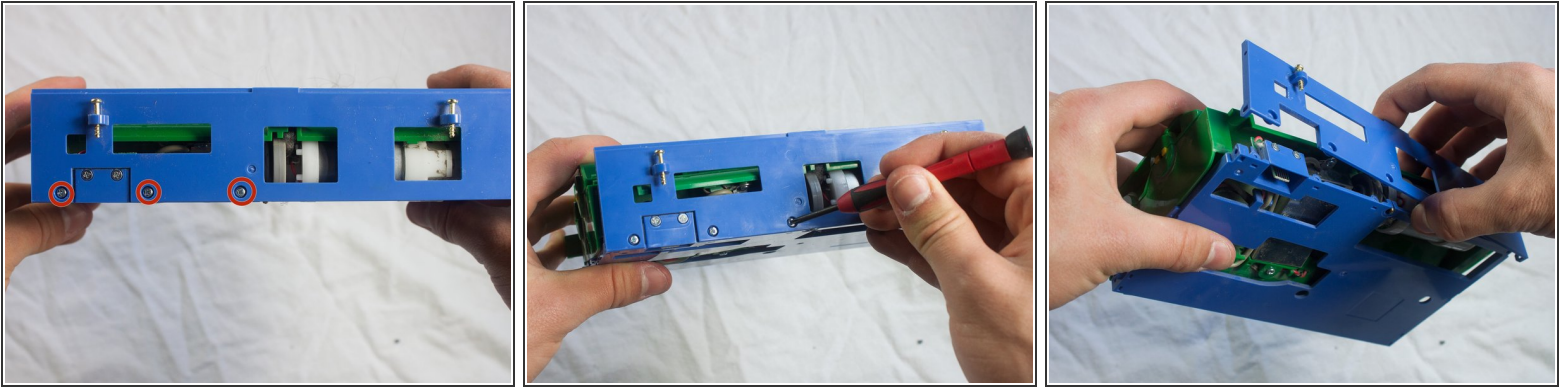
## Step 10 — Main Brush Motor



- Use a Phillips #1 screwdriver to remove the 9.5mm screws from the side of the brush case, and pull to detach.
- Repeat for the opposite side of the brush case.

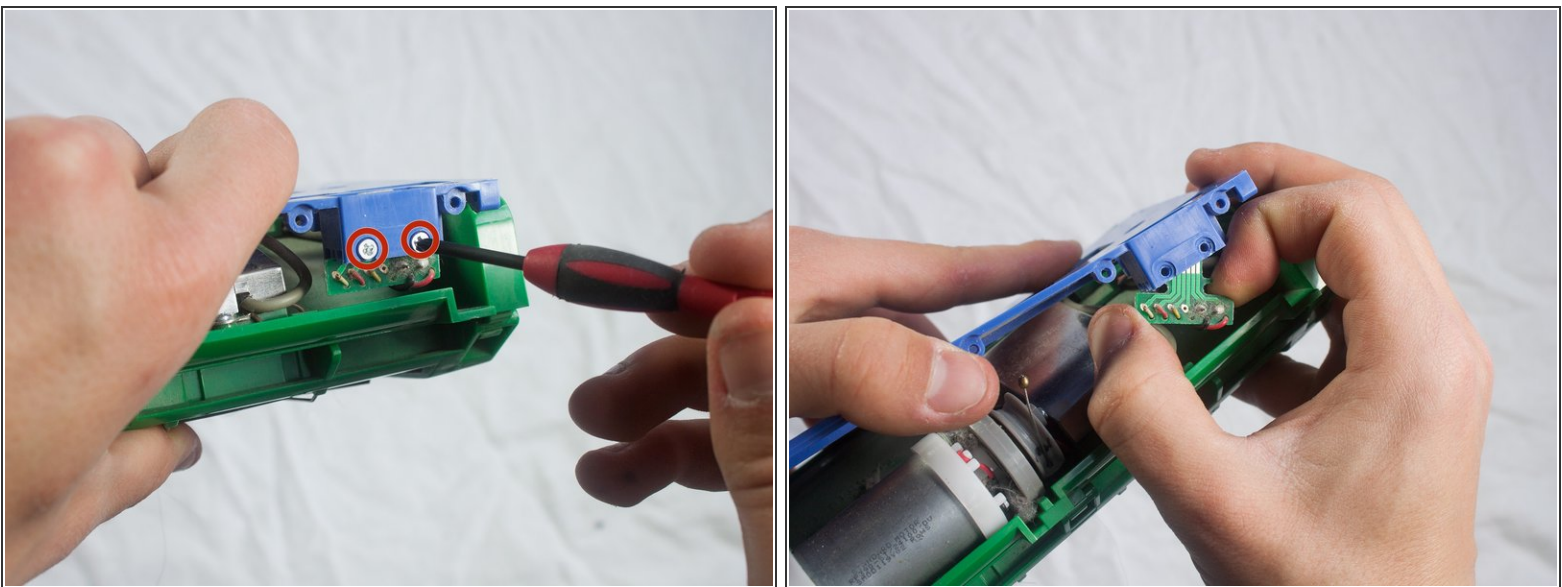


## Step 11



- Use a Phillips #1 screwdriver to remove the three 5.0mm screws from the back of the brush case.
- Pull off the back of the brush case.

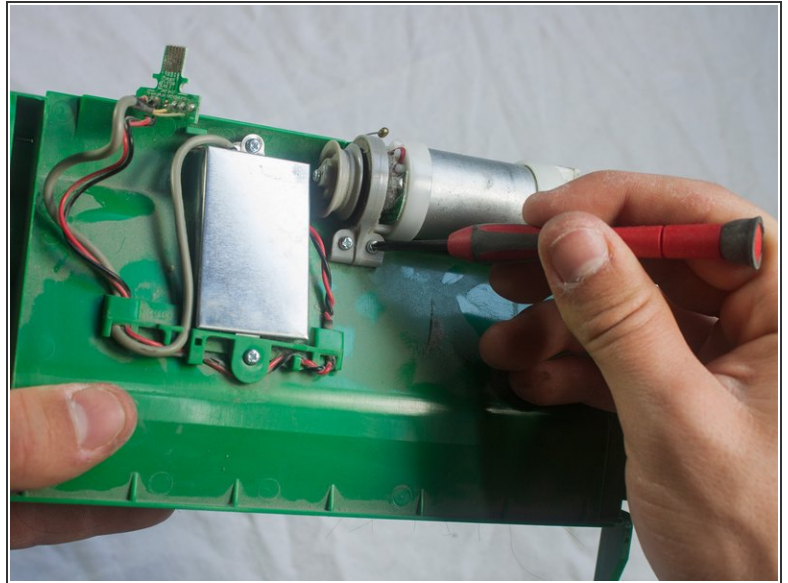
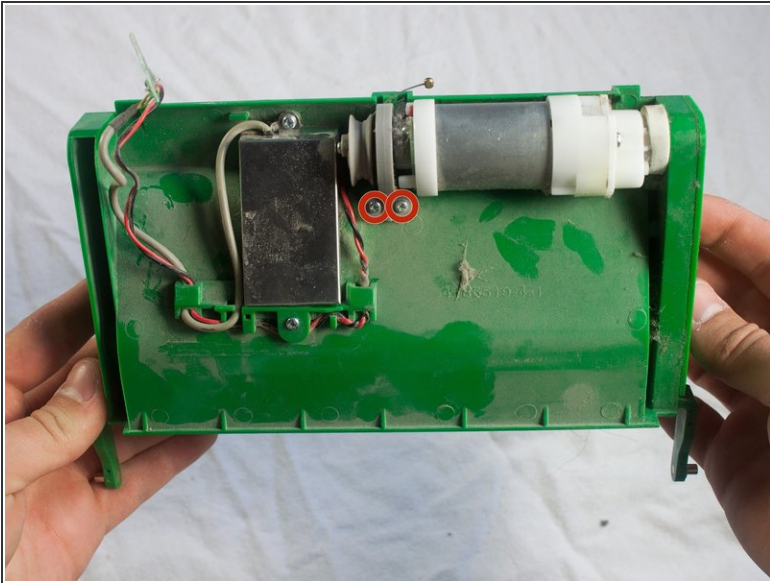
## Step 12



- Use a Phillips #1 screwdriver to remove the two 1.5mm screws securing the chip in place.
- Remove the chip from its housing in the blue brush case.

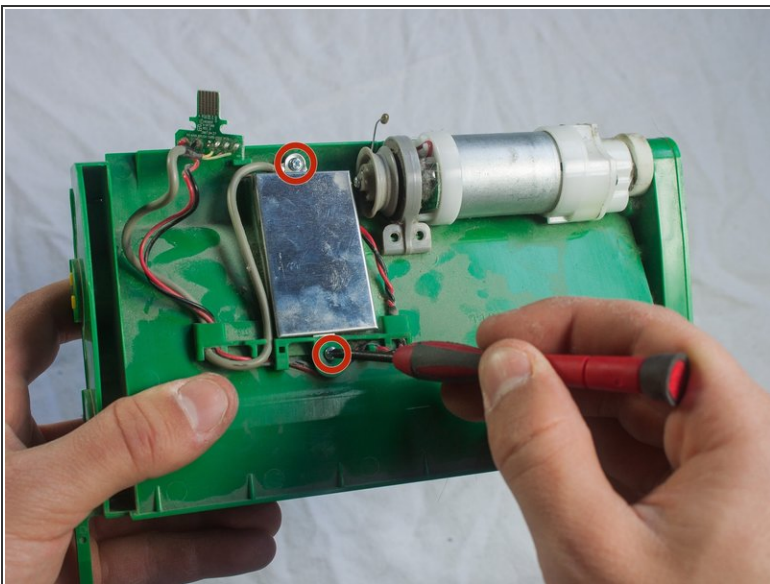


## Step 13



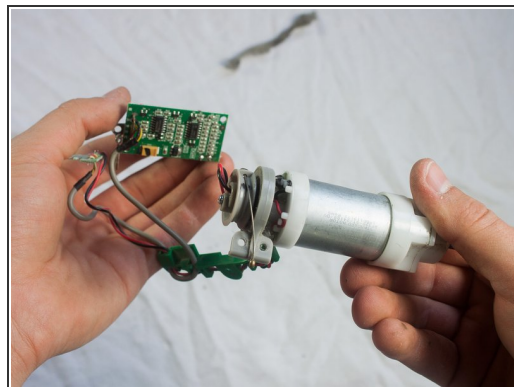
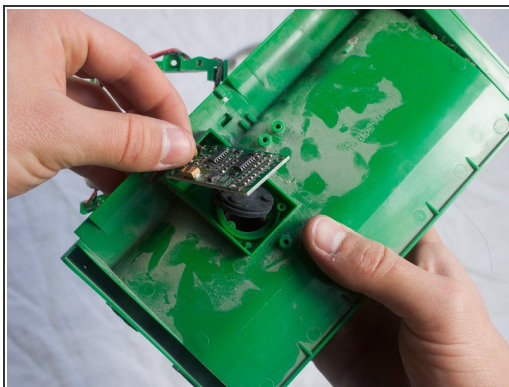
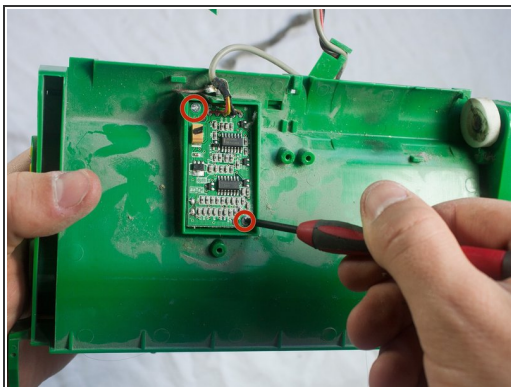
- Use a Phillips #1 screwdriver to remove the two 5.5mm screws securing the motor in place.

## Step 14



- Use a Phillips #1 screwdriver to remove the two 4.5mm screws on the top and bottom of the metal plate.
- Pull out the motor and metal covering.

## Step 15



- Use a Phillips #1 screwdriver to remove the two 3.5mm screws on the corners of the circuit board.
- Gently pull out the circuit board.

To reassemble your device, follow these instructions in reverse order.