



# HP rp5700 Extra Internal Cards Replacement

Follow these steps to replace any extra internal cards from the desktop.

Written By: Alyssa Briones



## INTRODUCTION

The extra internal cards included in this desktop are a COMs port card and a phone line card. These cards can vary in different computers. The extra internal cards are an addition to provide ports on for the computer that are not available on the motherboard.

## Step 1 — Cover Removal



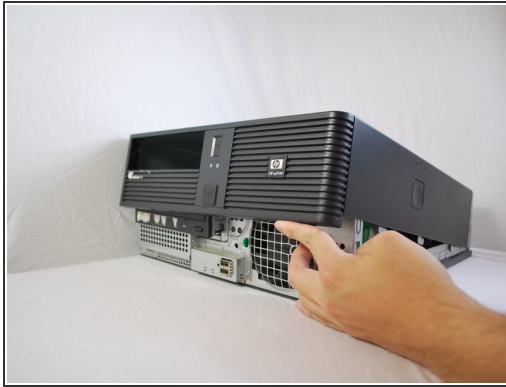
- Make sure the computer is unplugged.
- ⚠ Be sure to touch any metal surface with your hand to discharge any static electricity that might have built up.
- Make sure all auxiliary cords are disconnected from the desktop. If not, remove them using your hands.
- Set the desktop down horizontally with the front side facing you.

## Step 2



- Hold the desktop with two hands by grasping both sides of the desktop.
- Press the buttons on both sides using your index fingers.

### Step 3



- Slide the top cover about an inch forward using your thumb to push it towards you.
- Make sure that the bottom is still secured by both hands.
- Lay the desktop back on the table and pull the case forward as far as it can go.
- Lift the cover up and off.

### Step 4 — Optical Disk Drive (CD Drive)



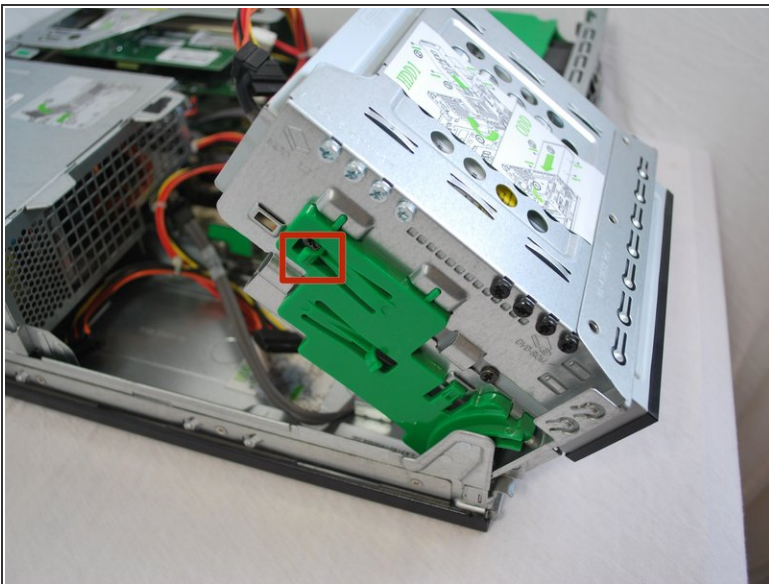
- Using your hand, grip the Optical Drive and lift it up into a 45 degree angle.

## Step 5



- Disconnect the power supply cord and the SATA cord using your hands to pull them out.

## Step 6



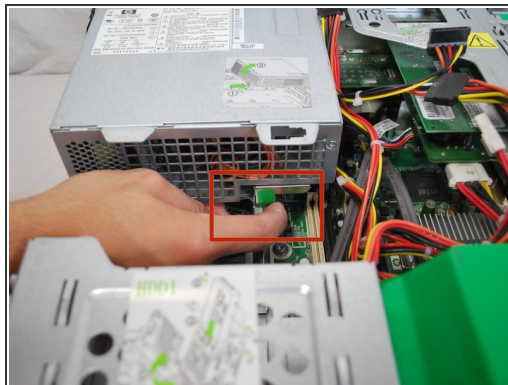
- Using your left index finger, lift the upper green tab found on the left side of the green piece.
- Using your opposite hand, use your fingers to push the back of the drive forward and slide it out away from the desktop.

## Step 7



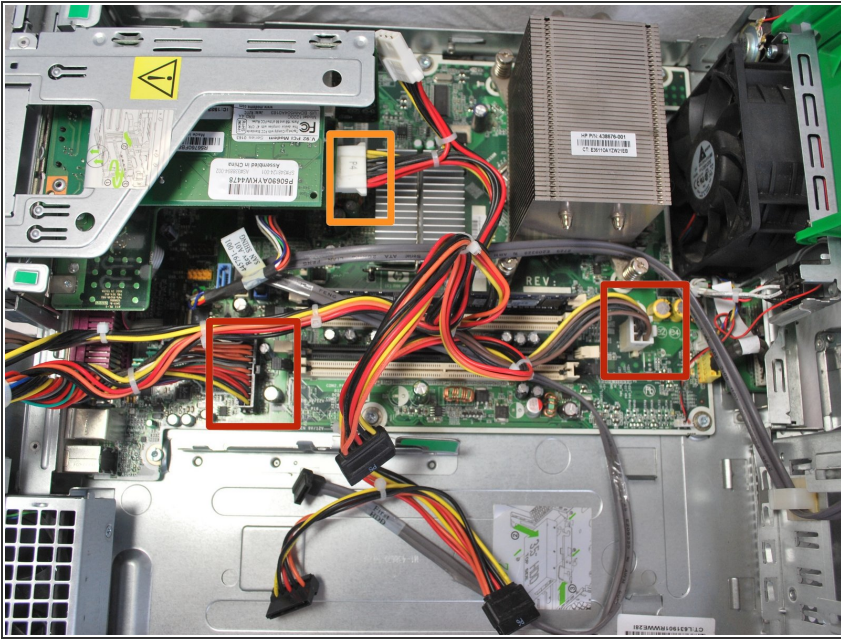
- Grasp the optical drive with your right or left hand and pull the drive out towards you.
  - ❗ It will help if you lay the device flat in order to remove the drive.

## Step 8 — Power Supply



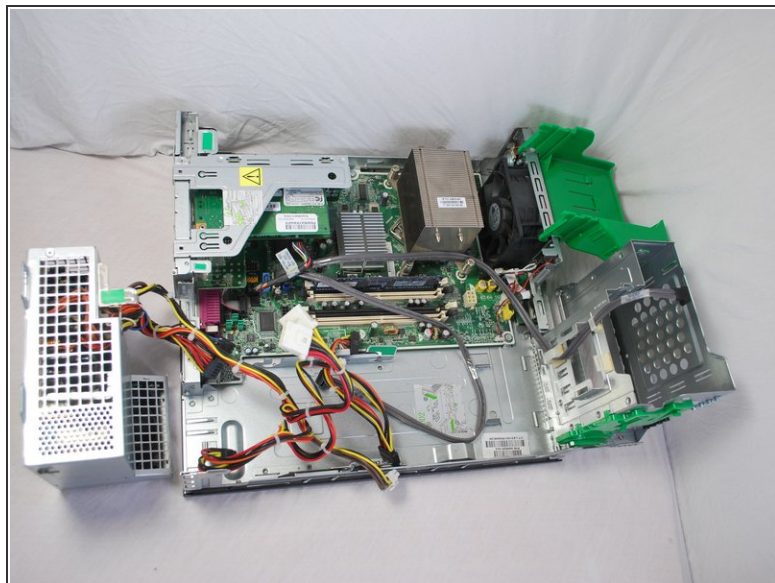
- Using your right index finger, press the tab with the green sticker located underneath the power supply.
- While pressing the tab, lift up the power supply the same way you lifted up the optical drive.
  - ☑ You lifted the optical drive by grasping it with the opposite hand while pressing the tab and pulling it outward way from the center of the device.

## Step 9



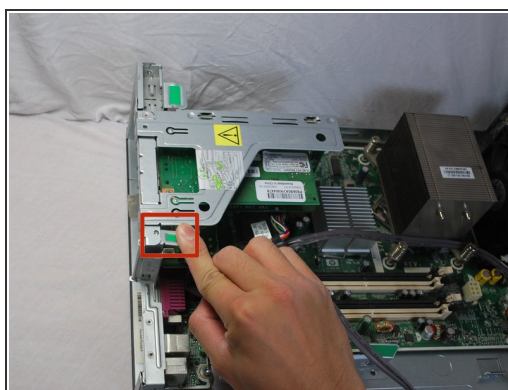
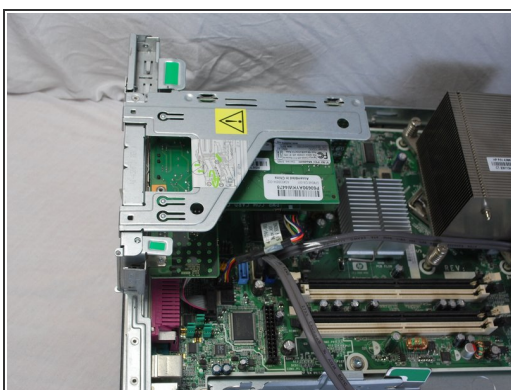
- Remove the two cables on the motherboard by grasping the cables with your hand and pulling the cables up and out.
- Repeat the same process to remove the internal card power cable.
  - This is the same process as preformed when you previously removed the power cables from the optical drive and the hard drive.
  - Some cables may have small clips securing them in place. If so, be sure to press these clips inward using your fingers before pulling them out.

## Step 10



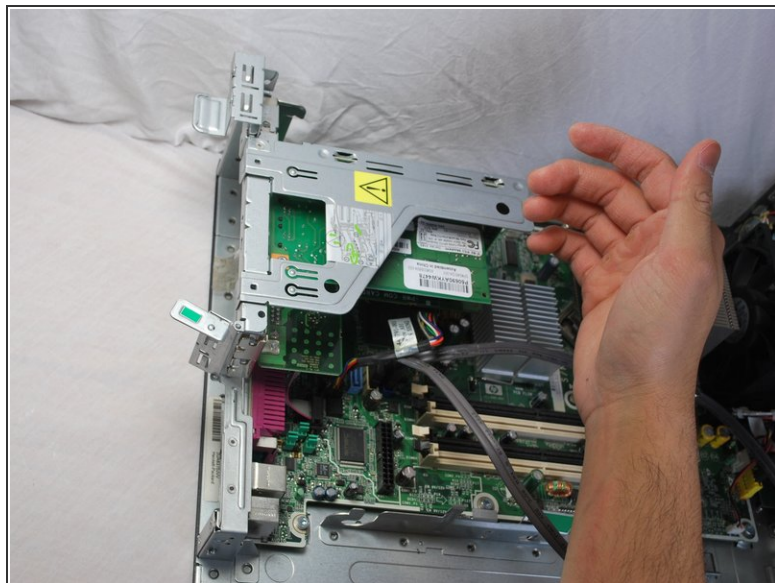
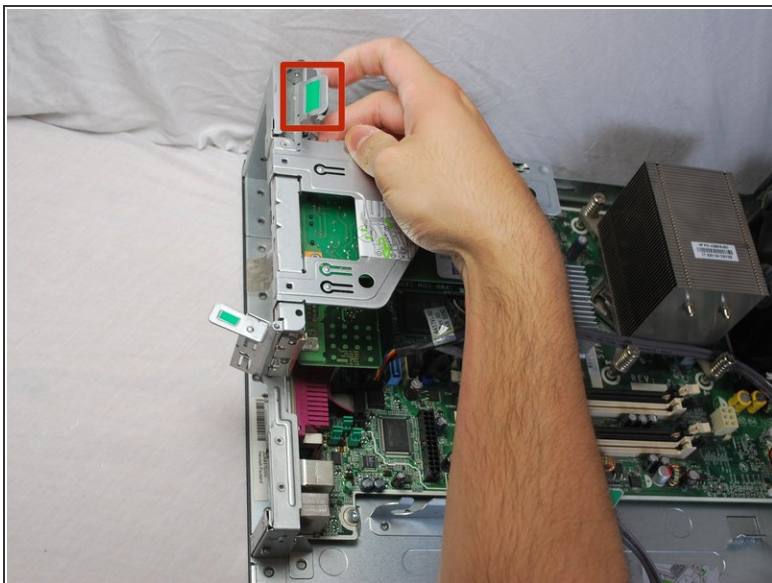
- Continue to rotate the power supply to a 90 degree angle pointing upward.
- Gripping the power supply with your hand, lift the power supply up to remove from the desktop.

## Step 11 — Extra Internal Cards



- Pull out the tab with the green sticker using your index finger.

## Step 12



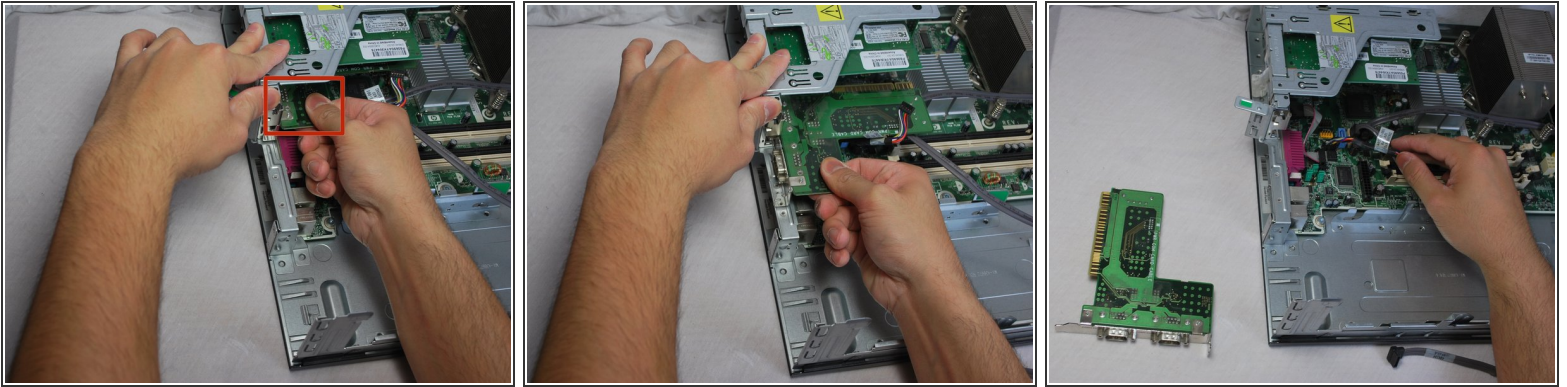
- Using your index finger, pull up the green tab on the left side of the cards.

## Step 13



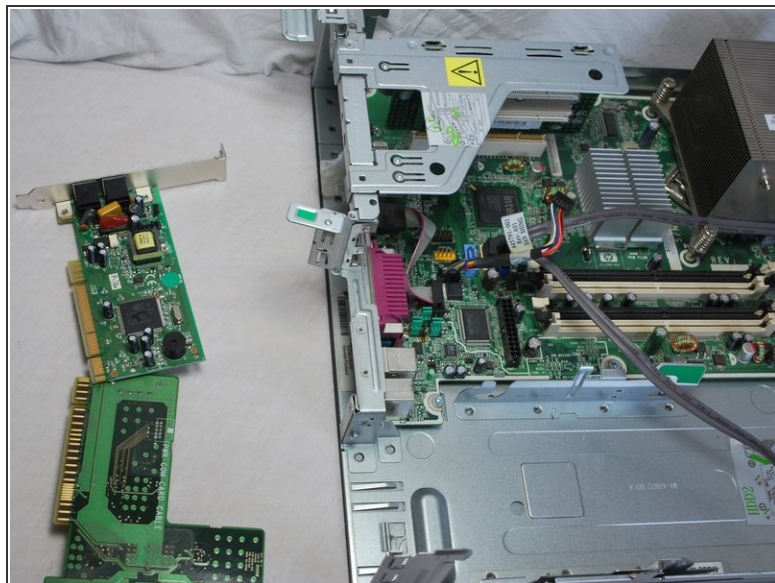
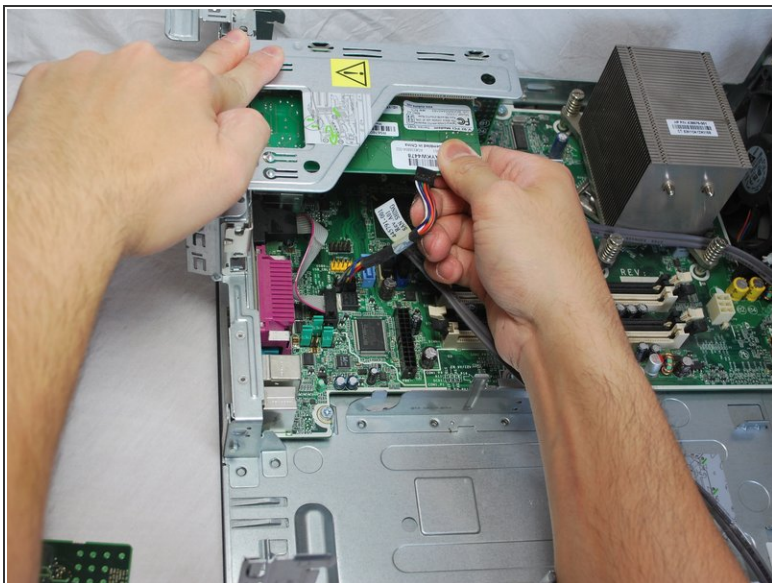
- Use your right hand to remove the cable that is attached to the COMS card by grasping the cables and pulling it out.

## Step 14



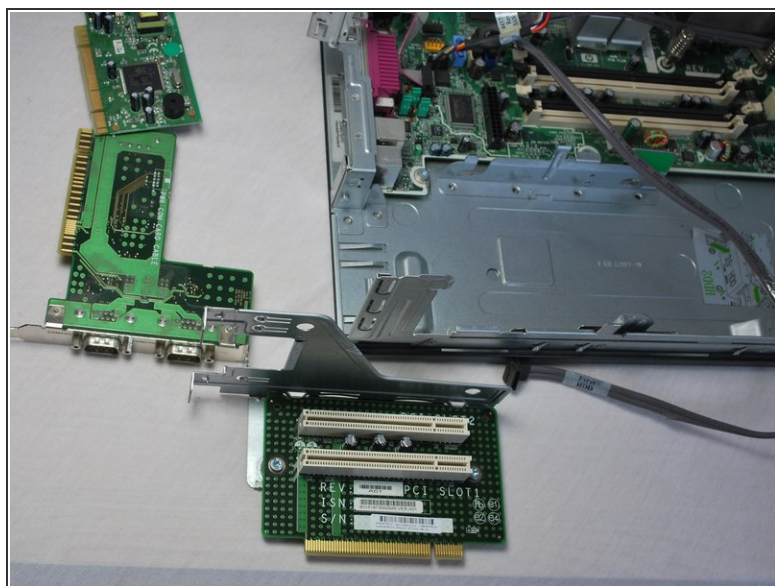
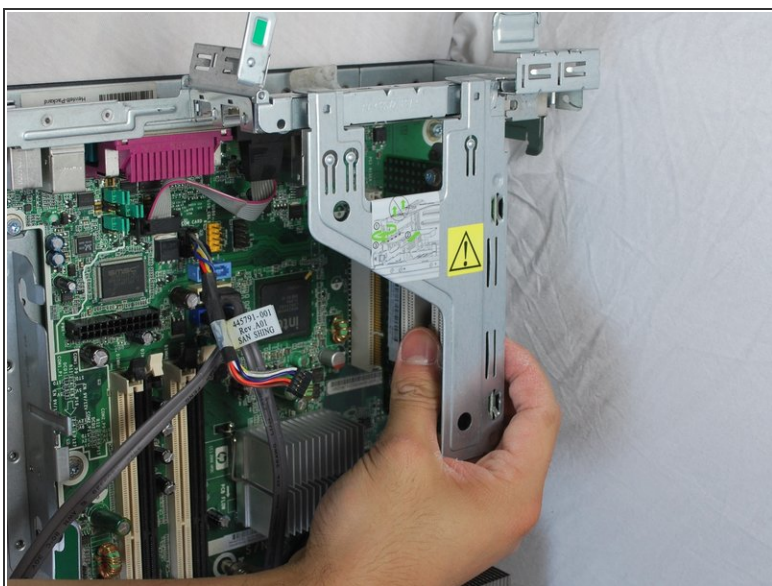
- Hold the back frame of the case with your left hand, and grab the larger section of the COMs card, or the bottom card, with your right hand.
- Wiggle the card a little and pull the COMs card straight out towards you.
- ⓘ "Wiggling" the card first will make it easier for you to take the card out instead of just forcing it out.

## Step 15



- Grab the larger section of the phone line connection card, or the bottom card, with your right hand while your left hand holds the back frame of the case.
- ⓘ This is the same process as you previously preformed to remove the COMs card.
- Wiggle the card a little and pull the phone line connection card straight out.

## Step 16



- Using your hand, firmly grab the base card by the main green section while holding down the case with your opposite hand.
- While holding the base card, wiggle it until it is released from the motherboard and pull straight out and set it aside.

To reassemble your device, follow these instructions in reverse order.