



Fluke 77 Series III Fuse Replacements

Replace either or both of the fuses on the Fluke 77 Series III Multimeter.

Written By: Jessica Bombardier Shaw



INTRODUCTION

This guide will explain how to replace the .440 and 11 Amp fuses. Both fuses can be removed and replaced the same way, so either one can be replaced using this guide. Remember to put the each fuse in its correct socket based on its current rating. To make sure that your replacement fuses are compatible with the Fluke 77 Series III Multimeter, refer to the back panel fuse rating label or the [Service Manual](#).



TOOLS:

- [Phillips #2 Screwdriver](#) (1)
 - [iFixit Opening Tool](#) (1)
-

Step 1 — Front Panel



- ⚠ Be sure any test leads are out and the multimeter is off before opening the device.
- Turn the multimeter so it is display side down.
- Lift up the back stand of the device by putting your thumb in the curved well at the bottom of the device, so you have access to the two covered screws below.

Step 2



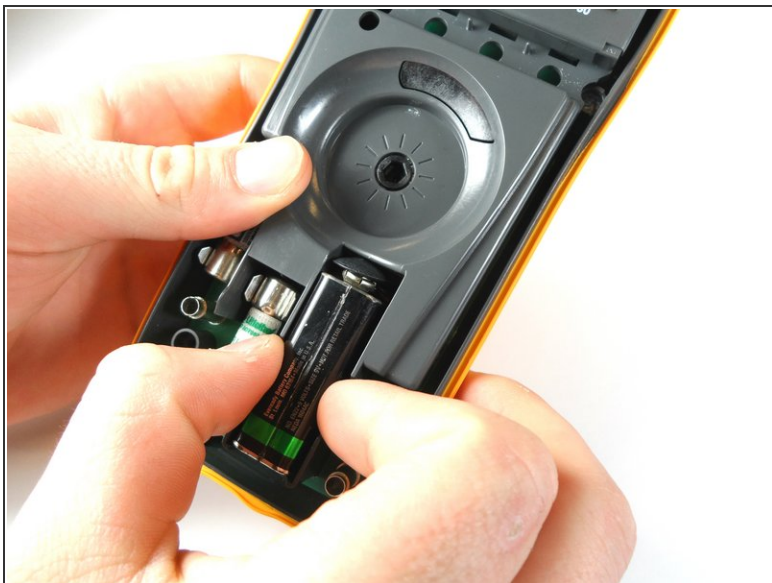
- Use your Phillips #2 Screwdriver to remove the four black 21 mm Phillips #2 screws.

Step 3



- Turn the Fluke 77 Series III Multimeter back over so that it is display side up.
- Pry the front panel from the back panel at the seam.
- If the front panel does not come off easily, move a plastic opening tool along the seam until the panels separate completely.

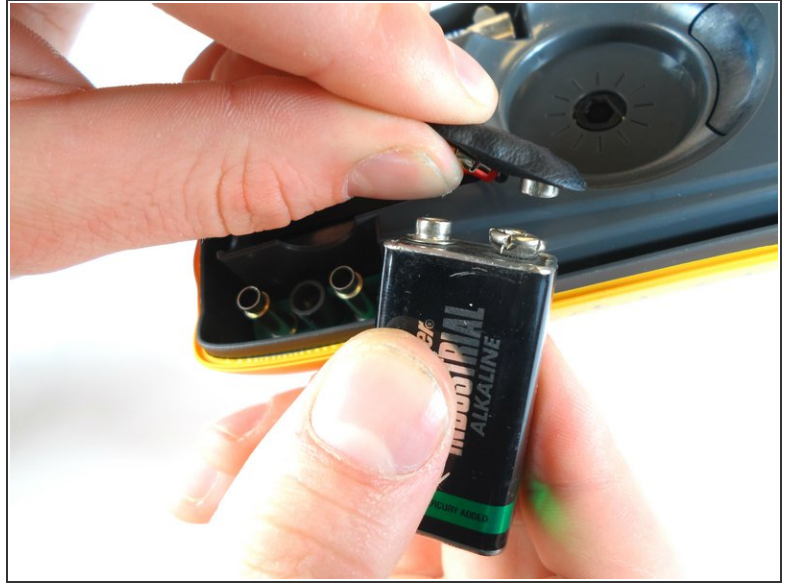
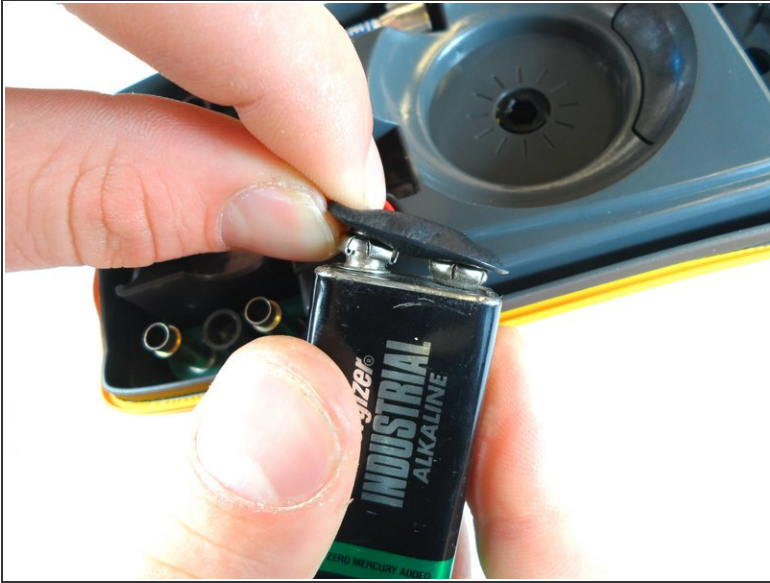
Step 4 — Battery



⚠ When doing this next step, make sure to remove the battery slowly, so you don't damage the wires connecting the battery to the device.

- Locate the 9V battery in the lower right corner of the device.
- Pull the battery out of its terminal.

Step 5



⚠ Only pull on the metal snaps and battery. Pulling the cords may damage them.

- Detach the two metal snaps from the battery.

Step 6 — Fuse



⚠ Replace a fuse only with a fuse identical in type, voltage rating, and current rating as specified by the back panel fuse rating label or the [Fluke 77 Series III Service Manual](#). Inserting the wrong replacement fuse could create a fire hazard.

- Locate the fuses near the bottom left corner inside the device.
- ☑ Take note of which fuses belong in which location before removal. They are **NOT** interchangeable.
 - The .440 Amp fuse is located in the upper left hand fuse holder.
 - The 11 Amp fuse is located in the lower right hand fuse holder.
- Lift the rounded edge of the fuse with one finger until that side is completely out of its holder.

Step 7



- Grab the lifted edge of the fuse between your thumb and forefinger and pull it the rest of the way out of the device.
- ⓘ The fuse in the upper left corner can be tricky to remove. Use a plastic opening tool if needed.
- Repeat steps 4 and 5 to remove the other fuse if you are replacing both fuses or if you are replacing a different part further on.

To reassemble your device, follow these instructions in reverse order.