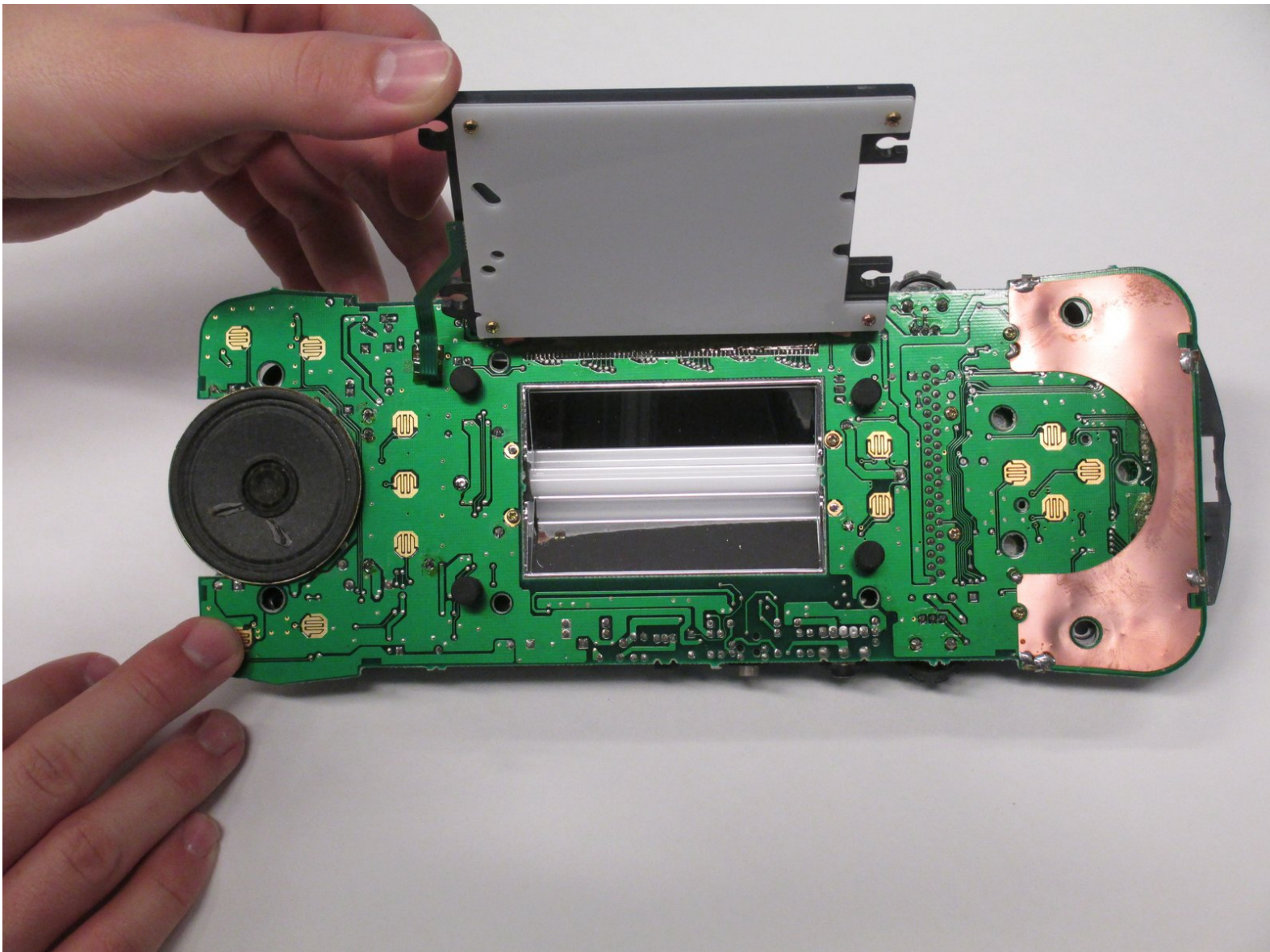




Atari Lynx Backlight Replacement

This guide will show how to replace a broken backlight.

Written By: John Lopez



INTRODUCTION

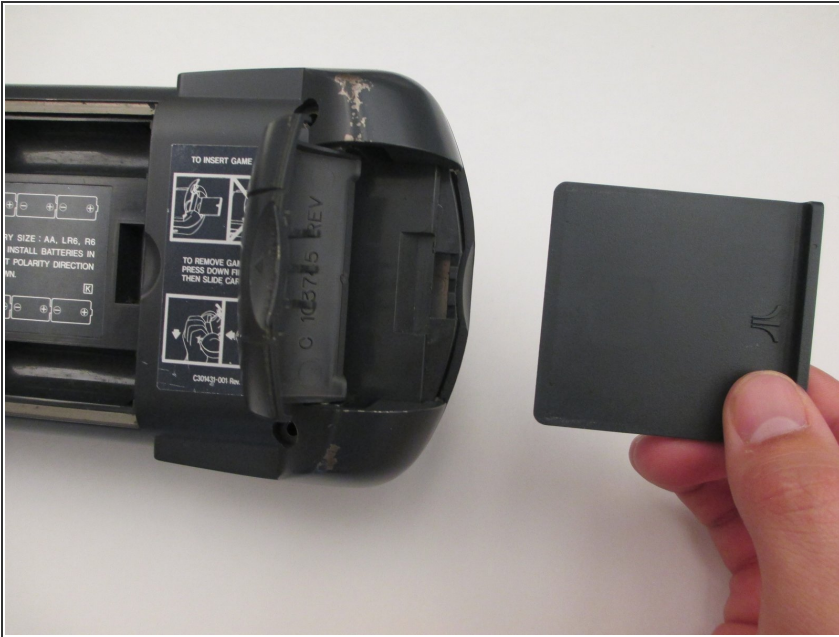
Before starting this guide you may need some experience with soldering/ desoldering. If you do not know how, you can learn by clicking the link we put on step 8 (when you have to desolder the backlight).



TOOLS:

- [Phillips #1 Screwdriver](#) (1)
 - [Phillips #0 Screwdriver](#) (1)
 - [Soldering Iron](#) (1)
 - [Solder](#) (1)
-

Step 1 — Atari Lynx



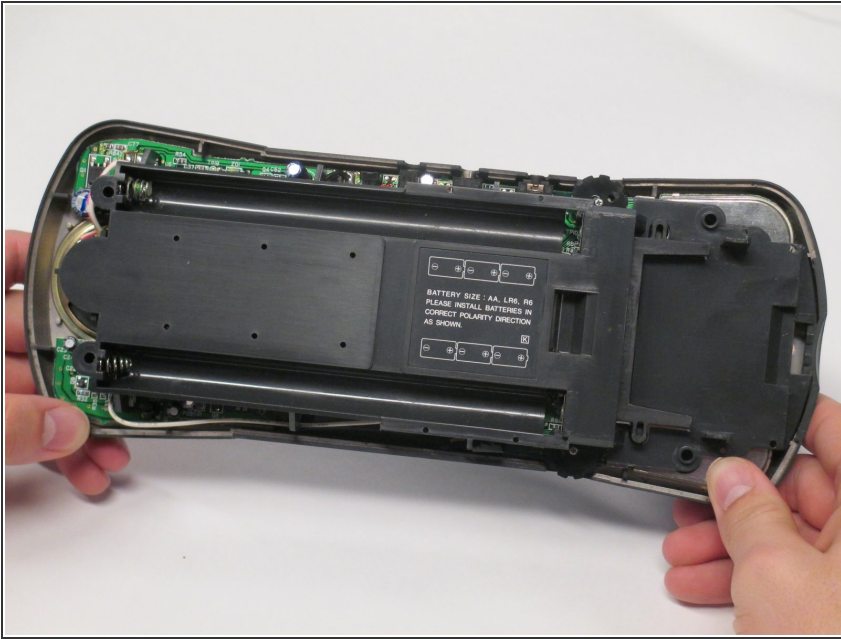
- Before disassembling your Atari Lynx, be sure the device is powered off.
- Remove any game in the console by opening the right latch and sliding the game to the right.

Step 2



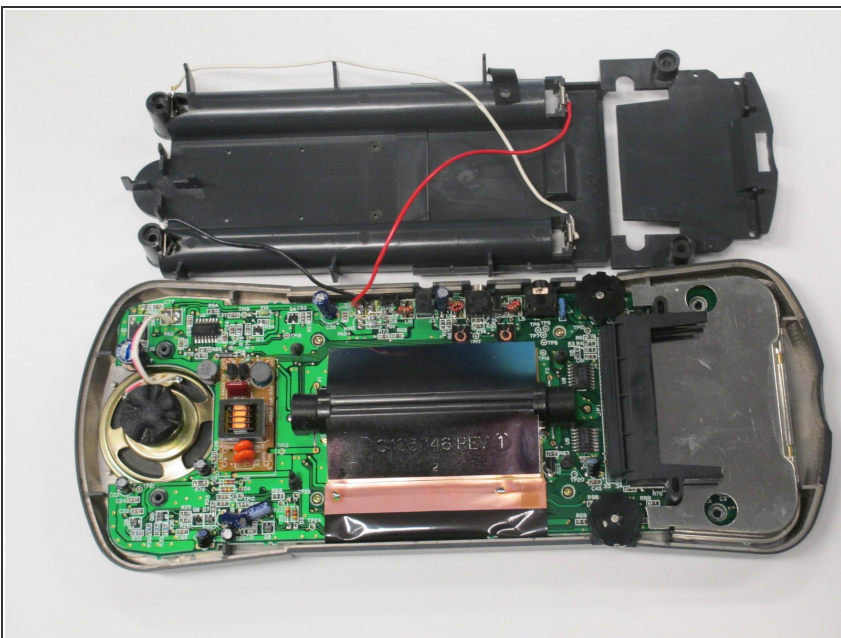
- Remove the four 35 mm Phillips #1 screws at each corner of the backside on the Atari Lynx.
- Pinch the rear panel with your fingers and lift away from the Atari.

Step 3



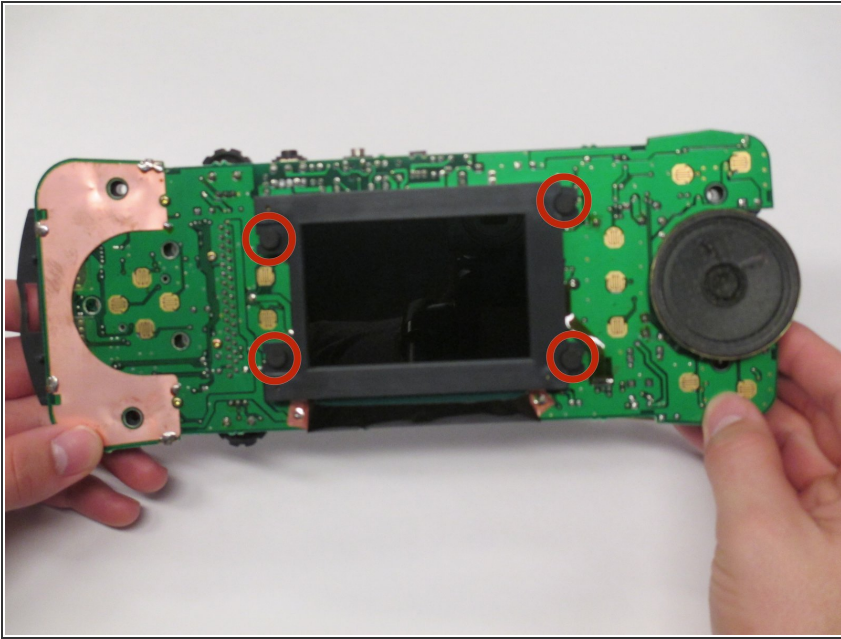
- Remove the battery panel by pinching the sides with your fingers and lifting it away from the Atari.
- ⚠ Be sure not to tear any wires attached to battery panel.

Step 4



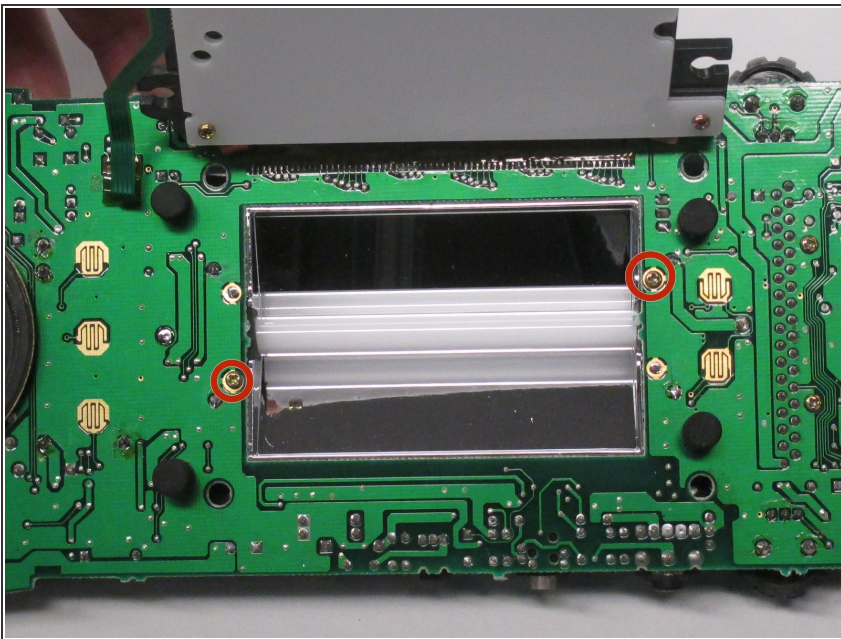
- Remove the control panel by pinching the sides with your fingers and lifting it away from the Atari.
- ⚠ Be sure not to tear the speaker wire while removing the control panel.

Step 5 — Backlight



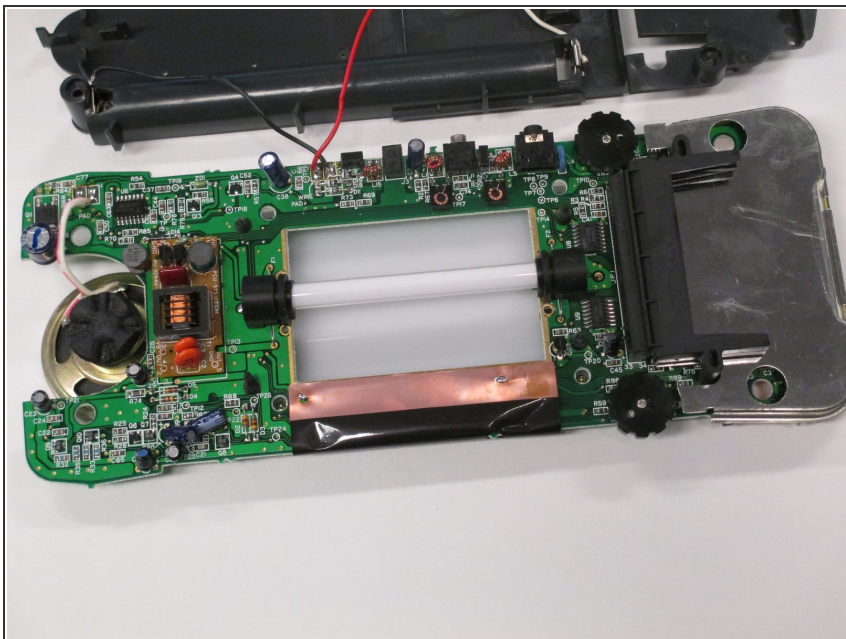
- Pull out the logic-board.
- Pull to the sides the four rubber tabs holding in the screen

Step 6



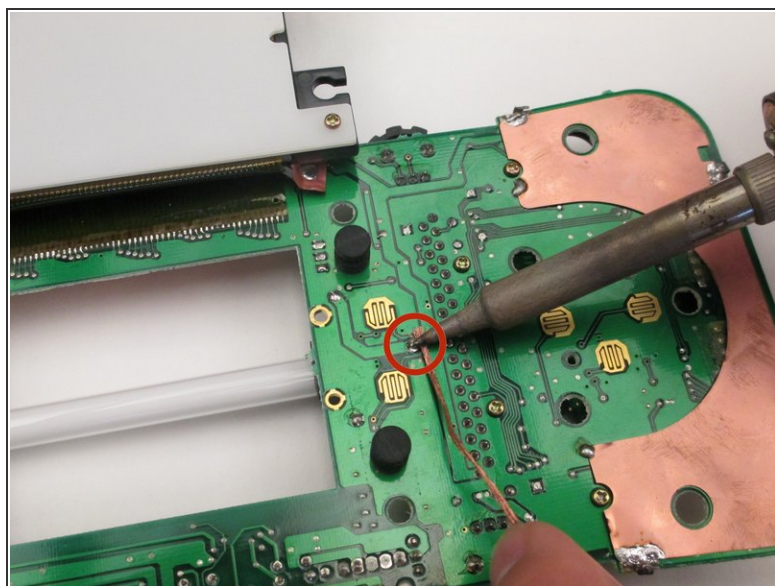
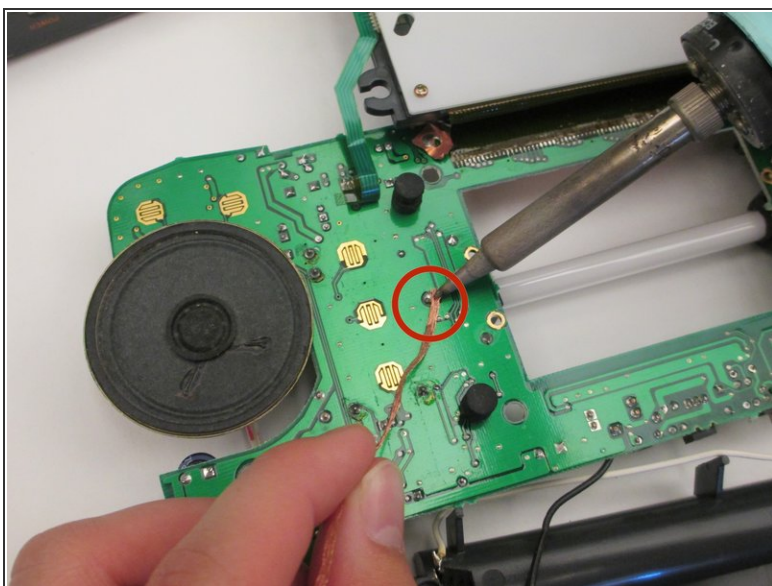
- Unscrew the two 10 mm screws as shown with a Phillips #0 screwdriver in order to remove the shield behind the backlight.

Step 7



- Flip over the motherboard and remove the shield behind the backlight.

Step 8



- Flip the motherboard back over and desolder the two components that are holding the backlight in place.
- If you need help with basic desoldering, click [here](#).

To reassemble your device, follow these instructions in reverse order.