



Brother PT-D200 LCD Screen Replacement

If screen is cracked or not working, this guide can be used to provide thorough step-by-step instructions for the replacement of the LCD screen in the Brother PT-D200.

Written By: Jeston Mitchell



INTRODUCTION

This guide will walk you through the process of replacing a dead or broken LCD screen on a Brother PT-D200.



TOOLS:

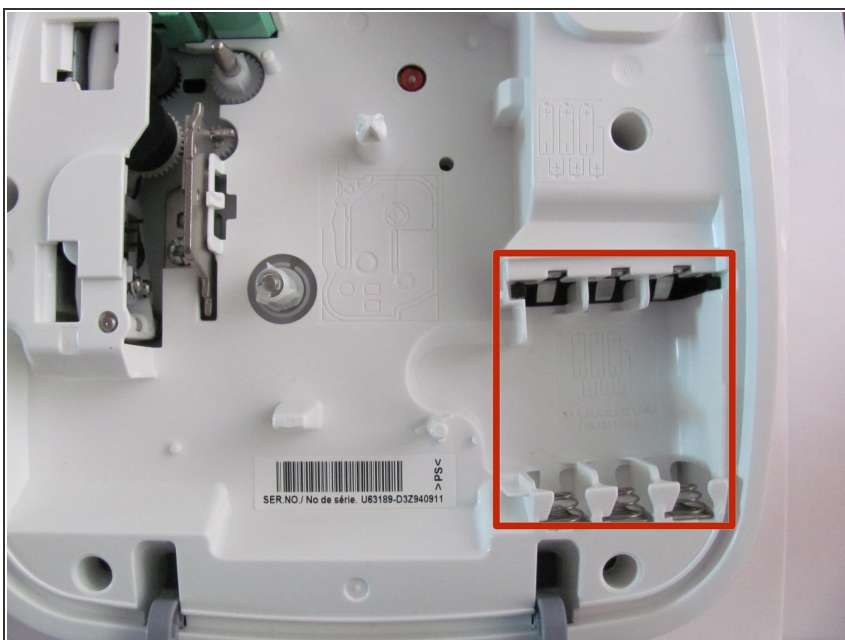
- [Phillips #2 Screwdriver](#) (1)
-

Step 1 — Battery



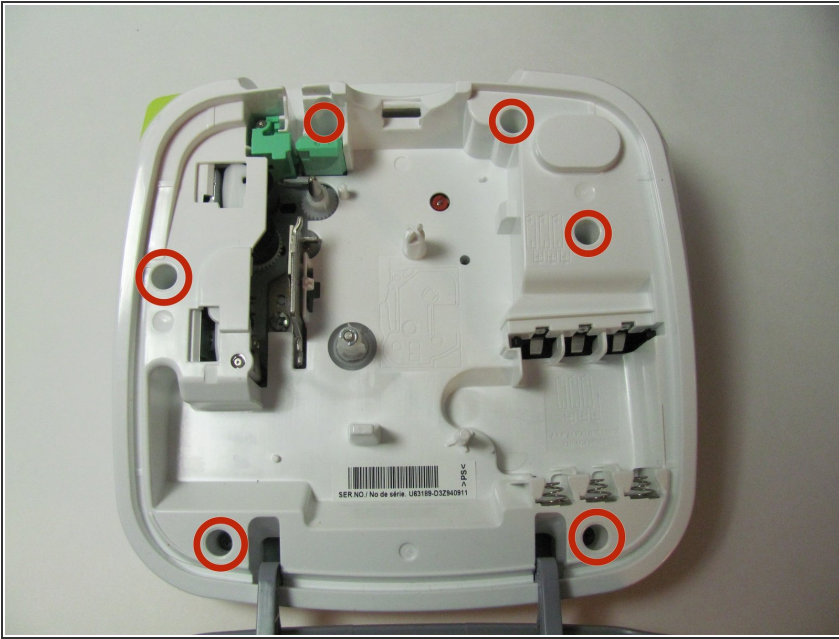
- Flip the device over and press down on the indication arrows located at the top center of the back cover and pull it open.

Step 2



- Remove the six AAA batteries.

Step 3 — Back of Device



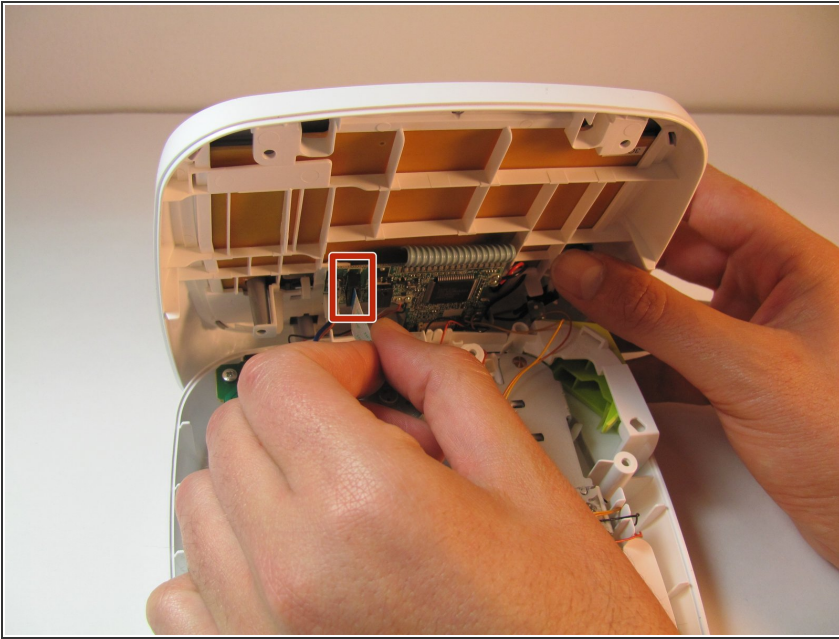
- Use the Helping Hand 1/4" screwdriver to unscrew the six 3/16" corner screws.

Step 4



- Close the back cover and then flip the device over and separate the top half from the bottom half as shown.
- ⚠ Be gentle when lifting the top of the device, there is a ribbon cable attaching the two halves together.

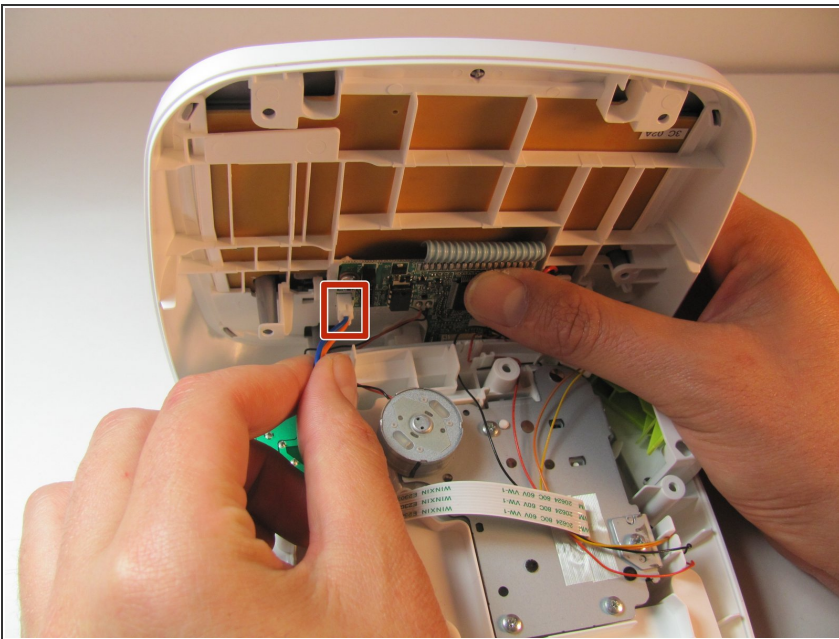
Step 5 — Circuit Board Cables



- Gently pull out the ribbon cable from the circuit board.

⚠ The ribbon cable is very fragile.

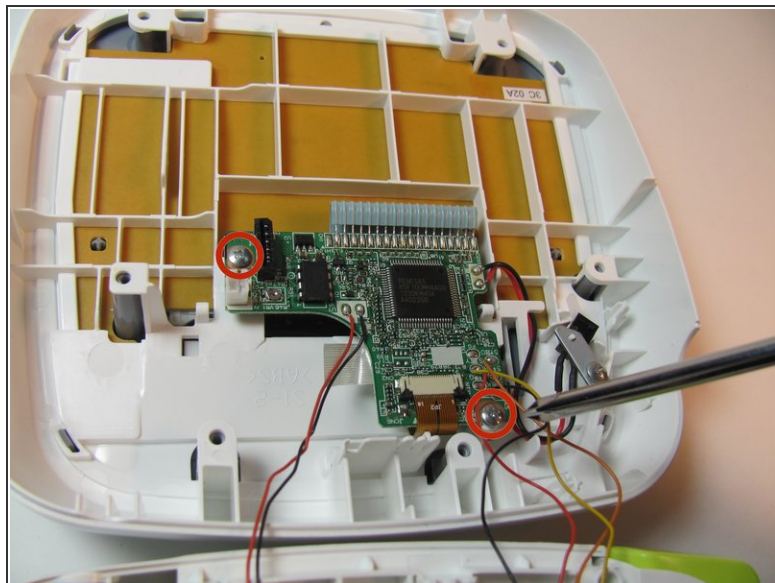
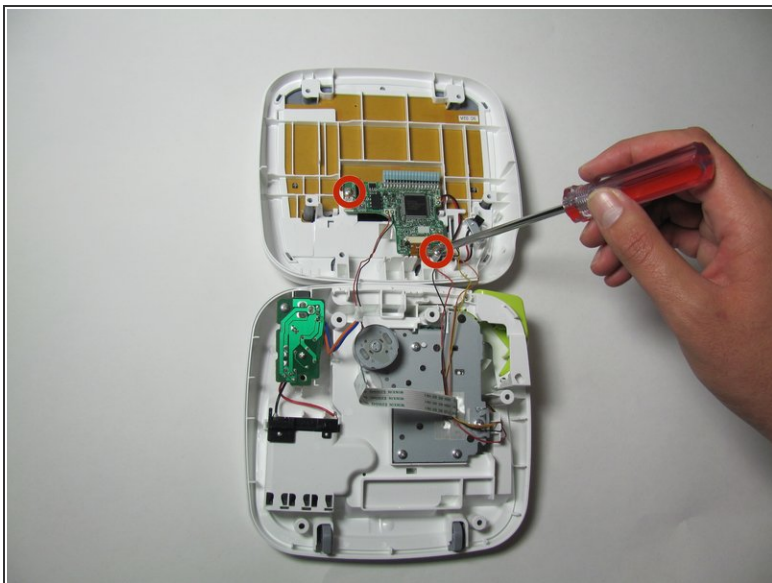
Step 6



- Remove two-pin plastic connector from the circuit board.

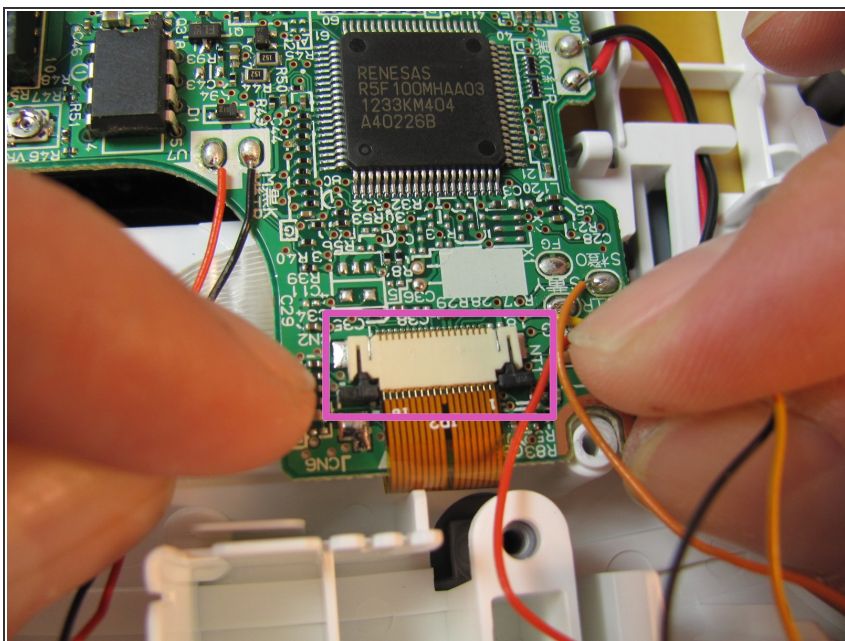
⚠ Gently pull the two-pin connector from the circuit board to avoid damaging the board.

Step 7 — Circuit Board



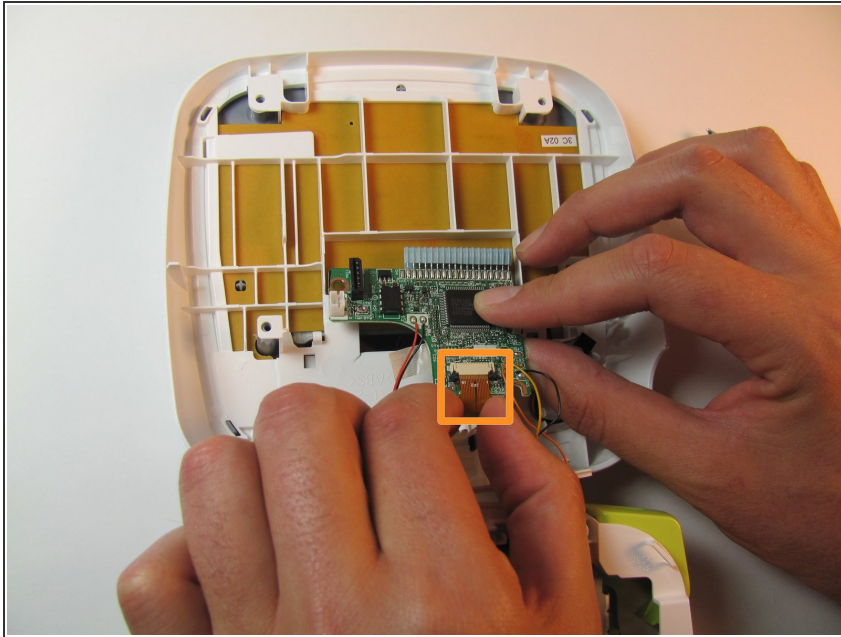
- Remove the two 3/16" screws from the circuit board using the Helping Hand 1/4" screwdriver.

Step 8



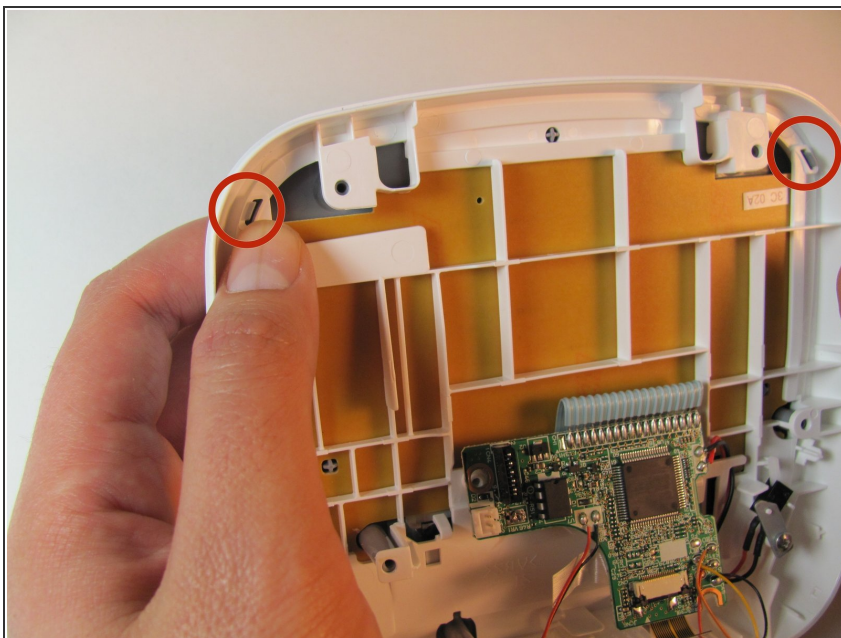
- Release the two black clips that hold the LCD cable ribbon in place. To release, pull the clips towards the ribbon.

Step 9



- Disconnect the LCD ribbon cable from the circuit board.

Step 10 — Face Plate



- On the top portion of the device there are four grey clips locking the faceplate in place. The two top clips

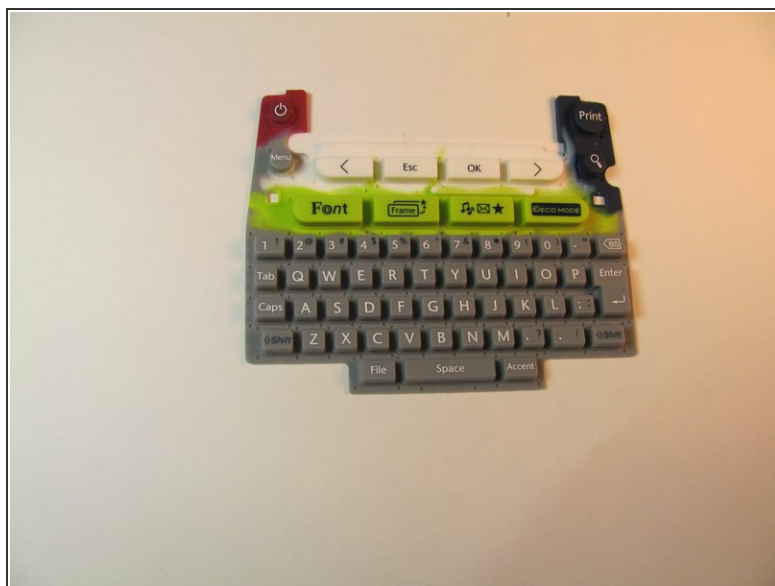
are circled in the image. The two others are located in the other corners of the device.

Step 11



- Pull the clips inward two at a time, first the top then the bottom, to snap the face plate off.

Step 12 — Keyboard



- Peel off the rubber keyboard of the device.

Step 13 — LCD Screen



- Lift the LCD screen out of place.

To reassemble your device, follow these instructions in reverse order.