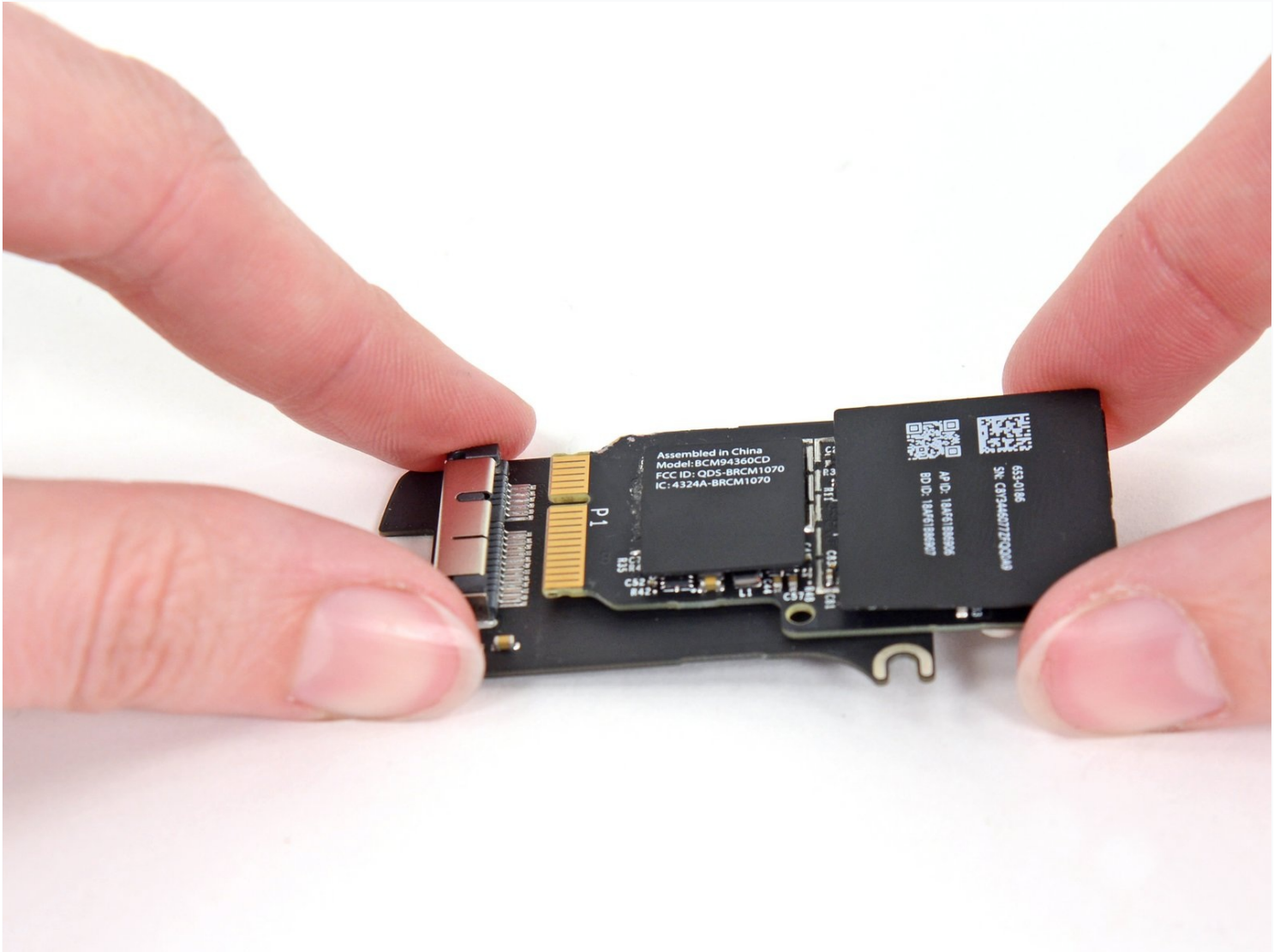




# Mac Pro Late 2013 AirPort Card Replacement

Use this guide to replace the AirPort card in...

Written By: Andrew Optimus Goldheart



# INTRODUCTION

Use this guide to replace the AirPort card in your Mac Pro Late 2013.

---

## TOOLS:

[T4 Torx Screwdriver](#) (1)

[Spudger](#) (1)

[TR10 Torx Security Screwdriver](#) (1)

[TR7 Torx Security Screwdriver](#) (1)

[Tweezers](#) (1)

---

## Step 1 — Outer Case



- Slide the lock switch to the right, to the unlocked position.

## Step 2



- Lift the outer case straight up off the Mac Pro.
- ⓘ It may help to push down on the center of the fan while lifting the case up.

## Step 3 — Fan Assembly



- Remove five 5.1 mm T10 Torx screws from around the outer perimeter of the fan assembly.

## Step 4



ⓘ The fan assembly is attached to the rest of the computer by two cables on the IO board side.

- Tilt the assembly up away from the IO board.

⚠ Do not try to remove the fan assembly yet, as it is still attached by two cables.

## Step 5



- While supporting the fan assembly with one hand, loosen the two T8 captive screws in the fan cable bracket.

⚠ These screws are captive in the Mac Pro. Do not try to remove these screws from your Mac Pro.



## Step 6



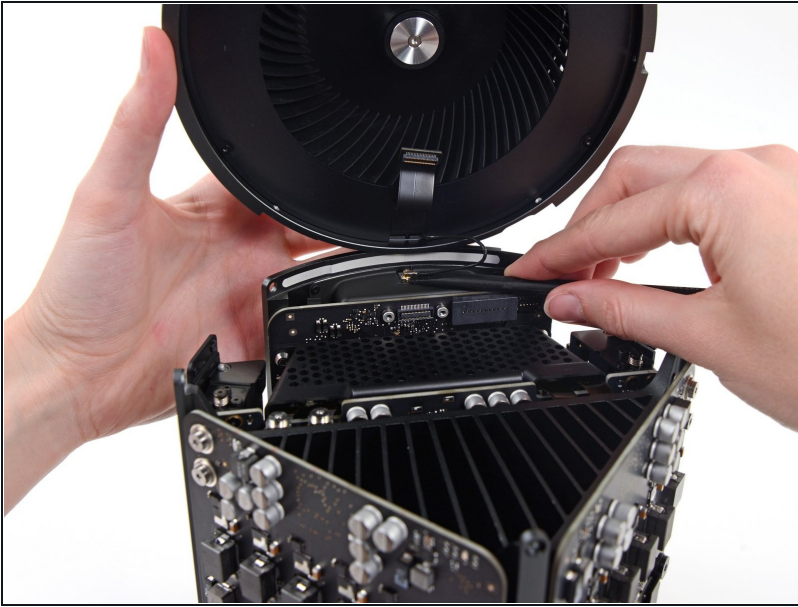
- Use a pair of [tweezers](#) to pull the fan cable bracket away from the fan assembly.

## Step 7



- Use the flat end of a spudger to disconnect the fan assembly ribbon cable from the IO board.

## Step 8



- Disconnect the fan assembly antenna cable from the IO board.
- Remove the fan assembly from the Mac Pro.

## Step 9 — Fan Assembly Lid



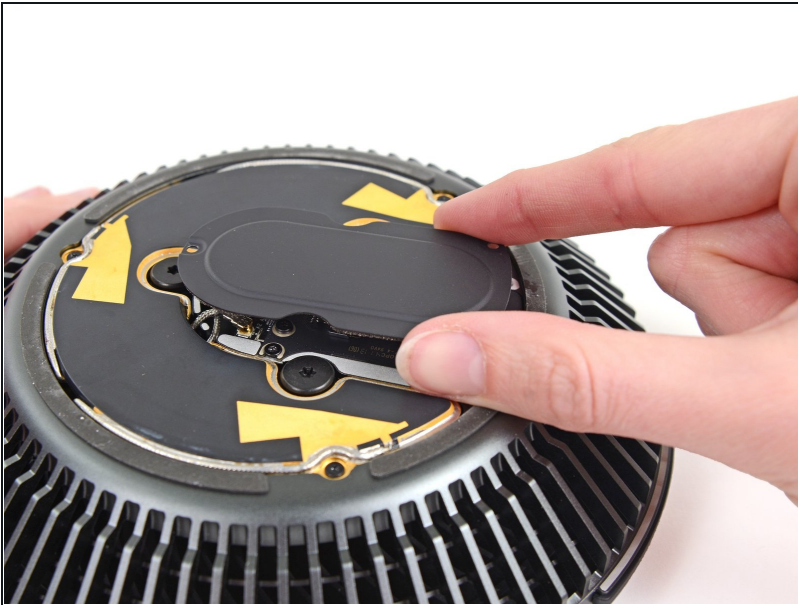
- Use the flat end of a spudger to pry the fan assembly lid up off the fan assembly.
- Remove the fan assembly lid.

## Step 10 — AirPort Board



- Remove the three 3.7 mm T4 screws securing the metal cover to the AirPort board bay.

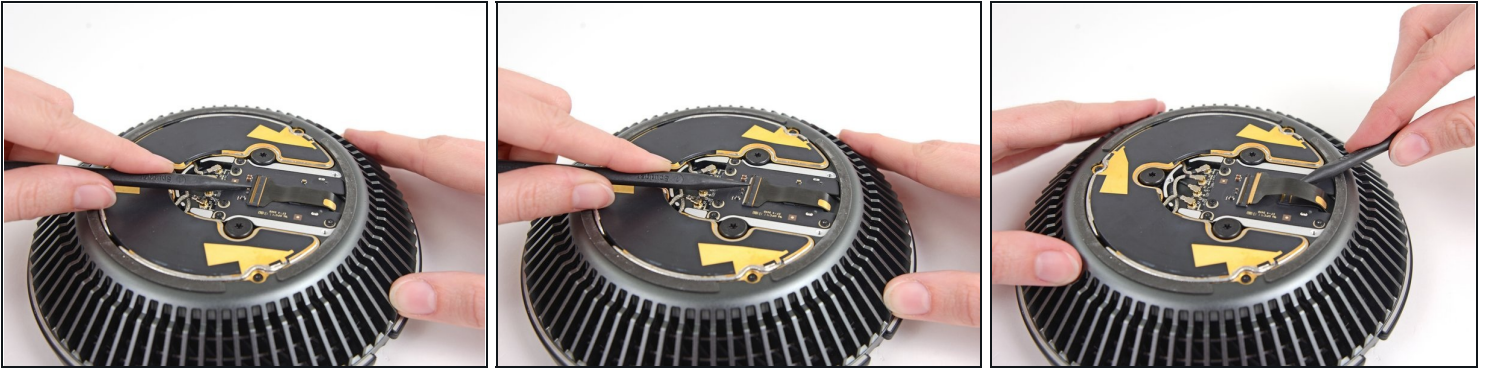
## Step 11



- Lift and remove the metal cover from the AirPort board bay.

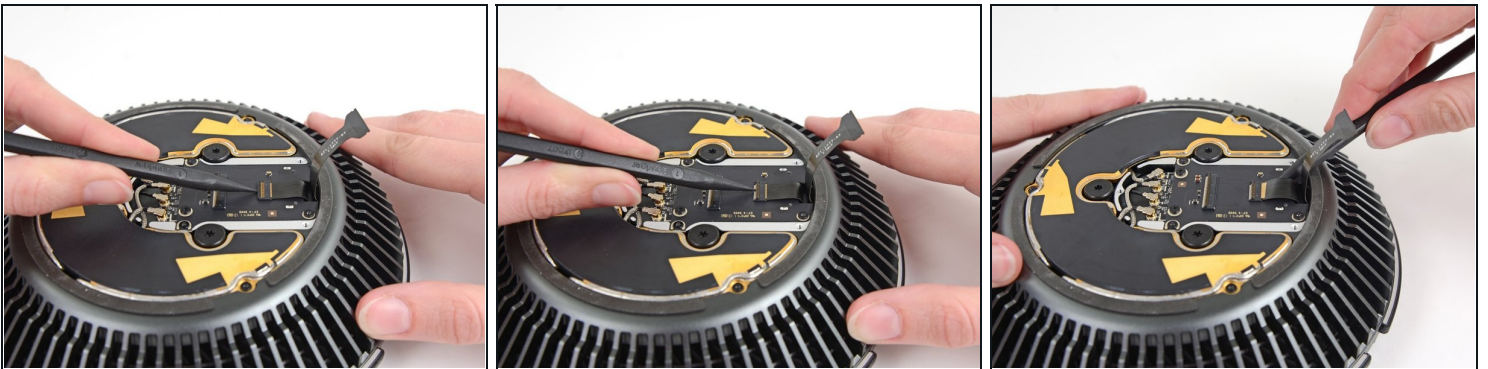


## Step 12



- Use the tip of a spudger to flip the ZIF retaining tab on the fan assembly ribbon cable connector.
- Remove the fan assembly ribbon cable from its ZIF socket.

## Step 13



- Use the tip of a spudger to flip the ZIF retaining tab on the fan ribbon cable.
- Disconnect the fan ribbon cable.

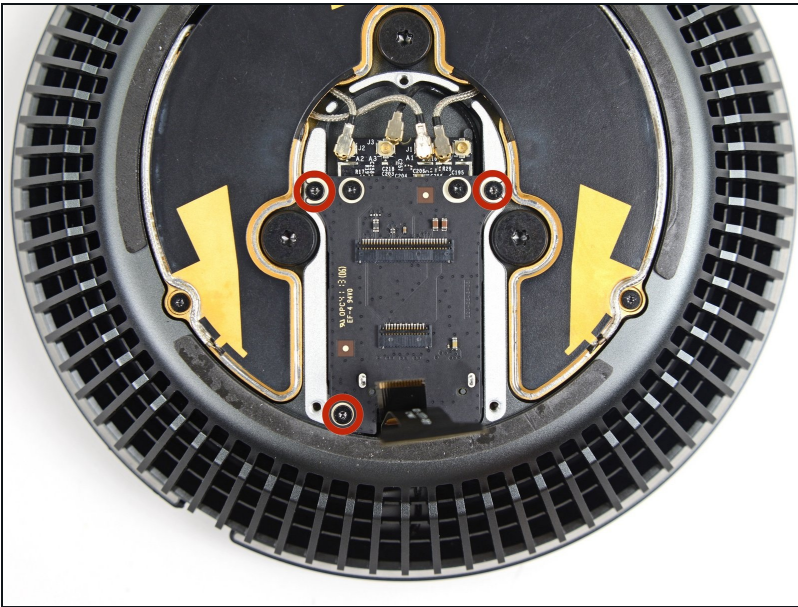


## Step 14 — AirPort Card



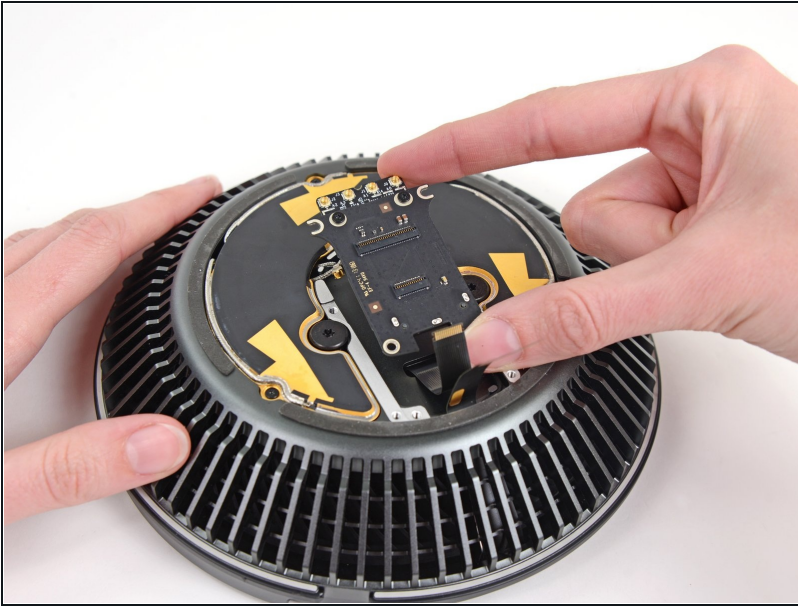
- Use the tip of a spudger to disconnect the four AirPort antenna cables from the AirPort card.

## Step 15



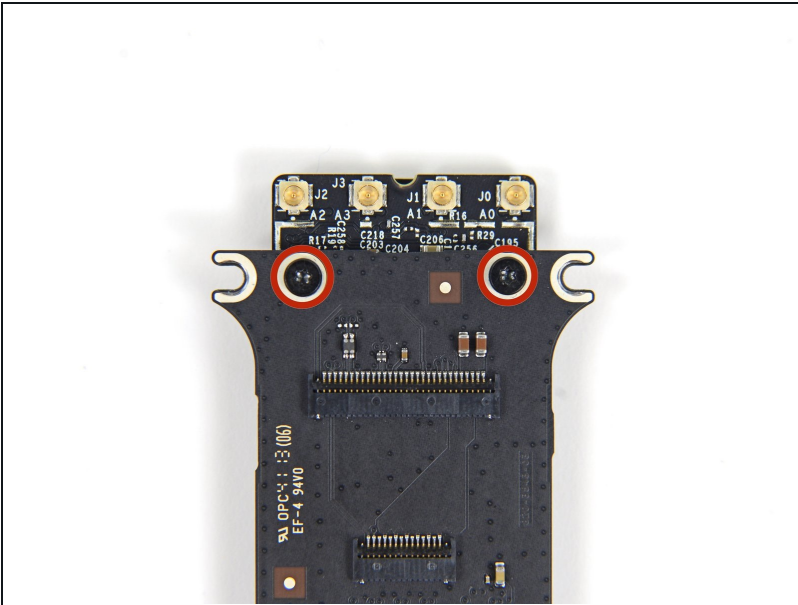
- Remove three 3.7 mm T4 screws securing the AirPort board to the fan assembly.

## Step 16



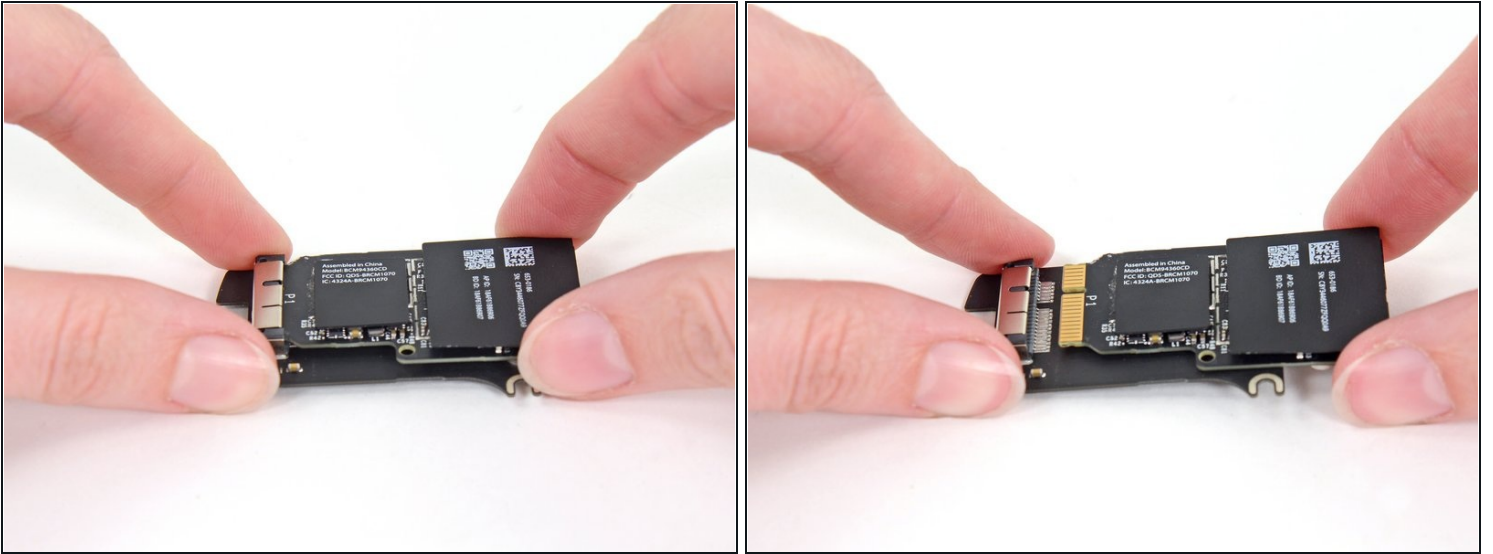
- Remove the AirPort board and card from the fan assembly.

## Step 17



- Remove the two 3.7 mm T4 Torx screws securing the AirPort card to the AirPort board.

## Step 18



- Slide the AirPort card out of its socket in the AirPort board.

---

To reassemble your device, follow these instructions in reverse order.