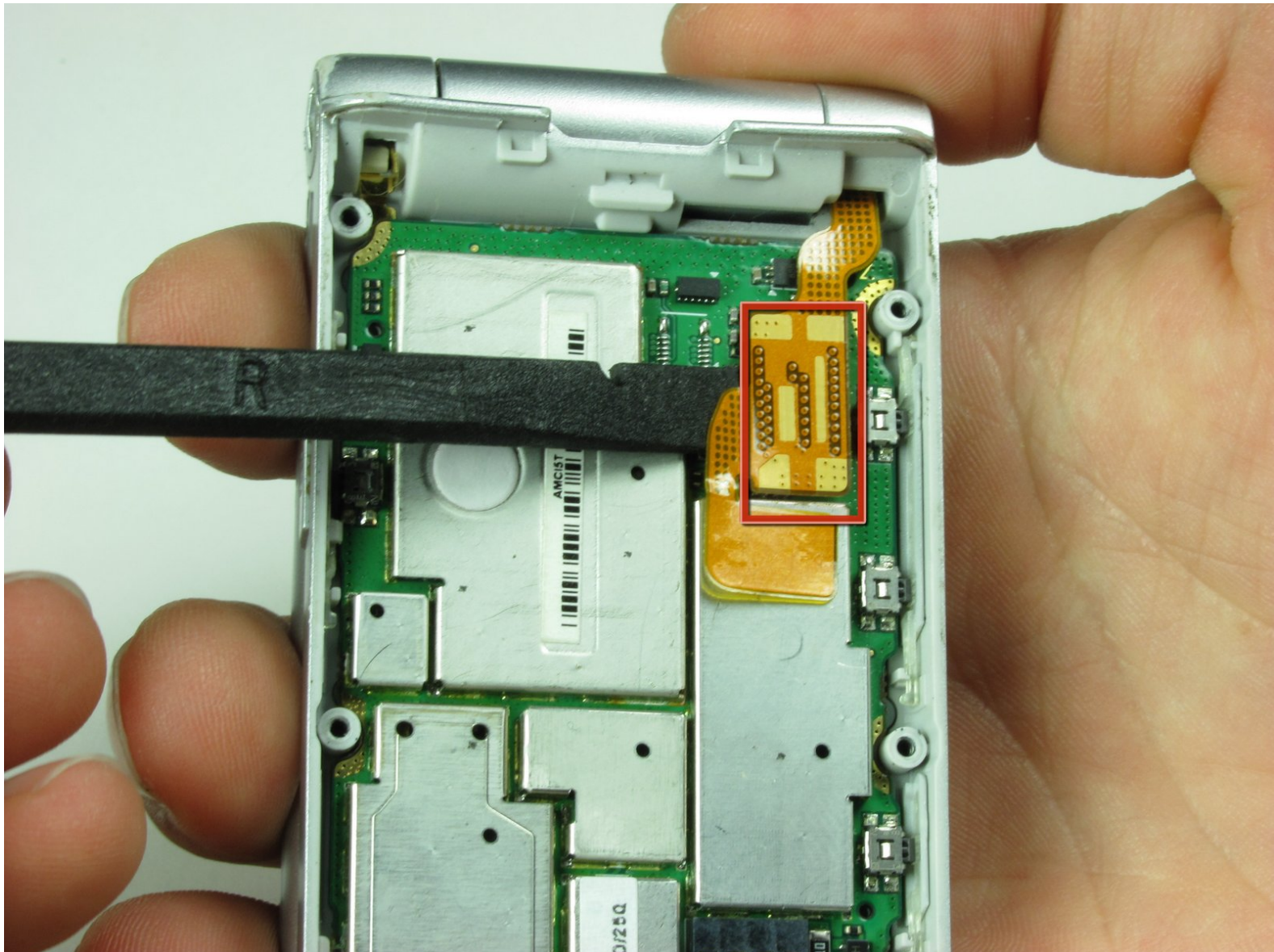




Motorola W385 Logic Board Replacement

Written By: Javier Mendez



INTRODUCTION

Have a faulty logic board? Replace it



TOOLS:

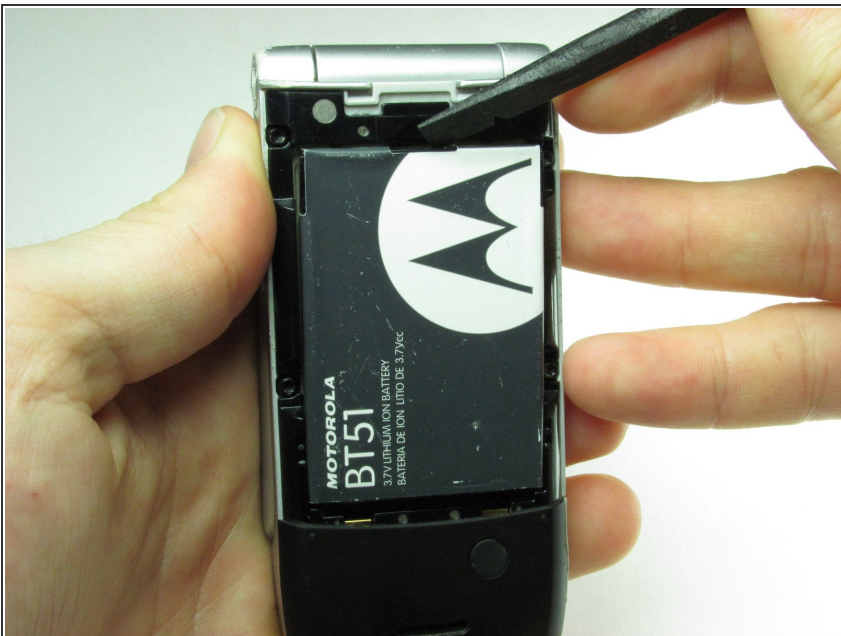
- [Spudger](#) (1)
-

Step 1 — Battery



- Using your finger, press down on the clip holding the back cover on.

Step 2



- Using the spudger or your finger, gently pull the battery out from the top.

Step 3 — Bottom Casing



- Hold the phone as shown in the photo.

Step 4



- Using the flat side of the spudger and a little pressure, insert it under the bottom plastic piece at about center.
- This might require a little persistence due how the beveled plastic rests on the phone body.
- After the spudger is under the plastic piece, move counter clockwise using a gentle twisting motion until the piece is free from the phone body.

Step 5



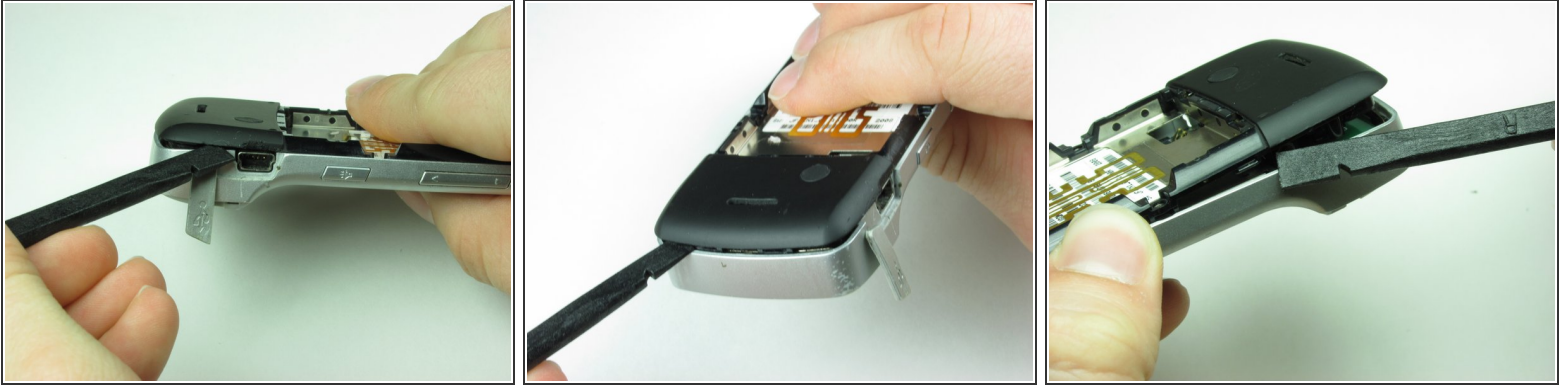
- Remove the two Torx-6 screws under the removed plastic.

Step 6



- Keeping the phone open, turn it over allowing the battery compartment to be visible.
- Remove the four Torx-6 screws from the back plastic.

Step 7

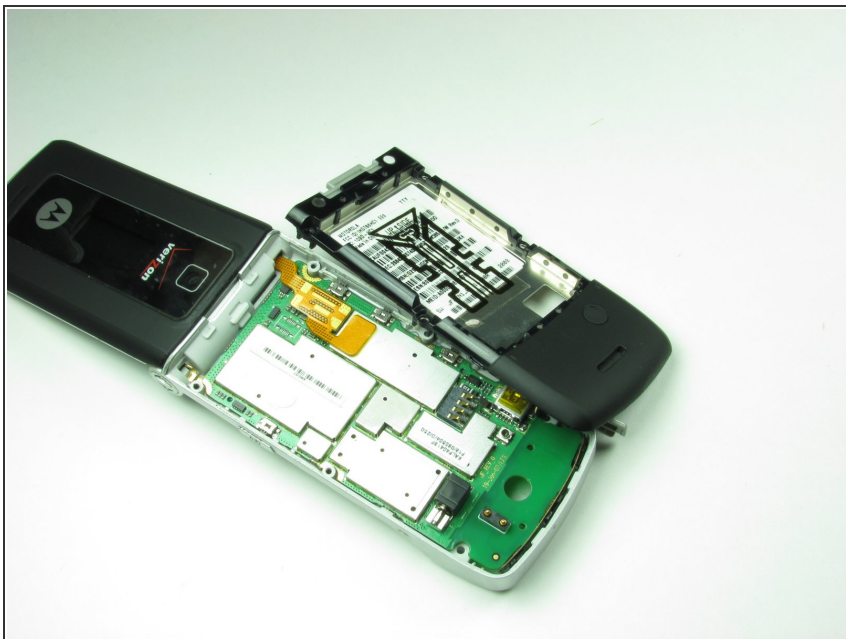


- Hold the phone with the keys facing down and the mini USB charging port visible.
- Open the rubber flap covering the charging port.
- Insert the flat end of the spudger just above the charging port.
- Using the same gentle twisting motion, work around the bottom of the phone and up the opposite side. The back casing should separate from the body of the phone.



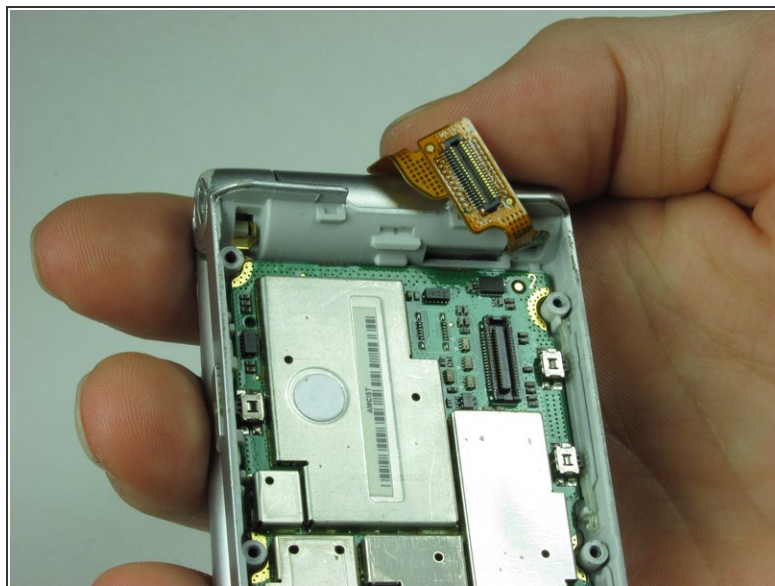
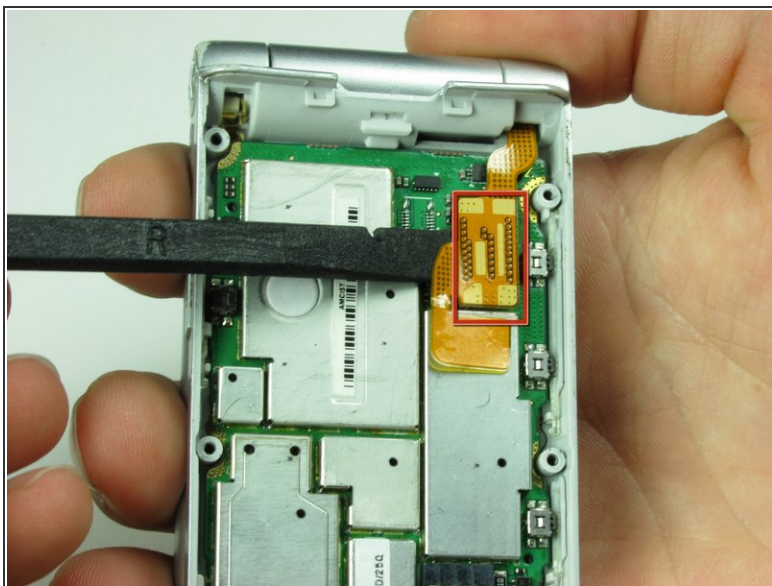
When working on the thinner pieces of the plastic casing, use caution insuring the plastic does not crack.

Step 8



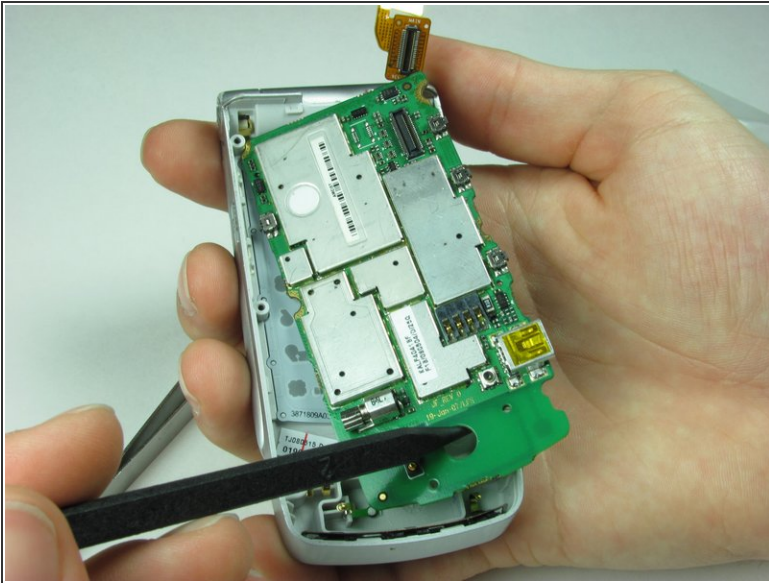
- The casing can be easily removed exposing the bottom logic board.

Step 9 — Main Logic Board




- Use spudger to gently separate the ribbon cable from the logic board.

Step 10



- Place the sharp end of the spudger in the hole at the bottom of the logic board.
- Gently remove the logic board from the phone casing.

 Make sure not to damage any other components of the logic board.

To reassemble your device, follow these instructions in reverse order.